



2023-24

PINSETTER PARTS



Parts for A-2 Machines

BALL LIFT

POWER LIFT TRACK

162-6305

Replaces Part 58-2434



POWER LIFT WHEEL

162-7001

Replaces Part 57-2036



DEEP
PURPLE
URETHANE

BALL RETURN

BALL ACCELERATOR WIPE 23"

162-6127

Replaces Part 12-252377-000

BALL ACCELERATOR WIPE 36"

162-6128

Replaces Part 12-252377-000



DROP SWEEP BALL WIPER KIT

162-6129

Replaces Part 61-860246-000

DROP SWEEP CLOTH ONLY

162-6130

These Pinsetter Wipes are made from a durable cotton weave that will keep the ball transfer areas free from oil and dirt for many years to come. Machine washable. Velcro® included where applicable.

Y-SWITCH

162-6306

Replaces Part 58-5153



DEEP
PURPLE
URETHANE

Parts for A-2 Machines

BALL RETURN

ADJUSTABLE FULL CONTACT Y-SWITCH BUMPER (2 PER PKG)

PPP-FCYSB

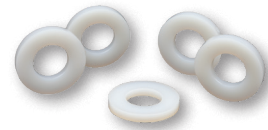
Add or remove washers for accurate ball entrance into accelerator or booster. Place unused washers on other side of stop bar for nut backing and future adjustments.



Y-SWITCH SPACER (5 PER PKG)

PPP-YSS

$\frac{3}{16}$ " nylon spacers provide better pivoting surface than a handful of oversized washers.



DECK BUCKET (7, 10 PIN)

162-6301

Replaces Part 90-2803U

DECK BUCKET (1 PIN)

162-6302

Replaces Part 90-2802U

DECK BUCKET (5 PIN)

162-6303

Replaces Part 90-2837U

DECK BUCKET (2, 3, 4, 6, 8, 9 PIN)

162-6304

Replaces Part 90-2820U

**DEEP
PURPLE**
URETHANE



DECK ROLLER URETHANE

162-7002

Replaces Part 57-2015

Made from high quality blended urethane.

DECK ROLLER

162-6004

Replaces Part 90-200114-000

The Deck Roller is designed to create a consistently smooth pin pivot to minimize the amount of pins that fall down or are placed off-spot. This solid one-piece design is made from high quality UHMW and requires no insert or bearings.



DECK

Parts for A-2 Machines

SAFETY DECK HOOK

162-8008

Replaces Part 12-350803-600

Our Safety Deck Hook is simpler, safer, and performs better. Mounting holes are threaded to eliminate the need for locking nuts, and this assembly is easy to install and adjust. The knife edge has been removed, reducing wear on the hook and deck post pin while decreasing the risk of injury. The inner radius has been increased to allow more surface contact of the deck post pin for a better grip. This Safety Deck Hook is made from billet aluminum.



TURNBUCKLE

162-6147

Replaces Part 12-200069-000

Hex shape makes adjustments much easier.



DECK CABLE SPRING MOUNT REPAIR

PPP-CSMR

Quickly restore worn away deck cable spring mountings. Unscrew allen fastener far enough to slip on repair bracket.



DECK ROLLER SPACERS (2 PER PKG - 7 & 10 PIN SIDE)

PPP-DRS

Occasional unexplained pin jam in the 7 or 10 bucket? Install Spacers to eliminate the possibility of the pin bottom being caught momentarily on the side of the deck roller.



DECK ROLLER SHOULDER BOLT (2 PER PKG)

PPP-DRSB

O-rings provide tension to the shoulder bolt preventing the hole from wearing. Costs less to replace than x washer and pins.



DECK SHIELD BRACKET

PPP-DSB

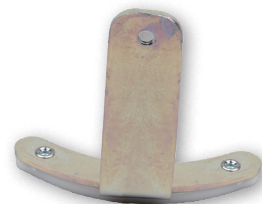
10 ga steel bracket is an economical replacement for OEM upper rear brackets where mounting bolt is broken in casting.



DECK SHIELD SLIDE BRACKET

PPP-DSSB

Bracket with plastic base allows front of shield to glide freely on deck and reduces chance of rear shield brackets breaking. Front shield support is important in keeping shield from sagging and allowing contact with pit light.



Parts for A-2 Machines

PIN WHEEL CLUTCH IDLER PULLEY

162-8300

Having turn pan jams on your machine? Pin wheel brakes wearing through and damaging your belts? Solve this problem by eliminating the pin wheel brake with our Pin Wheel Clutch Idler Pulley.

This solid machined pulley with clutch bearing replaces the OEM Pin Wheel Brake or OEM Idler Pulley. Eliminate excessive pin wheel coasting which can cause an inconvenience and waste valuable time. When converting from the OEM Pin Wheel Brake, you will also need to order 162-8056 (Idler Arm).

162-9607 - Bearing for Pin Wheel Clutch Idler Pulley



JACK SHAFT

162-6079

Replaces Part 12-400810-000

Tired of jack shafts prematurely failing due to inferior designs, low quality steel, and inadequate press fits? Try the new Kegel Jack Shaft constructed out of 1045 high strength cold rolled steel and machined to exact specifications. This universal jack shaft ensures the proper bearing press needed for optimum performance. Black oxide finish.



JACK SHAFT BEARING

162-9609

Replaces Part 10-430001-000

When maintaining or replacing your existing jack shaft assembly, it is important to inspect your bearings, regrease, and/or replace as needed. Our Jack Shaft Bearings are the perfect complement to the Kegel Jack Shaft.



IDLER STUD

162-6145

Replaces Part 12-400027-000

Original factory specification maintained throughout this part.



BALL LIFT ROD STUD

162-6037

Replaces Part 12-400053-000

Precision-machined shaft made out of 1045 high strength steel.



LIFT ROD CAP

162-6308 - Small

Replaces Part 12-4107

162-6309- Large

Replaces Part 12-4108

162-6310 - Lower

Replaces Part 12-4109



**DEEP
PURPLE**
URETHANE

Parts for A-2 Machines

KEGEL KICKER MATERIAL - 25 FOOT ROLL

162-7000

This Kegel Kicker Material comes in 25' rolls with 3M® self-adhesive backing. Easily install this to the ball wheel.

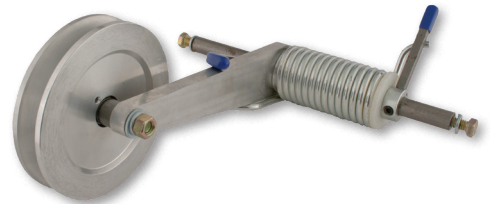


THE DEVIATOR™ BALL WHEEL TENSIONER KIT

162-8400

The patented Deviator™ Ball Wheel Tensioner Kit will greatly reduce ball damage caused by pins being lodged between the ball and the lift rods.

Eliminate premature belt wear by placing the ball wheel belt in a less stressful environment, which also gives you the ability to easily fine-tune the ball wheel belt tension.



SPEED REDUCTION KIT

162-8100

Increase frames per stop on your machine with our Speed Reduction Kit. Having fewer stops on your machine requires less work for pin chasers and mechanics, and also leads to more satisfied customers who are not spending their time waiting for repairs. This kit accomplishes that by slowing the pinsetter run speed and allowing the pin wheel to load more efficiently. This kit comes as a set of three reduction pulleys and the related hardware.



A-2 GUIDE ROLLERS



- High quality UHMW construction.
- Proven reliability of rubber seal bearings.
- Thicker flanges for better tracking.



162-8003



162-8074



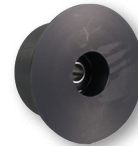
162-8073



162-8002



162-8001



162-8011



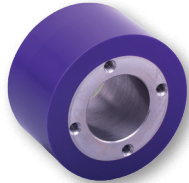
162-8052

Parts for A-2 Machines

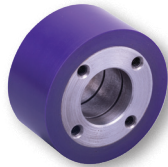
A-2 GUIDE ROLLERS URETHANE



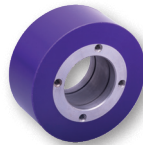
- High quality urethane construction.
- Works with your existing bearings and flanges



162-7004



162-7005



162-7007



162-7003



162-7006

PART #	PART NAME	BEARING	SNAP RING	REPLACES PART #
162-8003	UPPER BALL WHEEL GUIDE ROLLER	162-9608	162-2401	12-400272-000
162-7003	UPPER BALL WHEEL GUIDE ROLLER URETHANE	N/A	N/A	12-4271
162-8074	SOLID UPPER BALL WHEEL GUIDE ROLLER *May order 162-8075 (Mounting Bracket) if converting from original OEM configuration	162-9606	162-2403	12-862823-000
162-7004	SOLID UPPER BALL WHEEL GUIDE ROLLER URETHANE	N/A	N/A	12-8623A
162-8073	SPLIT UPPER BALL WHEEL GUIDE ROLLER W/BACKET	162-9606	162-2403	N/A
162-8075	UBWGR UNIVERSAL MOUNTING BRACKET (Hardware Included)	N/A	N/A	N/A
162-6075	UBWGR UNIVERSAL MOUNTING BRACKET (Bracket Only)	N/A	N/A	N/A
162-8002	LOWER BALL WHEEL GUIDE ROLLER - SOLID	162-9601	162-2404	12-400240-000
162-7005	LOWER BALL WHEEL GUIDE ROLLER - SOLID URETHANE	N/A	N/A	90-4258
162-8001	LOWER BALL WHEEL GUIDE ROLLER - SPLIT	162-9601	162-2404	12-400268-000
162-7006	LOWER BALL WHEEL GUIDE ROLLER - SPLIT URETHANE	N/A	N/A	90-4260
162-8011	UPPER PIN WHEEL GUIDE ROLLER	162-9602	162-2401	12-400266-000
162-7007	UPPER PIN WHEEL GUIDE ROLLER URETHANE	N/A	N/A	12-4264
162-8052	LOWER PIN WHEEL GUIDE ROLLER	162-9601	162-2404	12-400263-000

Parts for A-2 Machines

PREFERENCE SYSTEM KIT

162-8078

The Kegel Preference System Kit is designed to alleviate the headaches associated with the Brunswick® A-2 and Jet Back pinsetters. Minimize the problems caused by the factory design in a reasonably priced, easy to install, low maintenance kit.



This kit eliminates 12 individual parts of the OEM assembly that when not regularly maintained and adjusted will eventually fail.

Our UHMW preference actuator is a low maintenance, low wear portion of the kit. The simple design eliminates the OEM spring rod bumper.

A powerful magnet is used to create a positive locking and unlocking of the preference system kit.

SPRING ROD

162-8023

Replaces Part 12-400193-000



Achieve more refined adjustments with our Spring Rod. The length and thread of the shaft have been extended to allow for more specific precision. This assembly features a separate shaft and head so each part is replaceable. Don't waste money replacing the whole item if only one piece becomes damaged. Our Spring Rod is built out of tough cold rolled steel.

162-6023 - Shaft

162-6123 - Head

SPRING ROD BUSHING

162-6025

Replaces Part 12-400803-000

This Spring Rod Bushing is made from tough cold rolled steel.



SPRING ROD BUMPER URETHANE

162-6307

Replaces Part 90-400123-000

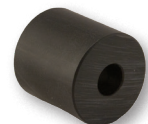


SPRING ROD BUMPER

162-6050

Replaces Part 90-400123-000

Replaces Part 12-400123-000



Our Spring Rod Bumper will not break down easily like other bumpers. It has a one-piece Nylon construction that has high durability.

BALL WHEEL GUARD

162-6133

Replaces Part 90-400840-600

Have your old metal ball wheel guards been welded time and time again? Try our Ball Wheel Guard made out of solid HDPE, a durable material that will require far less maintenance. Virtually indestructible.

BALL WHEEL GUARD - URETHANE

162-6311

Replaces Part 12-4036



DEEP
PURPLE
URETHANE

Parts for A-2 Machines

CLAPPER ADJUSTMENT SCREW STABILIZER

PPP-CASS

1½" diameter base distributes lift rods weight more broadly across spacer. Stabilizes set screw - reduces bending and breakage due to small contact area on lift rods spacer.



HEAVY DUTY LIFT RODS SPRING

PPP-HDLRS

Economically add greater tension to help prevent ball Yo-Yo. Tune-up lift rods with this heavy duty spring and our spring post segmented bumper.



LIFT RODS BENCH MOUNTING FIXTURE

PPP-LRBM

Unobstructed work area for gum rubber replacement.



LIFT RODS REPAIR SHAFT

PPP-LRRS

Install without welding. Keep one on hand for emergencies.



SPRING POST SEGMENTED BUMPER (12 PER PKG)

PPP-SPSB

Place as many or few segments needed for best spring rod adjustment.



MODULAR PIN WHEEL POCKET STABILIZER (7 PER PKG)

PPP-MPWPS

Steel ribs reduce pocket flexing that can trap pins leading to late turn pan delivery. Stabilizer ribs increase plastic pin wheel diameter to nearly that of the steel pin wheel eliminating the need for pin wiper readjustments.



ADJUSTABLE PIN WHEEL TENSION BRACKET

PPP-ABT

Newly installed belts do not always brake properly. Choice of holes allow for just the right tension on pin wheel belts.



Parts for A-2 Machines

BEVEL GEAR TURRET DRIVE CONVERSION

PPP-BGTDC

Economically priced, this method of power transfer is less costly and easier to maintain. Kit has everything needed to convert bevel gear turret drive to idler pulleys.



BEVEL GEAR TURRET DRIVE CONVERSION - BRACKET ONLY

PPP-BGTDC-B

Bracket design allows converting bevel gear turret drive to idler pulleys using commonly found parts (of your choice) to complete the conversion.



POZI-GRIP - POZI GUARD II (2 PER PKG)

PPP-PG2

Lower profile where less surface contact with traction material is needed to carry balls up lift rods.



POZI-GRIP - POZI GUARD (2 PER PKG)

PPP-PG1

Recommended for centers who struggle with lane conditioner carrydown.



PREMIUM POZI-GUARD REPLACEMENTS (4 PER PKG)

PPP-PPGN

Pozi-Guard protects Pozi-Grip by preventing damage to materials leading edge and prolongs life span.



ADJUSTABLE BALL WHEEL IDLER SPRING

PPP-ABWS

Extend belt life by greatly reducing spine strain and V-body separation cracks.



BALL WHEEL PIN DEFLECTOR - NO GUM RUBBER

PPP-BWPD-NG

Greatly reduces or eliminates pins in upper ball track and on floor behind pinsetter. Can be placed in an infinite number of positions to suit individual preferences. Mount in existing hole (enlarge hole size to 7/16") in rear pin guard below and to the right of lift rods mounting shaft.



BALL WHEEL PIN DEFLECTOR - WITH GUM RUBBER

PPP-BWPD-WG



Parts for A-2 Machines

CORK TRACTION MATERIAL (25 FT ROLL)

PPP-CTM

Another adhesive backed option in our specialized line of ball wheel traction materials.



HEAVY DUTY LOWER BALL WHEEL ROLL FLANGE

PPP-HDLRF

Straight-edged flanges. Reduced ball wheel wobble. Extended wear before replacement.



NO BEVEL BALL WHEEL FLANGE (2 PER PKG)

PPP-NBBWF

Straight-edged flanges. Reduced ball wheel wobble. Extended wear before replacement. Replaces the HD flange.



SERRATED FLANGE SCREW (10 PER PKG)

PPP-SFS

Positive securing of ball wheel roller flanges not using countersunk holes.



NO BEVEL UPPER BALL WHEEL ROLLER FLANGE (2 PER PKG)

PPP-NBGRF

Straight-edged flanges. Reduced ball wheel wobble. Extended wear before replacement.



SELF-ADHESIVE ROLL STOCK (10 FT ROLL)

PPP-RS

High-quality roll stock ideal for ball wheel conditions requiring the use of traction materials. Long term economy - less material needed to achieve results.



Parts for A-2 Machines

PIN WHEEL BRAKE LINING

PPP-PWBL

Install without removing worn brake. Slide new steel lining between belt and worn brake and secure.

PIN WHEEL WIPER CUSHIONED SPRING SUPPORT

PPP-PWS

Choose position for more or less support and height for best results to reduce turn pan jams.

PIN WHEEL SOUND DAMPENER

PPP-PWSD

Held in place with a spring, easy to install ¼" steel cable reduces pin wheel noise.

CROSS CONVEYOR POZI-PLATE

PPP-CCPP

Lexan plate fastens to cross conveyor with tension springs. Applies downward pressure eliminating pin slippage.

POZI-PLATE TENSION SPRINGS

PPP-PPTS

Fine tune Cross Conveyor Pozi-Plate pressure.

PIN GATE & LATCH NUT PLATE KIT

PPP-PGL-NP

Repair elongated x-washer pin mounting holes. Ensure parts rotate on bolt rather than pins rotating in mounting holes. Easy access service with Allen wrench.

SNUBBER TAMER

PPP-ST

Eliminates chance of pin caught in halo ring making it unnecessary to "fine-tune" tops of turret wires and forces pin bottom more squarely onto index lever for improved triggering. Reduces pin bounce as pins drop into turret wires.

TURNBAR II (T-1 UPGRADE)

PPP-T2

Turn bars ensure base-first turn pan pin orientation reducing or eliminating turn pan jams and headfirst pin delivery.

PIN GATE STRAP

162-6007

Replaces Part 12-860808-000

Our Pin Gate Strap, machined from cold rolled steel, is made thicker to increase strength and durability. It also features a deeper recessed notch which allows for better seating to help reduce pin gate failure.



Parts for A-2 Machines



HOOK SELECTOR PIN LARGE

162-6217

Replaces Part 12-1041D



HOOK SELECTOR PIN SMALL

162-6218

Replaces Part 12-1041E



HOOK SELECTOR KIT

162-8221

Replaces Part 8-380



DEEP
PURPLE
URETHANE

BELLCRANK

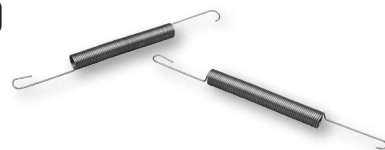
162-6312

Replaces Part 57-1236

AUTO OUT-OF-RANGE ASSIST SPRING (2 PER PKG)

PPP-AORAS

Spring keeps consistent detector bell crank tension against the automatic out-of-range adjustment bolt throughout the entire machine cycle allowing precise hook pivoting over (and away from) the post on the selector arm assembly.



DASHPOT CHAIN LINK REPLACEMENT

PPP-DCLR

Keep these on hand and eliminate the headache of replacing the chain link during repairs in this area. Remove model A plunger and drop in this assembly and adjust like an A2.



GBX OIL DIPSTICK

PPP-DIP

Sight glass is often a cloudy unreliable indicator. Add oil when below bottom line. Push Dip Stick into oil fill hole at an angular position of about 11:25, until rod hits bottom of gearbox.



AUTOMATIC OUT-OF-RANGE HOOK REPLACEMENT

PPP-HR

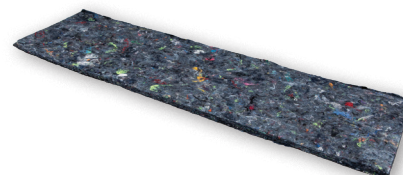
$\frac{7}{8}$ " gap allows for use of the commonly used 8" bench grinder at a width of $\frac{3}{4}$ " to easily adjust ID of hook-end for proper spacer clearance needed in some pinsetters. Lower image OEM.



OIL PAN LINER (4 PER PKG)

PPP-OPL

$\frac{1}{4}$ " thick pads will keep oil pans free of heavy grime build-up for many years. Use scissors to cut slit in one end for bracket clearance for wall to wall absorption.

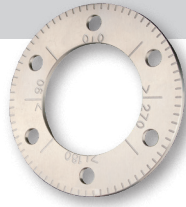


Parts for A-2 Machines

DEGREE WHEEL

162-6034

Replaces Part 12-100044-000



Our Degree Wheel is designed to allow you to easily locate, mark, and adjust the rake cam to fit your pinsetter. It is not only useful for making quick visual adjustments, but also looks great on your machine with its highly polished finish. This Degree Wheel is made out of high quality billet aluminum.



WORM SHAFT OIL SEAL KIT

162-8237

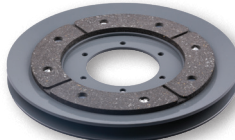
Replaces Part 12-860603-000



CLUTCH PULLEY & BEARING ASSEMBLY

162-8236

Replaces Part 12-860717-000



CLUTCH PULLEY

162-8214

Replaces Part 12-860630-000



CLUTCH BEARING ASSEMBLY

162-8205

Replaces Part 12-860716-000



CLUTCH PULLEY LINING KIT

162-8218

Replaces Part 12-862864-003



CLUTCH DRIVE DISC LINING KIT

162-8219

Replaces Part 12-862864-005



CLUTCH BEARING BUSHING

162-6210

Replaces Part 12-8629B



TRIGGERING LINK

162-6234

Replaces Part 12-102363-000



CAM FOLLOWER SHAFT ONLY

162-6220

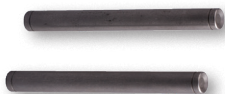
Replaces Part 12-100104-000



CAM FOLLOWER SHAFT KIT

162-8208

Replaces Part 12-1104



CLUTCH LEVER PIN

162-8226 (Package of 2)

Replaces Part 12-100165-002



CLUTCH YOKE PIN

162-8227

Replaces Part 12-100168-003

Parts for A-2 Machines



WORM SHAFT O-RING

162-8238 (Package of 10)
Replaces Part 11-625501-000



1 TO 1 RUBBER O-RING

162-8239 (Package of 2)
Replaces Part 11-625530-000



1 TO 1 MOUNT PLATE

162-6161
Replaces Part 12-100207-000



O-RING FOR CYCLE SOLENOID PIN

162-8228 (Package of 25)
Replaces Part 11-625538-000



OUT OF RANGE LINK

162-8209
Replaces Part 12-100337-000



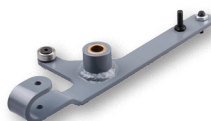
COVER & PIN ASSEMBLY

162-8222
Replaces Part 12-860628-002



CLUTCH RESET LEVER

162-8215
Replaces Part 12-102176-000



HOOK SELECTOR

162-8206
Replaces Part 12-100410-000



CLUTCH BEARING

162-9202
Replaces Part 12-8629C



DETECTOR LINK

162-6221
Replaces Part 12-100040-004



BEARING RETAINER SPACER

162-6212
Replaces Part 12-100185-003



WORM SHAFT OIL SEAL

162-2124
Replaces Part 11-625000-000



ACTUATING LINK

162-6222
Replaces Part 12-250040-000



BEARING STUD KIT

162-8207
Replaces Part 8-334

Parts for A-2 Machines

PIT MOUNTS

162-2034

Replaces Part 90-675000-000



Stay out of the pit! Are you tired of going back into the same pit conveyor assemblies and constantly replacing the conventional rubber pit mounts due to melting or structural failure? Our Neoprene Pit Mounts go through a stringent curing process, and incorporate a Grade 8 stud, making them more durable and ensuring they will not prematurely separate. A little more expensive, but well worth the extra cost!



CARPET COVER - SLIPPERY

162-6188

Replaces Part 12-860725-000



If your carpet covers are slowing down your pins, try this Carpet Cover. It uses a flat woven polyester that has a slick surface and gets the pins to quickly slide off the shaker board. It is more durable, lighter, and is easier to clean than the original version.

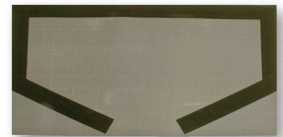


PVC PIT CARPET

162-6117

Replaces Part 12-300103-000

Prevent wear and tear with this PVC Pit Carpet made to withstand the toughest conditions. This Pit Carpet mounts easily over your worn carpet with ultra gripping Velcro® and is just as easy to remove for quick cleaning. This might be the last carpet you will ever need.



ZIP CARPET

162-6132

Replaces Part 12-300103-000

Looking for a great alternative to the OEM pit carpets for a reasonable price? This Zip Carpet can be used to replace your old worn pit carpets or simply Velcro® it right on top of an existing one.

PIT TIERS KIT - 2 FRONT 2 REAR

162-8103

The Pit Tiers Kit is made of cold rolled steel. We have returned to the classic metal design. This kit is sold in sets of 4 (2 Front and 2 Rear). Pit mounts not included.



SHAKER MOUNT FRONT

162-8313

Replaces Part 57-3176

Hardware included.



SHAKER MOUNT REAR

162-8314

Replaces Part 57-3177

Hardware included.



**DEEP
PURPLE**
URETHANE

Parts for A-2 Machines

JOGGER ARM

162-8024

Replaces Part 12-300194-091

Frustrated by alignment issues? Our Jogger Arm is the answer to this problem. The UHMW insert eliminates the need for the needle bearing and spacer. The needle bearings tend to wear over time due to the fact that they don't make a full revolution. The hole in our design is always centered, which cannot be done on a cast arm. This, combined with our precision machining, helps you achieve perfect alignment. This assembly is built from tough billet aluminum and also includes a rubber seal bearing.

162-9605 - Bearing for Jogger Arm

162-2404 - Snap Ring



JOGGER ARM BUSHING KIT

162-6051

Needle bearings tend to wear prematurely because they don't make a full revolution. Our Jogger Arm Bushing Kit replaces the needle bearing and spacer. It is made from UHMW and is sold as a set of two.



BEARING & HOUSING ASSEMBLY

162-6159

Replaces Part 12-300160-000

Rubber seals for easy maintenance.

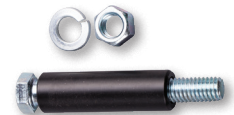


NYLON PIVOT KIT

162-8216

Replaces Part 12-3150

Prevents "frozen" pit belt idlers.



CLAMP & PIN

R.H. 162-8202

Replaces Part 12-300168-000

Quiet your pit assemblies with direct replacements for both right and left hand clamps.

CLAMP & PIN

L.H. 162-8203

Replaces Part 12-300169-000



Parts for A-2 Machines

A-2 RUBBER PIT CURTAIN

162-6169

Replaces Part 12-862167-000

This triple ply curtain is designed for strength and flexibility. Metal rivets securely hold the slightly over-sized loops that accommodate the upper and lower metal rods. Choose this pit curtain for an easy installation and years of trouble-free operation. Our standard matte finish helps scoring system cameras distinguish pins from reflected lighting. Made in the U.S.A.



FOLLOWER LINK

162-6016

Replaces Part 12-252346-000

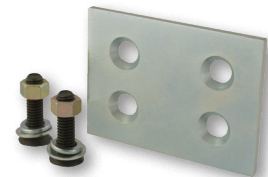
Looking for a part that will fit your machine perfectly? Our Follower Link creates the expert fit every time due to its precision machining. Avoid broken links caused by brittle castings with the durable billet aluminum construction.



PIT CUSHION REPAIR KIT

162-6045

Use our Pit Cushion Repair Kit to replace worn out mounting holes. This kit allows you to mount directly on the kickback.



ROD END CAP 3/4

162-8309

Replaces Parts 57-2580

ROD END CAP 5/8

162-8310

Replaces Parts 57-2581

DEEP
PURPLE
URETHANE



2 PER PACKAGE

SUPER DUTY RAKE BOARD

162-8164

For a rake that will not break try our new high-density polyethylene rake boards. These rake boards are flexible, yet durable enough to take the most extreme impacts that unfortunately occur. At 5/8 of an inch thick, this may be the last rake board you ever buy. Hardware included and sticker friendly.



BIG CUSHION KIT

162-8105

Replaces Part 12-862580-000



STABILIZER ROD END R.H.

162-6167

Replaces Part 12-350122-003



STABILIZER ROD END L.H.

162-6168

Replaces Part 12-350122-004

Parts for A-2 Machines

RAKE RETURN PIVOT REPAIR

PPP-RRPR

Easy to install pivot repair allows adequate room for spring tube operation without binding.



RAKEBOARD STRESS RELIEF KIT (2 PER PKG)

PPP-RSRK

Steel reinforcements prevent fiberglass hole blowout. Put badly damaged boards back into service.



SLOTTED PIVOT GLIDE (2 PER PKG)

PPP-SPG

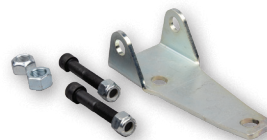
Excellent triggering properties. Eliminates the need to block the C bracket to prevent trip rod lever from inverting. Do both pivot slots or just the trip rod side. Replaces urethane pivot roller.



CUSHION MOUNT BOLT STABILIZER BRACKET (7-SIDE)

PPP-CMBSB-LH

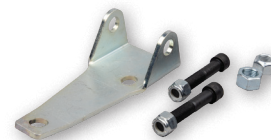
This steel bracket will keep the 1/2" cam bolt from wobbling even if bolt loosens allowing time for correction during normal machine maintenance.



CUSHION MOUNT BOLT STABILIZER BRACKET (10-SIDE)

PPP-CMBSB-RH

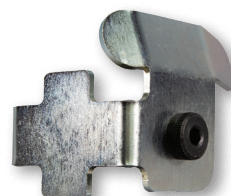
This steel bracket will keep the 1/2" cam bolt from wobbling even if bolt loosens allowing time for correction during normal machine maintenance.



CUSHION SHOCK MOUNT PIN DEFLECTOR

PPP-CSPD

Prevents head of pin being caught between ball wheel and shock mount.



Parts for A-2 Machines

CUSHION WELD PLATES (2 PER PKG - 7 & 10 PIN SIDE)

PPP-CWP

Convenient central ½" holes allow welding access to inner area for added strength. Longer mounting hardware included.



HEAVY DUTY CURTAIN ROD HOLDER (2 PER PKG - 7 & 10 PIN SIDE)

PPP-HDCRH

Secured wrap around design ensures against loosening, bending, and breaking.



CURTAIN ROD HOLDER INSERT

PPP-CRHI

Urethane insert fits our Heavy Duty Curtain Rod Holder.



PIT CUSHION CAM & ROLLER KIT UPGRADE

PPP-PC1K-UP

Impact resistant maintenance-free roller hub. No lubrication needed. Energy Absorbing Roller and Delrin® Cam.



REPLACEMENT INNER ROLLER SLEEVE

PPP-RIRS

Installs directly over roller mounting bolt.



NO MAINTENANCE REPLACEMENT ROLLER ASSEMBLY

PPP-RRR-NM

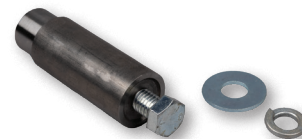
With Maintenance-Free Hub



PIT CONVEYOR FRAME THREADED HOLE REPAIR

PPP-PCTHR

Threaded Hole Repair is machined 4130 hard steel and will further harden during welding for long wear and thread life.



Parts for A-2 Machines

TURRET POCKET

162-8111 (fits 1-7-10)

162-8110 (fits 2-3-4-6-8-9)

Are you tired of unwanted and excessive pin damage due to the design of the turret basket assembly? Do you constantly replace broken or damaged turret wires? Try Kegel's Turret Pocket. Made from high density polyethylene that is mounted on an adjustable bracket. Pocket fits all 9 positions and can be purchased with 2 different mounting brackets and hardware.

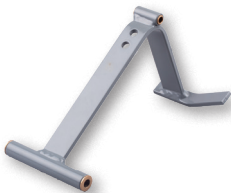


TURRET RING

162-6162 - Standard sized holes.

162-6165 - Oversized holes.

Replaces Part 12-150040-000



TURRET INTERLOCK PROBE

162-8104

Replaces Part 12-150086-000



SLIDE PLATE

162-8201

Replaces Part 12-150258-000



SHORT LINK

162-8213

Replaces Part 12-150289-000



TURRET CLUTCH LINING

162-8217

Replaces Part 12-862864-002



TURRET CLUTCH LINING UHMW KIT

162-8235

Replaces Part 12-8605

Parts for A-2 Machines

FAIL TO INDEX LATCH

162-6100

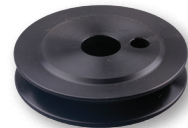
The Fail To Index Latch removes excessive play in the indexing assembly. The installation for this is quick and it is very handy in a pinch.



TURRET CLUTCH DRIVE PULLEY (OFFSET)

162-6213

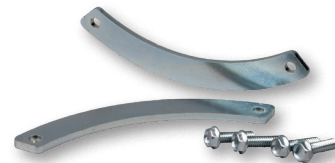
Replaces Part 12-150219-000



5 CHUTE MOUNT REINFORCEMENT (2 PER PKG)

PPP-5CMR

Repair broken 5-chute clamp plate corners with these heavy duty 10 gauge Reinforcement Straps. Install Reinforcement Strap to prevent clamp plate corner breakage from occurring.



ADJUSTABLE TORSION LATCH BUMPER (2 PER PKG)

PPP-ATLB

Self-aligning urethane bumper has 4 sides with $\frac{1}{16}$ " increments from mounting post for fine-tuning torsion latch depth under time delay gear.



BELL CRANK STUD HOLE REPAIR (2 PER PKG)

PPP-BCSHR

Quickly restore precise bell crank stud position in elongated turret frame mounting hole. Large diameter washer fits perfectly into milled recess of turret frame to center stud in its original position.



Parts for A-2 Machines

HEAVY DUTY BLOCKING FINGER SPRING

PPP-HDBFS

75% stronger than OEM - eliminates the need for multiple springs on restricted drop blocking finger.



HEAVY DUTY PROBE SPRING (2 PER PKG)

PPP-HDPS

Ensures spoons lock after pins release. Shortening springs can give unexpected results and tying off coils may lead to failure.



POZI-DRIVE CLUTCH LINING (3 LINING STRIPS & RIVETS PER PKG)

PPP-PDCL

These linings have over 50% more surface to surface contact than OEM - provides more driving power for extended life and better performance.



TURRET WIRE FASTENER SYSTEM (10 PER PKG)

PPP-TWFS

Top mounted riser and lock washer allows full bolt head contact with socket or wrench.



Parts for A-2 Machines

3 AMP CIRCUIT BREAKER-AMERICAN

PPP-3ACB-A

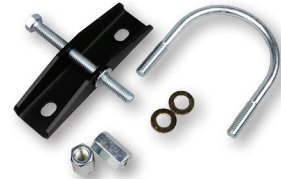
Convert costly Fustats into resettable 3 amp circuit breakers compatible with American A and A2.



FRAMEWORX SEATING PIN REMOVAL TOOL 2

PPP-FXPRT-2

Economical tool, for spring and bearing replacement, in Frameworx seating. Unseat hard to access pins.



FRAMEWORX SEATING LIGHTWEIGHT PIVOT SPRING (LH)

PPP-FXPS-LH

FRAMEWORX SEATING LIGHTWEIGHT PIVOT SPRING (RH)

PPP-FXPS-RH

60% spring-power reduction eliminates customer complaints. Seating parts and spring-life greatly increased by greatly reducing seat retraction impact.



FRAMEWORX SEATING HEAVY DUTY SWIVEL BEARING

PPP-FXSB

Made of Nylon 6/6, these bearings have twice the shoulder height as OEM (at right) to insure bearing stays seated in tube for longer bearing life.



BALL BOOSTER TO LIGHT BAR STEP

PPP-LBS

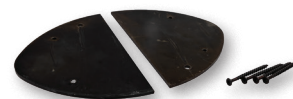
Provides a sturdy platform to safely step between ball booster and pit light bar. Mounts to existing holes in pit light mounting channels.



STARTER BLOCK RAMP (2 PER PKG)

PPP-SBR

Smoother lane machine transfers and less jarring of expensive machinery and adjustments.



Parts for A-2 Machines

NO SLIDE PIN SPOTS (9 PER PKG)

PPP-NSPS

No-Slide Pin Spot will not interfere with normal ball or pin action.



REPLACEMENT REFLECTORS (2 PER PKG)

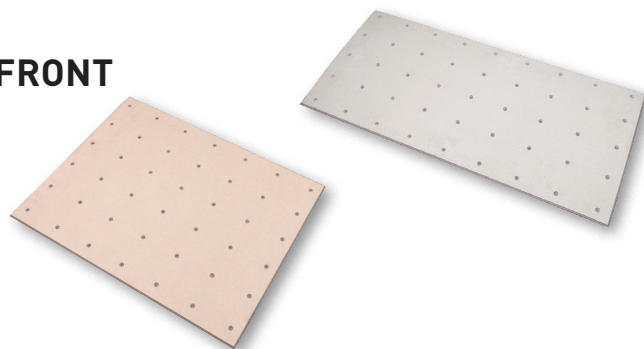
PPP-RR1

For all triggering systems using center mounting reflectors. Center mounting reflector measures 3 1/4".



PREMIUM FIBER KICKBACK PLATE - FRONT

PPP-FKB



PREMIUM FIBER KICKBACK - REAR

PPP-FKB-R

PHENOLIC KICKBACK PLATE - FRONT

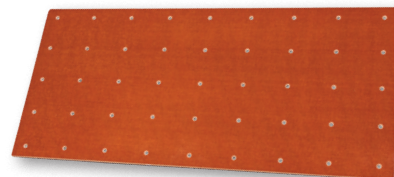
PPP-PKB

Dimensions: 15" X 33"

PHENOLIC KICKBACK PLATE - FRONT (40")

PPP-PKB-40

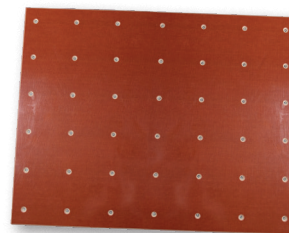
Dimensions: 15" X 40"



PHENOLIC KICKBACK PLATE - REAR

PPP-PKB-R

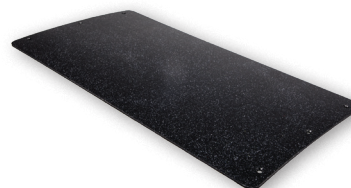
Dimensions: 19" X 24"



REAR KICKBACK REPAIR PLATE

PPP-RKBC

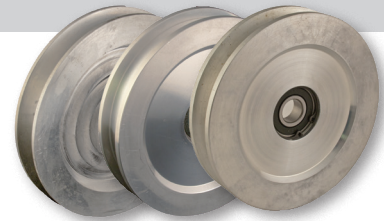
Cover gouged wood and holes to prevent further damage. Cover undamaged kickbacks to prevent damage. Mount behind rear plate and below upper shaker frame to span pin pass-by area.



Parts for A-2 Machines

PULLEYS

Greatly reduce premature belt wear and poor tracking with our Pulleys. Increase the lifespan of your machine and save money on maintenance. Our one-piece design allows for precise belt tracking and fit. All assemblies include rubber seal bearings for accessibility and maintenance.



PULLEY IDLER FOR PIT CONVEYOR

162-6020

Replaces Part 12-300071-000

PULLEY IDLER FOR FLAT BELT

162-8015

Replaces Part 12-400297-000

162-9603 - Bearing

162-2402 - Snap Ring

PULLEY IDLER FOR V-BELT

162-8021

162-9603 - Bearing

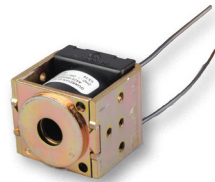
162-2402 - Snap Ring



SILICON RECTIFIER KIT

162-8234

Replaces Part 12-7581



HEAVY DUTY CYCLE SOLENOID 208/230V

162-1201

Replaces Part 10-688006-000

Made by Guardian® Electric Manufacturing Company.

BEARINGS & SNAP RINGS

BEARING	SNAP RING	FITS ASSEMBLY NUMBER
162-9601	162-2404	162-8001, 162-8002, 162-8052
162-9602	162-2401	162-8011
162-9603	162-2402	162-8015, 162-8021
162-9605	162-2404	162-8024
162-9606	162-2403	162-8073, 162-8074
162-9607	N/A	162-8300
162-9608	162-2401	162-8003

Parts for GS[®] Machines

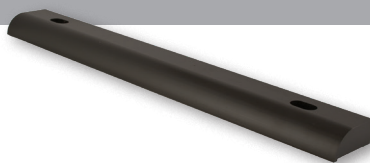
MISCELLANEOUS

IMPACT STRIP

162-6125

Replaces Part 47-021010-003

Minimize the possibility of ball damage and pin damage due to worn out impact strips. For each of our products, we have done thorough testing and research. Using our knowledge and expertise, we are able to determine the best material for each specific application. In this location, HDPE is the most impact resistant material we could choose. Unlike the original plastic injection molded parts, our Impact Strip is machined from a solid piece of HDPE.



PIVOT PIN (PKG OF 10)

163-6004

Replaces Part 47-860005-000

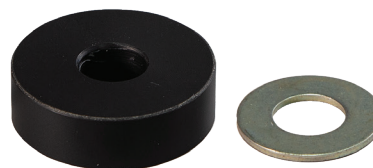
Rugged Nylon 6 construction.



SHOVEL REBUILD KIT

163-8012

Rebuild your shovels at a fraction of the cost of a new assembly with this Shovel Rebuild Kit.



SMALL TRACK WHEEL REPLACEMENT

163-8013

REPLACES PART 47-011046-004

Worn Track Wheels can cause poor loading of the pins into the shovels. Try our Small Track Wheel Replacement to increase pin loading efficiency at an affordable price.

MICROSWITCHES

SINGLE: 163-8001

Replaces Single Cherry[®]
(Part 47-053635-004)

DOUBLE: 163-8002

Replaces Double Cherry[®]
(Part 47-054700-004)

SINGLE: 163-8003

Replaces Single GSX[®]
(Part 47-055323-004)



SETTING TABLE HARNESS (GSX ONLY)

163-8000

Replaces Part 47-245164-001

When you look at the current Setting Table Cable, you see a variety of colored wires. Have you ever wondered why its counterpart, the Setting Table Harness, only has four standard colors? Eliminate the confusion and don't waste time trying to match up wires with our new Setting Table Harness. This harness is hand-pinned by our wiring experts at Kegel. Simplify the troubleshooting process using our color-coded wiring system designed to match your existing Setting Table Cable assembly.



ELECTRICAL

Parts for GS[®] Machines

SWEEP WAGON WHEEL

162-6099

Replaces Part 99-040249-004

Our Sweep Wagon Wheel is designed to prevent delamination (or separation). By installing parts that are more durable than the current market versions, you will end up saving money not buying as many replacements. The high grade UHMW construction of our Sweep Wagon Wheel will outlast the competitors' part and with less maintenance or repairs.



RED BELT 12.5 MM X 20 METERS

163-9020R

Replaces Part 47-275804-009



RED BELT 15 MM X 7 METERS

163-9007R

Replaces Part 47-024838-005

Achieve superior pin transport with this polyurethane belt. This smooth material was selected specifically for its ability to grip against the pin surface. OEM replacement at an affordable price, and you can use your current welding tools.



ORANGE BELT 12.7 MM X 20 METERS

163-9004

Replaces Part 47-275804-009

This new belt provides an economical option to our Red Belt. Easy to weld and slightly textured for positive pin transfer. An OEM replacement at a more affordable price.

GUTTER ADAPTER

162-6124

Replaces Part 47-041721-002

Our Gutter Adapter helps eliminate dead wood. Don't waste time collecting pins and minimize customer complaints by installing this part. Our Gutter Adapter is machined from a solid piece of HDPE.



Parts for GS[®] Machines

HEAVY DUTY OVERFLOW SOCK

163-6006

Replaces Part 47-022531-000

This pin sock has a 6 inch wide PVC strip that bends at nearly 90 degrees and delivers the pins so they land gently and parallel to the transport band. Say good-bye to transport bands wearing out every two or three years due to repetitive pin impact. The extra wide mouth also helps prevent pin jams.



PIVOT BEARING

162-6126

Replaces Part 47-075352-004

Pivot Bearings are a vital part of your pinsetter and when they fail, it can result in a lot of damage to your machine. Our Pivot Bearing is made from high strength 6061 Aluminum, the perfect material to withstand the immense weight and pressure placed on this part of your pinsetter.



T-BAND WHITE

163-6005

Replaces Part 11-635201-000

Our white T-Band is a heavyweight at 3.75 mm thick, but it retains its flexibility making it easy to install. It has great tracking and stays in place once adjusted. This T-Band consists of a fabric top, rubber middle, and cloth bottom. With a 1-1/8" lap seam, you will experience no delamination. Works out of the box.



T-BAND BLACK

163-6026

Replaces Part 11-635201-100

Looking for great quality at an affordable price? Try our black T-Band as an OEM replacement.



Parts for GS[®] Machines

PIN WIPE

163-6022

Replaces Part 47-860003-000

Replaces Part 47-092527-000

UNDERGROUND BALL WIPE

163-6023

TRAP DOOR BALL WIPE

163-6024

ACCELERATOR BALL WIPE

163-6025

These Kegel Pinsetter Wipes (compatible with GS[®] machines) are made from a durable cotton weave that will keep the ball and pin transfer areas free from oil and dirt for many years to come. Machine washable. Velcro[®] included where applicable.



SHARK TRANSITION CAM

163-6008



Every pinsetter technician knows that a critical location in any machine is where the pin must change the direction it is traveling. In the GS[®] series pinsetters, the pins exit the shark assembly at a very sharp angle which can cause the pin to slip and then have to reorient as it travels down the distributor belts.

Our Shark Transition Cam provides a gentler angle for the pin to transfer between the shark and distributor belts. The head of the pin strikes the Shark Transition Cam instead of the side rail of the distributor, allowing it to absorb most of the rebound. Sold in a set of two cams with hardware. Use one set per pinsetter.



CROSSOVER WEDGE

163-8011



Another problem area within the GS series machines is the crossover area where the pin must reverse the direction of travel. Due to the gap between the pin and the side plates in the crossover area, the pin is likely to have an inconsistent transfer when changing directions. We have solved this problem with this Crossover Wedge. Much like our Shark Transition Cam, the Crossover Wedge facilitates a smooth transfer around the bend. Sold in a set of two wedges with hardware. Use one set per pinsetter.



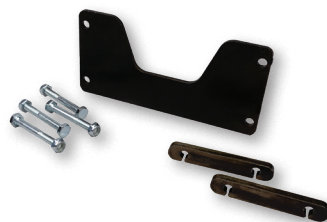
Parts for AMF® Machines

MISCELLANEOUS



DISTRIBUTOR ANTI-SWAY KIT

PPP-ASK



HEAVY DUTY SHUTTLE STRAP

PPP-HDSS



ORIENT PAN TURN MAT (2 PER PKG)

PPP-OPM



SPOTTING CUP SPACER (10 PER PKG)

PPP-SCS



8270 TABLE WIRING HARNESS

PPP-TWH

REV. 202312



Kegel Heavy Duty Hand Cleaner removes stubborn industrial soils, grease, oil, tar, paint, and even lane oil from the skin without harsh solvents.


162-8501: 2.5 Liter Bottle w/Dispenser

162-0500: 2.5 Liter Hand Cleaner Refill (for use with dispenser)

162-0501: Hand Cleaner Dispenser

162-0504: 13.5 oz. Bottle





2023-24 PINSETTER PARTS

www.kegel.net

Toll Free (US Only): 800 - 280 - BOWL (2695)

Fax: 863 - 734 - 0204

International: 863 - 734 - 0200

1951 Longleaf Boulevard
Lake Wales, FL 33859 USA

