



INSTALLATION INSTRUCTIONS

PART NUMBER	154-8284
PART DESCRIPTION	HANDLE REINFORCEMENT KIT
REV DATE	10/30/2002
MACHINE MODELS	ALL MACHINES



Basic knowledge of the lane machine including mechanical and electrical

TOOLS NEEDED:

Electric Drill
7/16 Wrench

Center Punch
9/16 Wrench

17/64 Drill bit



TECHNICAL NOTE

Please thoroughly read the instructions prior to performing the installation of this assembly.

To avoid any potential problems, if at any time during the process you have a question, stop and contact our Tech Support department at the numbers listed below.

Please visit our growing library of videos to see if these instructions are available!



www.youtube.com/user/KegelBowling81



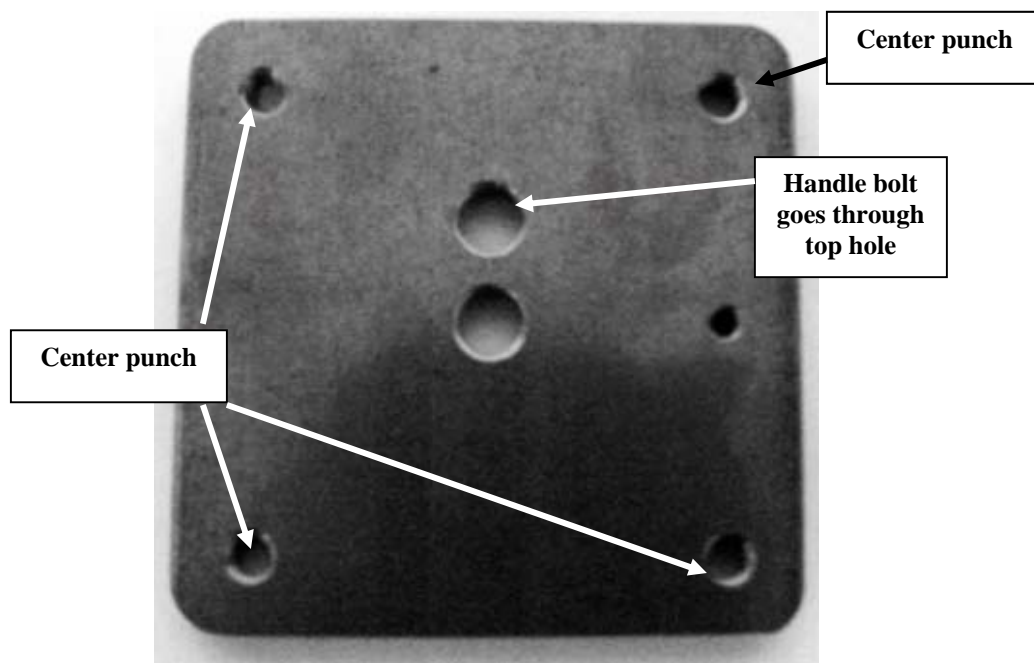
- Place orders with Distributor
- Maintenance reminders on phone
- Software updates
- How to videos

Take full control of your lane machine at My.kegel.net

Kegel's Lane Maintenance Central:
Within USA - 1-800-280-2695
Outside USA - +1 863-734-0200
via e-mail at LMC@Kegel.net
website www.kegel.net



1. Remove power from the machine. Lay machine down in the operating position.
2. Loosen and remove the fasteners that secure the handle to the frame. Set aside for re-installation.
3. Take one of the bolts that secured the handle to the frame and thread into the top hole (see figure next page), of the two holes in the center of the plate.
4. Slide the bolt through the handle bolt hole in the frame (from the outside). Adjust plate so that it is square with the frame. Once plate is square with the frame, hold plate securely so that it does not move. Using a center punch mark each of the holes in the four corners of the plate on the frame (see figure next page).
5. Remove the plate and drill hole locations with a sharp 17/64 drill bit.
6. Remove the handle bolt from the plate.



7. Place plate on inside of frame and line up holes. Slide fasteners (bolt, lockwasher, and flat washer) through frame and thread into plate. Tighten fasteners down securely.
8. Repeat steps 3 through 7 for the other side of the machine.
9. Slide handle bolts through handle and back through holes in the frame. Thread bolts into new plates. Be sure to use all fasteners you removed earlier from the handle.



- Place orders with Distributor
- Maintenance reminders on phone
- Software updates
- How to videos

Take full control of your
lane machine at
My.kegel.net

Kegel's Lane Maintenance Central:
Within USA - 1-800-280-2695
Outside USA - +1 863-734-0200
 via e-mail at LMC@Kegel.net
 website www.kegel.net

