



INSTALLATION INSTRUCTIONS

PART NUMBER	158-8731
PART DESCRIPTION	3" CASTER UPGRADE
REV DATE	5/24/17
MACHINE MODELS	ION / KW MODEL D



Basic knowledge of the lane machine including mechanical and electrical

TOOLS NEEDED:

9/16" Wrench

Ratchet

9/16" Socket

Dremel Tool & Cutting Shaping Tool #543 OR Handheld Jigsaw

Template Decals

PARTS INCLUDED:

(2) 153-0001 3" Transport Caster

(2) 153-6421S Lane-to-Lane Front Caster Spacer

(2) 158-6454 Rear Caster Spacer

(2) 153-9402 Flanged Bushing – 3/8" x 1/2" x 1/2"

(2) 153-2068 HHCS 3/8-16 x 1-1/2"

(4) 153-2066 HHCS – 3/8-16 x 1"

(2) 153-2027 3/8-16 Jam Nut

(2) 153-2025 3/8-16 Hex Nut

(8) 153-2016 3/8" Lock Washer

(10) 153-2006 3/8" Flat Washer

(2) 153-2069 HHCS 3/8-16 x 2"



TECHNICAL NOTE

Please thoroughly read the instructions prior to performing the installation of this assembly.

To avoid any potential problems, if at any time during the process you have a question, stop and contact our Tech Support department at the numbers listed below.

Please visit our growing library of videos to see if these instructions are available!



www.youtube.com/user/KegelBowling81



Take full control of your lane machine at My.kegel.net

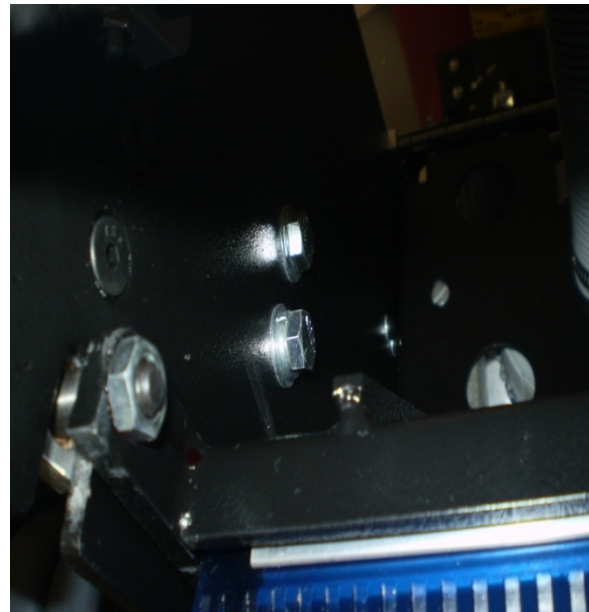
- Place orders with Distributor
- Maintenance reminders on phone
- Software updates
- How to videos

Kegel's Lane Maintenance Central:
Within USA - 1-800-280-2695
Outside USA - +1 863-734-0200
via e-mail at LMC@Kegel.net
website www.kegel.net



- 1) Ensure that the power is off to the machine. Lay the machine down in the operating position, and remove the molded guard from both sides.
- 2) Stand the machine upright, in the transport position.
- 3) Using the 9/16" wrench & ratchet, remove the existing 2" dual casters from the caster-mounting angle on both sides of the machine.
- 4) Next, remove the mounting angle from both sides of the machine.
- 5) Place a 3/8" Lock Washer & 3/8" Flat Washer onto each of the four 3/8-16 x 1" bolts. Push a bolt through the top hole in the caster-mounting angle and screw into the top (angled cut) tapped hole in the Rear Caster Spacer until finger tight. Do not tighten completely at this time.
- 6) Place a 3/8" Flat Washer onto each of the 3/8-16 x 1-1/2" bolt. Push this bolt through the top caster mount hole in the frame, from the inside, and through the spacer and caster mount angle. On the outside, place a 3/8" Lock Washer followed by a 3/8-16 Jam Nut until finger tight. Do not tighten completely at this time.
- 7) Push the two remaining 3/8-16 x 1" (from step #4) through the bottom hole in the frame, and screw into the tapped hole in the bottom of the spacer.
- 8) Tighten all bolts completely at this time.

Walker

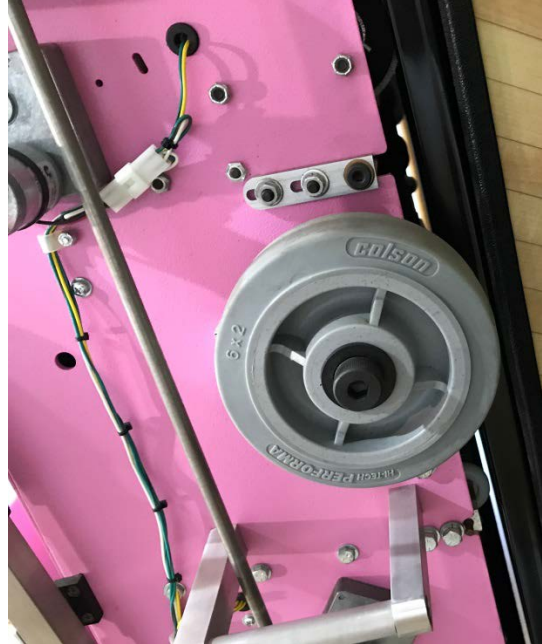
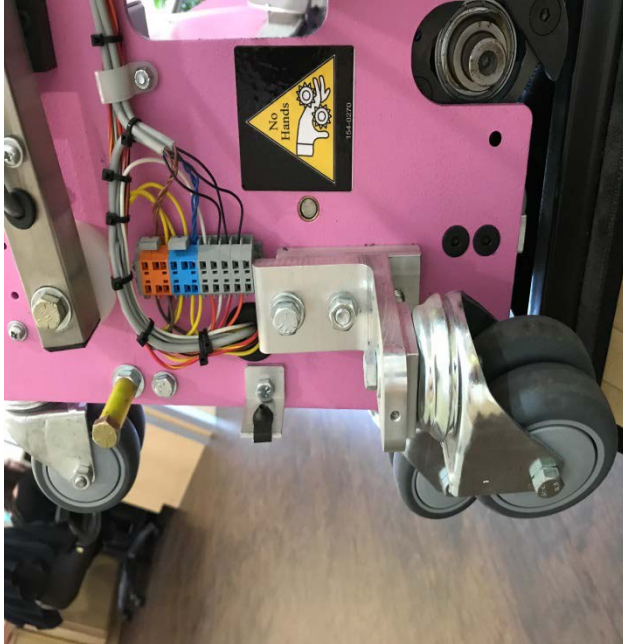


- Place orders with Distributor
 - Maintenance reminders on phone
 - Software updates
 - How to videos
- Take full control of your lane machine at My.kegel.net

Kegel's Lane Maintenance Central:
Within USA - 1-800-280-2695
Outside USA - +1 863-734-0200
via e-mail at LMC@Kegel.net
website www.kegel.net



Ion



- 9) Place a 3/8" Flat Washer onto one of the 3/8-16 x 2". Push bolt through the hole in the caster mount angle from the topside. Slide a Lane-to-Lane Front Caster Spacer onto each bolt up against the underside of the angle.
- 10) Push the Flanged Bushing 3/8" x 1/2" x 1/2" into the mounting hole of the 3" Transport Caster on the same side as the rubber wheel. Slide the wheel on the mounting bolt. Place a 3/8" Flat Washer and a 3/8" Lock Washer on the bolt & secure using a 3/8-16 Hex Nut. Tighten completely.
- 11) Using a pair of scissors, cut along the dotted lines of the template decals provided. Using the caster mount hole in the guards as reference, stick the left cover decal on the left guard and the right cover decal on the right guard.
- 12) It is recommended to use a Dremel power tool with Dremel Cutting/Shaping wheel #543 to cut the guards. A small hand-held jig saw also works well. Cut along the inside of the template to enlarge the cut-out in the plastic guards. This allows the guards to fit over the new caster assys.
- 13) Remove any burrs or sharp edges that may be present on the guards.
- 14) Lay the machine back down in the operating position and re-install the guards.



- Take full control of your lane machine at My.kegel.net
- Place orders with Distributor
 - Maintenance reminders on phone
 - Software updates
 - How to videos

Kegel's Lane Maintenance Central:
Within USA - 1-800-280-2695
Outside USA - +1 863-734-0200
via e-mail at LMC@Kegel.net
website www.kegel.net

