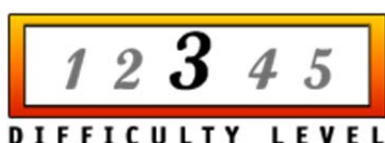




## INSTALLATION INSTRUCTIONS

PART NUMBER	158-8281R
PART DESCRIPTION	CROSSFIRE RELAY UPGRADE KIT
REV DATE	9/24/2007
MACHINE MODELS	CROSSFIRE A



Basic knowledge on ALL aspects of the lane machine, including mechanical, electrical and operating software

### TOOLS NEEDED:

Phillips Screwdriver

Flat head screwdriver



#### TECHNICAL NOTE

Please thoroughly read the instructions prior to performing the installation of this assembly.

To avoid any potential problems, if at any time during the process you have a question, stop and contact our Tech Support department at the numbers listed below.

Please visit our growing library of videos to see if these instructions are available!



[www.youtube.com/user/KegelBowling81](http://www.youtube.com/user/KegelBowling81)



- Place orders with Distributor
- Maintenance reminders on phone
- Software updates
- How to videos

Take full control of your lane machine at [My.kegel.net](http://My.kegel.net)

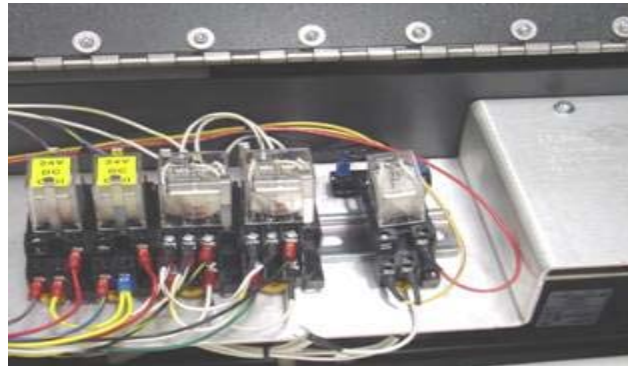
**Kegel's Lane Maintenance Central:**  
Within USA - 1-800-280-2695  
Outside USA - +1 863-734-0200  
via e-mail at [LMC@Kegel.net](mailto:LMC@Kegel.net)  
website [www.kegel.net](http://www.kegel.net)



1. Slide the (4) relays as far to the left on the Din Rail as shown.



2. Move the Brake Resistor as far to the right in its clamp and install the LY2 Relay on to the Din Rail.



3. Remove the Black/Green wire from CR1 as shown to gain access to the White wire terminal below it.



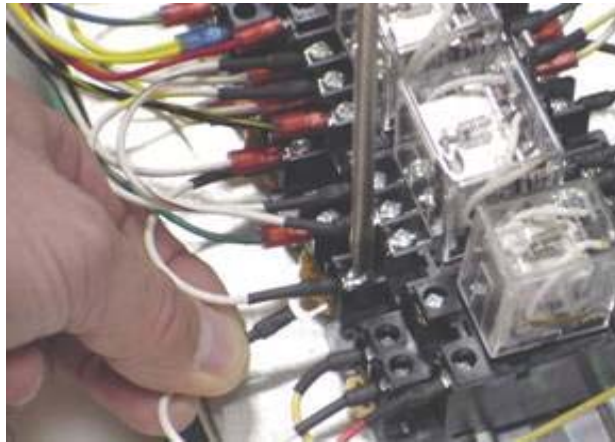
- Place orders with Distributor
- Maintenance reminders on phone
- Software updates
- How to videos

Take full control of your  
lane machine at  
[My.kegel.net](http://My.kegel.net)

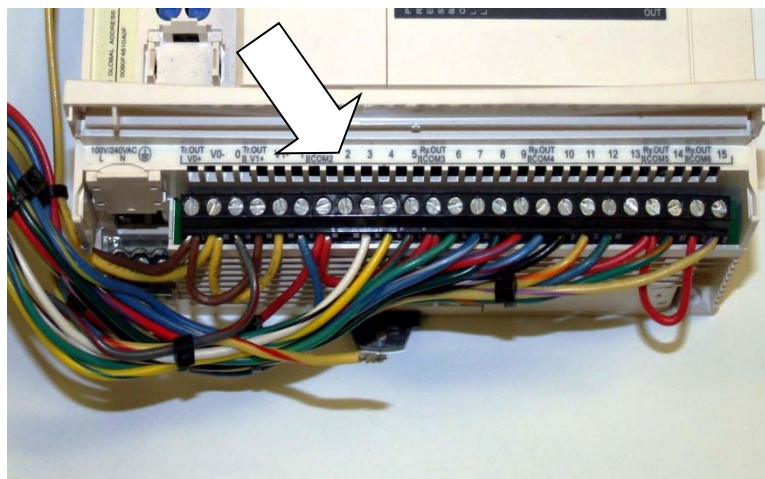
**Kegel's Lane Maintenance Central:**  
**Within USA - 1-800-280-2695**  
**Outside USA - +1 863-734-0200**  
via e-mail at [LMC@Kegel.net](mailto:LMC@Kegel.net)  
website [www.kegel.net](http://www.kegel.net)



4. Loosen the terminal with the White wire and install the white wire #4 from the new relay with it as shown.



5. Replace the Black/Green wire that you removed in the previous step.
6. Remove the Yellow/Red wire from output #2 as shown.



7. Twist this Yellow/red wire you just removed and the Yellow/Red wire # 1 from the new relay together, using the supplied wire nut twist onto wires till tight as shown below.

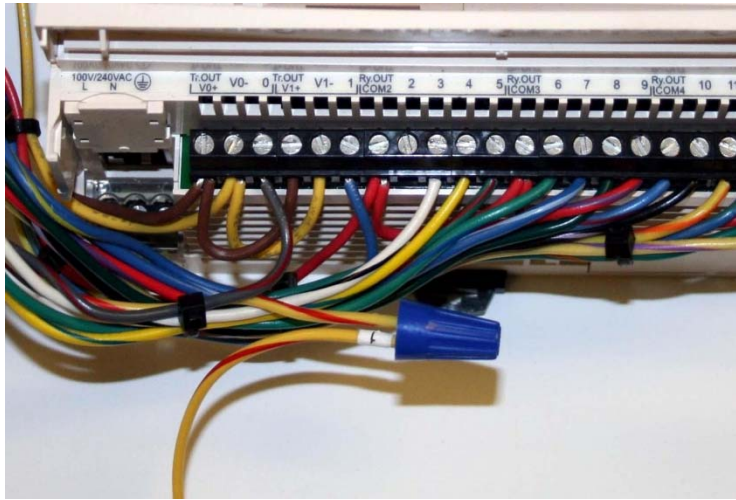


- Place orders with Distributor
- Maintenance reminders on phone
- Software updates
- How to videos

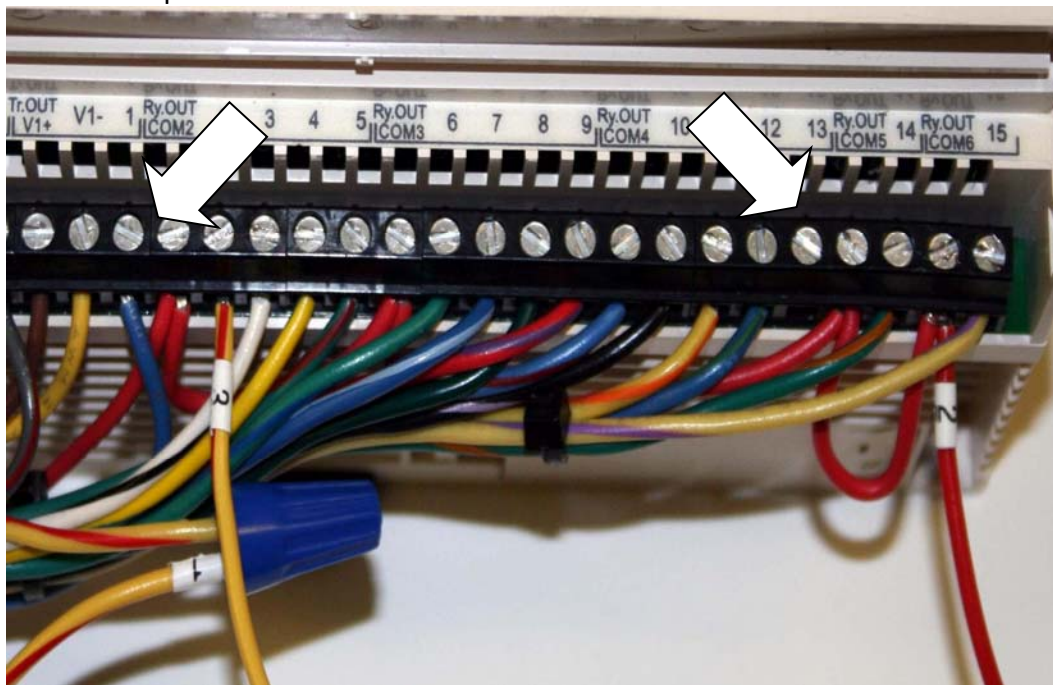
Take full control of your  
lane machine at  
[My.kegel.net](http://My.kegel.net)

**Kegel's Lane Maintenance Central:**  
**Within USA - 1-800-280-2695**  
**Outside USA - +1 863-734-0200**  
via e-mail at [LMC@Kegel.net](mailto:LMC@Kegel.net)  
website [www.kegel.net](http://www.kegel.net)





8. Now screw Yellow/Red wire # 3 from new relay into output # 2, and Red wire # 2 into COM 6 as shown in picture below.



9. Wire tie wires neatly to harness, snap relay into relay base according to voltage of the machine.



- Place orders with Distributor
- Maintenance reminders on phone
- Software updates
- How to videos

Take full control of your lane machine at [My.kegel.net](http://My.kegel.net)

**Kegel's Lane Maintenance Central:**  
Within USA - 1-800-280-2695  
Outside USA - +1 863-734-0200  
via e-mail at [LMC@Kegel.net](mailto:LMC@Kegel.net)  
website [www.kegel.net](http://www.kegel.net)

