



# INSTALLATION INSTRUCTIONS

PART NUMBER	158-8631W
PART DESCRIPTION	BATTERY PACK CABLE REPLACEMENT
REV DATE	4/20/2020
MACHINE MODELS	MACHINES WITH BACKPACK FEATURE



Basic knowledge of the operation of the lane machine

#### TOOLS NEEDED:

Phillips Screwdriver  
Voltmeter

10MM Wrench

Wire Cutters

#### PARTS INCLUDED:

1 - 158-8631W BATTERY BOX REPLACEMENT CABLE



#### TECHNICAL NOTE

Please thoroughly read the instructions prior to performing the installation of this assembly.

To avoid any potential problems, if at any time during the process you have a question, stop and contact our Tech Support department at the numbers listed below.

Please visit our growing library of videos to see if these instructions are available!  
 [www.youtube.com/user/KegelBowling81](http://www.youtube.com/user/KegelBowling81)

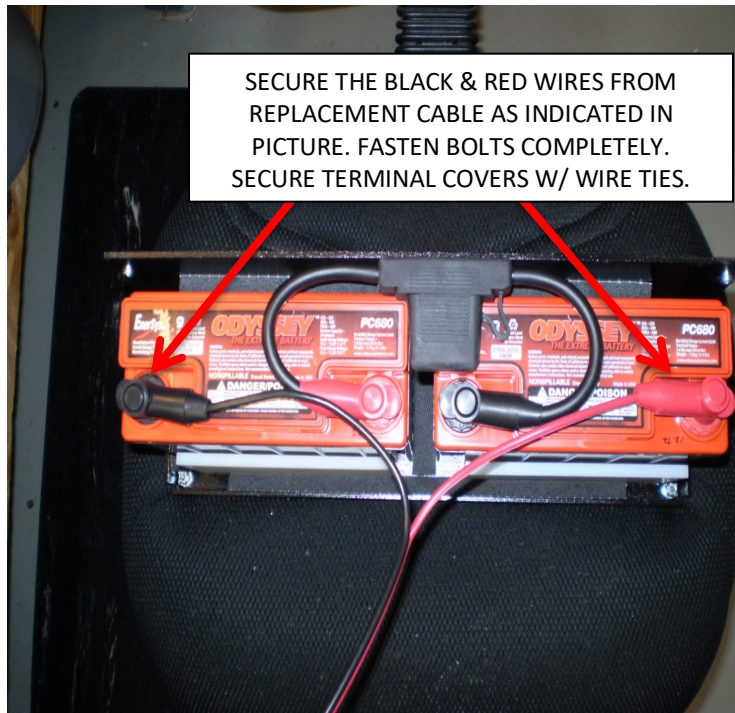
KEGEL TECH SUPPORT:  
Within USA - 1-800-280-2695  
Outside USA - +1 863-734-0200  
via e-mail at [LMC@Kegel.net](mailto:LMC@Kegel.net)  
website [www.kegel.net](http://www.kegel.net)



1. Loosen and remove the (4) 153-2110 10-24 x 3/8" FHMS that secure the front to the back of the battery pack.
2. Carefully lift and separate the battery box front from the battery box back to access the batteries inside
3. Using dykes or side cutters, clip the wire ties that secure the red and black battery terminal covers on the defective battery pack cables only. Do not remove the wire ties from the fuse link covers.
4. Using a 10MM wrench, loosen and remove the black wire from the LEFT battery. Remove the terminal cover.
5. Using a 10MM wrench, loosen and remove the red wire from the RIGHT battery. Remove the terminal cover.



6. Pull the defective cable through the grommet on the battery box front.
7. Push the new cable ring terminals through the grommet in the battery box front.
8. Install the black & red terminal covers onto the new cables.
9. Install the red wire onto the RIGHT battery (POSITIVE), making sure the flat side of the ring terminal is down against the battery. Tighten the bolt completely.
10. Install the black wire onto the LEFT battery (NEGATIVE), making sure the flat side of the ring terminal is down against the battery. Tighten the bolt completely.
11. Slide the terminal covers on over the terminal bolts and secure in place with the wire ties included.



12. Re-install the battery box front back onto the battery box back. Secure together using the (4) 153-2110 10-24 x 3/8" FHMS.
13. Set the multi-meter to the DC Voltage setting. Check the voltage at the battery pack cable plug to ensure proper battery cable connections.