



INSTALLATION INSTRUCTIONS

PART NUMBER	158-8635
PART DESCRIPTION	BATTERY PACK INSTALLION
REV DATE	11/10/2010
MACHINE MODELS	MODEL B BATTERY OPERATED MACHINES



Basic knowledge of ALL aspects of the lane machine, including mechanical, electrical and operating software

TOOLS NEEDED:

Power Drill

3/16" Drill Bit

5/16" Drill Bit

10MM Socket or Wrench

7/16" Wrench

Wire cutters

Phillips Screwdriver

5/32" Wrench



TECHNICAL NOTE

Please thoroughly read the instructions prior to performing the installation of this assembly.

To avoid any potential problems, if at any time during the process you have a question, stop and contact our Tech Support department at the numbers listed below.

Please visit our growing library of videos to see if these instructions are available!



www.youtube.com/user/KegelBowling81



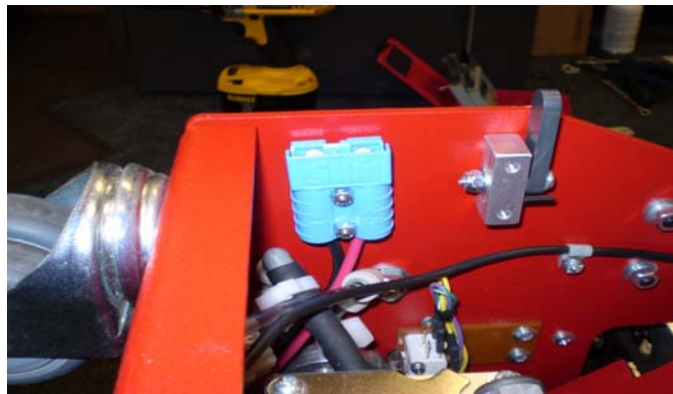
- Place orders with Distributor
- Maintenance reminders on phone
- Software updates
- How to videos

Take full control of your lane machine at My.kegel.net

Kegel's Lane Maintenance Central:
Within USA - 1-800-280-2695
Outside USA - +1 863-734-0200
via e-mail at LMC@Kegel.net
website www.kegel.net



1. Turn the machine power OFF. Lay the machine down in the operating position if not already.
2. Remove the left side (7-pin) molded guard from the machine (6 screws).
3. Remove the battery charger (4 screws).
4. Remove the four (4) screws securing the PC Plate. Leave PC Plate in place at this time.
5. Unscrew the 'Battery charge indicator cable' from the battery. Remove indicator.
6. Remove the 5/8" harness clamp to the left of the cleaner pump assy that secures the harness to the rear wall.
7. On the end w/ the elongated terminals where the wire is separated approx 2", push the 10AWG bonded wire through the grommet underneath the brush lift motor. Feed wires up along the harness to the top of the side plate.
8. Using the template supplied, mark & drill two 3/16" holes in the panel from the outside of the machine. Be very careful not to hit the cleaner pump or tank hoses on the inside.
9. Take the wires and snap the terminals into the blue housing w/ the red to the positive (+) location in the plug & the black to the negative (-) location. Make sure the notch on the bottom, front of each terminal snaps over the plate strip in each side of the housing. Pull on each wire to make sure crimp & connections are secure.
10. Place a #6 Flat Washer onto each of the 6-32 x 1" MS. Push the screws through the holes drilled in step #8 from the outside. Place the blue housing on over the screws so the rounded sides of the plug are towards the cleaner pump in the machine (red will be on inside & black nearest the rear wall). Secure on the inside w/ the (2) 6-32 lock nuts. REF PICTURE.



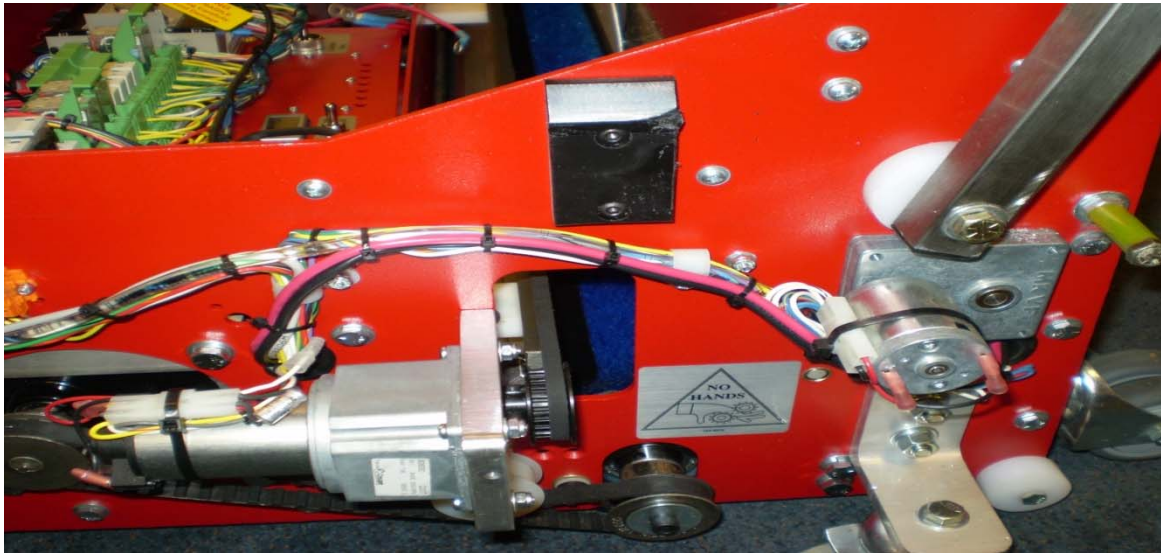
- Place orders with Distributor
- Maintenance reminders on phone
- Software updates
- How to videos

Take full control of your
lane machine at
My.kegel.net

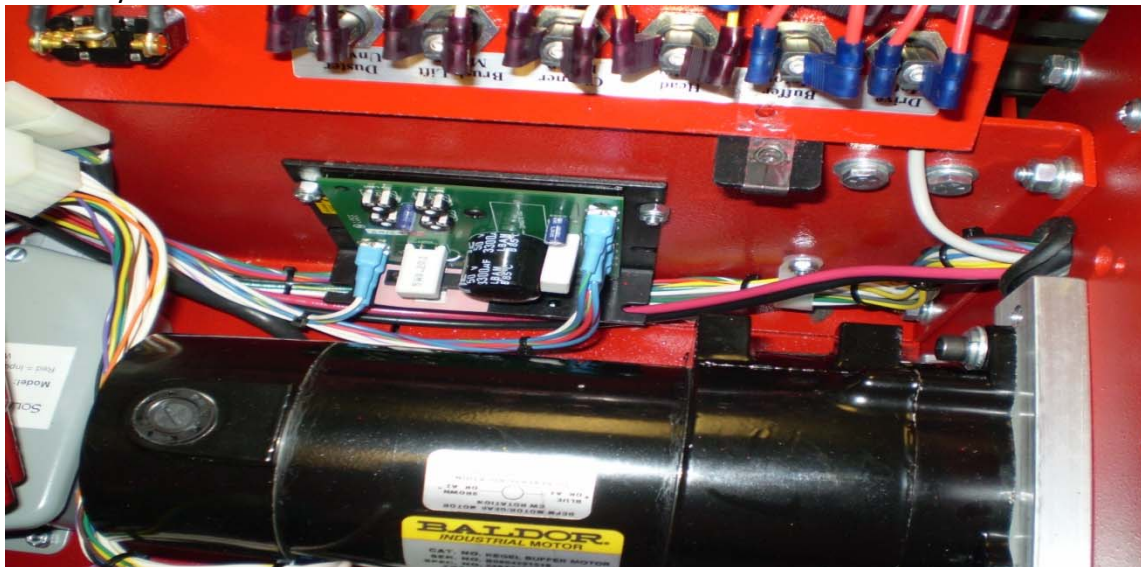
Kegel's Lane Maintenance Central:
Within USA - 1-800-280-2695
Outside USA - +1 863-734-0200
 via e-mail at LMC@Kegel.net
 website www.kegel.net



11. Pull all slack out of the wire. Secure harness and 10AWG w/ the ¾" harness clamp provided w/ the kit.
12. Feed the 10AWG wires along the harness on the outside of the machine and feed the ring terminals through the grommet behind the head drive motor and into the electrical compartment. Wire tie as necessary to the harness. REF PICTURE.



13. Pull the PC Plate up and rest it against the Splash Guard. Continue to feed the 10AWG wire along the harness on the inside of the electrical compartment, through the ¾" wire clamp on the duster compartment wall and over behind the batteries. Wire tie as necessary. REF PICTURES.

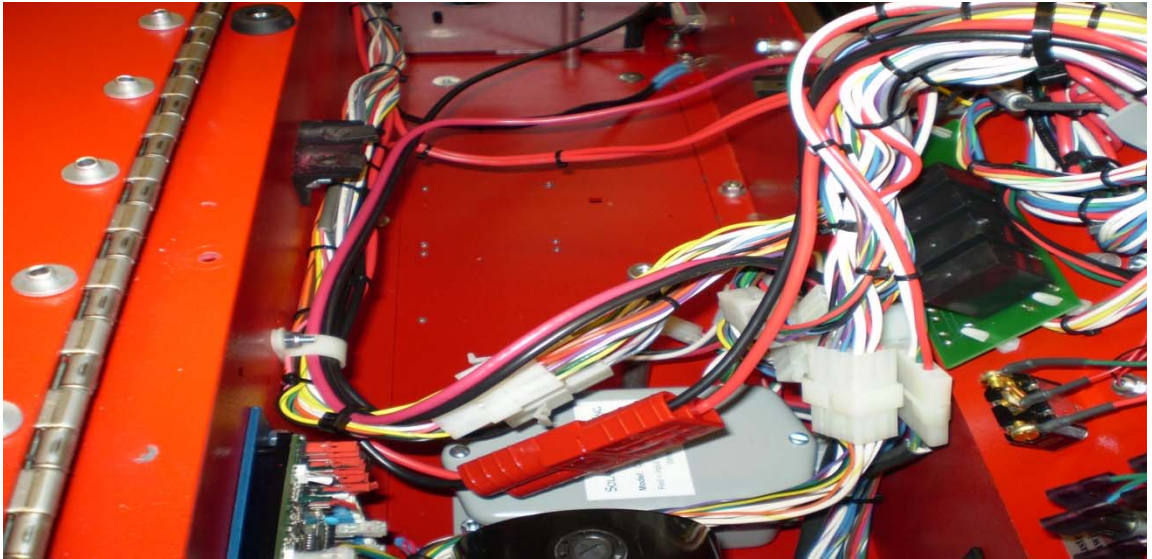


- Place orders with Distributor
- Maintenance reminders on phone
- Software updates
- How to videos

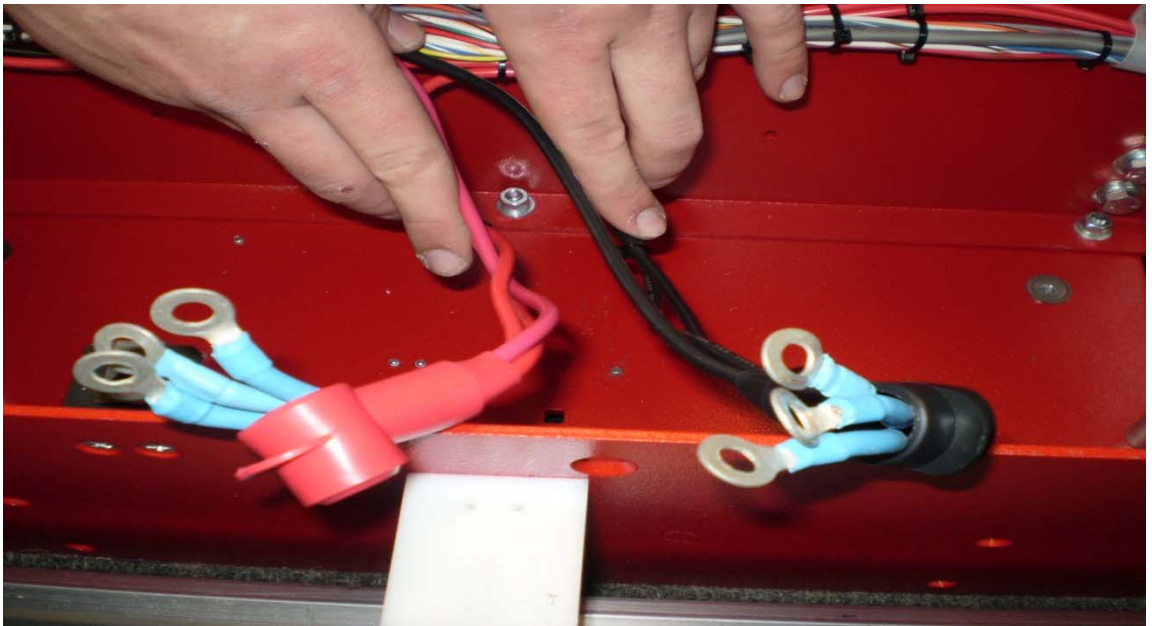
Take full control of your
lane machine at
My.kegel.net

Kegel's Lane Maintenance Central:
Within USA - 1-800-280-2695
Outside USA - +1 863-734-0200
 via e-mail at LMC@Kegel.net
 website www.kegel.net





14. Separate the two wires at this time, running the red wire along the red harness wires to the positive battery terminal & the black wire along the black harness wires to the negative battery terminal.



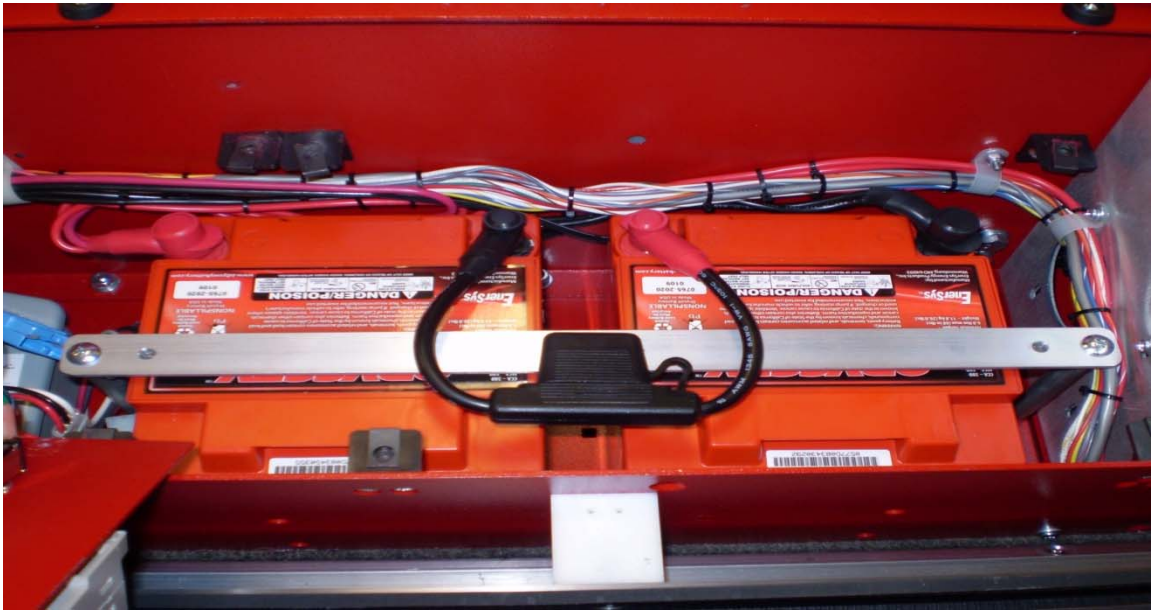
- Place orders with Distributor
- Maintenance reminders on phone
- Software updates
- How to videos

Take full control of your lane machine at My.kegel.net

Kegel's Lane Maintenance Central:
Within USA - 1-800-280-2695
Outside USA - +1 863-734-0200
via e-mail at LMC@Kegel.net
website www.kegel.net



15. Using the 10MM socket or wrench, loosen and remove the bolt securing the black wires to the negative battery location. Remove the existing black battery terminal cover from the wires. Feed all of the black wires into the new larger black cover supplied with the kit. Secure the wires back onto the battery using the bolt and tighten completely. Slide cover down over the ring terminals & bolt. Secure the cover in place using a 4" wire tie.
16. Using the 10MM socket or wrench, loosen and remove the bolt securing the red wires to the positive battery location. Remove the existing red battery terminal cover from the wires. Feed all of the red wires into the new larger black cover supplied with the kit. Secure the wires back onto the battery using the bolt and tighten completely. Slide cover down over the ring terminals & bolt. Secure the cover in place using a 4" wire tie. REF PICTURE.



17. Re-install the battery charger back in place
18. Re-install the PC Plate back in place, being careful not to pinch any wires.
19. Turn the machine on at this time and check all inputs, outputs and for voltage at the new plug to ensure proper operation.
20. Re-install the molded guard on the left side of the machine.
21. Using the template included, mark & drill the (3) 5/16" holes through the front wall. Be careful not to hit the cleaner tank or hose.



- Place orders with Distributor
- Maintenance reminders on phone
- Software updates
- How to videos

Take full control of your
lane machine at
My.kegel.net

Kegel's Lane Maintenance Central:
Within USA - 1-800-280-2695
Outside USA - +1 863-734-0200
via e-mail at LMC@Kegel.net
website www.kegel.net



22. Place a ¼" Lock Washer and a ¼" Flat Washer onto each of the (3) ¼-20 x ¾" HHCS. Push the bolts through the holes drilled in the front wall from the inside, above the cleaner tank. Screw the bolts into the Battery Box Mount Bar & tighten completely.
23. Mount the Battery Box assy on the mounting bar and plug into the newly installed plug as necessary.

CHARGING

The Odyssey 680 Battery Pack will charge simultaneously with the batteries on board the lane machine.

After plugging your lane machine in to charge, simply plug in the battery pack next. By the time the machine batteries are charged up and ready to go, your battery pack will be charged as well.

Recharge the battery pack after each use and at least once a month when not in use.



- Place orders with Distributor
- Maintenance reminders on phone
- Software updates
- How to videos

Take full control of your
lane machine at
My.kegel.net

Kegel's Lane Maintenance Central:
Within USA - 1-800-280-2695
Outside USA - +1 863-734-0200
via e-mail at LMC@Kegel.net
website www.kegel.net

