



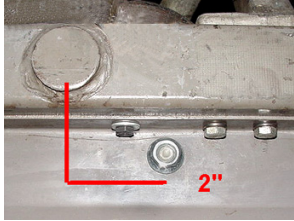
Rev.02-11-2020

Ball Wheel Pin Deflector

Part No. **PPP-BWPD-WG** – With gum rubber

Part No. **PPP-BWPD-NG** – Without gum rubber

Thanks to Dave Van Haelst from Savanna Illinois



Mount in existing hole (where present) in rear pin guard below and 2 inches to the right of lift rods mounting shaft. As shown below left, existing hole is off-center, exact positioning is unimportant. Enlarge hole size to 7/16". When hole is not present, see image below left for position or choose different location and drill hole.



Avoid configurations that may allow neck of pin to be caught between Pin Deflector and lift rods. Example at left shows no space between lift rods gum rubber and Pin Deflector but some configurations can tolerate greater spacing from lift rods.

To prevent a bowling pin leverage point, choose steel rod insertion depth that allows gum rubber to flex slightly higher than, or even with, lift rods gum rubber.

Lower most part of gum rubber should be high enough, from pinsetter components, to freely return to its natural position after deflections.

Example at left installed unaltered but gum rubber (11-1/2") and steel rod angle lengths (3-1/2" on each side of bend) may be altered to suit individual preferences.

Please Note - Once mounting positions have been chosen, **FIRMLY** secure serrated flange nuts and hose clamp.



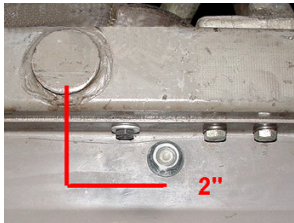
Rev.02-11-2020

Ball Wheel Pin Deflector

Part No. **PPP-BWPD-WG** – With gum rubber

Part No. **PPP-BWPD-NG** – Without gum rubber

Thanks to Dave Van Haelst from Savanna Illinois



Mount in existing hole (where present) in rear pin guard below and 2 inches to the right of lift rods mounting shaft. As shown below left, existing hole is off-center, exact positioning is unimportant. Enlarge hole size to 7/16". When hole is not present, see image below left for position or choose different location and drill hole.



Avoid configurations that may allow neck of pin to be caught between Pin Deflector and lift rods. Example at left shows no space between lift rods gum rubber and Pin Deflector but some configurations can tolerate greater spacing from lift rods.

To prevent a bowling pin leverage point, choose steel rod insertion depth that allows gum rubber to flex slightly higher than, or even with, lift rods gum rubber.

Lower most part of gum rubber should be high enough, from pinsetter components, to freely return to its natural position after deflections.

Example at left installed unaltered but gum rubber (11-1/2") and steel rod angle lengths (3-1/2" on each side of bend) may be altered to suit individual preferences.

Please Note - Once mounting positions have been chosen, **FIRMLY** secure serrated flange nuts and hose clamp.



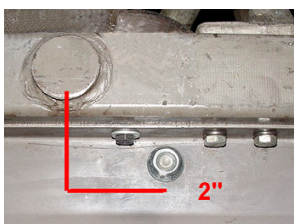
Rev. 02-11-2020

Ball Wheel Pin Deflector

Part No. **PPP-BWPD-WG** – With gum rubber

Part No. **PPP-BWPD-NG** – Without gum rubber

Thanks to Dave Van Haelst from Savanna Illinois



Mount in existing hole (where present) in rear pin guard below and 2 inches to the right of lift rods mounting shaft. As shown below left, existing hole is off-center, exact positioning is unimportant. Enlarge hole size to 7/16". When hole is not present, see image below left for position or choose different location and drill hole.



Avoid configurations that may allow neck of pin to be caught between Pin Deflector and lift rods. Example at left shows no space between lift rods gum rubber and Pin Deflector but some configurations can tolerate greater spacing from lift rods.

To prevent a bowling pin leverage point, choose steel rod insertion depth that allows gum rubber to flex slightly higher than, or even with, lift rods gum rubber.

Lower most part of gum rubber should be high enough, from pinsetter components, to freely return to its natural position after deflections.

Example at left installed unaltered but gum rubber (11-1/2") and steel rod angle lengths (3-1/2" on each side of bend) may be altered to suit individual preferences.

Please Note - Once mounting positions have been chosen, **FIRMLY** secure serrated flange nuts and hose clamp.