



Installation Instructions

PART NUMBER	164-8014A	
PART DESCRIPTION	WIRED VB MTR (UP TO 700 RPM) ASSY - BODINE	
REV DATE	10/12/20	
MACHINE MODELS	FLEX/FLEX WALKER 13-15 VB	

TOOLS NEEDED	PARTS
7/16" WRENCH 7/16" SOCKET RATCHET 9/16" WRENCH 9/16" SOCKET 1/8" ALLEN WRENCH	(1) 164-1215 – VB MTR (UP TO 700RPM) - BODINE (3) 153-1037 – 18-10AWG WIRE JOINT (1) 154-8133V – 18AMP PIN ADAPTER
TECHNICAL NOTE	
<p>Please thoroughly read the instructions prior to performing the installation of this assembly. To avoid any potential problems, if at any time during the process you have a question, stop, and contact our Tech Support department at the numbers listed below.</p>	

STEPS



KIT NEEDED:

A 164-8250 Hardware kit is needed! If you do not have this, contact your Distributor to order.

1. Remove guards
 - a. With the lane machine standing in the upright, transport position, remove the screws holding on the side guards.
 - b. Remove the Bumper wheel assembly.
 - c. Now set the machine down into the operating position and remove the last two screws holding the side guard onto the machine. There will be one in the cleaning compartment and one in the conditioning compartment.
 - d. Remove both the cleaner and the conditioning lid assemblies.
 - e. Remove the clear electrical panel cover.



Within USA - 1-800-280-2695
 Outside USA - +1 863-734-0200
www.kegel.net
 E-Mail: tech@kegel.net

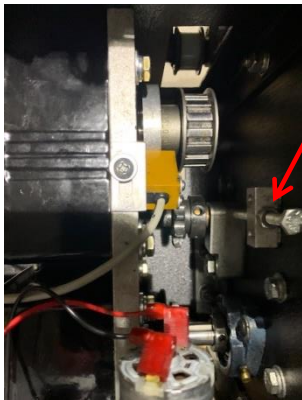
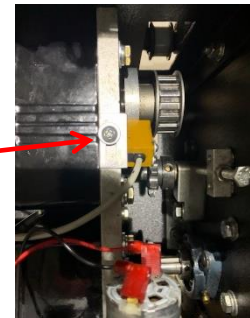
Rev. 9/20





Installation Instructions

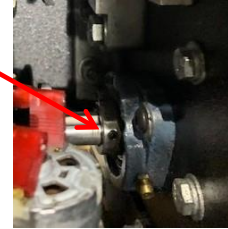
- f. Remove the three screws that fasten down the electrical panel and pull the panel up towards you.
- g. Remove the battery assembly.
2. With the machine in the operating position, fasten the center compartment down with one of the screws you removed in step 1. This will keep the center plate from falling when you stand the machine up in the following step 3.
3. Stand the machine up to the upright position, remove the buffer brush assembly from the machine.
4. Remove the drive chain by locating the master link and removing the link.
5. Lay the machine back down into the operating position and remove the screw that you put back into the plate in step 2.
6. Tilt the center plate up towards you and remove the cleaner speed control board from the wall.
7. Remove the recovery tank from the cleaning compartment.
8. Remove the (4) four knurled screws the hold the cleaner pump onto the inner wall as shown to the right.
9. Unplug the cleaner pump motor assembly and unscrew the cleaner pump motor from the wall. Remove from the center compartment.
10. Remove the screw holding the proximity sensor in place. So that you do not lose the screw, just thread it back into the motor mount block.
11. Loosen the jam nut that secures the bolt to the drive chain tensioner block and back the bolt out 3 or 4 turns.
12. Inside the conditioning compartment, remove the 2 screws on the right and the 2 screws on the left holding the track assembly in place.
13. Also, remove the 2 screws on the right and the 2 screws on the left holding the drive shaft cover on.
14. In the conditioner compartment, remove the two bolts on the left that hold the motor mounting bracket to the inside compartment.
15. In the cleaning compartment, remove the two bolts that are located under wear the cleaner pump was mounted.



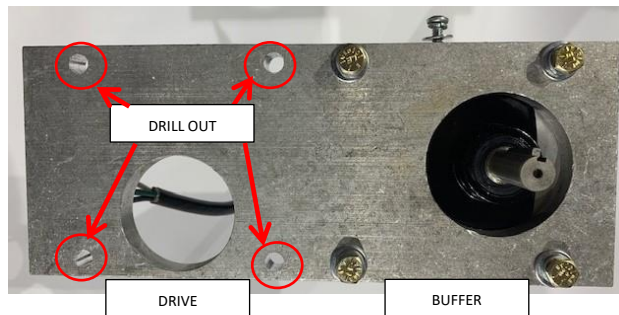


Installation Instructions

16. Unplug both the Drive motor assembly and the Buffer motor assembly.
17. With a long T-handle allen wrench, loosen the set screw in the bearing assembly that the shaft of the drive motor slides into.
18. Take the drive and buffer motor assembly and lift up and out of the center compartment. This will be a tight fit.
19. With the assembly on a work bench, whichever motor you are replacing, remove the sprocket, or pulley and cam from the motor.



20. Unbolt the motor from the bracket.
21. Take a 9/32 drill bit and drill out the threads on the motor bracket of the motor you are changing. **IMPORTANT:** Double check to ensure you are drilling out the correct holes.



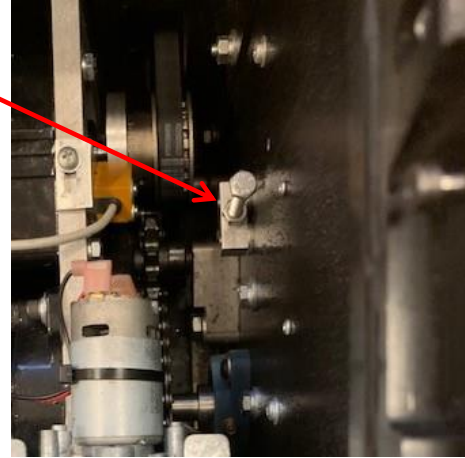
22. With the provided hardware (4) 153-2004, (4) 153-2014, (4) 164-2095 attach the new motor onto the motor bracket. These will be fastened from the outside in as shown.
23. Using the new keys, replace the sprocket, and/or the cam and pulley, back onto the shaft of the new motor.
24. Place the motor bracket assembly back into the machine. You will need to align the drive shaft with the bearing assembly and push the assembly all the way in. Do not fasten at this time.
25. This part is a bit difficult. Using your existing hardware, align the bracket assembly up with the holes in the inner wall. Partially thread them, but do not fasten until you have 4 bolts in place.
26. Fasten into place.
27. Plug the motors back in.
28. Replace the buffer brush assembly back into the lane machine. Wrap the buffer belt around the buffer motor and tighten up the idle pulley onto the buffer belt.
29. Replace the Drive chain for the motor. One little trick in helping to do this is to take a wire and loop it through each end of the drive chain link and pull together while place the master link on.





Installation Instructions

30. Tighten the bolt that applies tension to the drive chain and fasten the jam nut.
31. Replace the cleaner pump, cleaner speed control assembly and cleaner pump motor all into place.
32. With the machine in the operating position, go through the speeds of variable buff. They should be set to 100, 200, 500 and 700.
33. Check the walking features on the approach.
34. Replace the Lids, guards



Within USA - 1-800-280-2695
Outside USA - +1 863-734-0200
www.kegel.net
E-Mail: tech@kegel.net

Rev. 9/20

