



Installation Instructions

PART NUMBER	157-8816	
PART DESCRIPTION	TORCH LIGHT TRIGGER SYSTEM	
REV DATE	4/8/2019	
MACHINE MODELS	TORCH X	

TOOLS NEEDED	PARTS
1/8" Drill bit Phillips Screwdriver 11/32" Wrench Needle Nose Pliers	

TECHNICAL NOTE

Please thoroughly read the instructions prior to performing the installation of this assembly. To avoid any potential problems, if at any time during the process you have a question, stop and contact our Tech Support department at the numbers listed below.

STEPS

1. With the light bar laying on a workbench, remove the black cap off the lower light bar. Lift up on the vinyl cover in the track approximately a foot or so.

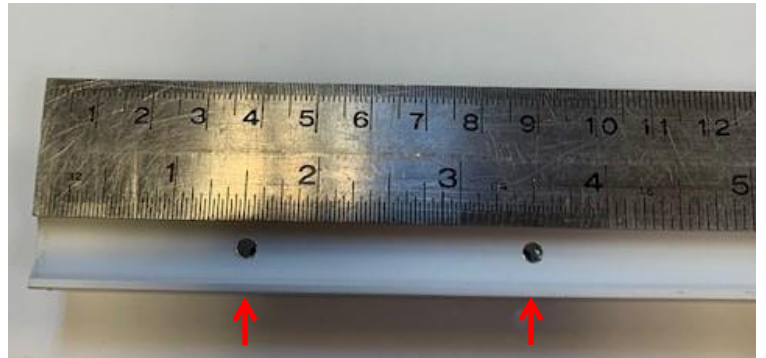


Within USA - 1-800-280-2695
 Outside USA - +1 863-734-0200
www.kegel.net
 E-Mail: tech@kegel.net

Rev. 9/20



- Using the diagram, mark the measurements at which you are to drill the $\frac{1}{8}$ " holes. The first hole is an $1\frac{1}{2}$ " from the bottom and the second hole is $3\frac{1}{2}$ " from the bottom as shown.



- Carefully drill the holes and blow out any metal shavings from the channel.
- Bolt on the switch assembly as shown. Using needle nose pliers helps to hold the nut inside the channel.



- Reinsert the vinyl cover in the track.

Switch Height Adjustment:

1. The switch can be adjusted to change difficulty or customize for your height of capping. Loosen the screw and adjust the height to be lower for easier or higher for harder.

