



Rev. 03-12-2020

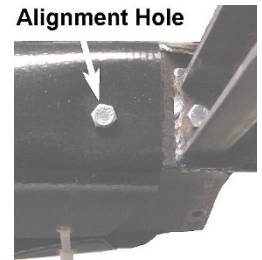
## A2 Cushion Cover

Part No. **PPP-CCA2**  
pkg of 1

Original cushions have unused holes, beyond curtain rod holders, that make for easy centering and holding of cushion covers during application of nylon cable ties.

[1a.] Place cover onto cushion, inserting both 5/16" bolts into available cover holes, before finger tightening nuts.

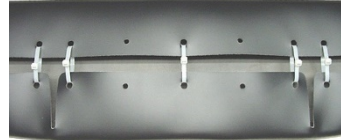
Use of alignment holes can be omitted to conventionally install cover.



For best results, begin inserting cable ties in the center segment working towards cushion ends.

1. Loosely cable-tie the 9 larger (top right image) holes first, then loosely apply cable ties into remaining smaller (bottom right image) holes.

2. Moderately secure all cable ties in a uniform manner. Moderately secured cable ties will better resist breakage and extremely firm securing is unnecessary for maintaining cushion cover position.



Rev. 03-12-2020

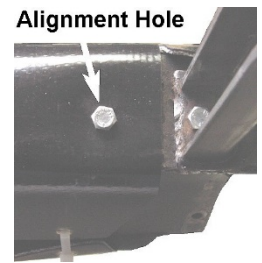
## A2 Cushion Cover

Part No. **PPP-CCA2**  
pkg of 1

Original cushions have unused holes, beyond curtain rod holders, that make for easy centering and holding of cushion covers during application of nylon cable ties.

[1a.] Place cover onto cushion, inserting both 5/16" bolts into available cover holes, before finger tightening nuts.

Use of alignment holes can be omitted to conventionally install cover.



For best results, begin inserting cable ties in the center segment working towards cushion ends.

1. Loosely cable-tie the 9 larger (top right image) holes first, then loosely apply cable ties into remaining smaller (bottom right image) holes.

2. Moderately secure all cable ties in a uniform manner. Moderately secured cable ties will better resist breakage and extremely firm securing is unnecessary for maintaining cushion cover position.



Rev. 03-12-2020

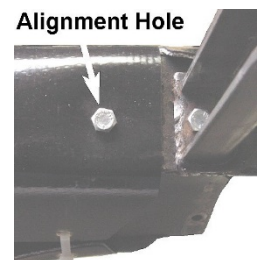
## A2 Cushion Cover

Part No. **PPP-CCA2**  
pkg of 1

Original cushions have unused holes, beyond curtain rod holders, that make for easy centering and holding of cushion covers during application of nylon cable ties.

[1a.] Place cover onto cushion, inserting both 5/16" bolts into available cover holes, before finger tightening nuts.

Use of alignment holes can be omitted to conventionally install cover.



For best results, begin inserting cable ties in the center segment working towards cushion ends.

1. Loosely cable-tie the 9 larger (top right image) holes first, then loosely apply cable ties into remaining smaller (bottom right image) holes.

2. Moderately secure all cable ties in a uniform manner. Moderately secured cable ties will better resist breakage and extremely firm securing is unnecessary for maintaining cushion cover position.

