

SECTION XI - Mechanical Drawings

Table of Contents

Edition 7:01

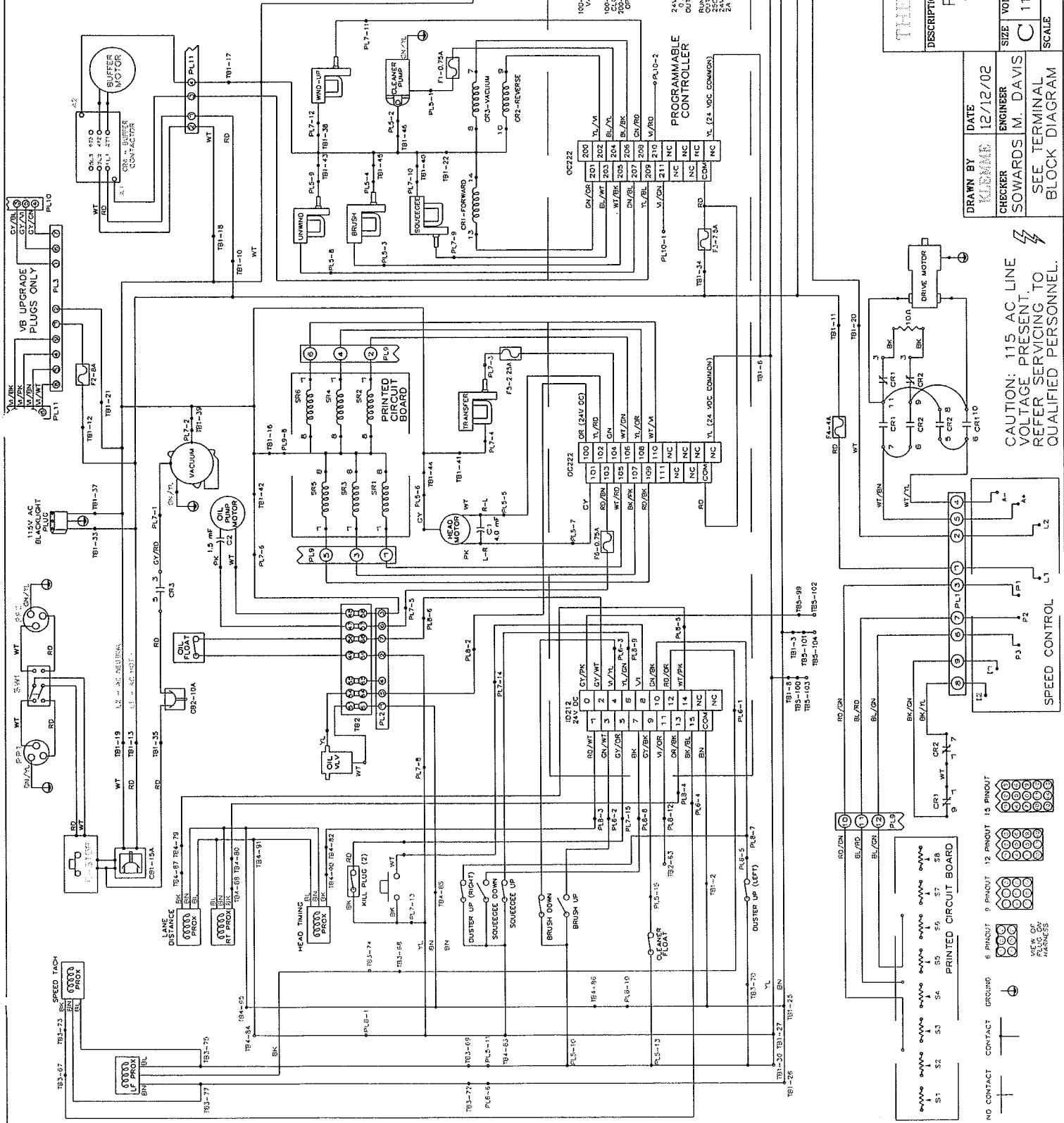
Electrical Wiring Diagram - 115V/60 Hz

Electrical Wiring Diagram - 230V/50 Hz

Terminal Block Wiring Diagram

Overhead View	Figure 1
Bottom View	Figure 2
Right Side	Figure 3
Left Side	Figure 4
PC Control Panel	Figure 5
DC Speed Control Board (Drive Motor)	Figure 6
Variable Speed Buffer Motor (Optional)	Figure 7
Conditioner Transfer Assembly	Figure 8
Squeegee Motor Assembly	Figure 9
Conditioning Pump and Motor Assembly	Figure 10
Lane Distance Proximity Sensor Assembly	Figure 11
Buffer Brush Lifting Motor Assembly	Figure 12
Cleaner Supply System	Figure 13
Duster Assembly	Figure 14
Attaching Parts Breakdown (Fasteners)	Page 1
Complete Parts List	Page 1

- LEC ID**
- C1 HEAD DRIVE CAP. (4.0 mF)
 - C2 OIL PUMP MOTOR CAPACITOR (1'S mF)
 - CB1 CIRCUIT BREAKER (MAIN-15A)
 - CB2 CIRCUIT BREAKER (VACUUM-10A)
 - CR1 VACUUM RELAY FOR DRIVE MOTOR (LY3)
 - CR2 VACUUM RELAY FOR DRIVE MOTOR (LY3)
 - F1 FUSE (0.75A - CLEANER PUMP)
 - F2 FUSE (0.75A - BUFFER BOARD)
 - F3 FUSE (4A - DRIVE BOARD)
 - F4 FUSE (2.25A - TRANSFER MOTOR)
 - F5 FUSE (0.75A - OIL PUMP MOTOR)
 - F6 FUSE (0.75A - OIL PUMP MOTOR)
 - PL1 SPEED CONTROL PLUG (DRIVE-9)
 - PL2 SLEW CONTROL PLUG (BUFFER-9)
 - PL3 POWER SUPPLY PLUG (PC-6)
 - PL4 LEFT SIDE HARNESS PLUG (15-PIN)
 - PL5 RIGHT SIDE HARNESS PLUG (15-PIN)
 - PL6 LEFT SIDE HARNESS PLUG (6-PIN)
 - PL7 RIGHT SIDE HARNESS PLUG (15-PIN)
 - PL8 PRINTED CIRCUIT BOARD DRIVE (12-PIN)
 - PL9 PRINTED CIRCUIT BOARD-BUFFER (6-PIN)
 - PL10 BUFFER CONTACTOR (9-PIN)
 - PP1 POWER INLET PLUG (LEFT)
 - PP2 POWER INLET PLUG (RIGHT)
 - SW1 POWER TOGGLE SWITCH (LIGHT)
 - TB1 TERMINAL BLOCK 1 (MAIN)
 - TB2 TERMINAL BLOCK 2 (OIL ASSY)
 - TB3 TERMINAL BLOCK 3 (LEFT SIDE)
 - TB4 TERMINAL BLOCK 4 (RIGHT SIDE)
 - TB5 TERMINAL BLOCK 5 (BUFFER TACH)



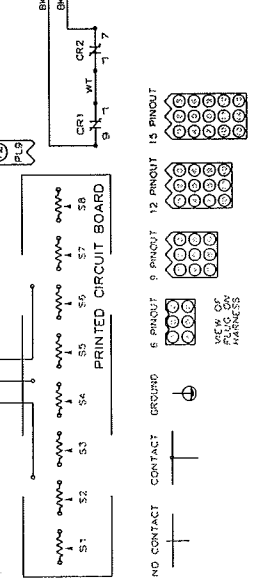
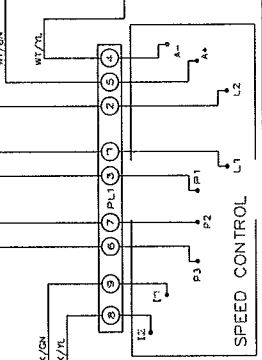
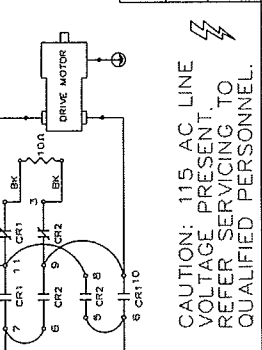
DESCRIPTION
 PHOENIX-S & STD AC
 115V WIRING DIAGRAM
 DO NOT SCALE DRAWING

THE KENNEDY COMPANY
 1951 LONGLEAF BLVD
 LAKE WALES, FL 33853
 (863) 734-0200

SIZE	VOLTAGE/Hz	PART NUMBER	SHEET
C	115/60	17-400(A)	1 OF 2
SCALE	N/A		

DRAWN BY KENNEDY
DATE 12/12/02
CHECKER SOWARDS
ENGINEER M. DAVIS

SEE TERMINAL BLOCK DIAGRAM



CAUTION: 115V AC LINE VOLTAGE PRESENT. REFER SERVICING TO QUALIFIED PERSONNEL.

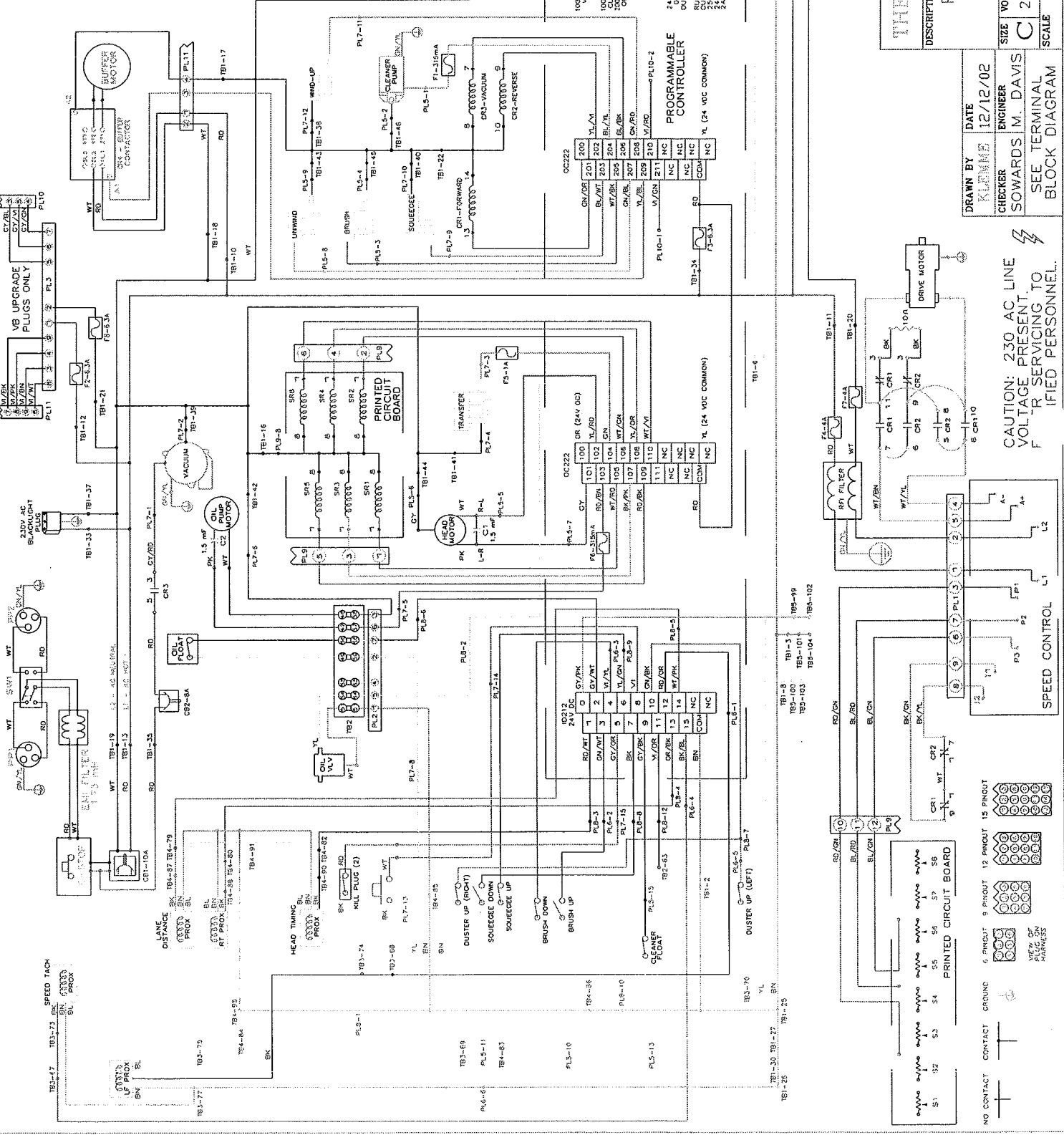
NO CONTACT
 CONTACT
 GROUND

PRINTED CIRCUIT BOARD
 6 PINOUT 9 PINOUT 12 PINOUT 15 PINOUT

PLUG ON HARNESS

- LEGEND**
- C1 HEAD UP VOLT CAPACITOR (1.5 mF)
 - C2 CIRCUIT BREAKER (MAIN-10A)
 - C3 REVERSE DRIVE RELAY (LY-4)
 - C4 DRIVE RELAY FOR DRIVE MOTOR (LY-3)
 - F1 FUSE (315mA - CLEANER PUMP)
 - F2 FUSE (6.3A - PC BOARD L1)
 - F3 FUSE (4A - DRIVE BOARD L1)
 - F4 FUSE (15mA ON PUMP MOTOR)
 - F5 FUSE (4A - DRIVE BOARD L2)
 - F6 FUSE (6.3A - BUFFER BOARD L2)
 - F7 SPEED CONTROL PLUG (DRIVE-9)
 - F8 SPEED CONTROL PLUG (BUFFER-9)
 - F9 POWER SUPPLY PLUG (PC-6)
 - F10 LEFT SIDE HARNESS PLUG (15-PIN)
 - F11 RIGHT SIDE HARNESS PLUG (15-PIN)
 - F12 PRINTED CIRCUIT BOARD-DRIVE (12-PIN)
 - F13 BUFFER CONTACTOR (9-PIN)
 - F14 POWER INLET PLUG (RIGHT)
 - F15 POWER TOGGLE SWITCH
 - TB1 TERMINAL BLOCK 1 (MAIN) (50V)
 - TB2 TERMINAL BLOCK 2 (CE-7) (50V)
 - TB3 TERMINAL BLOCK 3 (RIGHT SIDE)
 - TB4 TERMINAL BLOCK 4 (RIGHT SIDE)
 - TB5 TERMINAL BLOCK 5 (BUFFER TACH)

CE
COMPLIANT



THE KROPP CO.
1951 LONGLEAF BLVD
LAKE WALES, FL 33853
(863) 734-0200

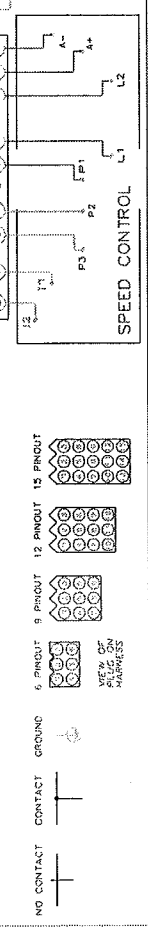
DESCRIPTION
PHOENIX-S & STD AC
230V WIRING DIAGRAM

DO NOT SCALE DRAWING

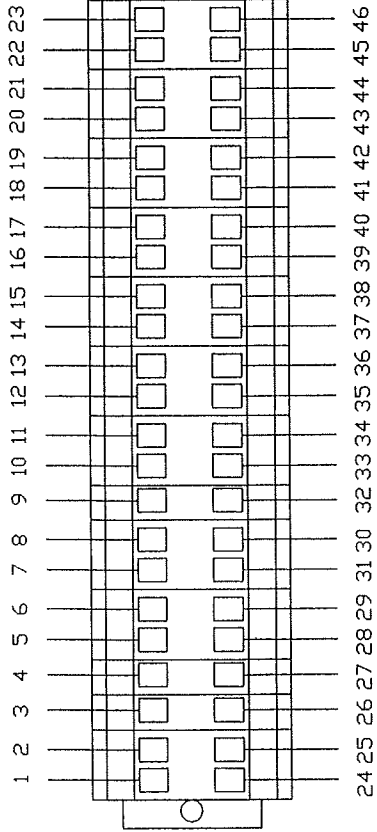
SIZE C 230/50
VOLTAGE/Hz 230/50
PART NUMBER 17-4450(A)
SCALE N/A
SHEET OF 2

DRAWN BY	DATE
KLEMM	12/12/02
CHECKER	ENGINEER
SOWARDS M. DAVIS	
SEE TERMINAL BLOCK DIAGRAM	

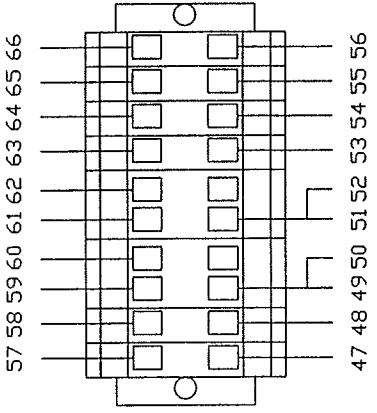
CAUTION: 230 AC LINE VOLTAGE PRESENT TO FIELD PERSONNEL.



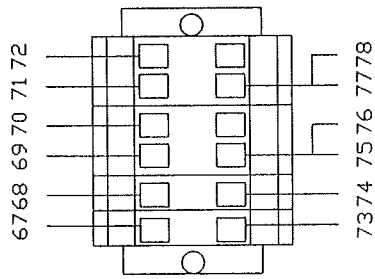
TB-1



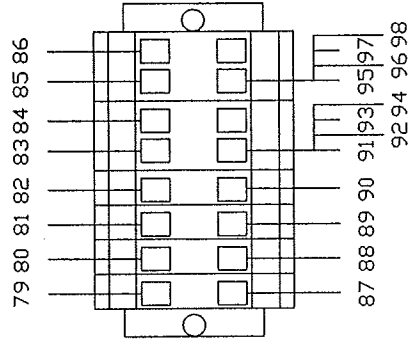
TB-2



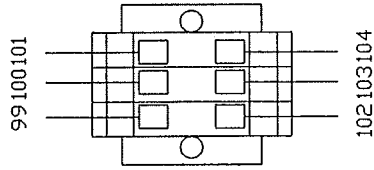
TB-3



TB-4



TB-5



THE KEGEL CO.
6800 US HWY 27 N
SEBRING, FL 33870
(863) 382-6568

DESCRIPTION

TERMINAL BLOCK
WIRING SCHEMATIC
DO NOT SCALE DRAWING

DRAWN BY CREWS	DATE 04/05/01
CHECKER SOWARDS	ENGINEER M. DAVIS

SIZE C	VOLTAGE/Hz 115/60	PART NUMBER 230/50
-----------	----------------------	-----------------------

SCALE N/A SHEET 2 OF 2

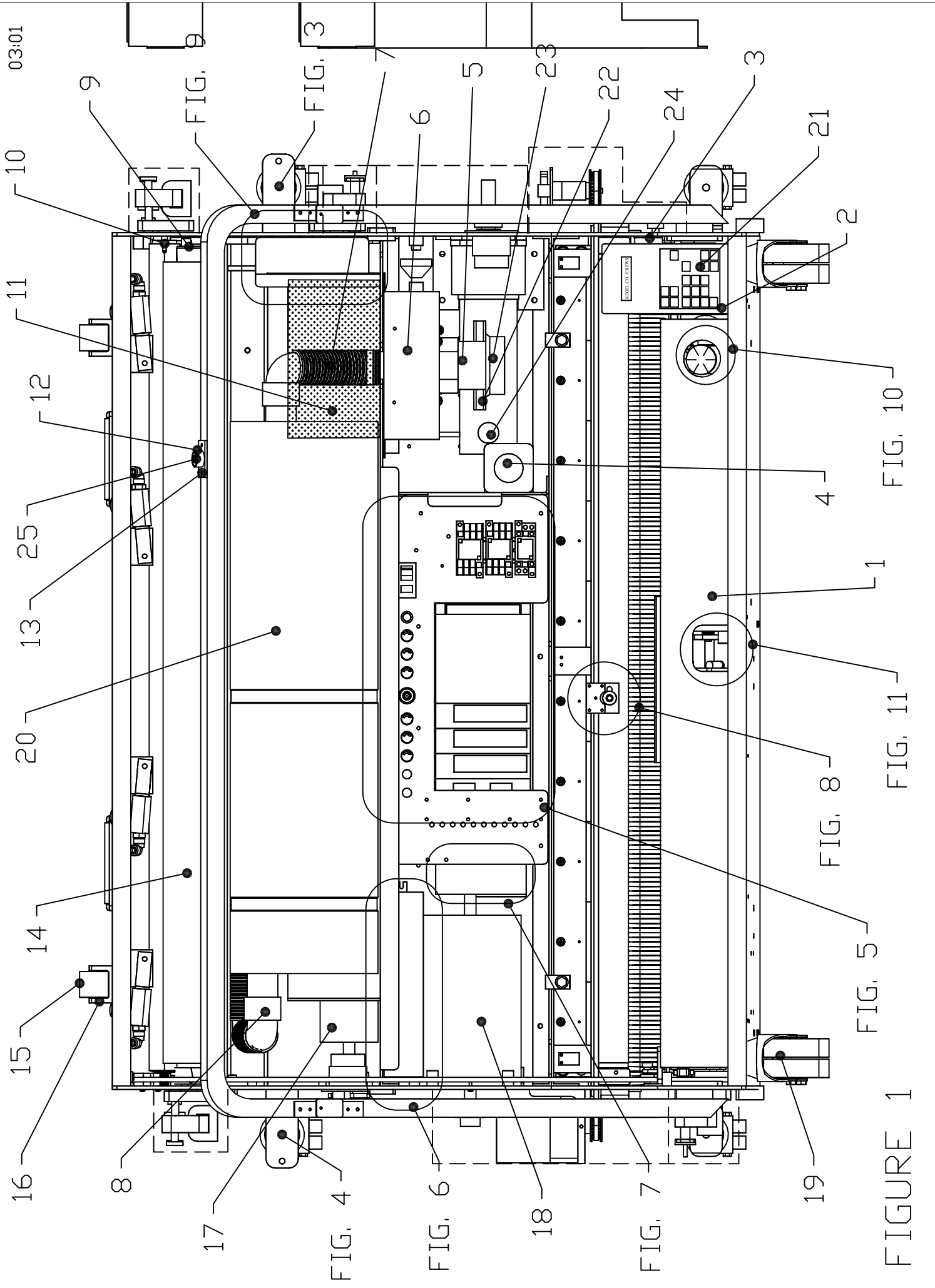


FIGURE 1

FIGURE NUMBER	INDEX NUMBER	PART NUMBER	PART NAME & DESCRIPTION
FIGURE 1 PART NUMBERS			
1	1	154-8318-1525	SPLASH GUARD ASSEMBLY
1	2	153-1002C	PRO01 KEYBOARD
1	3	154-6691	KEYBOARD MOUNT ANGLE
1	4	154-1250	EMERGENCY STOP CIRCUIT BREAKER ASSEMBLY
1	5	154-8805	VACUUM MOTOR ASSEMBLY - 115V
1	5	154-8805E	VACUUM MOTOR ASSEMBLY - 230V
1	6	154-8625	VACUUM MOTOR HOUSING - ALUMINUM
1	7	154-0260	FLEXIBLE HOSE STOCK FOR VACUUM (1-1/2" ID) (5" LENGTH)
1	8	153-8827	1-1/4 PVC ELBOW FOR RECOVERY TANK INLET (NO THREADS)
1	9	153-6850	UHMW LINODUSTER PLUG FOR CARDBOARD CORE
1	10	153-8202B	DUSTER SOLID DRIVE HUB ASSEMBLY (PVC-1/4-28)
1	11	154-8804	MAIN DRIVE SHAFT GUARD ASSEMBLY
1	12	153-1209	BUTTON GUARD
1	13	153-6437	PUSH BUTTON MOUNTING PLATE
1	14	153-0047A	DUSTER CLOTH - DBA BLUE (8460)
1	15	153-8311	MOMENTARY WHEEL ASSEMBLY (URETHANE)
1	16	153-6029	MOMENTARY WHEEL HOUSING
1	17	153-7013	URETHANE-BLEND LANE DRIVE WHEEL (FOUR-INCH TREADED)
1	18	154-8616	BUFFER MOTOR ASSEMBLY (DC)
1	19	153-0001	TRANSPORT CASTER (3" DUAL WHEEL)
1	20	154-8683	POLYETHYLENE RECOVERY TANK ASSEMBLY (2002)
1	21	154-0251	KEYBOARD DECAL - SANCTION TECHNOLOGY
1	22	153-0204B	VACUUM MOTOR BRUSHES - 115V
1	22	153-0204C	VACUUM MOTOR BRUSHES - 230V
1	23	153-0204H	VACUUM MOTOR HOUSING
1	24	154-1809B	DRIVE MOTOR BRUSHES
1	25	153-8624	PUSH BUTTON REPLACEMENT HARNESS

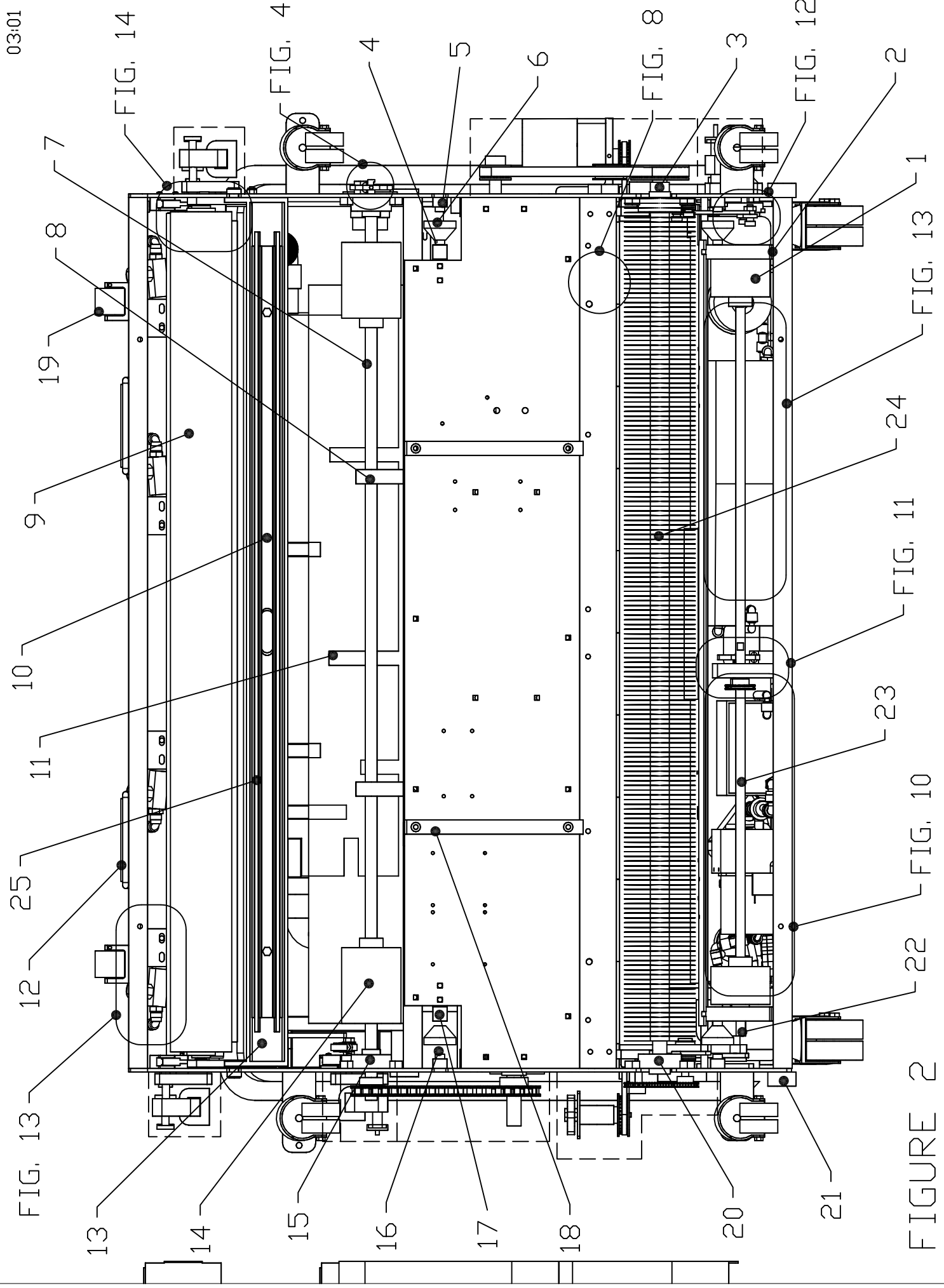


FIGURE 2

FIGURE NUMBER	INDEX NUMBER	PART NUMBER	PART NAME & DESCRIPTION
FIGURE 2 PART NUMBERS			
2	1	153-7002AA	LANE DISTANCE COUNTER WHEEL-TREADED (2 INCH)
2	2	154-8619	PILLOWBLOCK - LANE DISTANCE SHAFT (LEFT-FLANGED)
2	3	154-6664	BUFFER BRUSH PULLEY SPACER
2	4	153-9803	FLANGED BUSHING (3/8 X 1/2 X 1/4)
2	5	154-6652	GUIDE ROLLER MOUNT BLOCK
2	6	153-8410	LANE EDGE GUIDE ROLLER W/BUSHING ASSEMBLY (1/2" BORE)
2	7	154-6644	MAIN DRIVE SHAFT
2	8	154-8803	DRIVE SHAFT PILLOWBLOCK
2	9	153-8838	CUSHION ROLLER ASSEMBLY WITH STEMS (STEEL CORE = 44-3/8")
2	10	153-0202	COMPLETE SQUEEGEE ASSEMBLY (2-PIECE BLUE)
2	11	154-8804	MAIN DRIVE SHAFT GUARD ASSEMBLY
2	12	154-0810	LIFTING HANDLE (SS SPRING-LOADED CHEST)
2	13	154-6339-1525	SQUEEGEE MOUNT ANGLE ASSEMBLY
2	14	153-7013	URETHANE-BLEND LANE DRIVE WHEEL (FOUR-INCH TREADED)
2	15	154-9603	5/8" FLANGED BEARING (DRIVE SHAFT)
2	16	153-2401	SPRING - 0.54 OD X 0.75 (GUIDE ROLLER)
2	17	154-6651	FRONT GUIDE ROLLER MOUNT
2	18	154-6833	SKID GUIDES
2	19	153-8311	MOMENTARY WHEEL ASSEMBLY (URETHANE)
2	20	154-8640	FLANGED BEARING FOR BUFFER BRUSH (3/4" ROTATED)
2	21	154-6042	UHMW WHEEL - CORNER GUARD
2	22	154-8206	TRANSFER ROLLER MOTOR - 25 RPM (115V)
2	22	154-8206A	TRANSFER ROLLER MOTOR - 25 RPM (230V)
2	23	154-6821	LANE DISTANCE SHAFT
2	24	154-8641	BUFFER BRUSH ASSEMBLY
2	25	153-0202B	REPLACEMENT SQUEEGEE BLADE - BLUE STOCK (42")

10:01

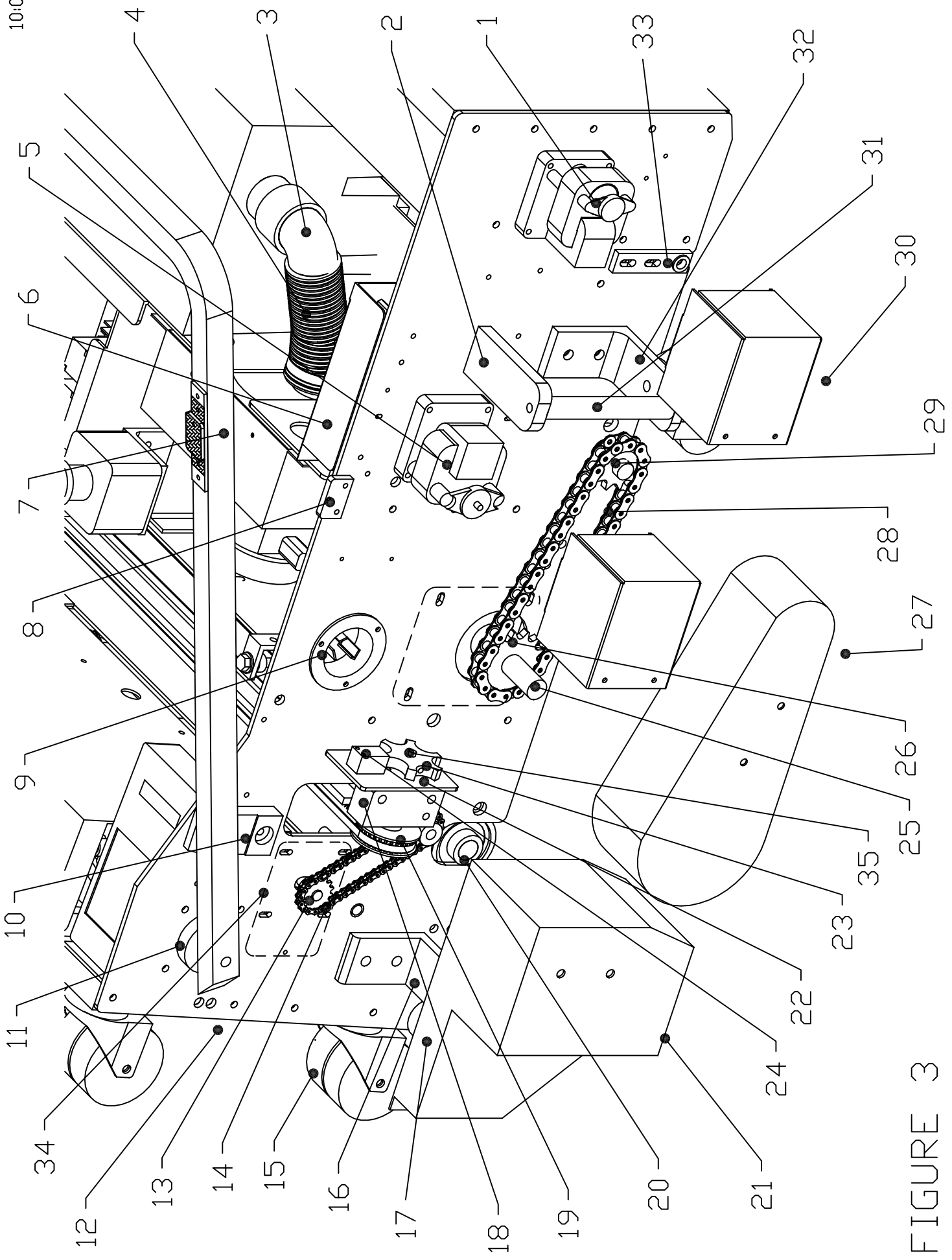


FIGURE 3

FIGURE NUMBER	INDEX NUMBER	PART NUMBER	PART NAME & DESCRIPTION
FIGURE 3 PART NUMBERS			
3	1	153-8403	BRAKE MOTOR ASSEMBLY (7 RPM-115 VOLT)
3	1	153-8803H	BRAKE MOTOR ASSEMBLY (7 RPM-230V 50 Hz)
3	2	154-6629	SIDE LIFT HANDLE MOUNT
3	3	153-8827T	1-1/4 PVC ELBOW FOR RECOVERY TANK INLET (NO THREADS)
3	4	154-0260	FLEXIBLE HOSE STOCK FOR VACUUM (1-1/2" ID) (6-1/8" LENGTH)
3	5	153-8207	BRAKE MOTOR ASSEMBLY (25 RPM-115 VOLT)
3	5	153-8807H	BRAKE MOTOR ASSEMBLY (25 RPM-230V 50 Hz)
3	6	154-8607	GUARD FOR SQUEEGEE & DUSTER SWITCH (WITH FELT)
3	7	154-8623	LANE TO LANE HANDLE ASSEMBLY
3	8	154-6698	LID MOUNT PLATE
3	9	153-1823	FLANGED TWISTLOCK INLET - 125V/20A
3	9	153-1826	FLANGED TWISTLOCK INLET - 250V/20A
3	10	154-6041	UHMW HANDLE STOP
3	11	153-6851	UHMW HANDLE SPACER
3	12	153-2818	HHCS - 3/8-16 X 2-1/2 (GRADE 8)
3	13	153-9010	SPROCKET - 25B15 (TRANSFER DRIVE & LDS - 3/8")
3	14	154-9602	TRANSFER DRIVE CHAIN (25P51)
3	15	153-0001	TRANSPORT CASTER (3" DUAL WHEEL)
3	16	154-6221	MOUNTING ANGLE - HEAVY DUTY CASTER (3 x 3.625)
3	17	154-6042	UHMW WHEEL - CORNER GUARD
3	18	154-8643	HEAD IDLER PULLEY MOUNT
3	19	154-9204	PULLEY - HEAD IDLER (32XL-1/4" BORE-W/SET)
3	20	154-8640	FLANGED BEARING FOR BUFFER BRUSH (3/4" ROTATED)
3	21	154-6680	HEAD SENSOR GUARD
3	22	154-6829	MOUNTING PLATE - HEAD TIMING SENSORS
3	23	154-6831	6-TOOTH SENSOR DISK - ALUMINUM
3	24	154-1220	INDUCTIVE PROXIMITY SENSOR (TL-Q5MC1)
3	25	154-8365	DRIVE MOTOR ASSEMBLY (BALDOR)
3	26	153-9002	SPROCKET - 40B13 (5/8" BORE)
3	27	154-6681	DRIVE CHAIN GUARD
3	28	154-9601	PRIMARY DRIVE CHAIN (40P41)
3	29	153-9003	SPROCKET - 40B10 X 3/4" BORE
3	20	153-6412	DUSTER MOTOR SHIELD (7 RPM)
3	31	154-6627	SIDE LIFT HANDLE
3	32	154-6628	CASTER/HANDLE MOUNT ANGLE
3	33	154-8802	SQUEEGEE ADJUSTMENT ARM - RIGHT
3	34	154-8206	TRANSFER ROLLER MOTOR - 25 RPM (115V)
3	34	154-8206A	TRANSFER ROLLER MOTOR - 25 RPM (230V)
3	35	154-6665	HEAD TIMING SHAFT

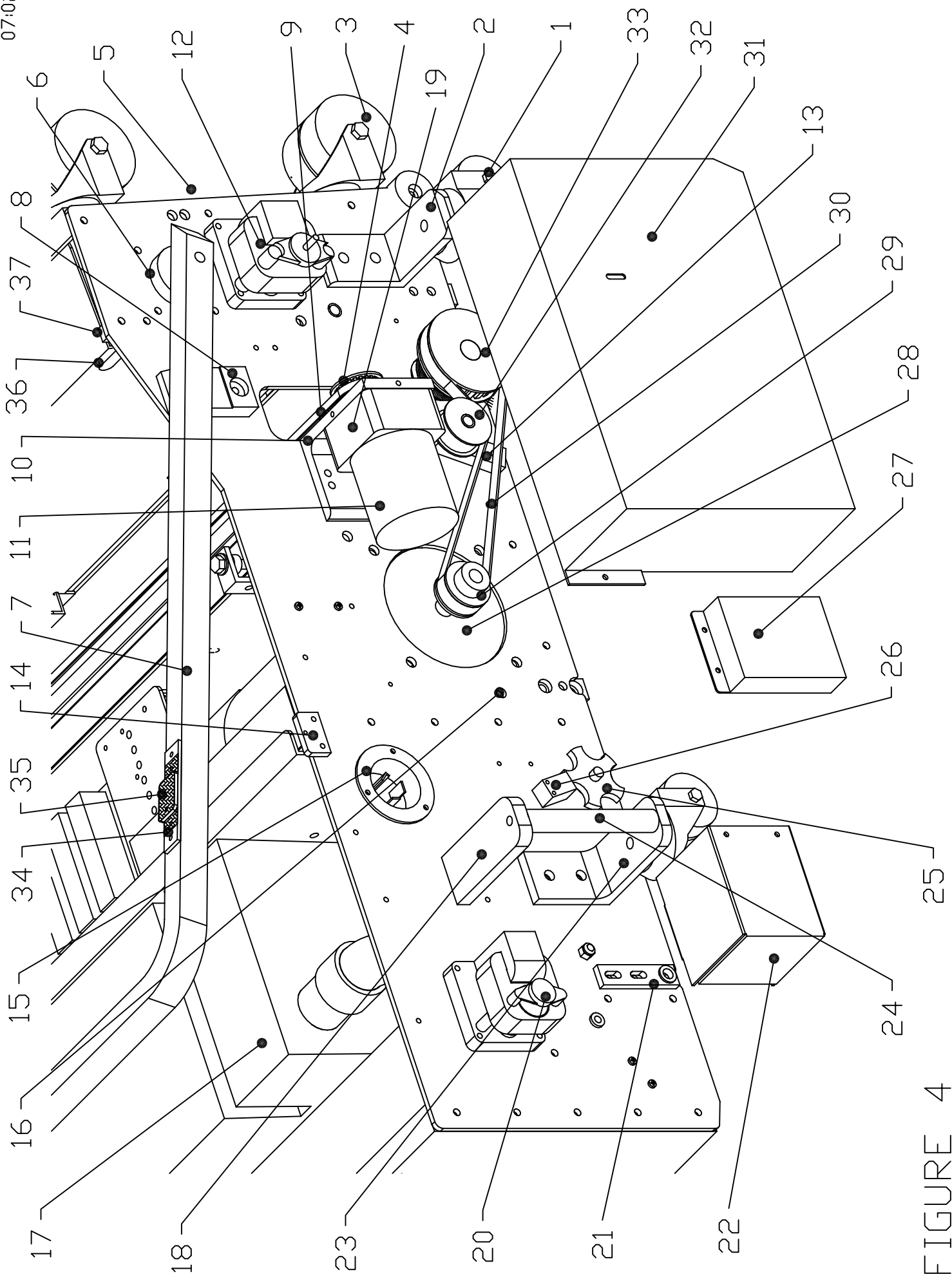


FIGURE 4

FIGURE NUMBER	INDEX NUMBER	PART NUMBER	PART NAME & DESCRIPTION
FIGURE 4 PART NUMBERS			
4	1	153-0812	TRANSPORT CASTER - HEAVY DUTY (2" DUAL WHEEL - 361A) 3/8" BORE
4	2	154-6221	MOUNTING ANGLE - HEAVY DUTY CASTER (3 x 3.625)
4	3	153-0001	TRANSPORT CASTER (3" DUAL WHEEL)
4	4	154-9205D	PULLEY - HEAD DRIVE MOTOR (24XL 3/8" BORE W/DOUBLE SET) 60 Hz
4	4	154-9205B	PULLEY - HEAD DRIVE MOTOR (28XL 3/8" BORE W/DOUBLE SET) 50 Hz
4	5	153-2818	HHCS - 3/8-16 X 2-1/2 (GRADE 8)
4	6	153-6851	UHMW HANDLE SPACER
4	7	154-8623	LANE TO LANE HANDLE ASSEMBLY
4	8	154-6041	UHMW HANDLE STOP
4	9	154-9201	BELT FOR HEAD DRIVE (XL025 - 9 FEET)
4	10	154-6222	MOUNTING ANGLE - HEAD DRIVE MOTOR
4	11	154-8232	HEAD DRIVE MOTOR ASSEMBLY - 115V (NO GEARBOX)
4	11	154-8632	HEAD DRIVE MOTOR ASSEMBLY - 230V STD (NO GEARBOX)
4	12	153-8207	BRAKE MOTOR ASSEMBLY (25 RPM-115 VOLT)
4	12	153-8807H	BRAKE MOTOR ASSEMBLY (25 RPM-230V 50 Hz)
4	13	154-6841	BUFFER IDLER MOUNTING BAR
4	14	154-6698	LID MOUNT PLATE
4	15	153-1823	FEMALE TWISTLOCK - 250V/20A
4	15	153-1826	FEMALE TWISTLOCK - 125V/20A
4	16	153-2402	3/8 RUBBER GROMMET
4	17	154-8683	POLYETHYLENE RECOVERY TANK ASSEMBLY (2002)
4	18	154-6629	SIDE LIFT HANDLE MOUNT
4	19	154-1206	GEAR BOX FOR HEAD DRIVE MOTOR
4	20	153-8403	BRAKE MOTOR ASSEMBLY (7 RPM-115 VOLT)
4	20	153-8803H	BRAKE MOTOR ASSEMBLY (7 RPM-230V 50 Hz)
4	21	154-8801	SQUEEGEE ADJUSTMENT ARM - LEFT
4	22	153-6412	DUSTER MOTOR SHIELD (7 RPM)
4	23	154-6628	CASTER/HANDLE MOUNT ANGLE
4	24	154-6627	SIDE LIFT HANDLE
4	25	154-6717	5-TOOTH SENSOR DISK - ALUMINUM (3/8 BORE)
4	26	154-1220	INDUCTIVE PROXIMITY SENSOR (TL-Q5MC1)
4	27	154-6715	TACH SENSOR GUARD
4	28	154-8616A	BUFFER MOTOR ASSEMBLY (115V)
4	28	154-8616E	BUFFER MOTOR ASSEMBLY (230V)
4	29	154-9613	BUFFER MOTOR PULLEY (12L050-5/8") (DC)
4	30	154-9615	T-BELT 255L050 (BUFFER MOTOR)
4	31	154-6679	BUFFER/HEAD DRIVE GUARD
4	32	154-8839	BUFFER IDLER ASSEMBLY
4	33	153-9014	BUFFER PULLEY (24LO50-3/4")
4	34	154-8622	KILL PLATE ASSEMBLY FOR HANDLE
4	35	154-8629K	KILL PLATE ASSEMBLY FOR POWER CORD (ATTACHED TO CORD)
4	36	154-6357	LATCH FOR SPLASH GUARD
4	37	154-6356	MOUNT BLOCK FOR LATCH

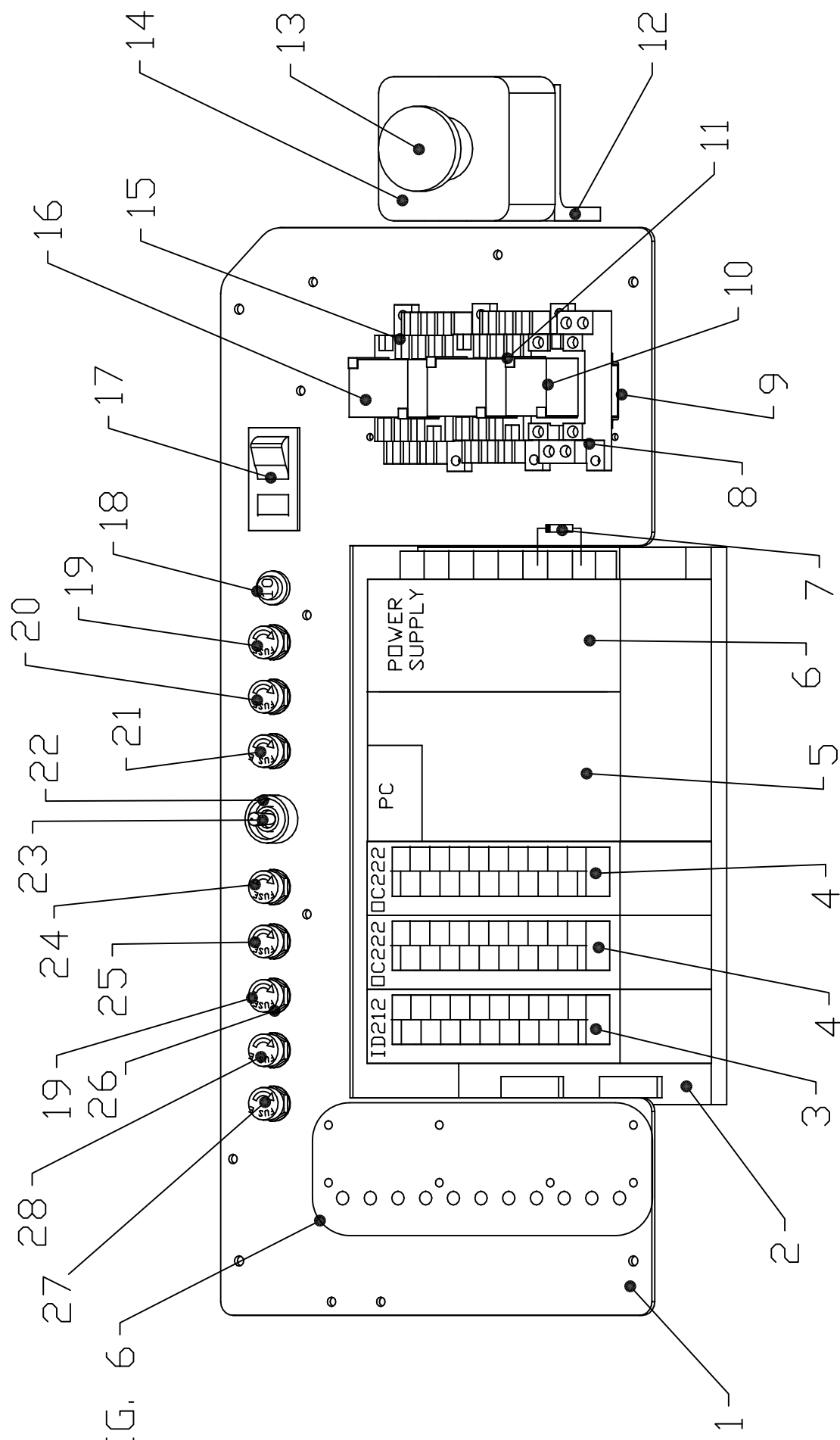
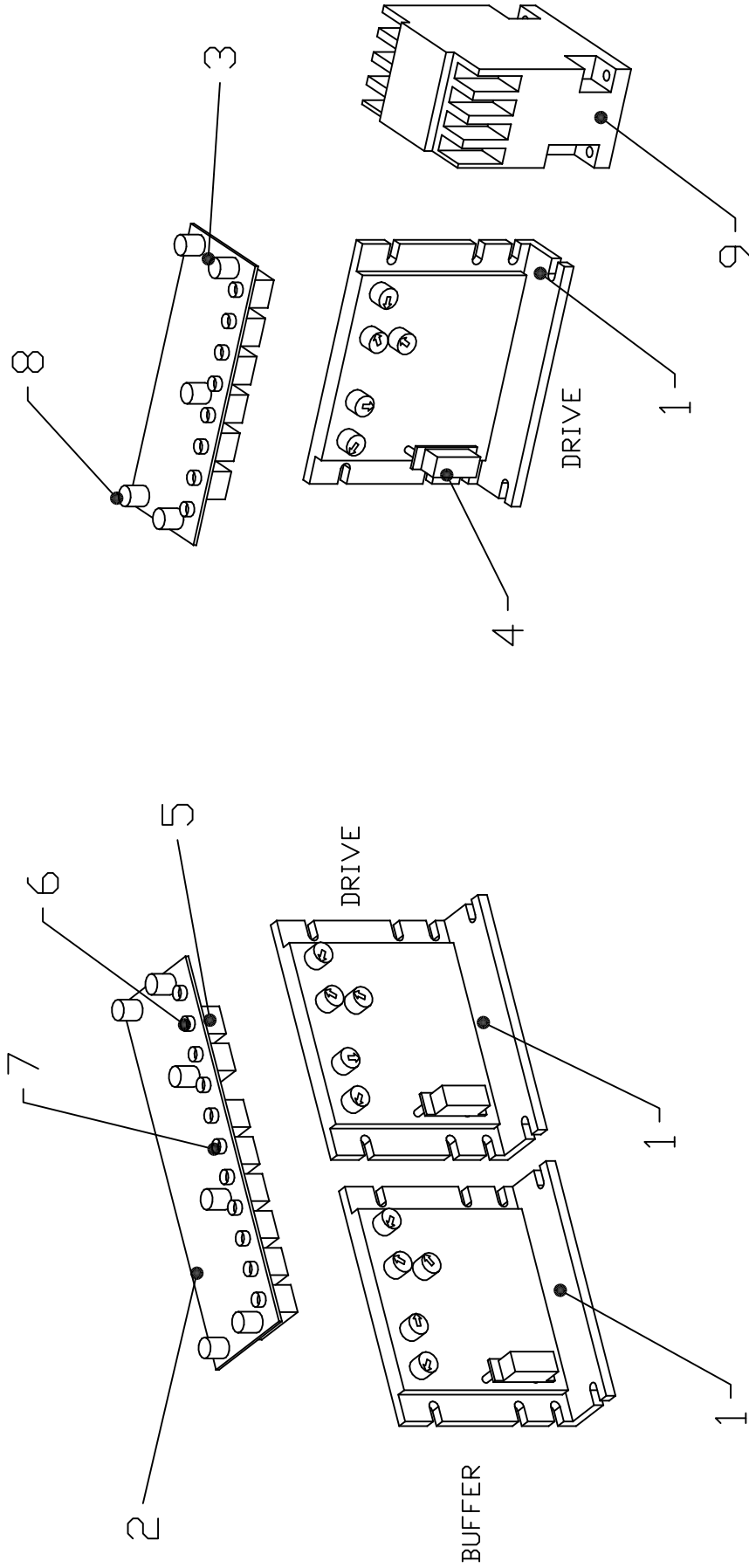


FIGURE 5

FIGURE NUMBER	INDEX NUMBER	PART NUMBER	PART NAME & DESCRIPTION
FIGURE 5 PART NUMBERS			
5	1	154-6324-1525	PC_RELAY MOUNTING PLATE - (PAINTED)
5	2	154-1201B	PC MOUNTING RACK (C200HW 3-SLOT)
5	3	153-1816	INPUT MODULE - ID212
5	4	154-8231	OUTPUT MODULE - OC222
5	5	154-1201	MICROPROCESSOR - C200HG (CPU-33-E)
5	6	154-1201P	POWER SUPPLY FOR C200HW (24VDC)
5	7	153-1404	SILICON RECTIFIER DIODE
5	8	153-1017	LY2 RELAY BASE
5	9	153-1809D	DIN RAIL (4-3/8")
5	10	153-1016	LY2 RELAY (115 VOLT)
5	10	153-1616	LY2 RELAY (230 VOLT)
5	11	153-1020	RELAY CLAMPS (PAIR)
5	12	154-6273	MOUNTING ANGLE FOR E-STOP
5	13	154-1250	EMERGENCY STOP CIRCUIT BREAKER ASSEMBLY
5	14	154-1251	CIRCUIT BREAKER FOR E-STOP BUTTON (10A NC)
5	15	153-1019	LY3 RELAY BASE
5	16	153-1018	LY3 RELAY (115 VOLT)
5	16	153-1618	LY3 RELAY (230 VOLT)
5	17	154-1610	CIRCUIT BREAKER - DPST (15A) - 115V
5	17	154-1272	CIRCUIT BREAKER - DPST (10A) - 230V
5	18	153-1030	CIRCUIT BREAKER - SPST (10 AMP) - 115V
5	18	153-1810	CIRCUIT BREAKER - SPST (8 AMP) - 230V
5	19	154-1262	FUSE - TIME DELAY (0.75A MDL) UL - 115V
5	19	154-1260E	FUSE - TIME DELAY (GDC-315mA) IEC - 230V
5	20	154-1266	FUSE - TIME DELAY (2.25A MDL) UL - 115V
5	20	154-1264E	FUSE - TIME DELAY (GDC-1A) IEC - 230V
5	21	154-1268C	FUSE - TIME DELAY (4A ABC) UL - CERAMIC - 115V
5	21	154-1267E	FUSE - TIME DELAY (GDC-4A) IEC - CERAMIC - 230V
5	22	153-1209	BUTTON GUARD
5	23	153-1009	TOGGLE SWITCH
5	24	154-1270	FUSE - TIME DELAY (7.5A MDL) UL - 115V
5	24	154-1269E	FUSE - TIME DELAY (6.3A GDC) UL - 230V
5	25	154-1270C	FUSE - TIME DELAY (MDA-8A) UL - CERAMIC - 115V
5	25	154-1269C	FUSE - TIME DELAY (GDC-6.3A) IEC - CERAMIC - 230V
5	26	153-1028	PANEL-MOUNT FUSE HOLDER - UL (COMPLETE) - 115V
5	26	153-1028E	PANEL-MOUNT FUSE HOLDER - IEC (COMPLETE) - 230V
5	27	154-1269C	FUSE - TIME DELAY (6.3A GDC) UL - 230V
5	28	154-1267E	FUSE - TIME DELAY (GDC-4A) IEC - CERAMIC - 230V

FIGURE 6



DRIVE SPEED CONTROL
AND CIRCUIT BOARD
ASSY WITH VARIABLE
BUFFER SPEED CONTROL

DRIVE SPEED CONTROL
AND CIRCUIT BOARD
ASSY W/ BUFFER
CONTACTOR

FIGURE NUMBER	INDEX NUMBER	PART NUMBER	PART NAME & DESCRIPTION
FIGURE 6 PART NUMBERS			
6	1	153-1012	SPEED CONTROL FOR DC MOTOR (KBIC-120) INCLUDES RESISTOR
6	1	153-1812	SPEED CONTROL FOR DC MOTOR (KBIC-240) INCLUDES RESISTOR
6	2	154-8210	CIRCUIT BOARD ASSEMBLY (DRIVE SPEEDS) 115V
6	2	154-8211	CIRCUIT BOARD ASSEMBLY (DRIVE SPEEDS) 230V
6	3	153-1015	HORSEPOWER RESISTOR (1/4 HP 0.5 OHM)
6	4	154-1217	RELAY FOR SPEED CONTROL (SOLDER TERMINALS) 120V
6	4	154-1217A	RELAY FOR SPEED CONTROL (SOLDER TERMINALS) 240V
6	5	154-1218	TRIMPOT FOR CIRCUIT BOARD (BOURNS #3309P - 1K)
6	6	154-1219	TRIMPOT FOR CIRCUIT BOARD (BOURNS #3309P - 2K)
6	7	153-2509	CIRCUIT BOARD MOUNT
6	8	153-1004	BUFFER MOTOR CONTACTOR - (115V).
6	8	153-1604	BUFFER MOTOR CONTACTOR - (230V)

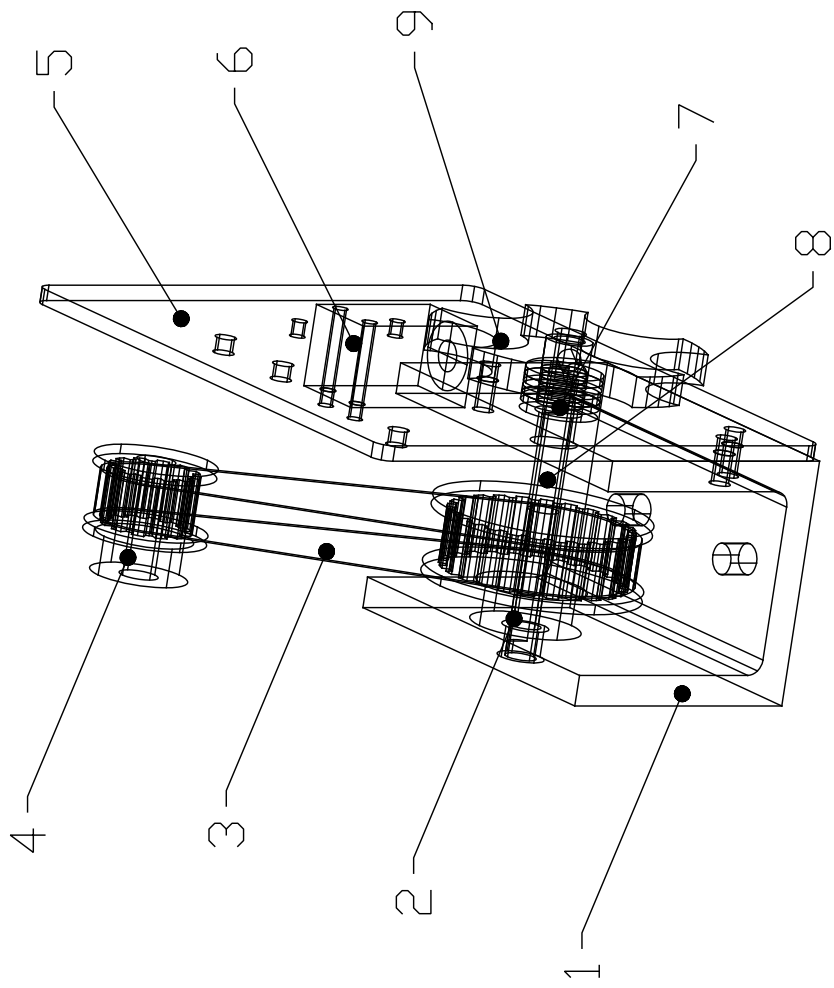


FIGURE 7

FIGURE NUMBER	INDEX NUMBER	PART NUMBER	PART NAME & DESCRIPTION
FIGURE 7 PART NUMBERS			
7	1	154-8642	BUFFER TACH PULLEY MOUNT
7	2	154-9207	PULLEY - (24XL 1/4" BORE W/SET)
7	2	154-9214	PULLEY - (30XL 1/4" BORE W/SET) 50 Hz
7	3	154-9618	BELT FOR BUFFER TACH (90XL037)
7	3	154-9203	BELT FOR BUFFER TACH (100XL037)
7	4	154-9208	PULLEY - (12XL-5/16" BORE W/SET SCREW)
7	5	154-6280	SENSOR PLATE
7	6	154-1220	PROXIMITY SENSOR
7	7	154-6716	5-TOOTH SENSOR DISK - ALUMINUM (1/4 BORE)
7	8	154-6282	SHAFT FOR BUFFER TACH & PULLEY
7	9	153-2510	NYLON WASHER - 1/4 (0.060)
7	10	154-8616	BUFFER MOTOR ASSEMBLY (DC) UPGRADE ONLY
7	11	154-9613	BUFFER MOTOR PULLEY (12L050-5/8") (DC)
7	12	153-1019	LY3 RELAY BASE
7	13	153-1020	RELAY CLAMPS (PAIR)
7	14	153-1018	LY3 RELAY (115 VOLT)
7	14	153-1618	LY3 RELAY (230 VOLT)
7	15	153-1012	SPEED CONTROL FOR DC MOTOR (KBIC-120) INCLUDES RESISTOR
7	15	153-1812	SPEED CONTROL FOR DC MOTOR (KBIC-240) INCLUDES RESISTOR
7	16	153-1015	HORSEPOWER RESISTOR (1/4 HP 0.5 OHM)
7	17	154-1217	RELAY FOR SPEED CONTROL (SOLDER TERMINALS) 120V
7	17	154-1217A	RELAY FOR SPEED CONTROL (SOLDER TERMINALS) 240V
7	18	153-2509	CIRCUIT BOARD MOUNT
7	19	154-1219	TRIMPOT FOR CIRCUIT BOARD (BOURNS #3309P - 2K)
7	20	154-8310	CIRCUIT BOARD ASSEMBLY (VB DRIVE & BUFFER SPEEDS) 115V
7	20	154-8311	CIRCUIT BOARD ASSEMBLY (VB DRIVE & BUFFER SPEEDS) 230V
7	21	154-1218	TRIMPOT FOR CIRCUIT BOARD (BOURNS #3309P - 1K)

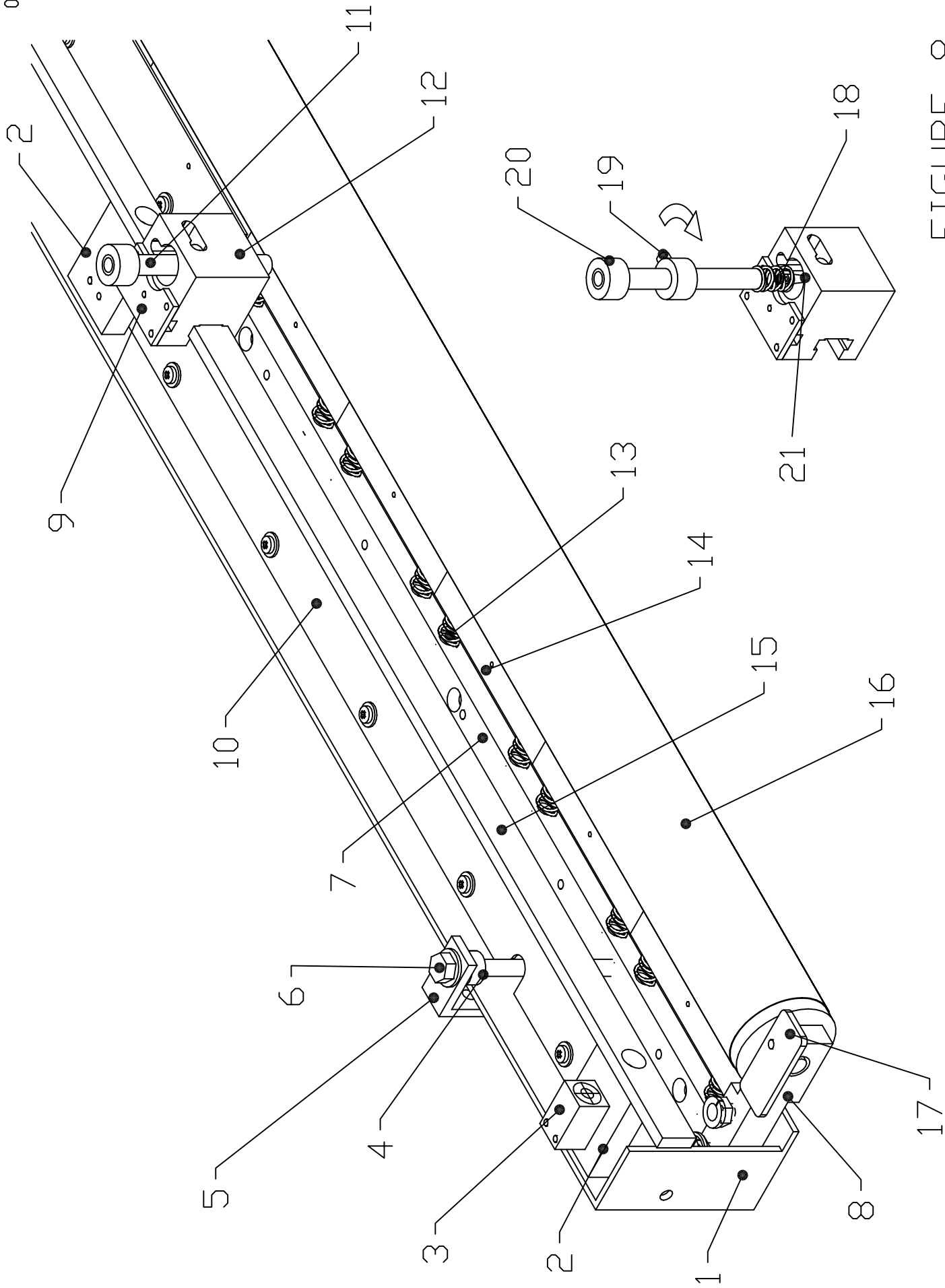


FIGURE 8

FIGURE NUMBER	INDEX NUMBER	PART NUMBER	PART NAME & DESCRIPTION
FIGURE 8 PART NUMBERS			
8	1	154-6823	SMOOTHER MOUNTING ANGLE
8	2	154-6825	HEAD MOUNT BAR (NYLON)
8	3	154-1220	INDUCTIVE PROXIMITY SENSOR (TL-Q5MC1)
8	4	153-2704	STEEL COLLAR - 5/16 X 3/8
8	5	154-6626	TRANSFER ASSEMBLY ADJUSTMENT ANGLE
8	6	153-2737	HHCS - 5/16-18 X 4
8	7	154-6622	BRUSH PAD BASE BLOCK
8	8	154-8609	TRANSFER ROLLER MOUNTING ARM - LEFT
8	8	154-8610	TRANSFER ROLLER MOUNTING ARM - RIGHT (NOT SHOWN)
8	9	154-6646	HEAD BELT MOUNT PLATE
8	10	154-6815	BRUSH PAD TOP PLATE
8	11	154-6696	TIP AND HOSE HOLDER
8	12	154-6672A	SLIDING HEAD
8	13	153-2540A	SPRING FOR WIPING PAD (1-3/4")
8	14	154-8617	PATTERN SMOOTHING PAD ASSEMBLY
8	15	154-6647A	SLIDING HEAD BAR
8	16	154-8608	TRANSFER ROLLER ASSEMBLY
8	17	154-8627	FELT DRIP PAD - LEFT SIDE
8	17	154-8628	FELT DRIP PAD - RIGHT SIDE (NOT SHOWN)
8	18	153-2713	SPRING - OIL TIP RETAINER (STD)
8	19	153-2051	SET SCREW - 1/4-20 X 1/2
8	20	153-2804	COLLAR - 3/8 X 3/4 X 3/8
8	21	154-6832	OIL PENCIL TIP - ALUMINUM

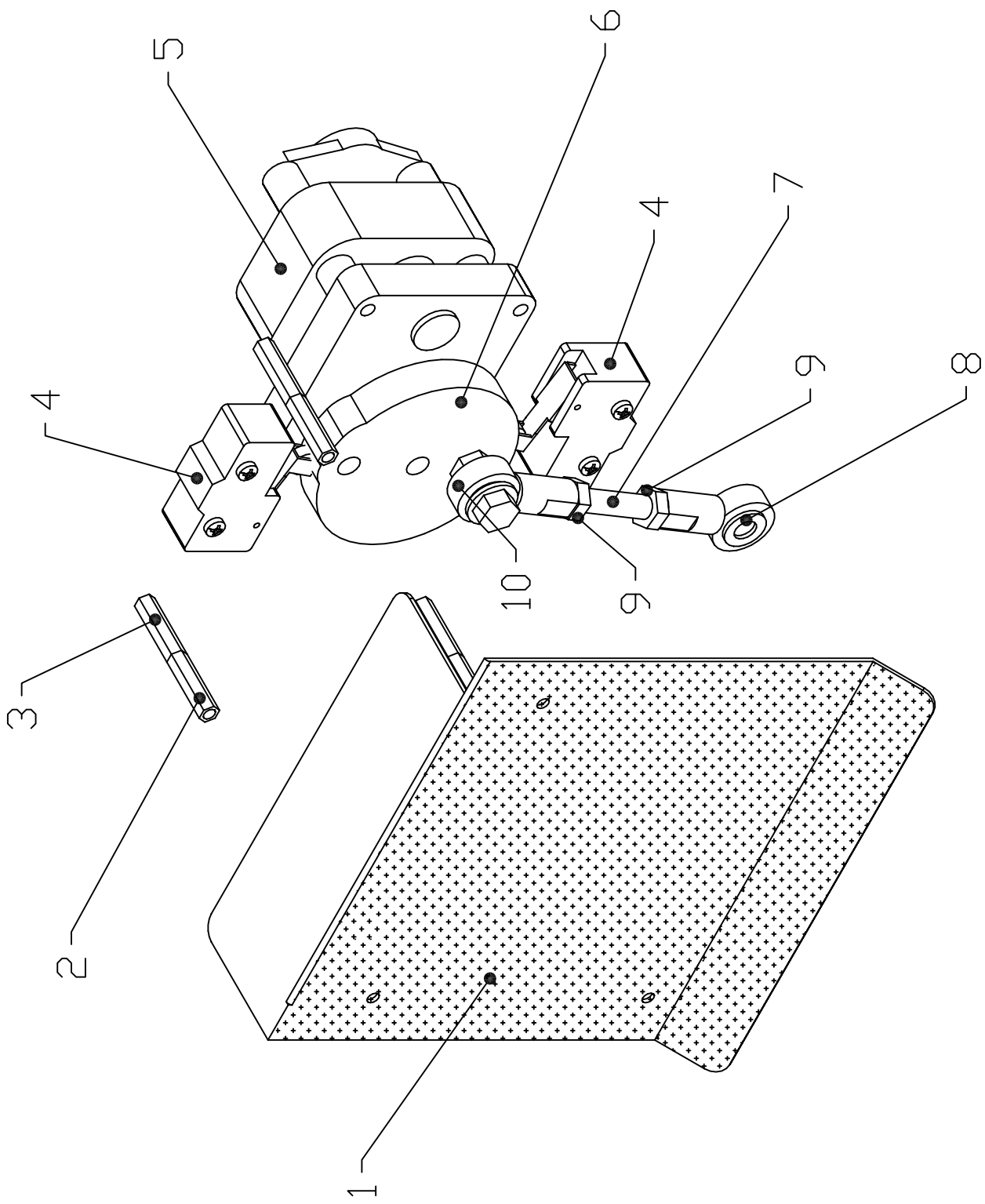


FIGURE 9

FIGURE NUMBER	INDEX NUMBER	PART NUMBER	PART NAME & DESCRIPTION
FIGURE 9 PART NUMBERS			
9	1	154-8607	GUARD FOR SQUEEGEE & DUSTER SWITCH (WITH FELT)
9	2	153-2530	STANDOFF FASTENER - 8-32 X 1 (MALE/FEMALE) STEEL
9	3	153-2532	STANDOFF FASTENER - 8-32 X 1 (FEMALE/FEMALE) ALUMINUM
9	4	154-1015	MICROSWITCH WITH ROLLER
9	5	153-8207	BRAKE MOTOR ASSEMBLY (25 RPM-115 VOLT)
9	5	153-8807H	BRAKE MOTOR ASSEMBLY (25 RPM-230V 50 Hz)
9	6	154-6670	SQUEEGEE CAM
9	7	154-8646	5/16-24 X 3 ALLTHREAD (SQUEEGEE PIVOT)
9	8	153-0211	SQUEEGEE ROD END WITH FITTING (ON SQUEEGEE ASSY.)
9	9	153-2214	JAM NUT - 5/16-24
9	10	153-0211	SQUEEGEE ROD END WITH FITTING (ON MOTOR)

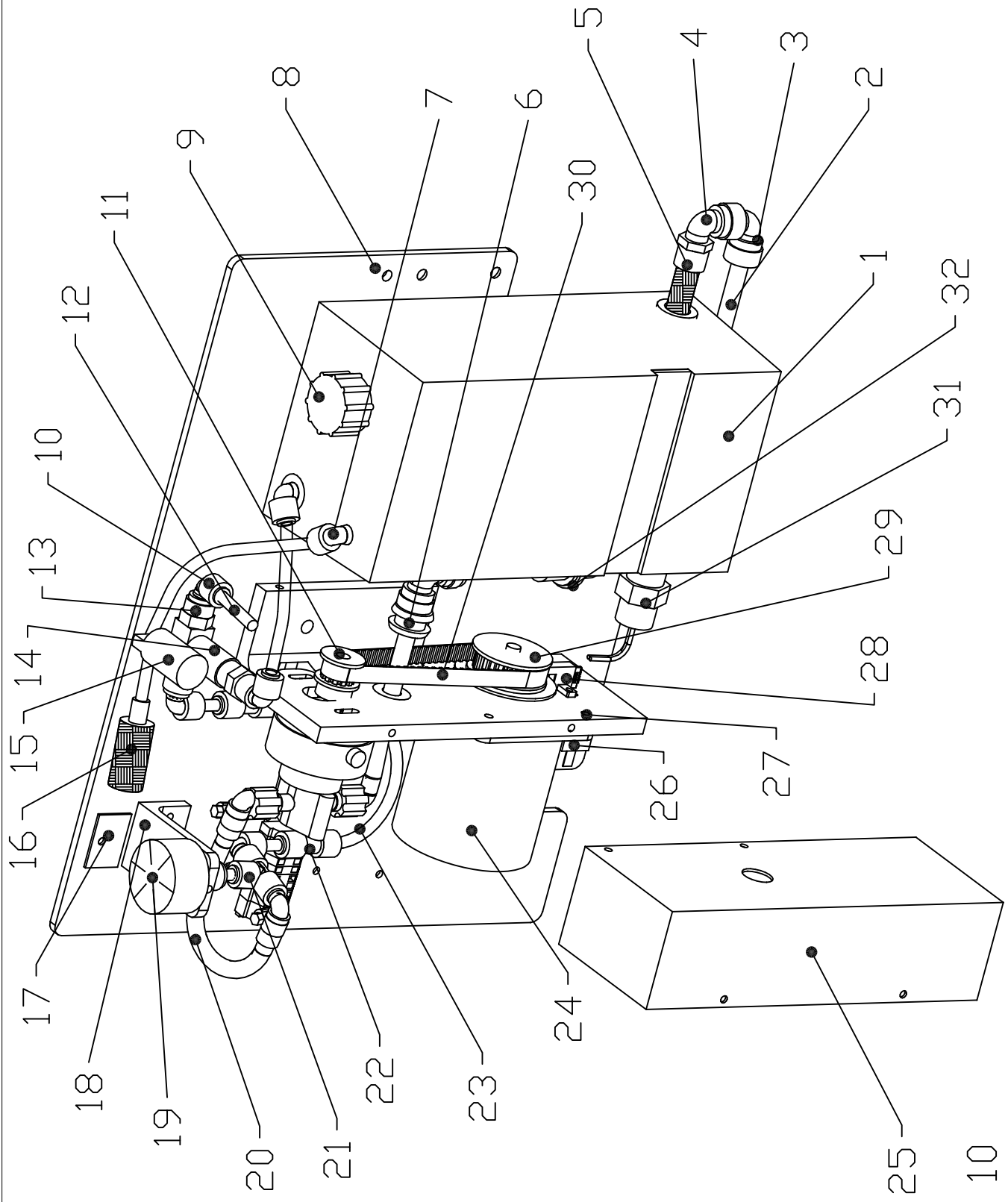


FIGURE 10

FIGURE NUMBER	INDEX NUMBER	PART NUMBER	PART NAME & DESCRIPTION
FIGURE 10 PART NUMBERS			
10	1	154-6725	CONDITIONER TANK (NO FITTINGS)
10	1	154-8682	CONDITIONER TANK (COMPLETE)
10	2	154-0202	PUMP TUBING STOCK (BEV-A-LINE #V) 3/8" OD x 1/4" ID (INTAKE)
10	3	154-0256	ELBOW - 3/8 TUBE X 3/8 TUBE
10	4	154-0225	ELBOW - 3/8 TUBE OD X 1/4 NPT
10	5	154-0212	TANK FILTER (5" SS) FOR OIL TANK
10	6	154-0218	GROMMET - 7/16 X 11/16 (1/4" PANEL)
10	7	154-0223	ELBOW (90 DEGREE) - 1/4 NPT x 1/4" TUBE
10	8	154-6694B	OIL ASSEMBLY MOUNT PLATE
10	9	154-0832	GARDEN HOSE FITTING CAP W/ GASKET
10	10	154-0222	ELBOW - 1/4" STEM x 1/4" TUBING OD
10	11	154-9208	PULLEY - METERING PUMP (12XL-5/16" BORE W/SET SCREW)
10	12	154-0202A	PENCIL TUBING STOCK (BEV-A-LINE #V) 1/4" OD x 1/8" ID
10	13	154-0224	MALE CONNECTOR - 1/4" TUBE X 1/8 NPT
10	14	154-1209	VALVE FOR OIL CONTROL - 24V DC 3-WAY (1/8" NPT)
10	15	154-1601	VALVE FOR TANK VENT - 24V DC 2-WAY (1/8" BARB)
10	16	154-8246	FILTER ASSEMBLY FOR VENT VALVE
10	17	154-0609	MAGNETIC CATCH FOR SPLASH GUARD
10	18	154-6653	PRESSURE GAUGE MOUNT ANGLE
10	19	154-1225	PRESSURE GAUGE (0-30 PSI) - 1-1/2 DIA
10	20	154-8660	PULSE SUPPRESSER TUBING KIT - PUMP TO METERING VALVE"
10	21	153-0815	UNION TEE (1/4 X 1/4 X 1/4 - QUICK DISCONNECT)
10	22	154-0248	REDUCING UNION CONNECTOR-1/4" X 3/16"
10	23	154-0202B	PENCIL TUBING STOCK (BEV-A-LINE #V) 3/16" OD x 1/16" ID
10	24	154-8604	MOTOR FOR METERING PUMP 115V (#4)
10	24	154-8604E	MOTOR FOR METERING PUMP 230V
10	25	154-6287	GUARD FOR PUMP & MOTOR
10	26	154-1208B	CAPACITOR FOR PUMP MOTOR - 1.5mF
10	27	154-6223A	MOUNTING ANGLE - PUMP & MOTOR
10	28	154-8239	SENSOR ACTUATOR & TIMING PULLEY ASSEMBLY (60Hz)
10	28	154-8239E	SENSOR ACTUATOR & TIMING PULLEY ASSEMBLY (50Hz)
10	29	154-9202A	BELT FOR METERING PUMP (130XL037) 115V
10	29	154-9215	BELT FOR METERING PUMP (140XL037) 230V
10	30	154-1617	FLOAT - HORIZONTAL MOUNT FOR FLUID LEVEL
10	31	154-8267	FILTER ASSEMBLY (IN-LINE) FOR OIL SUPPLY LINE

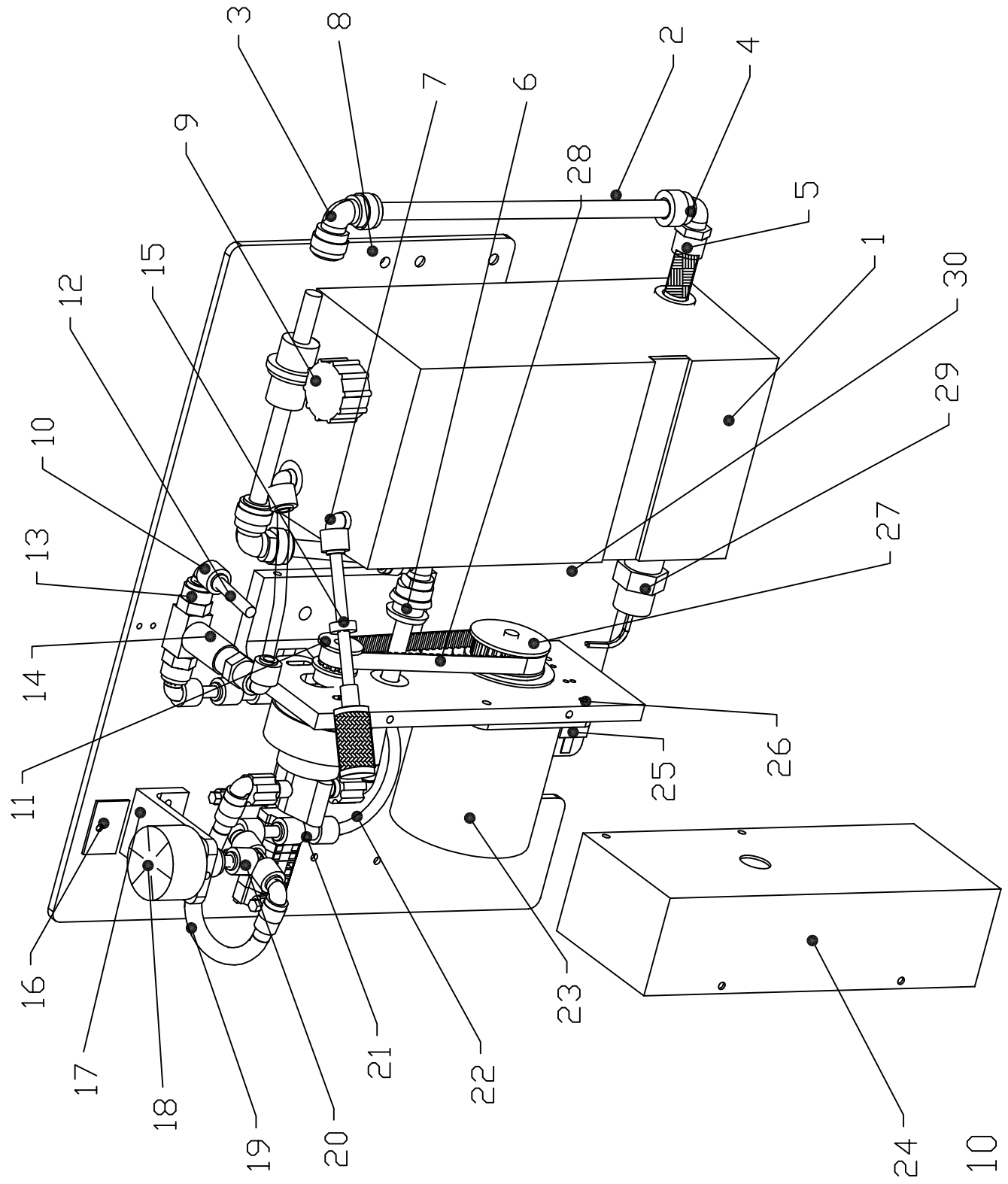


FIGURE 10

FIGURE NUMBER	INDEX NUMBER	PART NUMBER	PART NAME & DESCRIPTION
FIGURE 10 PART NUMBERS			
10	1	154-6725	CONDITIONER TANK (NO FITTINGS)
10	1	154-8682	CONDITIONER TANK (COMPLETE)
10	2	154-0202	PUMP TUBING STOCK (BEV-A-LINE #V) 3/8" OD x 1/4" ID (INTAKE)
10	3	154-0256	ELBOW - 3/8 TUBE X 3/8 TUBE
10	4	154-0225	ELBOW - 3/8 TUBE OD X 1/4 NPT
10	5	154-0212	TANK FILTER (5" SS) FOR OIL TANK
10	6	154-0218	GROMMET - 7/16 X 11/16 (1/4" PANEL)
10	7	154-0223	ELBOW (90 DEGREE) - 1/4 NPT x 1/4" TUBE
10	8	154-6694B	OIL ASSEMBLY MOUNT PLATE
10	9	154-0832	GARDEN HOSE FITTING CAP W/ GASKET
10	10	154-0222	ELBOW - 1/4" STEM x 1/4" TUBING OD
10	11	154-9208	PULLEY - METERING PUMP (12XL-5/16" BORE W/SET SCREW)
10	12	154-0202A	PENCIL TUBING STOCK (BEV-A-LINE #V) 1/4" OD x 1/8" ID
10	13	154-0224	MALE CONNECTOR - 1/4" TUBE X 1/8 NPT
10	14	154-1209	VALVE FOR OIL CONTROL - 24V DC 3-WAY (1/8" NPT)
10	15	154-8817	MANUAL VENT VALVE ASSEMBLY
10	16	154-0609	MAGNETIC CATCH FOR SPLASH GUARD
10	17	154-6653	PRESSURE GAUGE MOUNT ANGLE
10	18	154-1225	PRESSURE GAUGE (0-30 PSI) - 1-1/2 DIA
10	19	154-8660	PULSE SUPPRESSER TUBING KIT - PUMP TO METERING VALVE"
10	20	153-0815	UNION TEE (1/4 X 1/4 X 1/4 - QUICK DISCONNECT)
10	21	154-0248	REDUCING UNION CONNECTOR-1/4" X 3/16"
10	22	154-0202B	PENCIL TUBING STOCK (BEV-A-LINE #V) 3/16" OD x 1/16" ID
10	23	154-8604	MOTOR FOR METERING PUMP 115V (#4)
10	23	154-8604E	MOTOR FOR METERING PUMP 230V
10	24	154-6287	GUARD FOR PUMP & MOTOR
10	25	154-1208B	CAPACITOR FOR PUMP MOTOR - 1.5mF
10	26	154-6223A	MOUNTING ANGLE - PUMP & MOTOR
10	27	154-8239	SENSOR ACTUATOR & TIMING PULLEY ASSEMBLY (60Hz)
10	27	154-8239E	SENSOR ACTUATOR & TIMING PULLEY ASSEMBLY (50Hz)
10	28	154-9202A	BELT FOR METERING PUMP (130XL037) 115V
10	28	154-9215	BELT FOR METERING PUMP (140XL037) 230V
10	29	154-1617	FLOAT - HORIZONTAL MOUNT FOR FLUID LEVEL

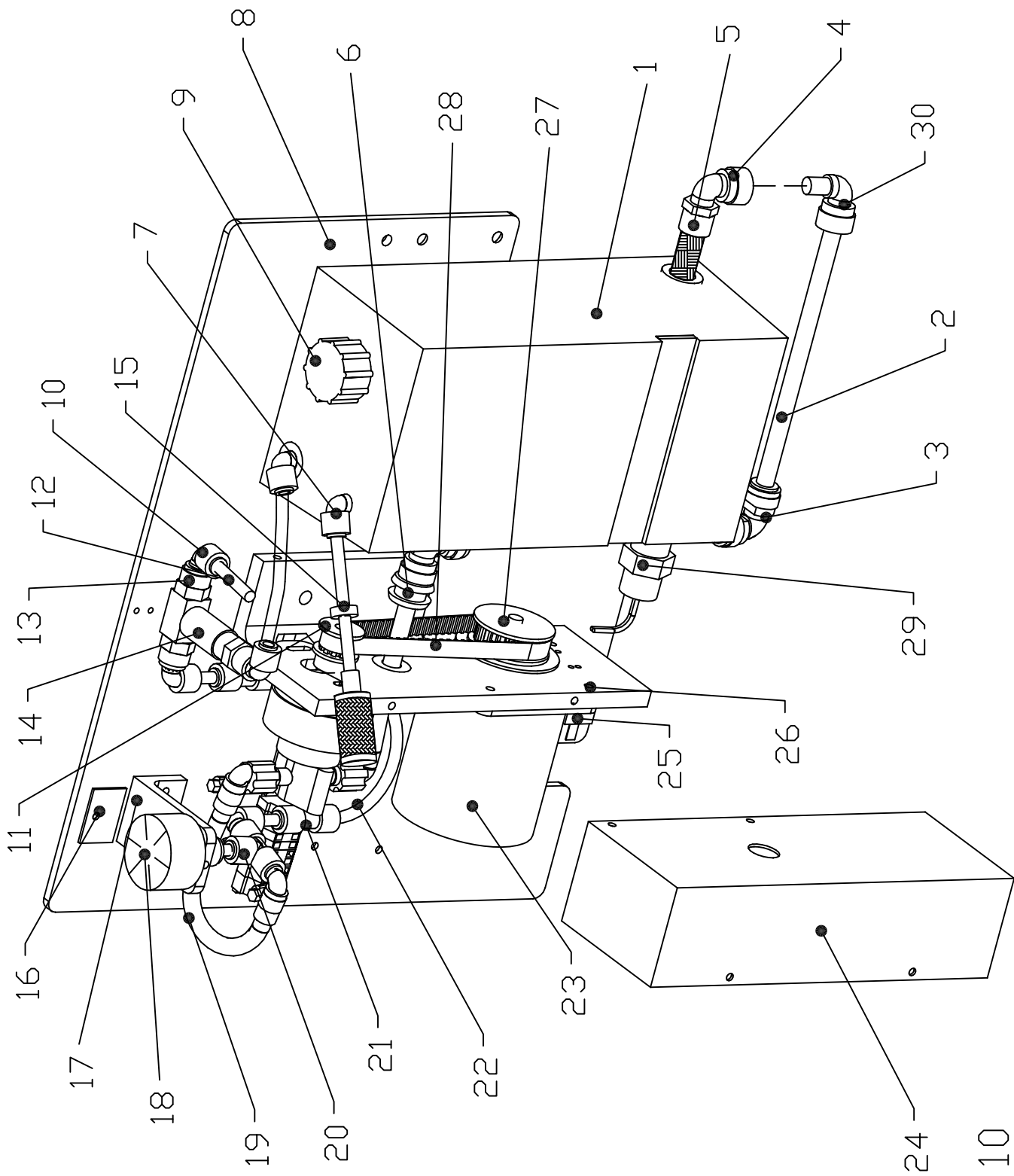


FIGURE 10

FIGURE NUMBER	INDEX NUMBER	PART NUMBER	PART NAME & DESCRIPTION
FIGURE 10 PART NUMBERS			
10	1	154-6725	CONDITIONER TANK (NO FITTINGS)
10	1	154-8682	CONDITIONER TANK (COMPLETE)
10	2	154-0202	PUMP TUBING STOCK (BEV-A-LINE #V) 3/8" OD x 1/4" ID (INTAKE)
10	3	154-0256	ELBOW - 3/8 TUBE X 3/8 TUBE
10	4	154-0225	ELBOW - 3/8 TUBE OD X 1/4 NPT
10	5	154-0212	TANK FILTER (5" SS) FOR OIL TANK
10	6	154-0218	GROMMET - 7/16 X 11/16 (1/4" PANEL)
10	7	154-0223	ELBOW (90 DEGREE) - 1/4 NPT x 1/4" TUBE
10	8	154-6694B	OIL ASSEMBLY MOUNT PLATE
10	9	154-0832	GARDEN HOSE FITTING CAP W/ GASKET
10	10	154-0222	ELBOW - 1/4" STEM x 1/4" TUBING OD
10	11	154-9208	PULLEY - METERING PUMP (12XL-5/16" BORE W/SET SCREW)
10	12	154-0202A	PENCIL TUBING STOCK (BEV-A-LINE #V) 1/4" OD x 1/8" ID
10	13	154-0224	MALE CONNECTOR - 1/4" TUBE X 1/8 NPT
10	14	154-1209	VALVE FOR OIL CONTROL - 24V DC 3-WAY (1/8" NPT)
10	15	154-8817	MANUAL VENT VALVE ASSEMBLY
10	16	154-0609	MAGNETIC CATCH FOR SPLASH GUARD
10	17	154-6653	PRESSURE GAUGE MOUNT ANGLE
10	18	154-1225	PRESSURE GAUGE (0-30 PSI) - 1-1/2 DIA
10	19	154-8660	PULSE SUPPRESSER TUBING KIT - PUMP TO METERING VALVE"
10	20	153-0815	UNION TEE (1/4 X 1/4 X 1/4 - QUICK DISCONNECT)
10	21	154-0248	REDUCING UNION CONNECTOR-1/4" X 3/16"
10	22	154-0202B	PENCIL TUBING STOCK (BEV-A-LINE #V) 3/16" OD x 1/16" ID
10	23	154-8604	MOTOR FOR METERING PUMP 115V (#4)
10	23	154-8604E	MOTOR FOR METERING PUMP 230V
10	24	154-6287	GUARD FOR PUMP & MOTOR
10	25	154-1208B	CAPACITOR FOR PUMP MOTOR - 1.5mF
10	26	154-6223A	MOUNTING ANGLE - PUMP & MOTOR
10	27	154-8239	SENSOR ACTUATOR & TIMING PULLEY ASSEMBLY (60Hz)
10	27	154-8239E	SENSOR ACTUATOR & TIMING PULLEY ASSEMBLY (50Hz)
10	28	154-9202A	BELT FOR METERING PUMP (130XL037) 115V
10	28	154-9215	BELT FOR METERING PUMP (140XL037) 230V
10	29	154-1617	FLOAT - HORIZONTAL MOUNT FOR FLUID LEVEL
10	30	154-0258	ELBOW - 3/8 STEM X 3/8 TUBE

RIGHT SIDE

LEFT SIDE

03:01

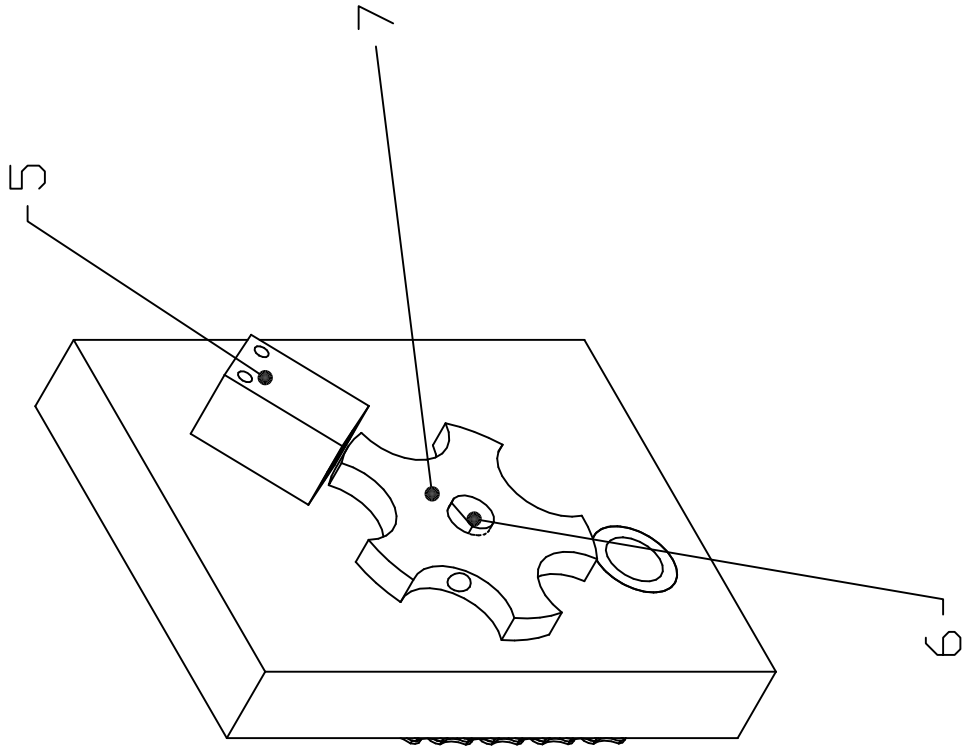
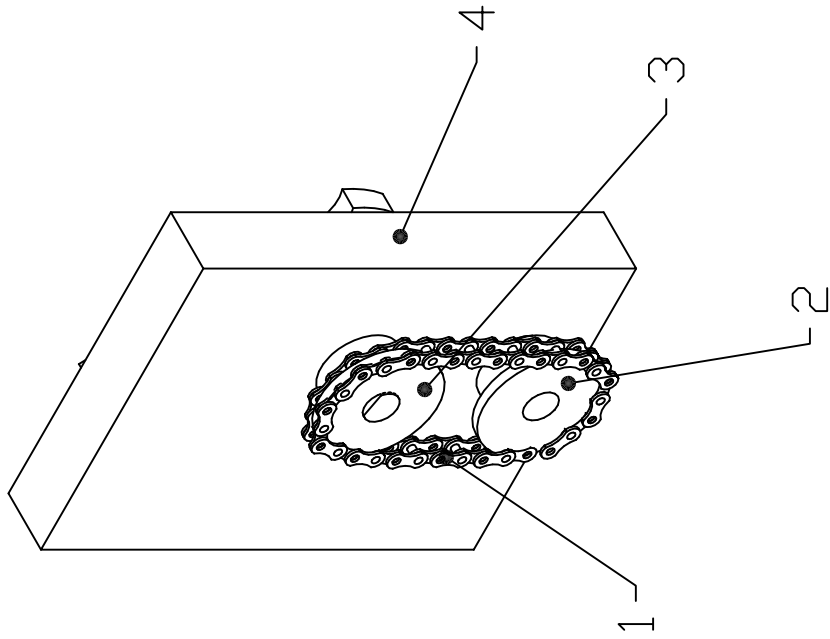


FIGURE 11

FIGURE NUMBER	INDEX NUMBER	PART NUMBER	PART NAME & DESCRIPTION
FIGURE 11 PART NUMBERS			
11	1	154-9211	LDS AND TACH SENSOR DRIVE CHAIN (25P29)
11	2	154-9213	SPROCKET - 25B15 (TACH AND LDS DRIVE 1/2" BORE)
11	3	153-9010	SPROCKET - 25B15 (TRANSFER DRIVE & LDS - 3/8")
11	4	154-8320	PILLOWBLOCK - LANE DISTANCE SHAFT (CENTER-PLAIN)
11	5	154-1220	PROXIMITY SENSOR
11	6	154-6264	SHAFT FOR TIMING DISK (REMOTE SENSOR)
11	7	154-6717	5-TOOTH ALUMINUM DISK (3/8 BORE)

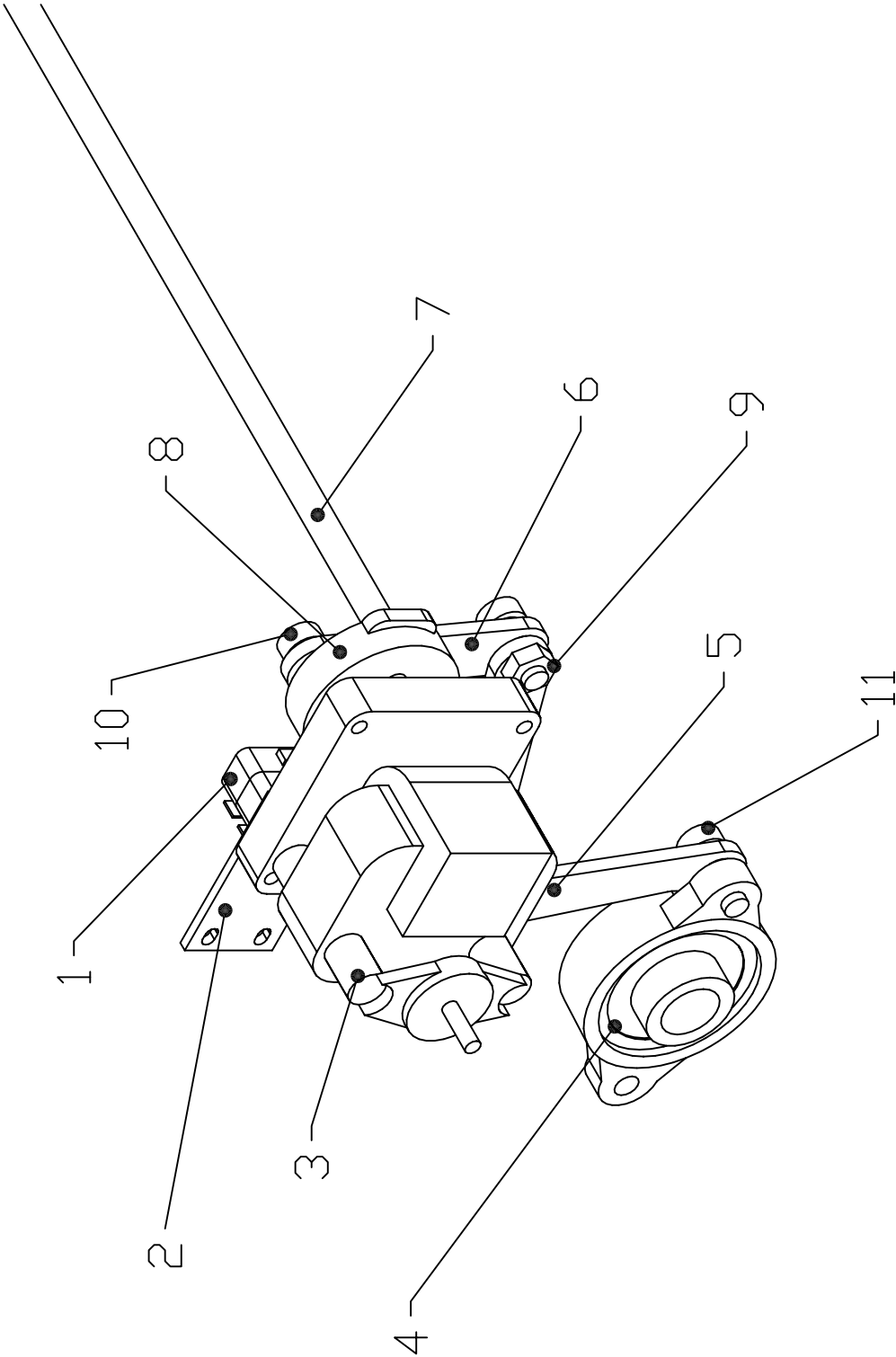


FIGURE 12

FIGURE NUMBER	INDEX NUMBER	PART NUMBER	PART NAME & DESCRIPTION
FIGURE 12 PART NUMBERS			
12	1	153-1203	MICROSWITCH-WITH ROLLER (SQUEEGEE/BRUSH)
12	2	154-6824	BRUSH CAM SWITCH PLATE
12	3	153-8207	BRAKE MOTOR ASSEMBLY (25 RPM-115 VOLT)
12	3	153-8807H	BRAKE MOTOR ASSEMBLY (25 RPM-230V 50 Hz)
12	4	154-8640	FLANGED BEARING - BUFFER BRUSH (3/4" ROTATED)
12	5	154-8638	BUFFER BRUSH LIFTING LINK - LEFT
12	5	154-8639	BUFFER BRUSH LIFTING LINK - RIGHT (NOT SHOWN)
12	6	154-8837	CAM TO BRUSH LIFTING ROD LINK ASSEMBLY
12	7	154-8637	BUFFER BRUSH LIFTING ASSEMBLY
12	8	154-6243	MOTOR CAM-DUAL LOBES (STACKED SWITCHES)
12	9	153-2027A	JAM NUT - 5/16-18
12	10	153-2801	SHOULDER BOLT-3/8 X 3/8 (5/16-18)
12	11	153-2801A	SHOULDER BOLT-3/8 X 3/8-CUT (5/16-18)

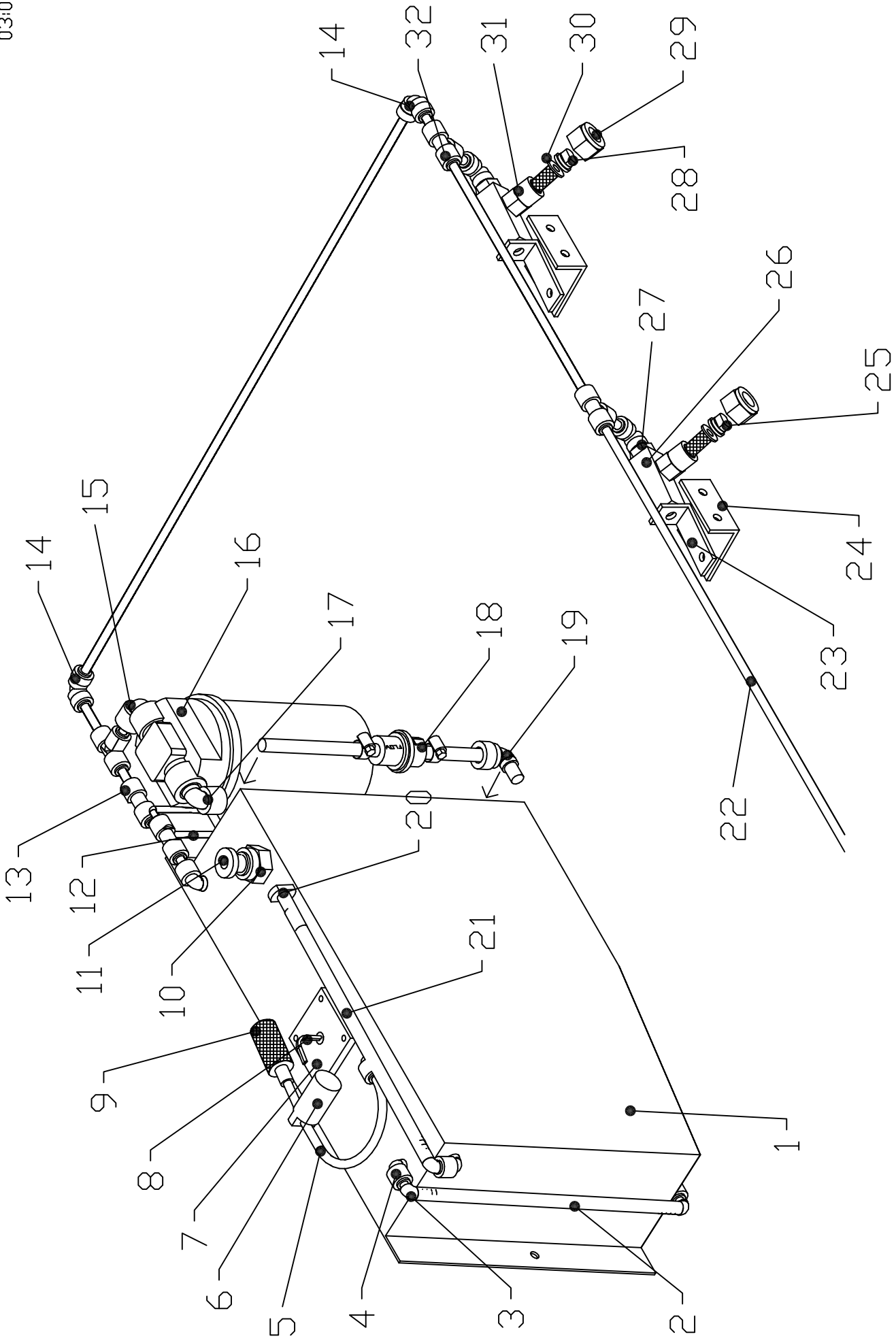


FIGURE 13

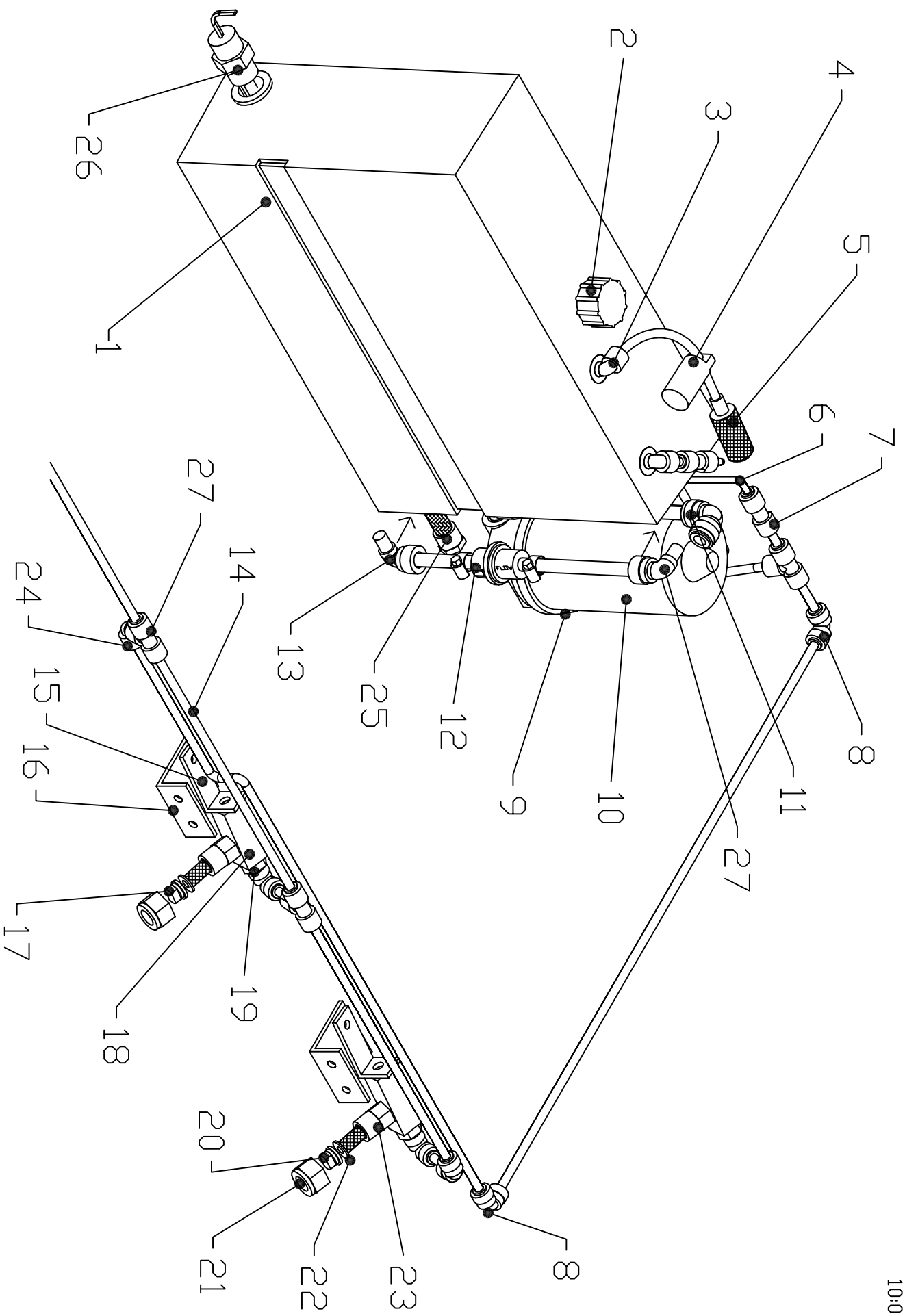


FIGURE 13

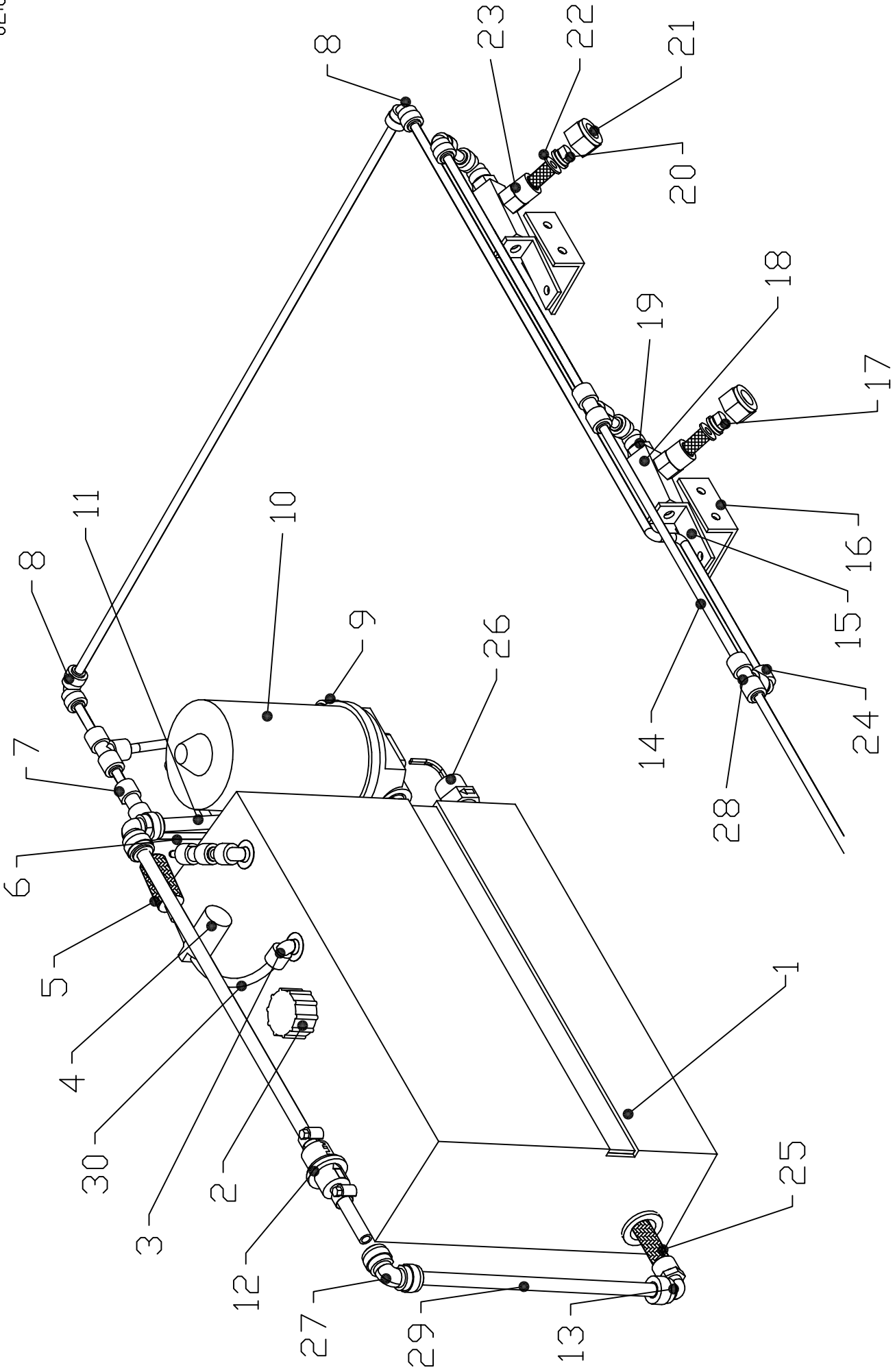


FIGURE 13

FIGURE NUMBER	INDEX NUMBER	PART NUMBER	PART NAME & DESCRIPTION
FIGURE 13 PART NUMBERS			
13	1	154-6722	CLEANER SUPPLY TANK (NO FITTINGS)
13	1	154-8680	CLEANER SUPPLY TANK (WITH FITTINGS)
13	2	154-0832	GARDEN HOSE FITTING CAP W/ GASKET
13	3	154-0223	ELBOW (90 DEGREE) - 1/4 NPT x 1/4" TUBE
13	4	154-1601	VALVE FOR TANK VENT - 24V DC 2-WAY (1/8" BARB)
13	5	154-8246	FILTER ASSEMBLY FOR VENT VALVE
13	6	154-0202B	PENCIL TUBING STOCK-3/16" OD X 1/16" ID
13	7	154-0248	REDUCING UNION CONNECTOR-1/4" X 3/16"
13	8	154-0243	ELBOW (90 DEGREE) 1/4 X 1/4 (GUEST)
13	9	154-0412	ELBOW - 3/8 NPT X 1/4 TUBE
13	10	153-8206F	WATER PUMP-FLOJET 115V
13	10	153-8206H	WATER PUMP-FLOJET 230V
13	11	154-0803	ELBOW - 3/8 NPT X 3/8" TUBE
13	12	154-0255	IN-LINE FILTER
13	12	154-8867	IN-LINE FILTER ASSEMBLY
13	13	154-0225	ELBOW - 3/8 TUBE OD X 1/4 NPT
13	14	153-0208S	SPRAY HOSE STOCK - 1/4" OD
13	15	153-6251S	SPRAY JET SWIVEL MOUNTING ANGLE
13	16	153-6251M	SPRAY JET WALL MOUNTING ANGLE
13	17	153-0207	SPRAY TIP - STAINLESS STEEL (8003)
13	18	153-6252	SPRAY JET BODY
13	19	153-0818	MALE SWIVEL ELBOW - 1/4 TUBE-1/4 NPT
13	20	154-0007	SPRAY TIP - STAINLESS STEEL (1501)
13	21	153-0218	TIP RETAINER CAP CONNECTOR
13	22	153-0220	SCREEN CHECK VALVE (POLYPROPYLENE - 10#)
13	23	153-0217	MALE BODY (1/4 - NYLON)
13	24	154-0222	ELBOW - 1/4" STEM X 1/4" TUBING OD
13	25	154-0212B	TANK FILTER (5" SS) FOR CLEANER TANK
13	26	154-1617	FLOAT - HORIZONTAL MOUNT FOR FLUID LEVEL
13	27	154-0256	ELBOW - 3/8 TUBE X 3/8 TUBE
13	28	153-0815	UNION TEE (1/4 X 1/4 X 1/4-QUICK DISC)
13	29	154-0202	PUMP TUBING STOCK (3/8" OD X 1/4" ID)
13	30	154-0202A	PENCIL TUBING STOCK - 1/4" OD X 1/8" ID

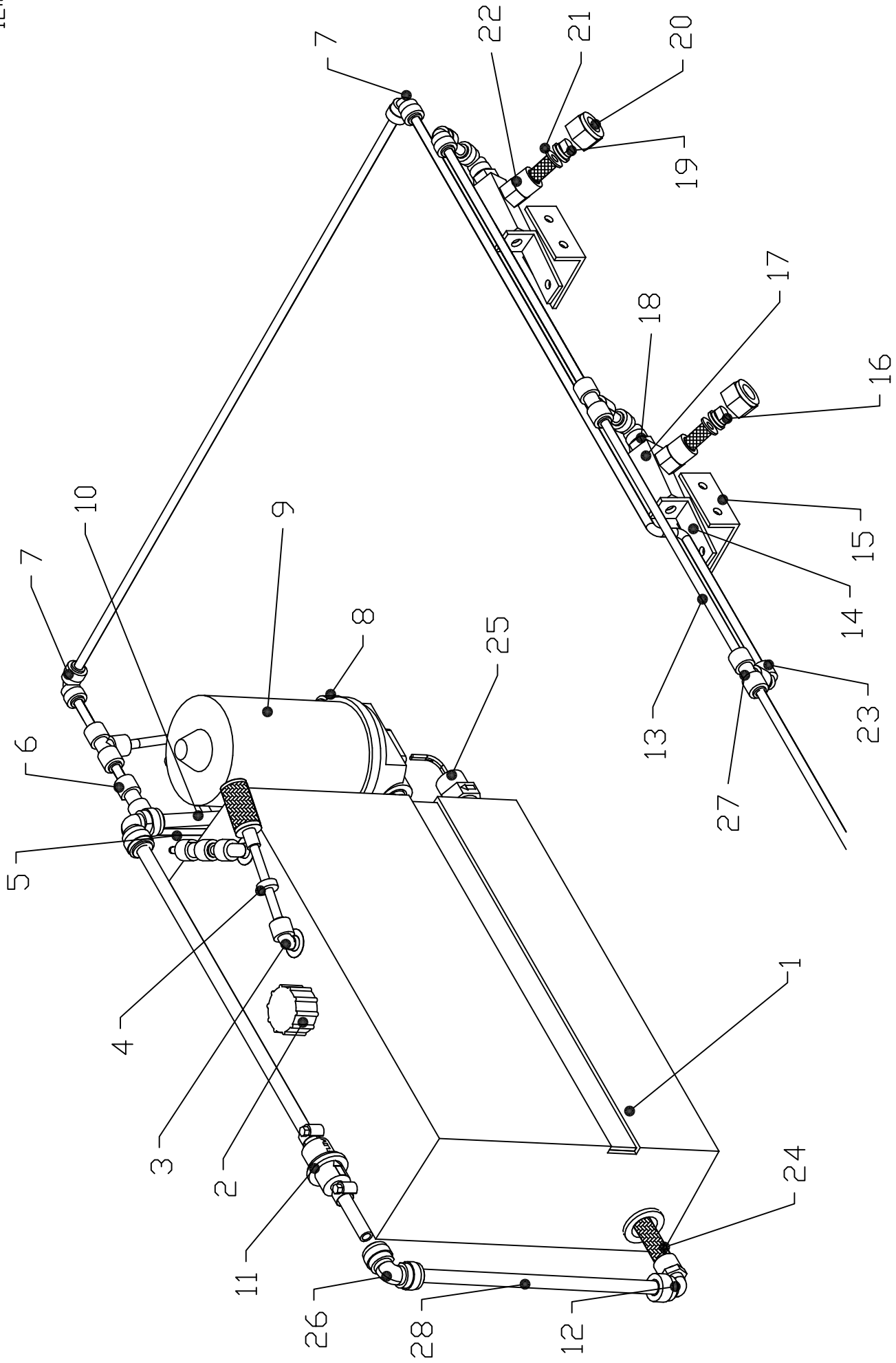


FIGURE 13

FIGURE NUMBER	INDEX NUMBER	PART NUMBER	PART NAME & DESCRIPTION
FIGURE 13 PART NUMBERS			
13	1	154-6722	CLEANER SUPPLY TANK (NO FITTINGS)
13	1	154-8680	CLEANER SUPPLY TANK (WITH FITTINGS)
13	2	154-0832	GARDEN HOSE FITTING CAP W/ GASKET
13	3	154-0223	ELBOW (90 DEGREE) - 1/4 NPT x 1/4" TUBE
13	4	154-8817	MANUAL VENT VALVE ASSEMBLY
13	5	154-0202B	PENCIL TUBING STOCK-3/16" OD X 1/16" ID
13	6	154-0248	REDUCING UNION CONNECTOR-1/4" X 3/16"
13	7	154-0243	ELBOW (90 DEGREE) 1/4 X 1/4 (GUEST)
13	8	154-0412	ELBOW - 3/8 NPT X 1/4 TUBE
13	9	153-8206F	WATER PUMP-FLOJET 115V
13	9	153-8206H	WATER PUMP-FLOJET 230V
13	10	154-0803	ELBOW - 3/8 NPT X 3/8" TUBE
13	11	154-0255	IN-LINE FILTER
13	11	154-8867	IN-LINE FILTER ASSEMBLY
13	12	154-0225	ELBOW - 3/8 TUBE OD X 1/4 NPT
13	13	153-0208S	SPRAY HOSE STOCK - 1/4" OD
13	14	153-6251S	SPRAY JET SWIVEL MOUNTING ANGLE
13	15	153-6251M	SPRAY JET WALL MOUNTING ANGLE
13	16	153-0207	SPRAY TIP - STAINLESS STEEL (8003)
13	17	153-6252	SPRAY JET BODY
13	18	153-0818	MALE SWIVEL ELBOW - 1/4 TUBE-1/4 NPT
13	19	154-0007	SPRAY TIP - STAINLESS STEEL (1501)
13	20	153-0218	TIP RETAINER CAP CONNECTOR
13	21	153-0220	SCREEN CHECK VALVE (POLYPROPYLENE - 10#)
13	22	153-0217	MALE BODY (1/4 - NYLON)
13	23	154-0222	ELBOW - 1/4" STEM X 1/4" TUBING OD
13	24	154-0212B	TANK FILTER (5" SS) FOR CLEANER TANK
13	25	154-1617	FLOAT - HORIZONTAL MOUNT FOR FLUID LEVEL
13	26	154-0256	ELBOW - 3/8 TUBE X 3/8 TUBE
13	27	153-0815	UNION TEE (1/4 X 1/4 X 1/4-QUICK DISC)
13	28	154-0202	PUMP TUBING STOCK (3/8" OD X 1/4" ID)

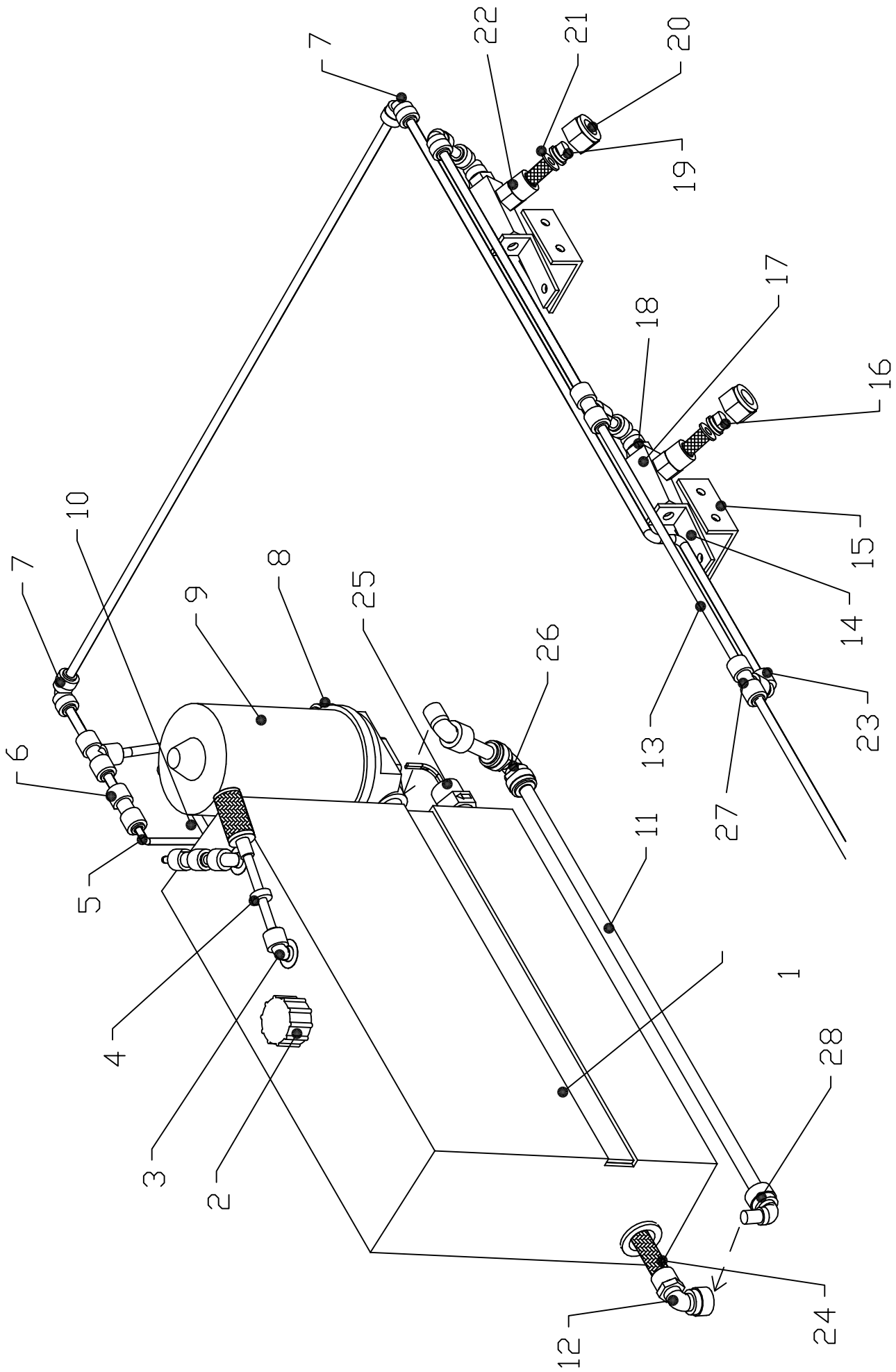


FIGURE 13

FIGURE NUMBER	INDEX NUMBER	PART NUMBER	PART NAME & DESCRIPTION
FIGURE 13 PART NUMBERS			
13	1	154-6722	CLEANER SUPPLY TANK (NO FITTINGS)
13	1	154-8680	CLEANER SUPPLY TANK (WITH FITTINGS)
13	2	154-0832	GARDEN HOSE FITTING CAP W/ GASKET
13	3	154-0223	ELBOW (90 DEGREE) - 1/4 NPT x 1/4" TUBE
13	4	154-8817	MANUAL VENT VALVE ASSEMBLY
13	5	154-0202B	PENCIL TUBING STOCK-3/16" OD X 1/16" ID
13	6	154-0248	REDUCING UNION CONNECTOR-1/4" X 3/16"
13	7	154-0243	ELBOW (90 DEGREE) 1/4 X 1/4 (GUEST)
13	8	154-0412	ELBOW - 3/8 NPT X 1/4 TUBE
13	9	153-8206F	WATER PUMP-FLOJET 115V
13	9	153-8206H	WATER PUMP-FLOJET 230V
13	10	154-0803	ELBOW - 3/8 NPT X 3/8" TUBE
13	11	154-0202	PUMP TUBING STOCK (3/8" OD X 1/4" ID)
13	12	154-0225	ELBOW - 3/8 TUBE OD X 1/4 NPT
13	13	153-0208S	SPRAY HOSE STOCK - 1/4" OD
13	14	153-6251S	SPRAY JET SWIVEL MOUNTING ANGLE
13	15	153-6251M	SPRAY JET WALL MOUNTING ANGLE
13	16	153-0207	SPRAY TIP - STAINLESS STEEL (8003)
13	17	153-6252	SPRAY JET BODY
13	18	153-0818	MALE SWIVEL ELBOW - 1/4 TUBE-1/4 NPT
13	19	154-0007	SPRAY TIP - STAINLESS STEEL (1501)
13	20	153-0218	TIP RETAINER CAP CONNECTOR
13	21	153-0220	SCREEN CHECK VALVE (POLYPROPYLENE - 10#)
13	22	153-0217	MALE BODY (1/4 - NYLON)
13	23	154-0222	ELBOW - 1/4" STEM X 1/4" TUBING OD
13	24	154-0212B	TANK FILTER (5" SS) FOR CLEANER TANK
13	25	154-1617	FLOAT - HORIZONTAL MOUNT FOR FLUID LEVEL
13	26	154-0256	ELBOW - 3/8 TUBE X 3/8 TUBE
13	27	153-0815	UNION TEE (1/4 X 1/4 X 1/4-QUICK DISC)
13	28	154-0258	ELBOW - 3/8 STEM X 3/8 TUBE

RIGHT SIDE

LEFT SIDE

03:01

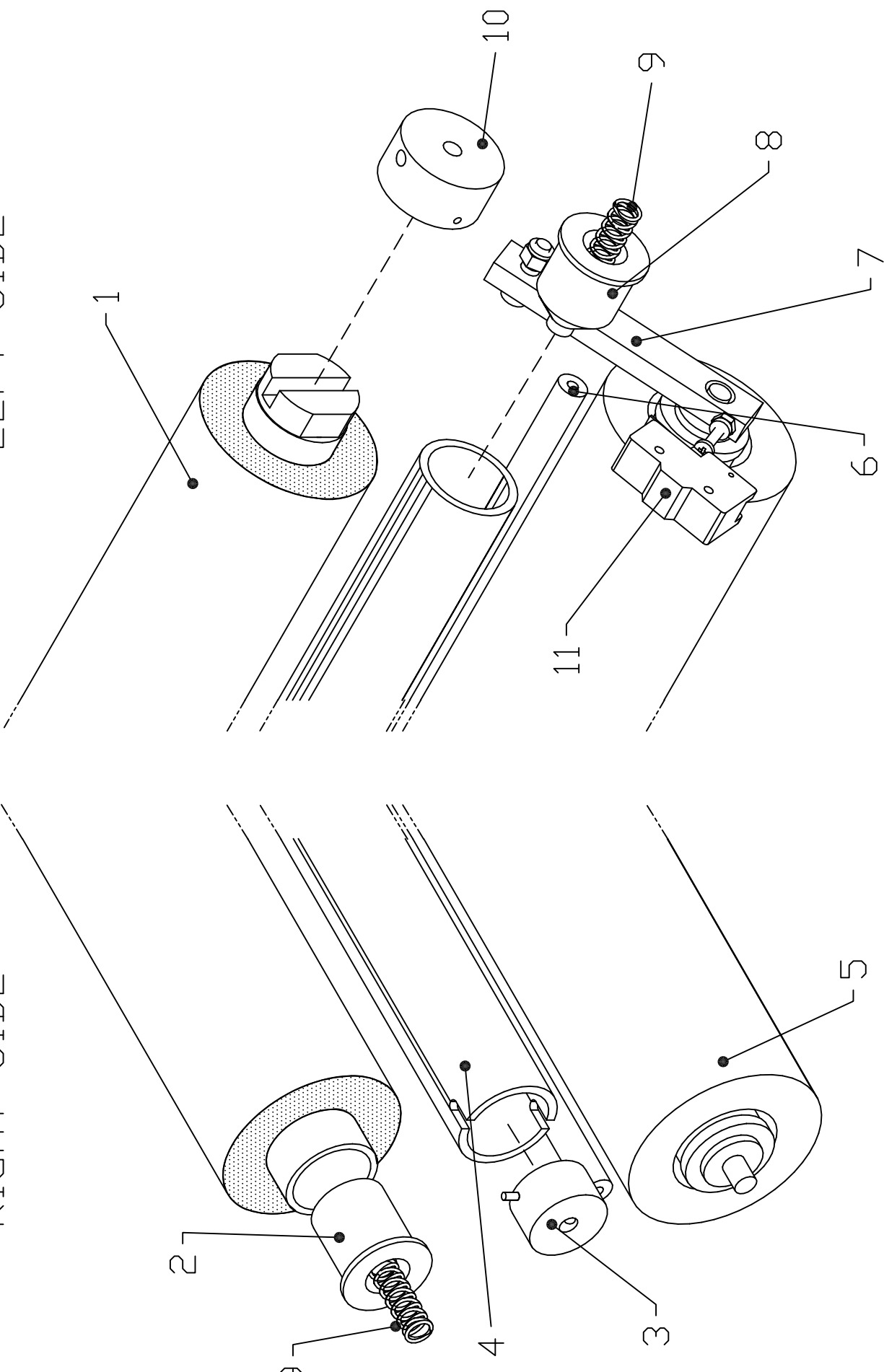


FIGURE 14

FIGURE NUMBER	INDEX NUMBER	PART NUMBER	PART NAME & DESCRIPTION
FIGURE 14 PART NUMBERS			
14	1	153-0047A	DUSTER CLOTH - DBA BLUE (8460)
14	2	153-6850	UHMW DUSTER PLUG FOR CARDBOARD CORE
14	3	153-8202B	DUSTER SOLID DRIVE HUB (PVC-1/4-28)
14	4	153-8824	PVC TAKE-UP REEL ASSEMBLY (44-3/4")
14	5	153-8838	CUSHION ROLLER WITH STEMS (STEEL=44-3/8)
14	6	153-6825	DUSTER CLOTH ROUTING BAR (SS)
14	7	153-8420	CUSHION ROLLER PIVOT ARM ASSEMBLY
14	8	153-6853	UHMW DUSTER PLUG FOR PVC TAKE-UP REEL
14	9	153-2808	SPRING - 0.42 OD X 1.25 (DUSTER PLUG)
14	10	153-8201B	DUSTER DRIVE HUB ASSEMBLY (1/4-28)
14	11	154-1603	MICROSWITCH-WITHOUT ROLLER (LARGE)

PHOENIX-S
IMPORTANT NOTES