

SECTION XI - Mechanical Drawings

Table of Contents

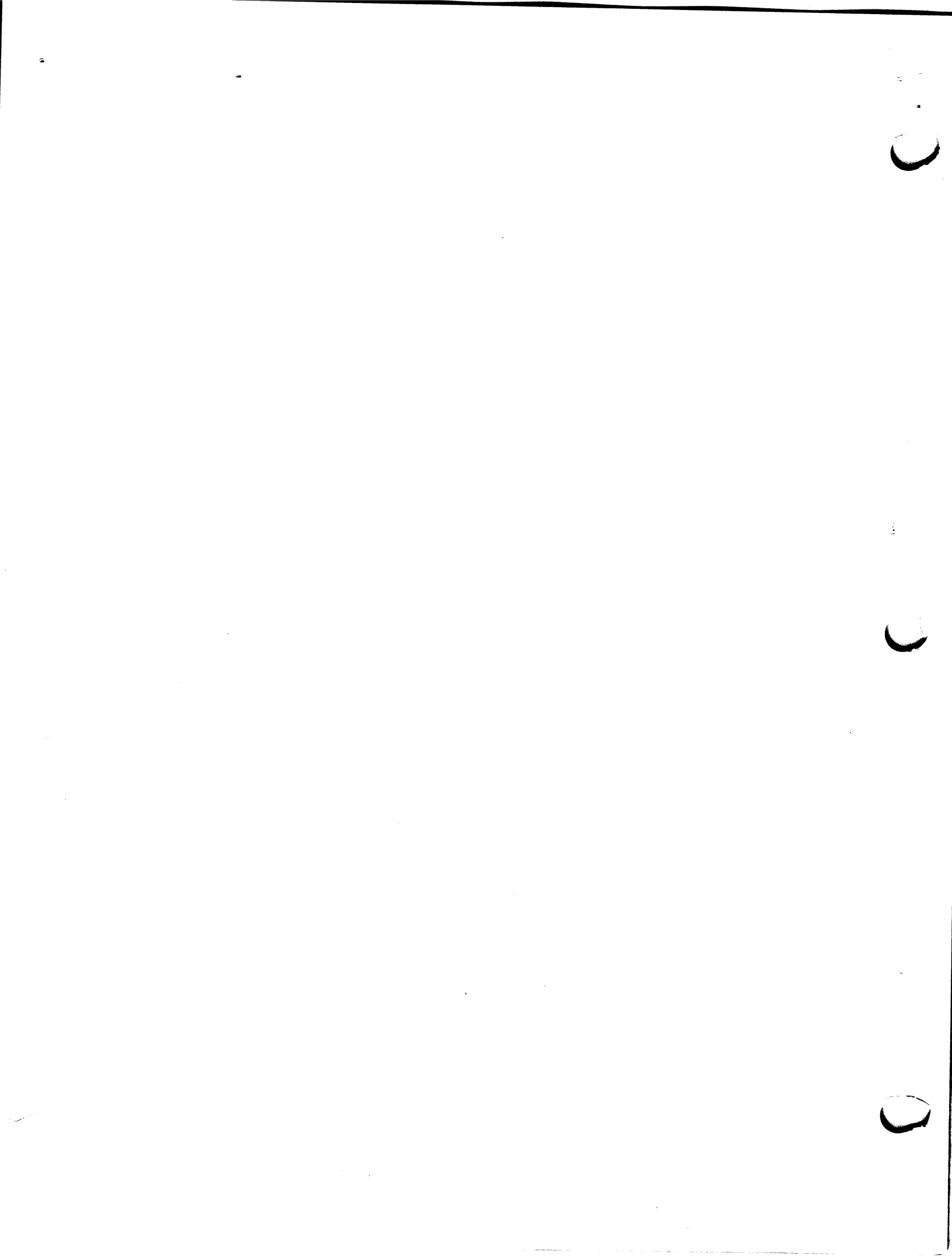
Edition 12:02

Electrical Wiring Diagram - 115V/60 Hz

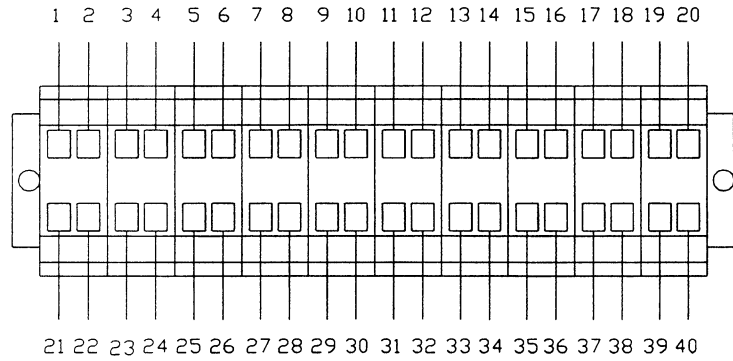
Electrical Wiring Diagram - 230V/50 Hz

Terminal Block Diagram

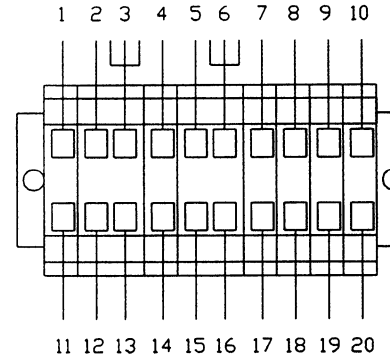
Overhead View	Figure 1
Bottom View	Figure 2
Right Side	Figure 3
Left Side	Figure 4
Control Plate Assembly	Figure 5
Lane Distance Sensor Assembly	Figure 6
Speed Control & Drive Motor	Figure 7
Cleaner Supply System	Figure 8
Conditioning Assembly	Figure 9
Conditioner Transfer Assembly	Figure 10
Squeegee Motor Assembly	Figure 11
Duster Assembly	Figure 12
Buffer Brush Lifting Motor Assembly	Figure 13
Attaching Parts Breakdown (Fasteners)	Page 1
Complete Parts List	Page 1



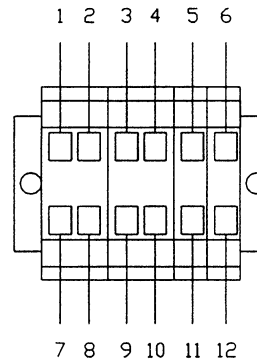
TB-1



TB-2



TB-3



THE KEGEL CO. 6800 US HWY 27 N
SEBRING, FL 33870
(863) 382-6588

DESCRIPTION
TERMINAL BLOCK
WIRING SCHEMATIC
DO NOT SCALE DRAWING

DRAWN BY
CREWS

DATE
04/16/01

CHECKER
SOWARDS

ENGINEER
M. DAVIS

SIZE
C

VOLTAGE/Hz
115/60
230/50

PART NUMBER

SCALE
N/A

SHEET
2 OF 2

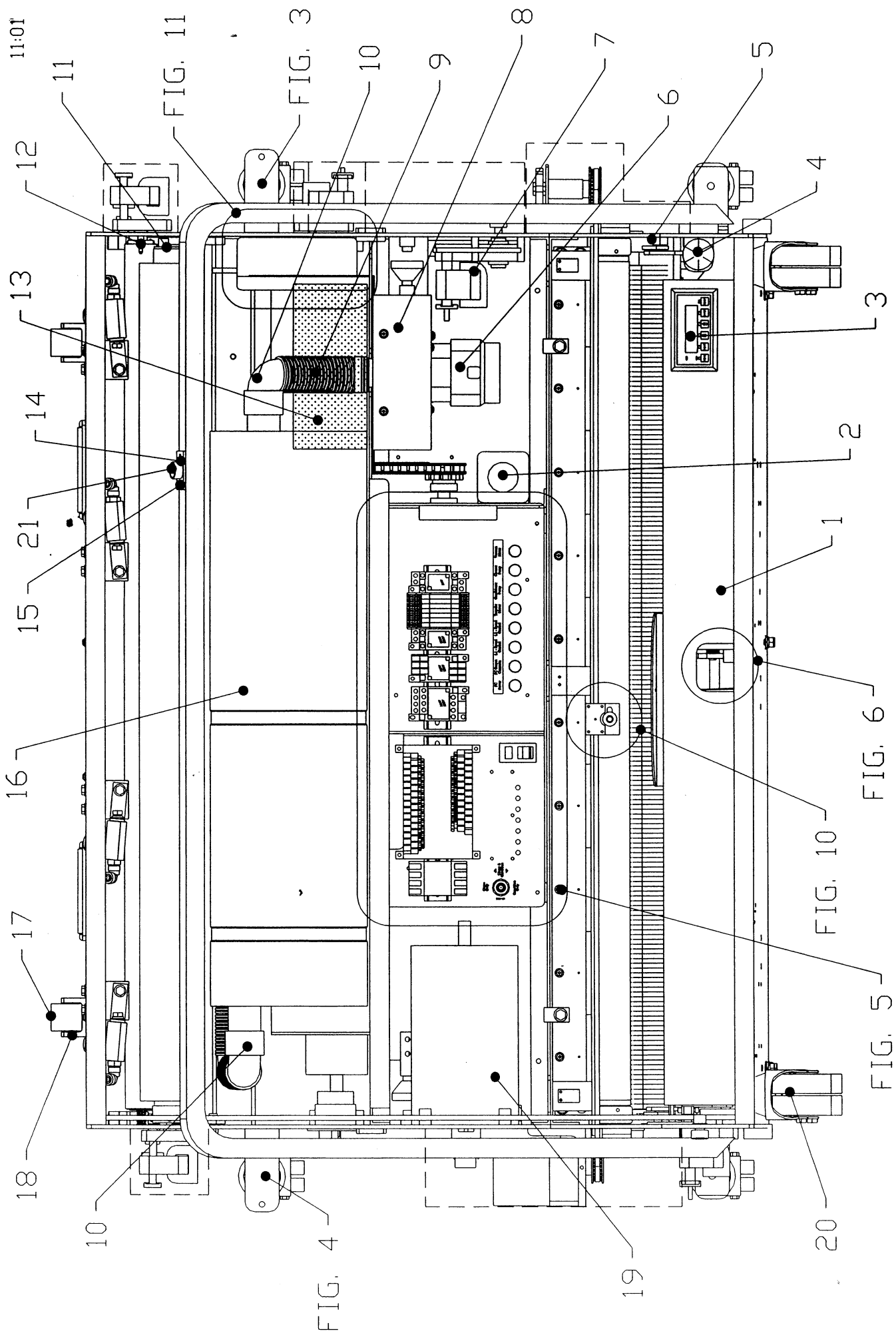


FIGURE 1

FIG. 5

FIG. 6

FIG. 10

11:01



FIGURE NUMBER	INDEX NUMBER	PART NUMBER	PART NAME & DESCRIPTION
FIGURE 1 PART NUMBERS			
1	1	154-8818	SPLASH GUARD ASSEMBLY
1	2	154-1250	EMERGENCY STOP CIRCUIT BREAKER ASSEMBLY
1	3	154-8806	KEYPAD ASSEMBLY
1	4	154-1225	PRESSURE GAUGE (0-30 PSI) - 1-1/2 DIA
1	5	154-8823	LANE TO LANE HANDLE ASSEMBLY
1	6	154-8805	VACUUM MOTOR ASSEMBLY - 115V
1	6	154-8805E	VACUUM MOTOR ASSEMBLY - 230V
1	7	154-8206	TRANSFER ROLLER MOTOR - 25 RPM (115V)
1	7	154-8206A	TRANSFER ROLLER MOTOR - 25 RPM (230V)
1	8	154-8625	VACUUM MOTOR HOUSING - ALUMINUM
1	9	154-0260	FLEXIBLE VACUUM HOSE STOCK (1-1/2" ID)
1	10	153-8827T	1-1/4 PVC ELBOW-TANK INLET (NO THREADS)
1	11	153-6850	UHMW DUSTER PLUG FOR CARDBOARD CORE
1	12	153-8202B	DUSTER SOLID DRIVE HUB (PVC-1/4-28)
1	13	154-8804	MAIN DRIVE SHAFT GUARD ASSEMBLY
1	14	153-6437	PUSH BUTTON MOUNTING PLATE
1	15	153-1209	BUTTON GUARD
1	16	154-8683	POLYETHYLENE RECOVERY TANK ASSEMBLY (2002)
1	17	153-8311	MOMENTARY WHEEL ASSEMBLY (URETHANE)
1	18	153-6029	MOMENTARY WHEEL HOUSING
1	19	154-8616A	BUFFER MOTOR ASSEMBLY (115V-AC ONLY)
1	19	154-8616E	BUFFER MOTOR ASSEMBLY (230V-AC ONLY)
1	20	153-0001	TRANSPORT CASTER (3" DUAL WHEEL)
1	21	154-8624	PUSH BUTTON REPLACEMENT HARNESS

FIGURE 1

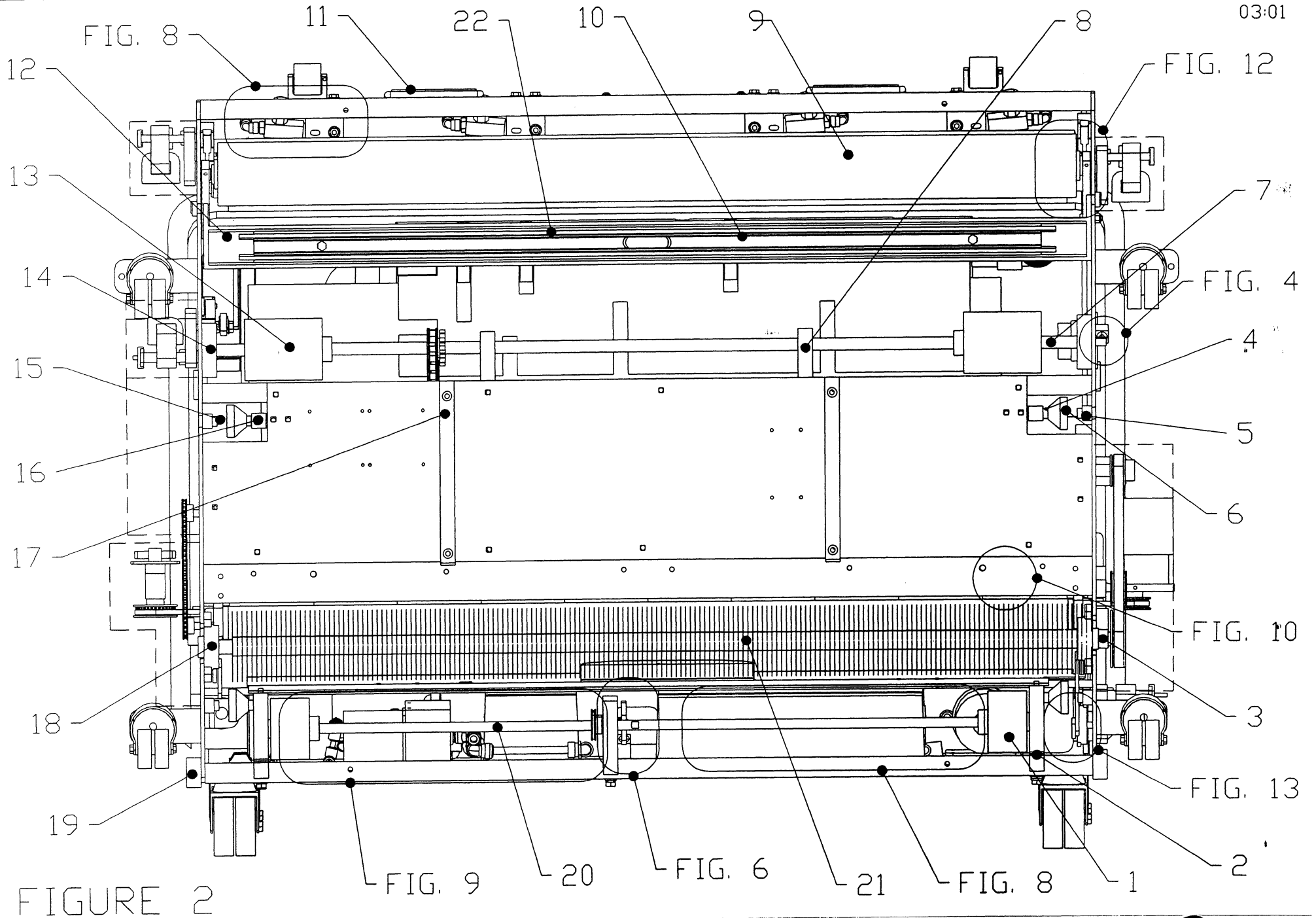


FIGURE 2

FIGURE NUMBER	INDEX NUMBER	PART NUMBER	PART NAME & DESCRIPTION
FIGURE 2 PART NUMBERS			
2	1	153-7002AA	LANE DISTANCE COUNTER WHEEL-TREADED (2")
2	2	154-8619	PILLOWBLOCK-LANE DISTANCE (LEFT-FLANGED)
2	3	154-6664	BUFFER BRUSH PULLEY SPACER
2	4	153-9034	PLAIN BUSHING (3/8 X 1/2 X 1/4)
2	5	154-6652	GUIDE ROLLER MOUNT BLOCK
2	6	153-8410	LANE EDGE GUIDE ROLLER W/BUSHING (1/2")
2	7	154-6820	MAIN DRIVE SHAFT
2	8	154-8803	DRIVE SHAFT PILLOWBLOCK
2	9	153-8838	CUSHION ROLLER WITH STEMS (STEEL=44-3/8)
2	10	153-0202	COMPLETE SQUEEGEE ASSEMBLY (BLUE)
2	11	154-0810	LIFTING HANDLE (SS SPRING-LOADED CHEST)
2	12	154-6339-2915	SQUEEGEE MOUNT ANGLE (PAINTED)
2	13	153-7013	URETHANE-BLEND LANE DRIVE WHEEL (4")
2	14	154-8007	SIDE PLATE PILLOWBLOCK FOR DRIVE SHAFT
2	15	153-2401	SPRING - 0.54 OD X 0.75 (GUIDE ROLLER)
2	16	154-6651	FRONT GUIDE ROLLER MOUNT
2	17	154-6833	SKID GUIDES
2	18	154-8640	FLANGED BEARING FOR BUFFER BRUSH (3/4" ROTATED)
2	19	154-6042	UHMW WHEEL - CORNER GUARD
2	20	154-6821	LDS SHAFT
2	21	154-8641	BUFFER BRUSH (BLUE 3-3/4" X 48)
2	22	153-0202B	REPLACEMENT SQUEEGEE BLADE-BLUE STOCK

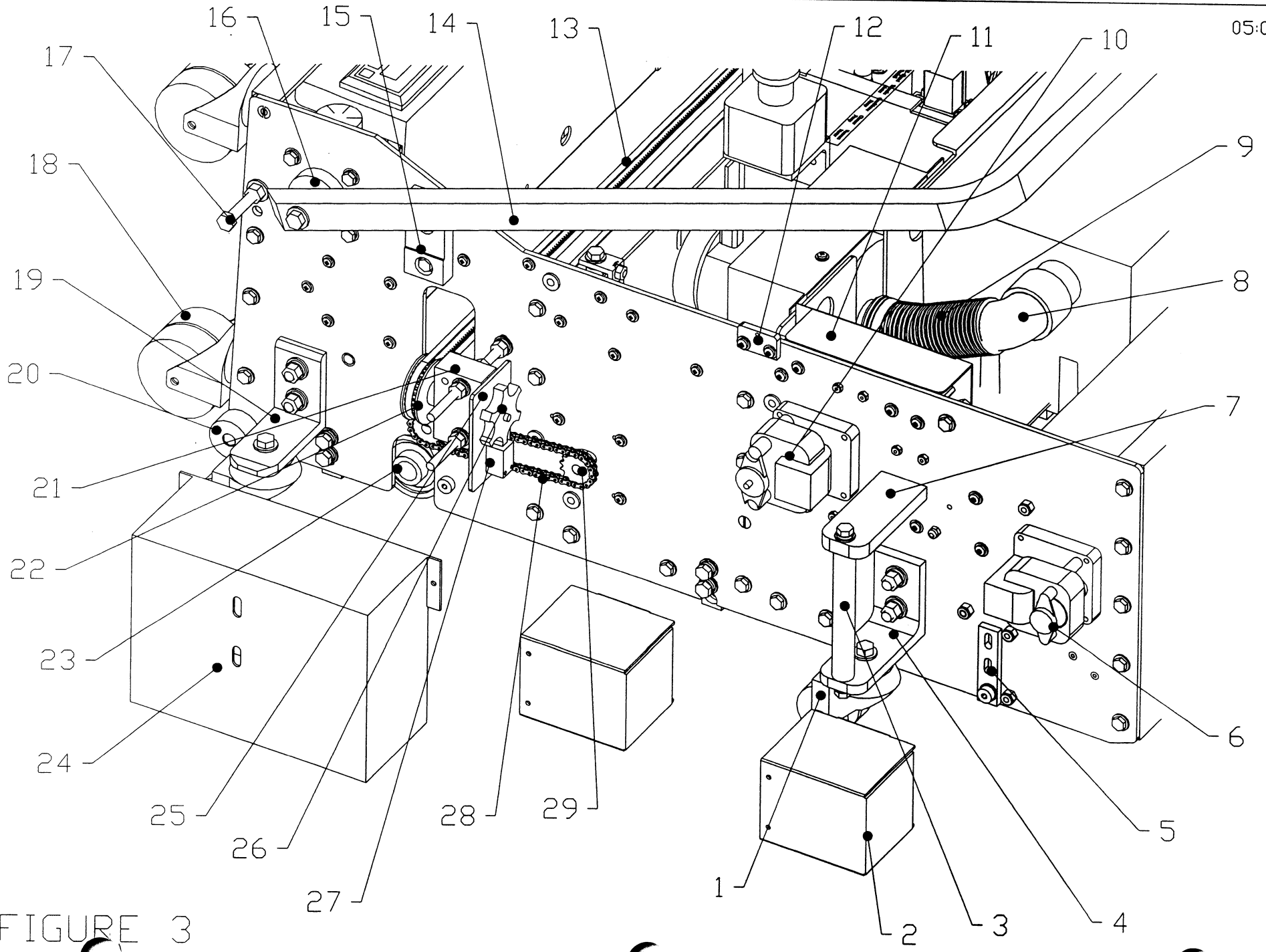


FIGURE 3

FIGURE NUMBER	INDEX NUMBER	PART NUMBER	PART NAME & DESCRIPTION
FIGURE 3 PART NUMBERS			
3	1	153-0812	TRANSPORT CASTER-2" HEAVY DUTY (3/8")
3	2	153-6412	DUSTER MOTOR SHIELD (7 RPM)
3	3	154-6627	SIDE LIFT HANDLE
3	4	154-6628	CASTER/HANDLE MOUNT ANGLE
3	5	154-8802	SQUEEGEE ADJUSTMENT ARM - RIGHT
3	6	153-8403	BRAKE MOTOR ASSEMBLY (7 RPM-115 VOLT)
3	6	153-8803H	BRAKE MOTOR ASSEMBLY (7 RPM-230V 50 Hz)
3	7	154-6629	SIDE LIFT HANDLE MOUNT
3	8	153-8827T	1-1/4 PVC ELBOW FOR TANK INLET (NO THREADS)
3	9	154-0260	FLEXIBLE VACUUM HOSE STOCK (1-1/2" ID)
3	10	153-8207	BRAKE MOTOR ASSEMBLY (25 RPM-115 VOLT)
3	10	153-8807H	BRAKE MOTOR ASSEMBLY (25 RPM-230V 50 Hz)
3	11	154-8607	GUARD FOR SQUEEGEE & DUSTER SWITCH-FELT
3	12	154-6698	LID MOUNT PLATE
3	13	154-9201	BELT FOR HEAD DRIVE (XL025 - 9 FEET)
3	14	154-8823	LANE TO LANE HANDLE ASSEMBLY
3	15	154-6041	UHMW HANDLE STOP
3	16	153-6851	UHMW HANDLE SPACER
3	17	153-2818	HHCS - 3/8-16 X 2-1/2 (GRADE 8)
3	18	153-0001	TRANSPORT CASTER (3" DUAL WHEEL)
3	19	154-6221	MOUNTING ANGLE - HEAVY DUTY CASTER (3 x 3.625)
3	20	154-6042	UHMW WHEEL - CORNER GUARD
3	21	154-9204	PULLEY - HEAD IDLER (32XL-1/4" BORE-W/SET)
3	22	154-8643	MOUNTING BLOCK FOR TIMING PULLEY-STD
3	23	154-8640	FLANGED BEARING FOR BUFFER BRUSH (3/4" ROTATED)
3	24	154-6818	HEAD SENSOR GUARD
3	25	154-6829	MOUNTING PLATE - HEAD TIMING SENSORS
3	26	154-6831	6-TOOTH SENSOR DISK - ALUMINUM
3	27	154-1220	INDUCTIVE PROXIMITY SENSOR (TL-Q5MC1)
3	28	154-9602	TRANSFER DRIVE CHAIN (25P51)
3	29	153-9010	SPROCKET-25B15 (5/16")

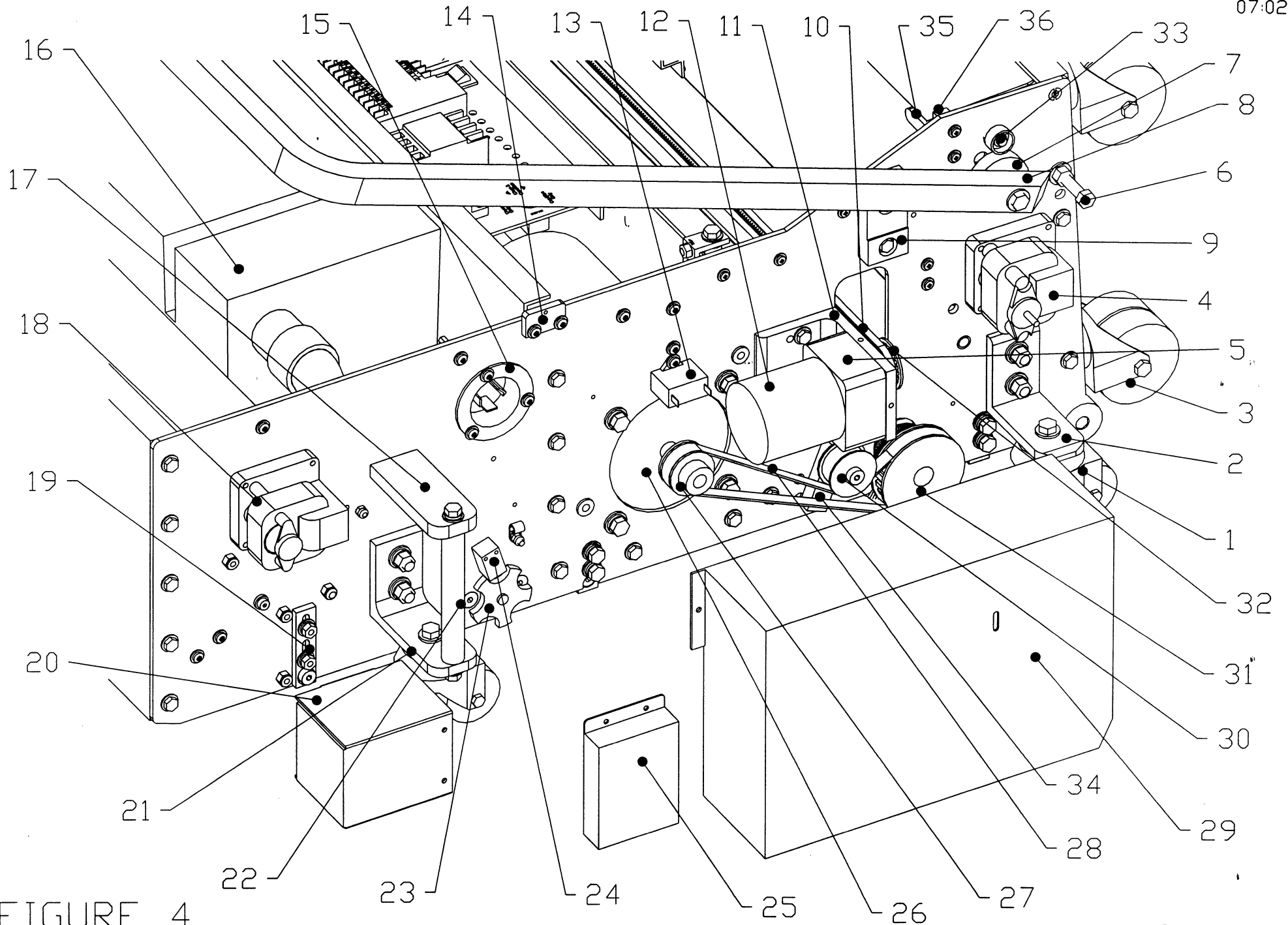


FIGURE 4

FIGURE NUMBER	INDEX NUMBER	PART NUMBER	PART NAME & DESCRIPTION
4	1	153-0812	TRANSPORT CASTER-2" HEAVY DUTY (3/8")
4	2	154-6221	MOUNTING ANGLE-HEAVY CASTER (3 X 3.625)
4	3	153-0001	TRANSPORT CASTER (3" DUAL WHEEL)
4	4	153-8207	BRAKE MOTOR ASSEMBLY (25 RPM-115 VOLT)
4	4	153-8807H	BRAKE MOTOR ASSEMBLY (25 RPM-230V 50 Hz)
4	5	154-1206	GEARBOX FOR HEAD DRIVE MOTOR (5:1 RATIO)
4	6	153-2818	HHCS - 3/8-16 X 2-1/2 (GRADE 8)
4	7	153-6851	UHMW HANDLE SPACER
4	8	154-8823	LANE TO LANE HANDLE ASSEMBLY
4	9	154-6041	UHMW HANDLE STOP
4	10	154-9201	BELT FOR HEAD DRIVE (XL025 - 9 FEET)
4	11	154-6222	MOUNTING ANGLE - HEAD DRIVE MOTOR
4	12	154-8232	HEAD DRIVE MOTOR-115V ST (NO GEARBOX)
4	12	154-8632	HEAD DRIVE MOTOR-230V STD (NO GEARBOX)
4	13	154-1208	MOTOR CAPACITOR (6.0 mF)
4	13	154-1208B	MOTOR CAPACITOR (1.5 mF)
4	14	154-6698	LID MOUNT PLATE
4	15	153-1823	FLANGED TWISTLOCK INLET - 125V/20A
4	15	153-1826	FLANGED TWISTLOCK INLET - 250V/20A
4	16	154-8683	POLYETHYLENE RECOVERY TANK ASSEMBLY (2002)
4	17	154-6629	SIDE LIFT HANDLE MOUNT
4	18	153-8403	BRAKE MOTOR ASSEMBLY (7 RPM-115 VOLT)
4	18	153-8803H	BRAKE MOTOR ASSEMBLY (7 RPM-230V 50 Hz)
4	19	154-8801	SQUEEGEE ADJUSTMENT ARM - LEFT
4	20	153-6412	DUSTER MOTOR SHIELD (7 RPM)
4	21	154-6628	CASTER/HANDLE MOUNT ANGLE
4	22	154-6627	SIDE LIFT HANDLE
4	23	154-6717	5-TOOTH SENSOR DISK - ALUMINUM (3/8 BORE)
4	24	154-1220	INDUCTIVE PROXIMITY SENSOR (TL-Q5MC1)
4	25	154-6266	GUARD-TIMING DISK (LDS & TACH) ALUMINUM
4	26	154-8616A	BUFFER MOTOR ASSEMBLY (115V-AC ONLY)
4	26	154-8616E	BUFFER MOTOR ASSEMBLY (230V-AC ONLY)
4	27	153-9013	BUFFER MOTOR PULLEY (10L050-1/2")
4	27	154-9613	BUFFER MOTOR PULLEY (12L050-5/8" W/KEY)
4	28	154-9615	T-BELT 255L050 (BUFFER MOTOR)
4	29	154-6679	BUFFER/HEAD DRIVE GUARD
4	30	154-8839	BUFFER IDLER ASSEMBLY
4	31	153-9014	BUFFER PULLEY (24L050-3/4")
4	32	154-9205B	PULLEY (28XL 3/8" BORE W/DBL SET)
4	32	154-9205D	PULLEY (24XL 3/8" BORE W/DBL SET)
4	33	153-1408	PUSH BUTTON (RED = NORMALLY OPEN)
4	34	154-6841	BUFFER IDLER MOUNT BAR
4	35	154-6357	LATCH FOR SPLASH GUARD
4	36	154-6356	MOUNT BLOCK FOR LATCH

FIGURE 4

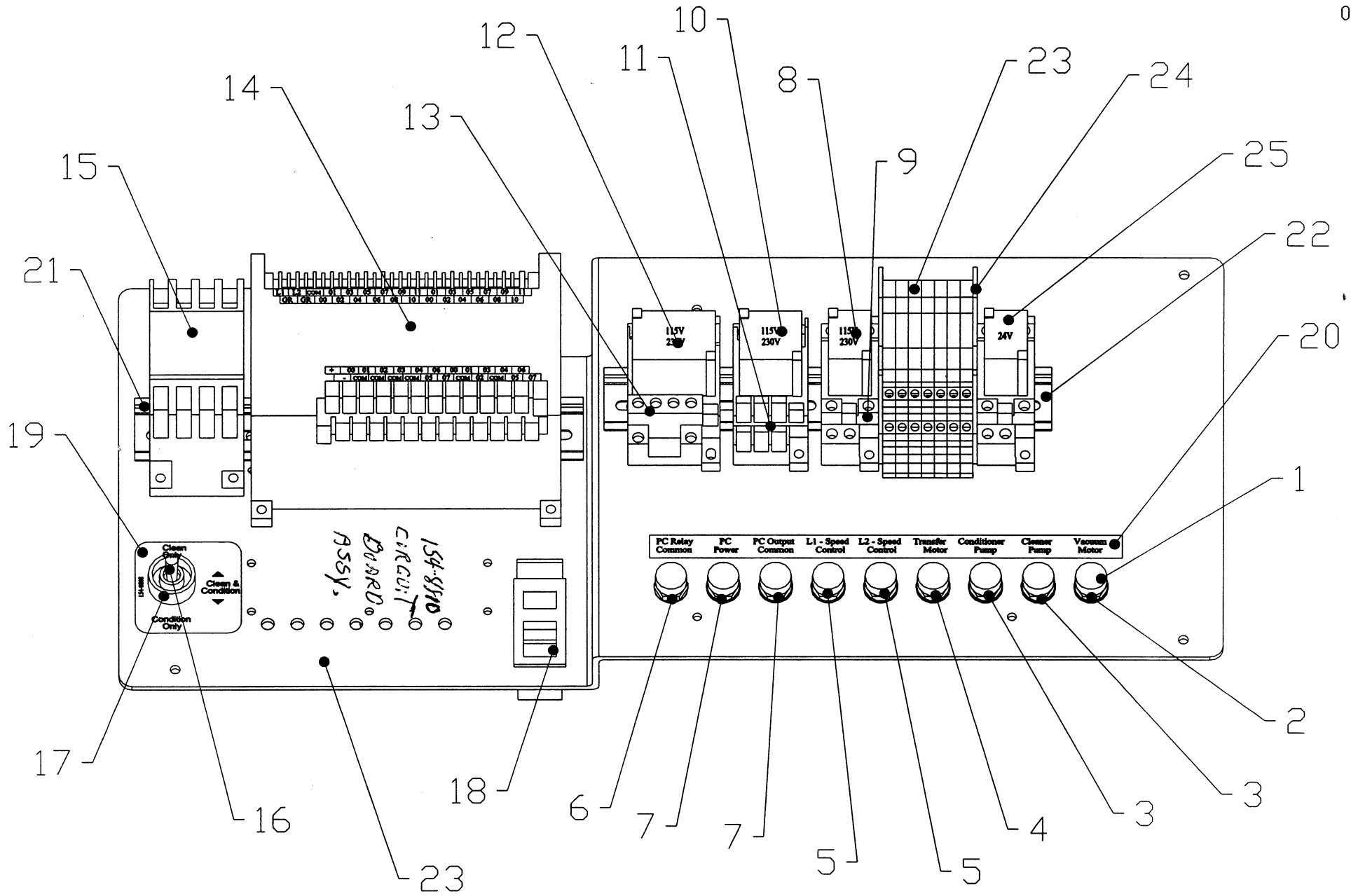


FIGURE 5

FF 0937
Rev 12:02

FIGURE NUMBER	INDEX NUMBER	PART NUMBER	PART NAME & DESCRIPTION
FIGURE 5 PART NUMBERS			
5	1	153-1028	PANEL-MOUNT FUSE HOLDER - UL (COMPLETE)
5	1	153-1028E	PANEL-MOUNT FUSE HOLDER - IEC (COMPLETE)
5	2	153-1810	CIRCUIT BREAKER - SPST (8A)
5	2	154-1273	FUSE - TIME DELAY (MDA-10A) UL
5	3	154-1262	FUSE - TIME DELAY (0.75A MDL) UL
5	3	154-1260E	FUSE - TIME DELAY (GDC-315mA) IEC
5	4	154-1266	FUSE - TIME DELAY (2.25A MDL) UL
5	4	154-1264E	FUSE - TIME DELAY (GDC-1A) IEC
5	5	154-1268C	FUSE - TIME DELAY (4A ABC) UL - CERAMIC
5	5	154-1267E	FUSE - TIME DELAY (GDA-4A) IEC - CERAMIC
5	6	154-1268	FUSE - TIME DELAY (4A MDL) UL
5	6	154-1268E	FUSE - TIME DELAY (GDC-4A) IEC
5	7	154-1261	FUSE - TIME DELAY (.5A MDL) UL
5	7	154-1261E	FUSE - TIME DELAY (GDC-500MA) IEC
5	8	153-1016	LY2 RELAY (115 VOLT)
5	8	153-1616	LY2 RELAY (230 VOLT)
5	9	153-1017	LY2 RELAY BASE
5	10	153-1018	LY3 RELAY (115 VOLT)
5	10	153-1618	LY3 RELAY (230 VOLT)
5	11	153-1019	LY3 RELAY BASE
5	12	153-1406	LY4 RELAY (115 VOLT)
5	12	154-1611	LY4 RELAY (230 VOLT)
5	13	153-1407	LY4 RELAY BASE
5	14	154-1801	MICROPROCESSOR - CPM2A
5	15	153-1004	BUFFER MOTOR CONTACTOR (115 VOLT)
5	15	153-1604	BUFFER MOTOR CONTACTOR (230 VOLT)
5	16	153-1009	TOGGLE SWITCH (DPDT)
5	17	153-1209	BUTTON GUARD
5	18	154-1272	CIRCUIT BREAKER - DPST (10A)
5	18	154-1610	CIRCUIT BREAKER - DPST (15A)
5	19	154-0808	TOGGLE SWITCH STICKER
5	20	154-0807	FUSE PANEL STICKER
5	21	153-1809C	DIN RAIL (8-1/4")
5	22	153-1809F	DIN RAIL (8-1/4")
5	23	154-1835	RELAY ASSY. COMPLETE (W/ RELAY)
5	24	154-1830	RELAY BASE SEPARATOR PLATE
5	25	153-1016D	LY2 RELAY - 24V

RIGHT SIDE

LEFT SIDE

03:01

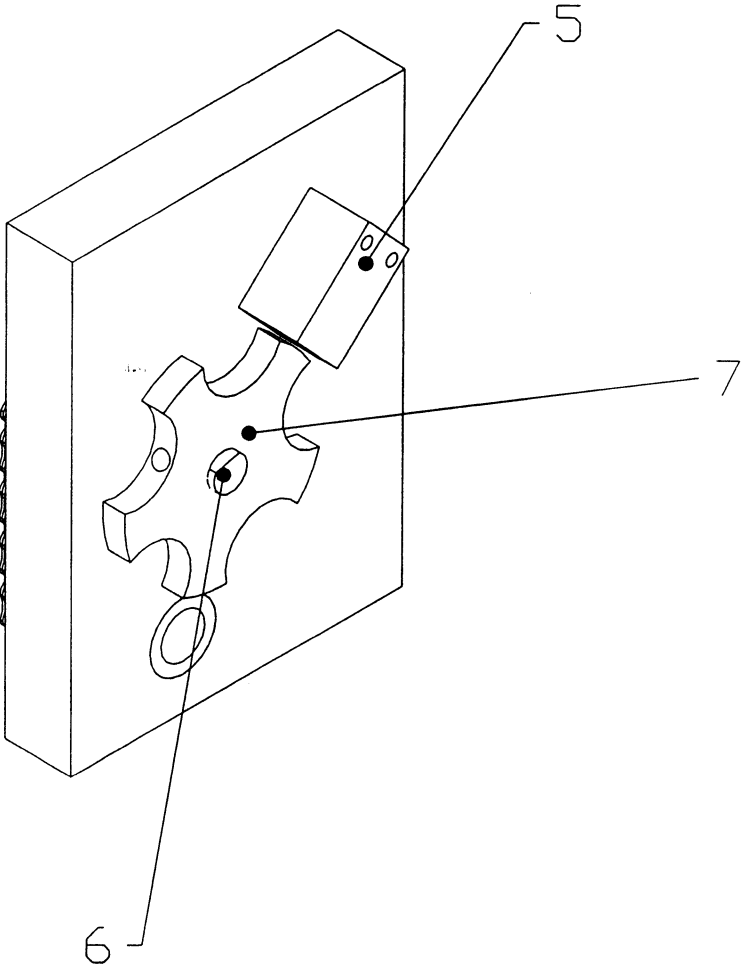
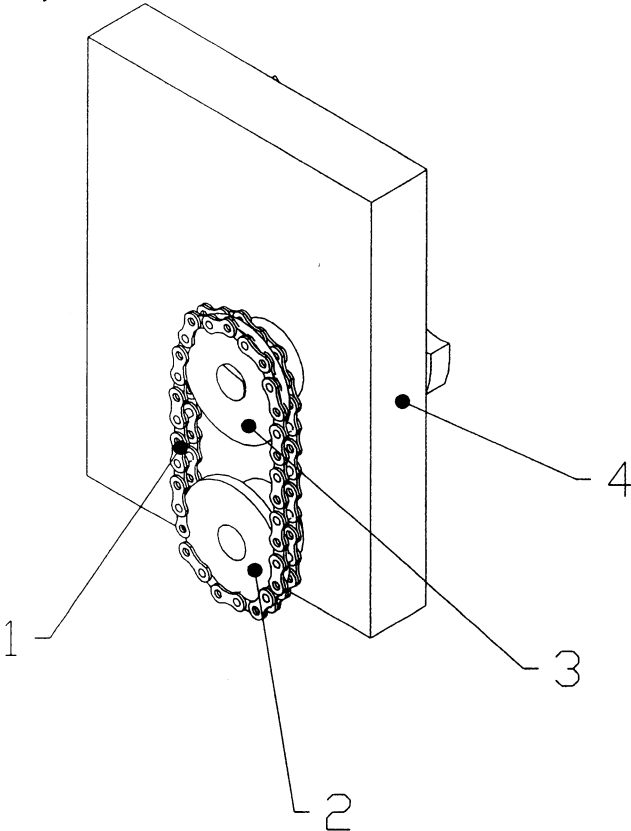


FIGURE 6

FIGURE NUMBER	INDEX NUMBER	PART NUMBER	PART NAME & DESCRIPTION
FIGURE 6 PART NUMBERS			
6	1	154-9211	LDS AND TACH SENSOR DRIVE CHAIN (25P29)
6	2	154-9213	SPROCKET - 25B15 (TACH AND LDS DRIVE 1/2" BORE)
6	3	153-9010	SPROCKET - 25B15 (TRANSFER DRIVE & LDS - 3/8")
6	4	154-8320	PILLOWBLOCK - LANE DISTANCE SHAFT (CENTER-PLAIN)
6	5	154-1220	PROXIMITY SENSOR
6	6	154-6264	SHAFT FOR TIMING DISK (REMOTE SENSOR)
6	7	154-6717	5-TOOTH ALUMINUM DISK (3/8 BORE)

FIGURE 7

CIRCUIT BOARD ASSY
154-8810

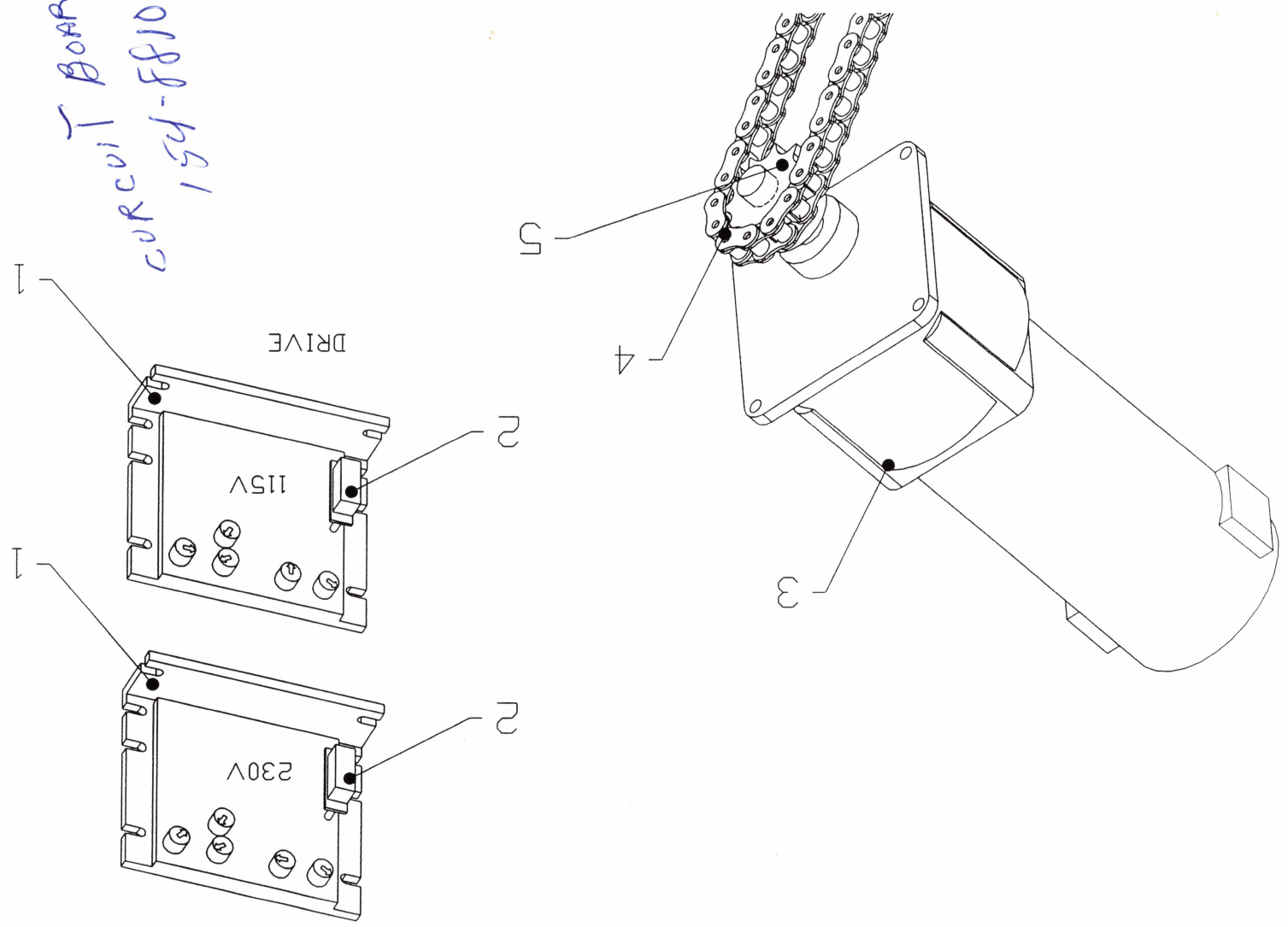


FIGURE NUMBER	INDEX NUMBER	PART NUMBER	PART NAME & DESCRIPTION
FIGURE 7 PART NUMBERS			
7	1	153-1012	SPEED CONTROL FOR DC MOTOR (KBIC-120)
7	1	153-1812	SPEED CONTROL FOR DC MOTOR (KBIC-240)
7	2	153-1015	HORSEPOWER RESISTOR (1/4 HP 0.5 OHM)
7	3	154-8865	BALDOR DC DRIVE MOTOR ASSEMBLY
7	4	153-9814	DRIVE CHAIN - (40P33)
7	5	153-9002	SPROCKET - 40B13 (5/8")

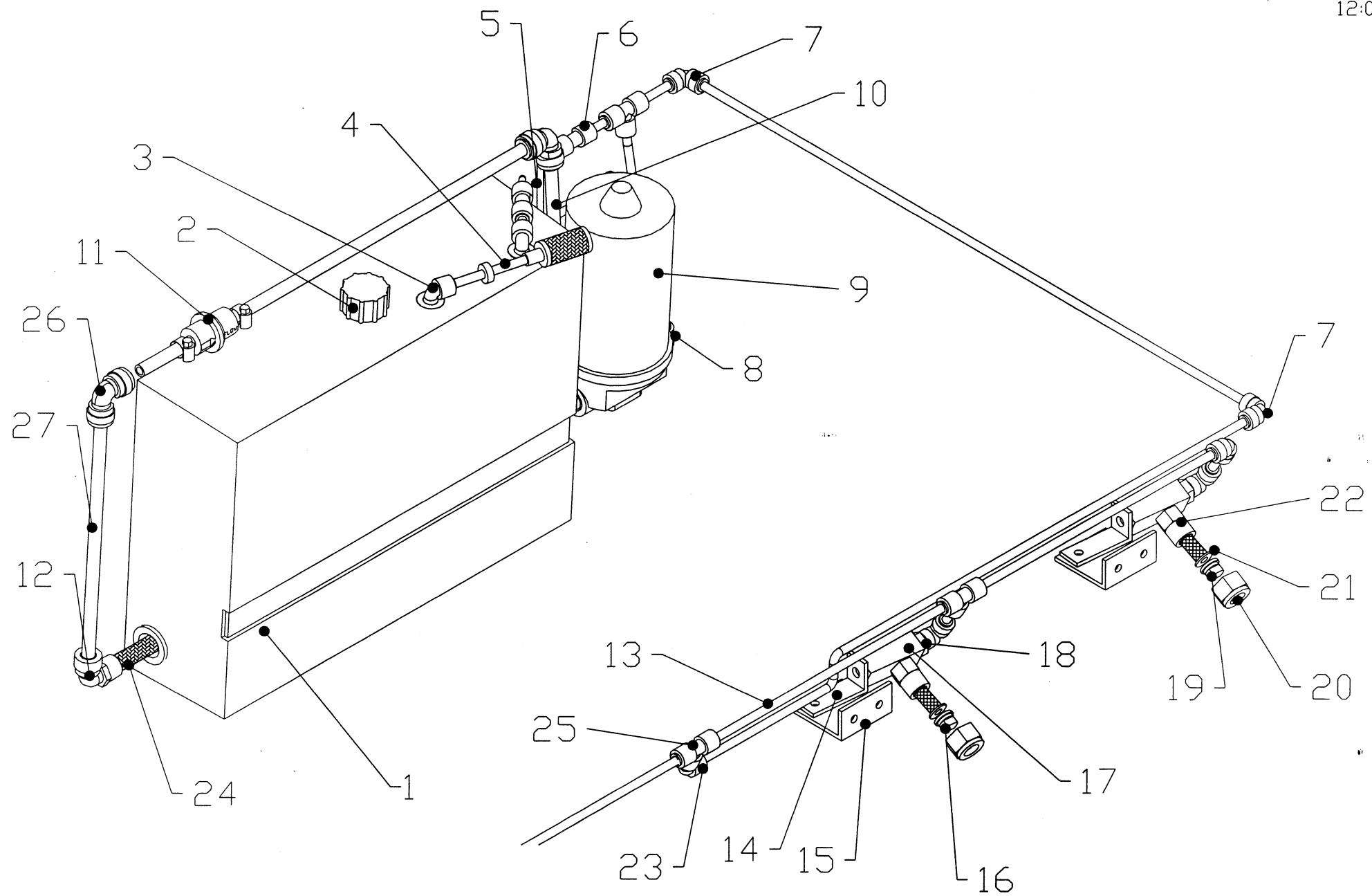


FIGURE 8



FIGURE NUMBER	INDEX NUMBER	PART NUMBER	PART NAME & DESCRIPTION
FIGURE 8 PART NUMBERS			
8	1	154-6723	CLEANER SUPPLY TANK (NO FITTINGS)
8	1	154-8840	CLEANER SUPPLY TANK (COMPLETE)
8	2	154-0832	GARDEN HOSE FITTING CAP W/ GASKET
8	3	154-0243	ELBOW (90 DEGREE) 1/4 X 1/4 (GUEST)
8	4	154-8817	MANUAL VENT VALVE ASSEMBLY
8	5	154-0202B	PENCIL TUBING STOCK-3/16" OD X 1/16" ID
8	6	154-0248	REDUCING UNION CONNECTOR-1/4" X 3/16"
8	7	154-0243	ELBOW (90 DEGREE) 1/4 X 1/4 (GUEST)
8	8	154-0412	ELBOW - 3/8 NPT X 1/4 TUBE
8	9	153-8206F	WATER PUMP-FLOJET 115V
8	9	153-8206H	WATER PUMP-FLOJET 230V
8	10	154-0803	ELBOW - 3/8 NPT X 3/8" TUBE
8	11	154-0255	IN-LINE FILTER
8	11	154-8867	IN-LINE FILTER ASSEMBLY
8	12	154-0225	ELBOW - 3/8 TUBE OD X 1/4 NPT
8	13	153-0208S	SPRAY HOSE STOCK - 1/4" OD
8	14	153-6251S	SPRAY JET SWIVEL MOUNTING ANGLE
8	15	153-6251M	SPRAY JET WALL MOUNTING ANGLE
8	16	153-0207	SPRAY TIP - STAINLESS STEEL (8003)
8	17	153-6252	SPRAY JET BODY
8	18	153-0818	MALE SWIVEL ELBOW - 1/4 TUBE-1/4 NPT
8	19	154-0007	SPRAY TIP - STAINLESS STEEL (1501)
8	20	153-0218	TIP RETAINER CAP CONNECTOR
8	21	153-0220	SCREEN CHECK VALVE (POLYPROPYLENE - 10#)
8	22	153-0217	MALE BODY (1/4 - NYLON)
8	23	154-0222	ELBOW - 1/4" STEM X 1/4" TUBING OD
8	24	154-0212B	FILTER FOR SUPPLY TANK (5" SS) PVC
8	25	153-0815	UNION TEE (1/4 X 1/4 X 1/4-QUICK DISC)
8	26	154-0256	ELBOW - 3/8 TUBE X 3/8 TUBE
8	27	154-0202	PUMP TUBING STOCK (3/8" OD X 1/4" ID)

FIGURE 8

FIGURE NUMBER	INDEX NUMBER	PART NUMBER	PART NAME & DESCRIPTION
FIGURE 8 PART NUMBERS			
8	1	154-6723	CLEANER SUPPLY TANK (NO FITTINGS)
8	1	154-8840	CLEANER SUPPLY TANK (COMPLETE)
8	2	154-0832	GARDEN HOSE FITTING CAP W/ GASKET
8	3	154-0243	ELBOW (90 DEGREE) 1/4 X 1/4 (GUEST)
8	4	154-1212	VALVE-115V AC 2-WAY (1/8" BARB)
8	4	154-1810	VENT VALVE - 230V AC 2-WAY (1/8" NPT)
8	5	154-8246	FILTER ASSEMBLY FOR VENT VALVE
8	6	154-0202B	PENCIL TUBING STOCK-3/16" OD X 1/16" ID
8	7	154-0248	REDUCING UNION CONNECTOR-1/4" X 3/16"
8	8	154-0243	ELBOW (90 DEGREE) 1/4 X 1/4 (GUEST)
8	9	154-0412	ELBOW - 3/8 NPT X 1/4 TUBE
8	10	153-8206F	WATER PUMP-FLOJET 115V
8	10	153-8206H	WATER PUMP-FLOJET 230V
8	11	154-0803	ELBOW - 3/8 NPT X 3/8" TUBE
8	12	154-0255	IN-LINE FILTER
8	12	154-8867	IN-LINE FILTER ASSEMBLY
8	13	154-0225	ELBOW - 3/8 TUBE OD X 1/4 NPT
8	14	153-0208S	SPRAY HOSE STOCK - 1/4" OD
8	15	153-6251S	SPRAY JET SWIVEL MOUNTING ANGLE.
8	16	153-6251M	SPRAY JET WALL MOUNTING ANGLE
8	17	153-0207	SPRAY TIP - STAINLESS STEEL (8003)
8	18	153-6252	SPRAY JET BODY
8	19	153-0818	MALE SWIVEL ELBOW - 1/4 TUBE-1/4 NPT
8	20	154-0007	SPRAY TIP - STAINLESS STEEL (1501)
8	21	153-0218	TIP RETAINER CAP CONNECTOR
8	22	153-0220	SCREEN CHECK VALVE (POLYPROPYLENE - 10#)
8	23	153-0217	MALE BODY (1/4 - NYLON)
8	24	154-0222	ELBOW - 1/4" STEM X 1/4" TUBING OD
8	25	154-0212B	FILTER FOR SUPPLY TANK (5" SS) PVC
8	26	153-0815	UNION TEE (1/4 X 1/4 X 1/4-QUICK DISC)
8	27	154-0256	ELBOW - 3/8 TUBE X 3/8 TUBE
8	28	154-0202	PUMP TUBING STOCK (3/8" OD X 1/4" ID)
8	29	154-0202A	PENCIL TUBING STOCK - 1/4" OD X 1/8" ID

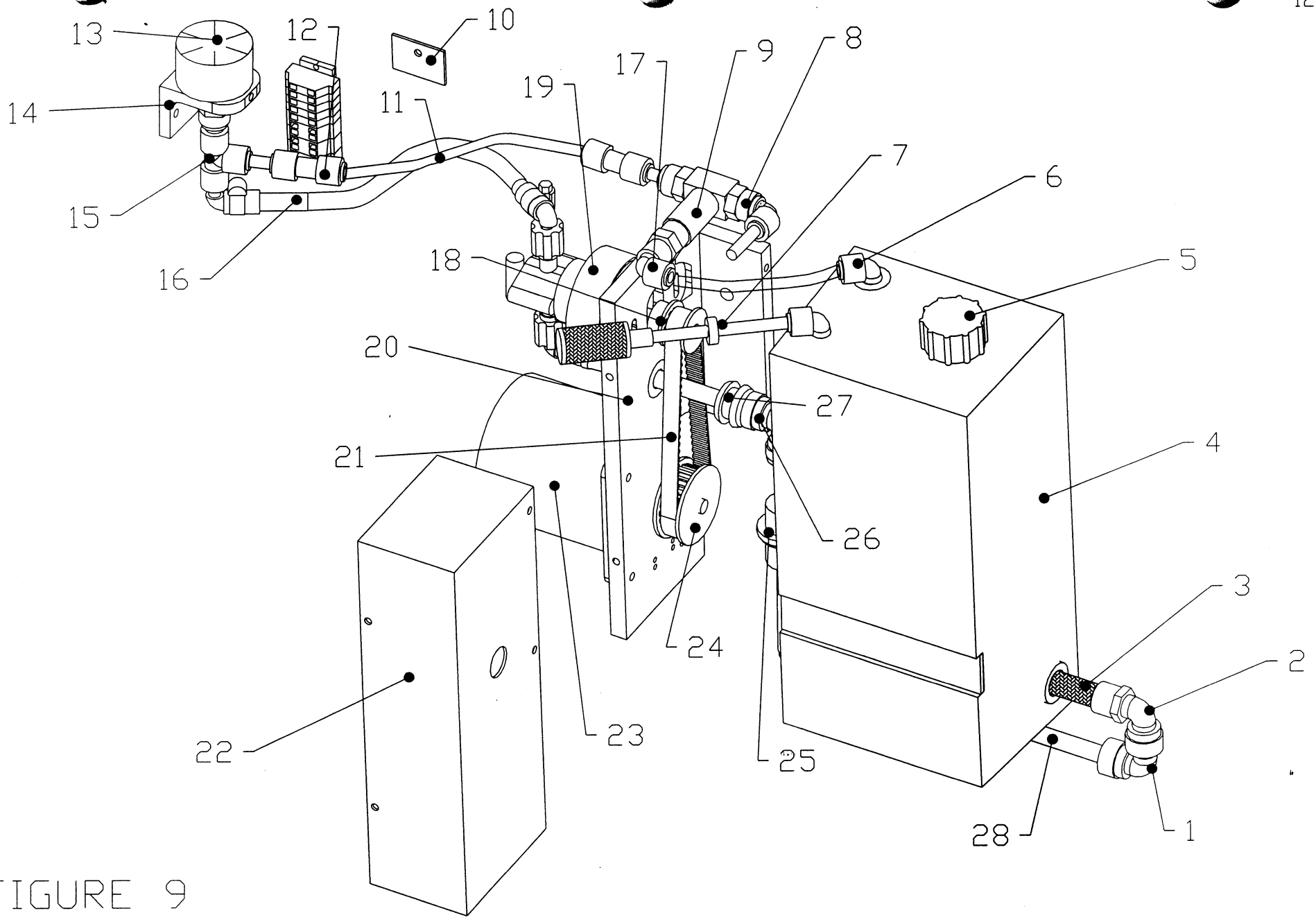


FIGURE 9

FIGURE NUMBER	INDEX NUMBER	PART NUMBER	PART NAME & DESCRIPTION
FIGURE 9 PART NUMBERS			
9	1	154-0258	ELBOW - 3/8 STEM X 3/8 TUBE
9	2	154-0225	ELBOW - 3/8 TUBE OD X 1/4 NPT
9	3	154-0212	TANK FILTER (5" SS) FOR OIL TANK
9	4	154-6726	CONDITIONER TANK (NO FITTINGS)
9	4	154-8842	CONDITIONER TANK (COMPLETE)
9	5	154-0832	GARDEN HOSE FITTING CAP W/ GASKET
9	6	154-0223	ELBOW (90 DEGREE) - 1/4 NPT X 1/4" TUBE
9	7	154-8817	MANUAL VENT VALVE ASSEMBLY
9	8	154-0224	MALE CONNECTOR - 1/4" TUBE X 1/8 NPT
9	9	154-1209	VALVE-24V DC 3-WAY (1/8" NPT)
9	10	154-0609	MAGNETIC CATCH FOR SPLASH GUARD
9	11	154-0202B	PENCIL TUBING STOCK-3/16" OD X 1/16" ID
9	12	154-0248	REDUCING UNION CONNECTOR-1/4" X 3/16"
9	13	154-1225	PRESSURE GAUGE (0-30 PSI) - 1-1/2 DIA
9	14	154-6257	MOUNTING ANGLE FOR OIL PRESSURE GAUGE
9	15	153-0815	UNION TEE (1/4 X 1/4 X 1/4-QUICK DISC)
9	16	154-8660	PULSE SUPPRESSER TUBING KIT-STD (9.25")
9	17	154-0238	SWIVEL ELBOW - 1/4" TUBE X 1/8 NPT
9	18	154-9208	PULLEY (12XL-5/16" BORE W/SET SCREW)
9	19	154-1214	FLUID METERING PUMP-0.05 ML/STROKE
9	20	154-6223A	MOUNTING ANGLE - PUMP & MOTOR (#4-LEFT)
9	21	154-9202A	BELT FOR METERING PUMP (130XL037) 60 HZ
9	21	154-9215	BELT FOR METERING PUMP (140XL037) 50 HZ
9	22	154-6287	GUARD FOR PUMP & MOTOR
9	23	154-8604	MOTOR FOR METERING PUMP 115V (#4)
9	23	154-8604E	MOTOR FOR METERING PUMP 230V
9	24	154-9607	PULLEY (24XL 5/16" BORE W/SET)
9	24	154-9614	PULLEY (30XL 5/16" BORE W/SET)
9	25	154-8267	FILTER ASSEMBLY (IN-LINE) FOR OIL SUPPLY (OPTIONAL)
9	25	154-0255	IN-LINE FILTER (OPTIONAL)
9	26	154-0256	ELBOW - 3/8 TUBE OD x 3/8 TUBE
9	27	154-0218	GROMMET - 7/16 X 11/16 (1/4" PANEL)
9	28	154-0202	PUMP TUBING STOCK (3/8" OD X 1/4" ID)

FIGURE 10

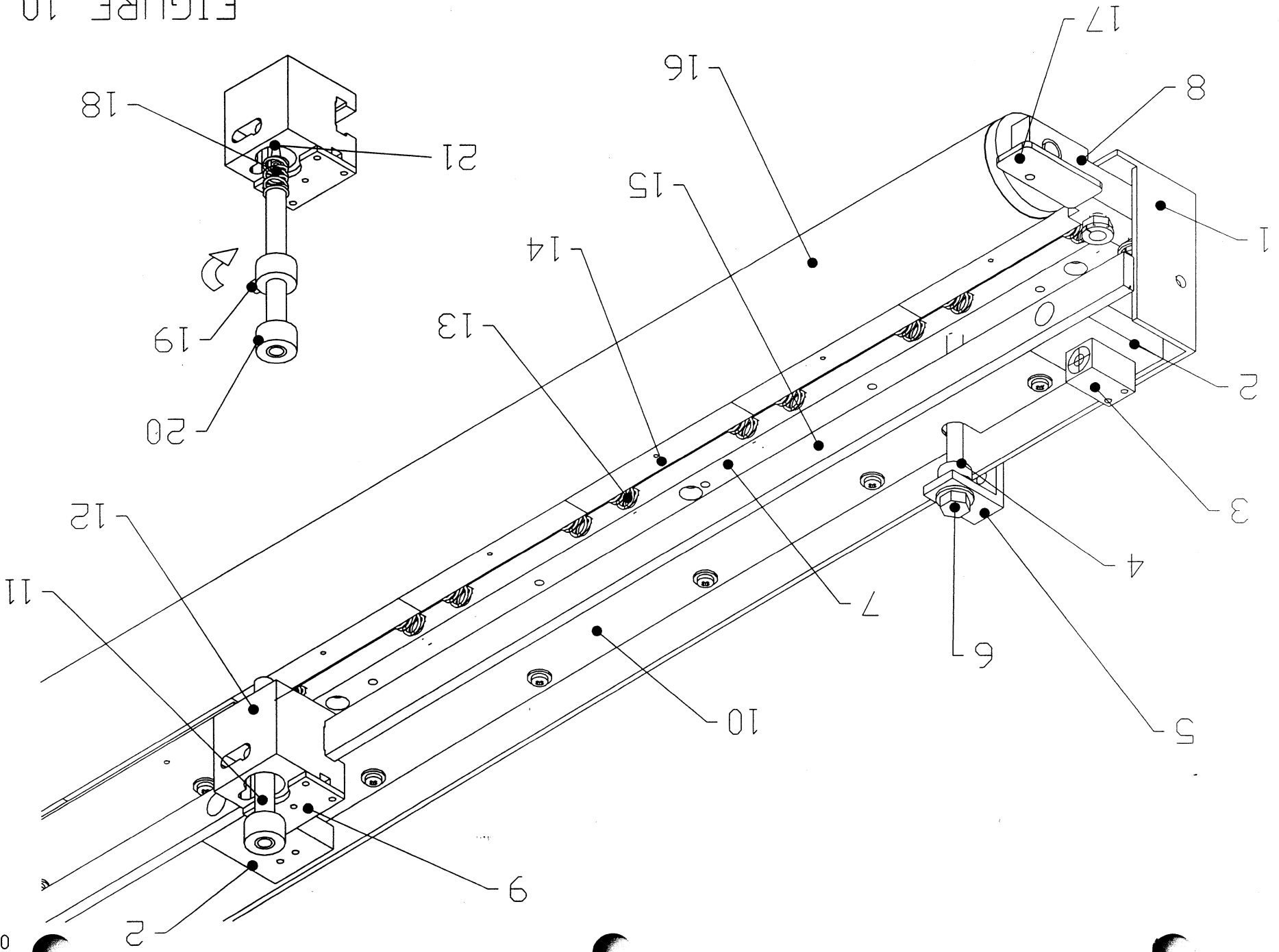


FIGURE NUMBER	INDEX NUMBER	PART NUMBER	PART NAME & DESCRIPTION
FIGURE 10 PART NUMBERS			
10	1	154-6823	SMOOTHER MOUNTING ANGLE
10	2	154-6825	HEAD MOUNT BAR (NYLON)
10	3	154-1220	INDUCTIVE PROXIMITY SENSOR (TL-Q5MC1)
10	4	153-2704	STEEL COLLAR - 5/16 X 3/8
10	5	154-6626	TRANSFER ASSEMBLY ADJUSTMENT ANGLE
10	6	153-2737	HHCS - 5/16-18 X 4
10	7	154-6622	BRUSH PAD BASE BLOCK
10	8	154-8609	TRANSFER ROLLER MOUNTING ARM (LEFT)
10	8	154-8610	RIGHT TRANSFER ROLLER MOUNTING ARM (NOT SHOWN)
10	9	154-6646	HEAD BELT MOUNT PLATE
10	10	154-6815	BRUSH PAD TOP PLATE
10	11	154-6696	TIP AND HOSE HOLDER
10	12	154-6672A	SLIDING HEAD
10	13	153-2540A	SPRING FOR WIPING PAD (1-3/4")
10	14	154-8617	PATTERN SMOOTHING PAD ASSEMBLY
10	15	154-6647A	SLIDING HEAD BAR
10	16	154-8608	TRANSFER ROLLER ASSEMBLY
10	17	154-8627	FELT DRIP PAD - LEFT SIDE
10	17	154-8628	FELT DRIP PAD - RIGHT SIDE (NOT SHOWN)
10	18	153-2713	SPRING - OIL TIP RETAINER
10	19	153-2051	SET SCREW - 1/4-20 X 1/2
10	20	153-2804	COLLAR - 3/8 X 3/4 X 3/8
10	21	154-6832	OIL PENCIL TIP - ALUMINUM

FIGURE 11

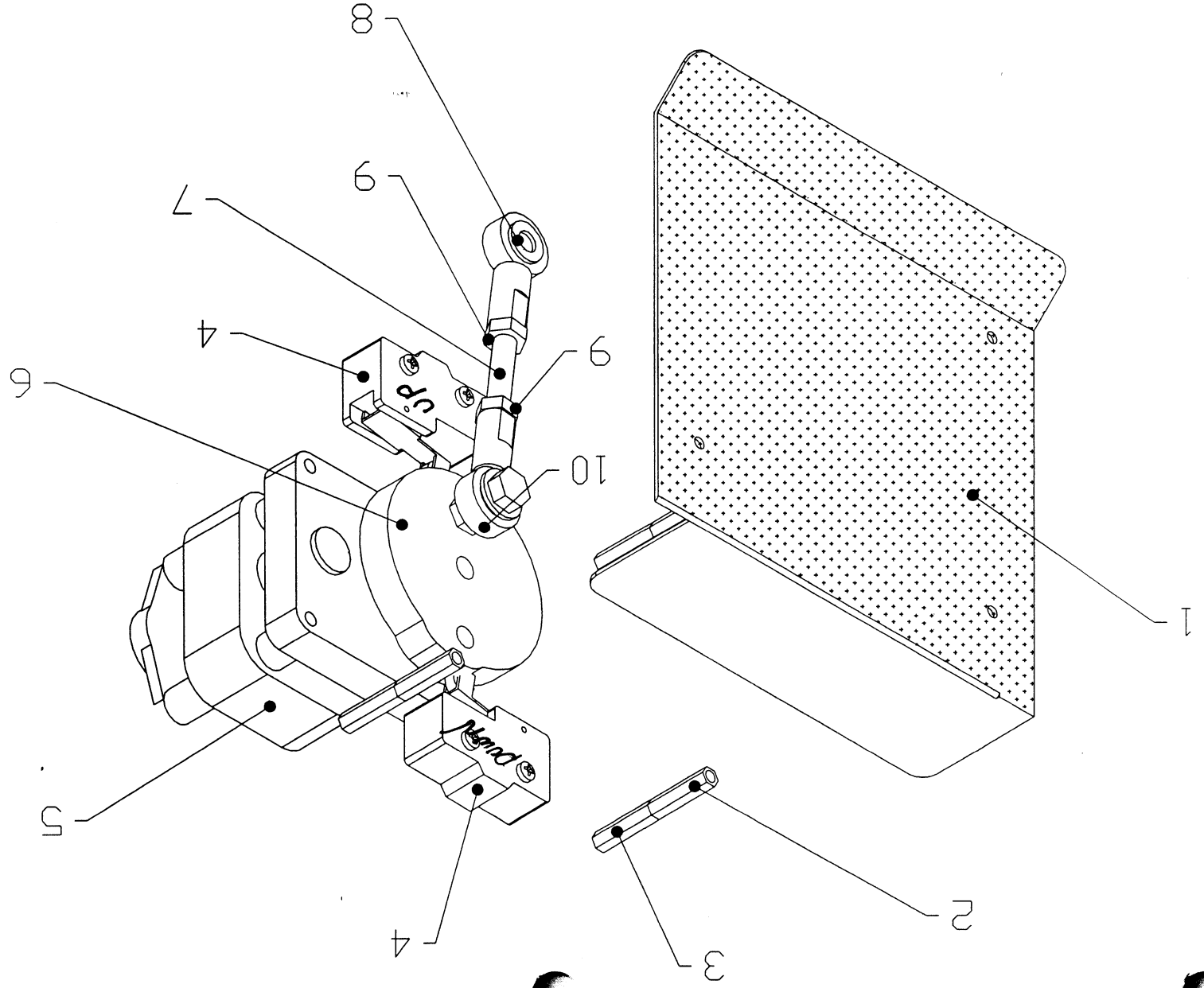


FIGURE NUMBER	INDEX NUMBER	PART NUMBER	PART NAME & DESCRIPTION
FIGURE 11 PART NUMBERS			
11	1	154-8607	GUARD FOR SQUEEGEE & DUSTER SWITCH-FELT
11	2	153-2530	STANDOFF FASTENER-8-32 X 1 (M/F)
11	3	153-2532	STANDOFF FASTENER-8-32 X 1 (F/F)
11	4	154-1015	MICROSWITCH WITH ROLLER
11	5	153-8207	BRAKE MOTOR ASSEMBLY (25 RPM-115 VOLT)
11	5	153-8807H	BRAKE MOTOR ASSEMBLY (25 RPM-230V 50 Hz)
11	6	154-6670	SQUEEGEE CAM
11	7	154-8646	5/16-24 X 3 ALLTHREAD (SQUEEGEE PIVOT)
11	8	153-0211	SQUEEGEE ROD END WITH FITTING (ON MOTOR)
11	9	153-2214	JAM NUT - 5/16-24
11	10	153-0211	SQUEEGEE ROD END WITH FITTING (ON MOTOR)

RIGHT SIDE

LEFT SIDE

03:01

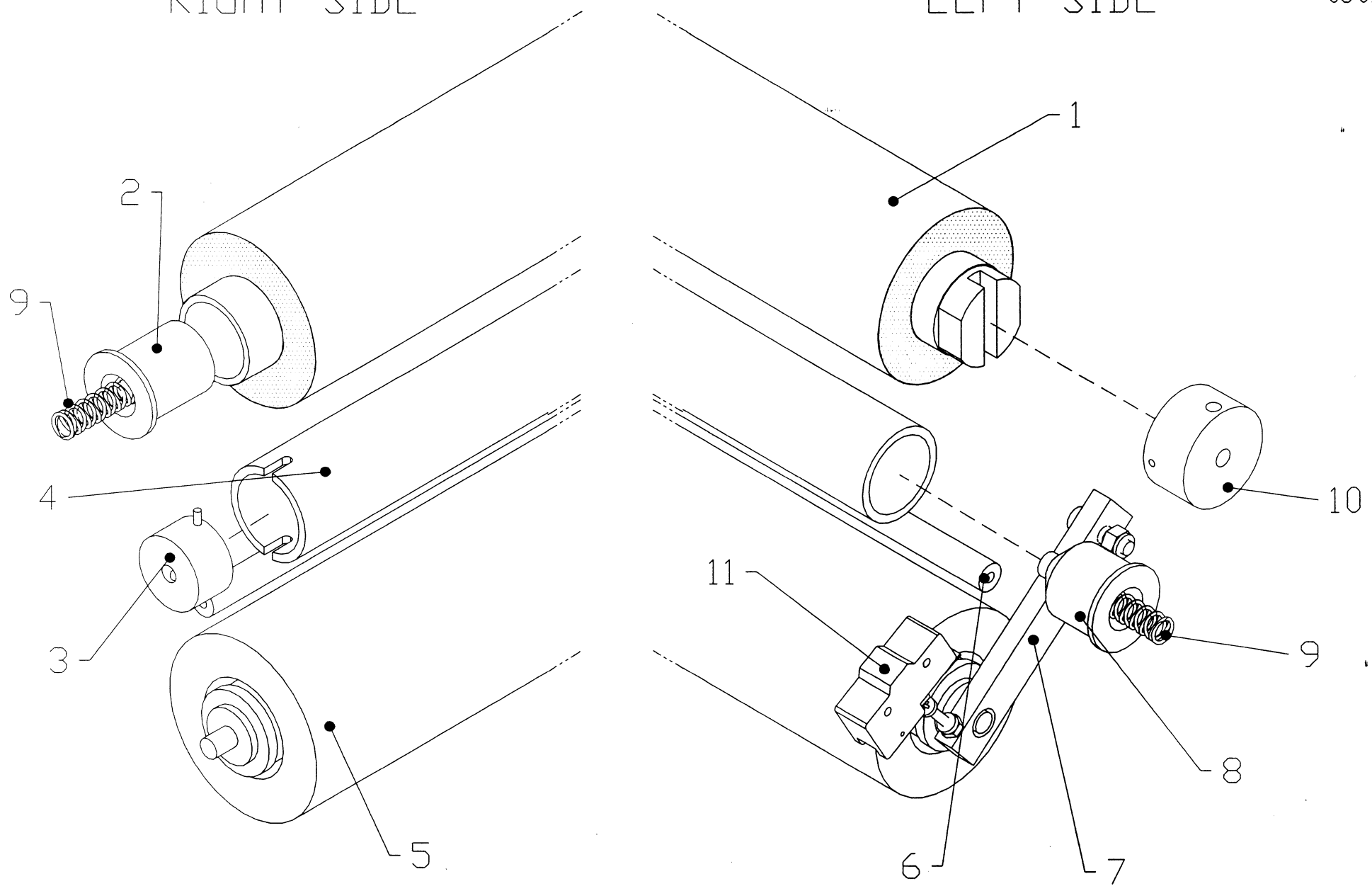


FIGURE 12

FIGURE NUMBER	INDEX NUMBER	PART NUMBER	PART NAME & DESCRIPTION
FIGURE 12 PART NUMBERS			
12	1		DUSTER CLOTH
12	2	153-6850	UHMW DUSTER PLUG FOR CARDBOARD CORE
12	3	153-8202B	DUSTER SOLID DRIVE HUB (PVC-1/4-28)
12	4	153-8824	PVC TAKE-UP REEL ASSEMBLY (44-3/4")
12	5	153-8838	CUSHION ROLLER WITH STEMS (STEEL=44-3/8)
12	6	153-6825	DUSTER CLOTH ROUTING BAR (SS)
12	7	153-8420	CUSHION ROLLER PIVOT ARM ASSEMBLY
12	8	153-6853	UHMW DUSTER PLUG FOR PVC TAKE-UP REEL
12	9	153-2808	SPRING - 0.42 OD X 1.25 (DUSTER PLUG)
12	10	153-8201B	DUSTER DRIVE HUB ASSEMBLY (1/4-28)
12	11	154-1603	MICROSWITCH-WITHOUT ROLLER (LARGE)

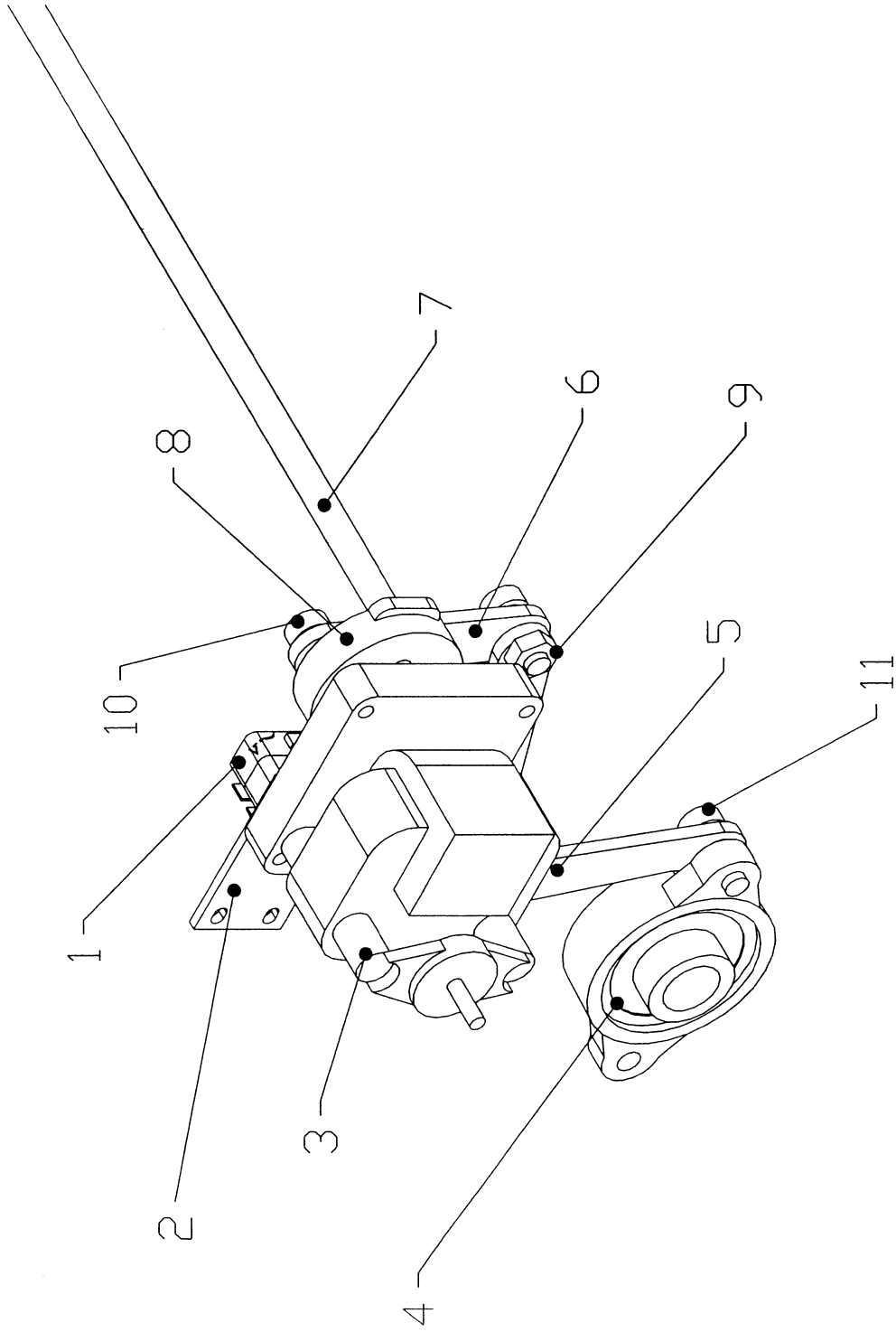


FIGURE 13

FIGURE NUMBER	INDEX NUMBER	PART NUMBER	PART NAME & DESCRIPTION
FIGURE 13 PART NUMBERS			
13	1	153-1203	MICROSWITCH-WITH ROLLER (SQUEEGEE/BRUSH)
13	2	154-6824	BRUSH CAM SWITCH PLATE
13	3	153-8207	BRAKE MOTOR ASSEMBLY (25 RPM-115 VOLT)
13	3	153-8807H	BRAKE MOTOR ASSEMBLY (25 RPM-230V 50 Hz)
13	4	154-8640	FLANGED BEARING-STD BRUSH (3/4" ROTATED)
13	5	154-8638	BUFFER BRUSH LIFTING LINK - LEFT
13	5	154-8639	BUFFER BRUSH LIFTING LINK - RIGHT (NOT SHOWN)
13	6	154-8837	CAM TO BRUSH LIFTING ROD LINK ASSEMBLY
13	7	154-8637	BUFFER BRUSH LIFTING ASSEMBLY
13	8	154-6243	MOTOR CAM-DUAL LOBES (STACKED SWITCHES)
13	9	153-2027A	JAM NUT - 5/16-18
13	10	153-2801	SHOULDER BOLT-3/8 X 3/8 (5/16-18)
13	11	153-2801A	SHOULDER BOLT-3/8 X 3/8-CUT (5/16-18)

FIGURE NUMBER	INDEX NUMBER	PART NUMBER	PART NAME & DESCRIPTION	QUANTITY NEEDED
1	1	154-8818	SPLASH GUARD ASSEMBLY	1
			ATTACHING PARTS	
		153-2004	FLAT WASHER - 1/4	2
		153-2014	LOCK WASHER - 1/4	2
		153-2603	HHCS - 1/4-20 X 3/4	2
1	2	154-1250	EMERGENCY STOP CIRCUIT BREAKER ASSEMBLY	1
			ATTACHING PARTS	
		153-2001	FLAT WASHER - #6	2
		153-2018	LOCKNUT - 6-32 (NYLOK)	2
		153-2084	MS PHILLIPS - 6-32 X 1	2
1	3	154-8806	KEYPAD ASSY	1
			ATTACHING PARTS	
		154-0801	KEYBOARD DECAL - KUSTODIAN	1
1	4	154-1225	PRESSURE GAUGE (0-30 PSI) - 1-1/2 DIA	1
			USE TEFLON TAPE	
			ATTACHING PARTS	
		154-0257	FEMALE CONNECTOR - 1/4" TUBE x 1/8 FPT	1
1	5	154-8823	LANE TO LANE HANDLE ASSEMBLY	1
			ATTACHING PARTS	
		153-2006	FLAT WASHER - 3/8	4
		153-2027	JAM NUT - 3/8-16	2
		153-2815	HHCS - 3/8-16 X 2-1/4 (GRADE 8)	2
		153-6851	UHMW HANDLE SPACER	2
1	6	154-8805	VACUUM MOTOR ASSEMBLY	1
		154-8805E	VACUUM MOTOR ASSEMBLY	1
1	7	154-8206	TRANSFER ROLLER MOTOR - 25 RPM (115V)	1 on 115V
		154-8206A	TRANSFER ROLLER MOTOR - 25 RPM (230V)	1 on 230V
			ATTACHING PARTS	
		153-2002	FLAT WASHER - #8	8
		153-2019	LOCKNUT - 8-32 (NYLOK)	4
		153-2816	MS PHILLIPS - 8-32 X 2 (SS)	4
1	8	154-8625	VACUUM MOTOR HOUSING - ALUMINUM	1
			ATTACHING PARTS	
		153-2004	FLAT WASHER - 1/4	4
		153-2014	LOCK WASHER - 1/4	2
		153-2023	HEX NUT - 1/4-20	2
		153-2052	HHCS - 1/4-20 X 7/8	2
1	9	154-0260	FLEXIBLE VACUUM HOSE STOCK (1-1/2" ID)	INCH
1	10	153-8827T	1-1/4 PVC ELBOW-TANK INLET (NO THREADS)	2
1	11	153-6850	UHMW DUSTER PLUG FOR CARDBOARD CORE	1
			ATTACHING PARTS	
		153-2005	FLAT WASHER - 5/16	1
		153-2020A	LOCKNUT - 1/4-20 (STOVER)	1
		153-2807	SHOULDER BOLT - 5/16 X 2 (1/4-20) DUSTER PLUG	1
		153-2808	SPRING - 0.42 OD X 1.25 (DUSTER PLUG)	1
1	12	153-8202B	DUSTER SOLID DRIVE HUB (PVC-1/4-28)	1
			ATTACHING PARTS	
		153-2050	SET SCREW - 1/4-28 X 3/8	1
1	13	154-8804	MAIN DRIVE SHAFT GUARD ASSEMBLY	1
			ATTACHING PARTS	
		153-2006	FLAT WASHER - 3/8	10
1	14	153-6437	PUSH BUTTON MOUNTING PLATE	1
			ATTACHING PARTS	
		153-2013	#10 LOCK WASHER	2
		153-2086A	MS PHILLIPS - 8-32 X 3/8	2

FIGURE NUMBER	INDEX NUMBER	PART NUMBER	PART NAME & DESCRIPTION	QUANTITY NEEDED
1	15	153-1209	BUTTON GUARD	1
1	16	154-8683	POLYETHYLENE RECOVERY TANK ASSEMBLY (2002)	1
			ATTACHING PARTS	
		153-2406	HOSE CLAMP (1-1/2")	1
		153-8827	1-1/4 PVC ELBOW FOR RECOVERY TANK INLET (NO THREADS)	1
		154-0260	FLEXIBLE HOSE STOCK FOR VACUUM (1-1/2" ID)	28"
1	17	153-8311	MOMENTARY WHEEL ASSEMBLY (URETHANE)	2
			ATTACHING PARTS	
		153-2049	SET SCREW - 8-32 X 3/16	1
		153-6006	MOMENTARY LANE ROLER SHAFT	1
1	18	153-6029	MOMENTARY WHEEL HOUSING	2
			ATTACHING PARTS	
		153-2005	FLAT WASHER - 5/16	4
		153-2015	LOCK WASHER - 5/16	2
		153-2024	HEX NUT - 5/16-18	2
		153-2061	HHCS - 5/16-18 X 1	2
1	19	154-8616A	BUFFER MOTOR ASSEMBLY (115V-AC ONLY)	1 on 115V
		154-8616E	BUFFER MOTOR ASSEMBLY (230V-AC ONLY)	1 on 230V
			ATTACHING PARTS	
		153-2006	FLAT WASHER - 3/8	4
		153-2016	LOCK WASHER - 3/8	4
		153-2066	HHCS - 3/8-16 X 1	4
1	20	153-0001	TRANSPORT CASTER (3" DUAL WHEEL)	4
			ATTACHING PARTS	
		153-2007	FLAT WASHER - 1/2	2
		153-2017	LOCK WASHER - 1/2	1
		153-2026	HEX NUT - 1/2-13	1
		153-2073A	HHCS - 1/2-13 X 1-1/2	1
1	21	154-8624	PUSH BUTTON REPLACEMENT HARNESS	1
			ATTACHING PARTS	
		153-1209	BUTTON GUARD	1
2	1	153-7002AA	LANE DISTANCE COUNTER WHEEL-TREADED (2")	2
			ATTACHING PARTS	
		153-2050	SET SCREW - 1/4-28 X 3/8	2
2	2	154-8619	PILLOWBLOCK-LANE DISTANCE (LEFT-FLANGED)	1
			ATTACHING PARTS	
		153-2005	FLAT WASHER - 5/16	2
		153-2015	LOCK WASHER - 5/16	2
		153-2602	HHCS - 5/16-18 X 3/4	2
2	3	154-6664	BUFFER BRUSH PULLEY SPACER-STANDARD	1
2	4	153-9803	FLANGED BUSHING (3/8 X 1/2 X 1/4)	4
2	5	154-6652	GUIDE ROLLER MOUNT BLOCK	4
			ATTACHING PARTS	
		153-2005	FLAT WASHER - 5/16	2
		153-2015	LOCK WASHER - 5/16	2
		153-2061	HHCS - 5/16-18 X 1	2
2	6	153-8410	LANE EDGE GUIDE ROLLER W/BUSHING (1/2")	4
			ATTACHING PARTS	
		153-2006	FLAT WASHER - 3/8	1
		153-2401	SPRING - 0.54 OD X 0.75 (GUIDE ROLLER)	1
		153-2527	SHOULDER BOLT - 3/8 X 2-1/4 (5/16-18) GUIDE ROLLER	1
2	7	154-6820	MAIN DRIVE SHAFT	1
			ATTACHING PARTS	
		153-2036	SNAP RING - 5/8	3
		153-0043	THICK FELT WASHER - 5/8	3

FIGURE NUMBER	INDEX NUMBER	PART NUMBER	PART NAME & DESCRIPTION	QUANTITY NEEDED
2	8	154-8803	DRIVE SHAFT PILLOWBLOCK	2
			ATTACHING PARTS	
		153-2006	FLAT WASHER - 3/8	2
		153-2016	LOCK WASHER - 3/8	2
		153-2066	HHCS - 3/8-16 X 1	2
2	9	153-8838	CUSHION ROLLER ASSEMBLY WITH STEMS	1
2	10	153-0202	COMPLETE SQUEEGEE ASSEMBLY (2-PIECE BLUE)	1
			ATTACHING PARTS	
		153-2004	FLAT WASHER - 1/4	2
		153-2014	LOCK WASHER - 1/4	2
		153-2023	HEX NUT - 1/4-20	2
2	11	154-0810	LIFTING HANDLE (SS SPRING-LOADED CHEST)	2
			ATTACHING PARTS	
		153-2003	FLAT WASHER - # 10	3
		153-2208	LOCK NUT - 10-24 NYLOCK	3
		153-2301	MS PHILLIPS - 10-24 X 5/8	3
2	12	154-6817	SQUEEGEE MOUNT ANGLE	1
			ATTACHING PARTS	
		153-2005	FLAT WASHER - 5/16	2
		153-2027A	JAM NUT - 5/16-18	2
		153-2062	HHCS - 5/16-18 X 1-1/4	2
		153-2303	SHOULDER BOLT - 3/8 X 5/8 (5/16-18) SQ PIVOT	2
2	13	153-7013	URETHANE-BLEND LANE DRIVE WHEEL (4")	2
			ATTACHING PARTS	
		153-2819	SET SCREW - 5/16-24 X 3/8	2
2	14	154-8007	SIDE PLATE PILLOWBLOCK FOR DRIVE SHAF1	2
			ATTACHING PARTS	
		153-2006	FLAT WASHER - 3/8	6
		153-2015	LOCK WASHER - 3/8	4
		153-2024	HEX NUT - 3/8-16	4
		153-2068	HHCS - 3/8-16 X 1-1/2	2
		153-2805A	FHSS - 3/8-16 X 1-1/2	2
2	15	153-2401	SPRING - 0.54 OD X 0.75 (GUIDE ROLLER)	4
2	16	154-6651	FRONT GUIDE ROLLER MOUNT	2
			ATTACHING PARTS	
		153-2004	FLAT WASHER - 1/4	2
		153-2014	LOCK WASHER - 1/4	2
		153-2023	HEX NUT - 1/4-20	2
		153-2706	CARRIAGE BOLT - 1/4-20 X 1	2
2	17	154-6833	SKID GUIDES	2
			ATTACHING PARTS	
		153-2004	FLAT WASHER - 1/4	4
		153-2014	LOCK WASHER - 1/4	2
		153-2023	HEX NUT - 1/4-20	2
		153-2053A	BHSS - 1/4-20 X 1	2
2	18	154-8640	FLANGED BEARING FOR BUFFER BRUSH (3/4" ROTATED)	2
			ATTACHING PARTS	
		153-2009	NYLON FLAT WASHER (3/8 - 0.060)	1
		153-2801	SHOULDER BOLT - 3/8 X 3/8 (5/16-18) BRUSH LIFT	1
2	19	154-6042	UHMW WHEEL - CORNER GUARD	2
			ATTACHING PARTS	
		153-2004	FLAT WASHER - 1/4	2
		153-2014	LOCK WASHER - 1/4	1
		153-2023	HEX NUT - 1/4-20	1
		153-2053	HHCS - 1/4-20 X 1	1
2	20	154-6821	LDS SHAFT	1

FIGURE NUMBER	INDEX NUMBER	PART NUMBER	PART NAME & DESCRIPTION	QUANTITY NEEDED	
2	21	154-8641	BUFFER BRUSH ASSEMBLY	1	
		<i>ATTACHING PARTS</i>			
		153-2707	SHCS - 5/16-24 X 3/4	1	
		153-2711	FENDER WASHER - 5/16	1	
		154-8640	FLANGED BEARING FOR BUFFER BRUSH (3/4" ROTATED)	2	
2	22	153-0202B	REPLACEMENT SQUEEGEE BLADE-BLUE STOCK	1 PAIR	
3	1	153-0812	TRANSPORT CASTER - HEAVY DUTY (2" DUAL WHEEL	4	
		<i>ATTACHING PARTS</i>			
		153-2006	FLAT WASHER - 3/8	2	
		153-2016	LOCK WASHER - 3/8	1	
		153-2025	HEX NUT - 3/8-16	1	
		153-2067	HHCS - 3/8-16 X 1-1/4	1	
3	2	153-6412	DUSTER MOTOR SHIELD (7 RPM)	2	
		<i>ATTACHING PARTS</i>			
		153-2013	LOCK WASHER - #10	2	
		153-2113	MS PHILLIPS - 8-32 X 3/8 (SELF TAP)	2	
		153-6412C	COVER FOR DUSTER MOTOR SHIELD	1	
3	3	154-6627	SIDE LIFT HANDLE	2	
		<i>ATTACHING PARTS</i>			
		153-2005	FLAT WASHER - 5/16	2	
		153-2015	LOCK WASHER - 5/16	2	
		153-2061	HHCS - 5/16-18 X 1	2	
3	4	154-6628	CASTER/HANDLE MOUNT ANGLE	2	
		<i>ATTACHING PARTS</i>			
		153-2006	FLAT WASHER - 3/8	4	
		153-2016	LOCK WASHER - 3/8	2	
		153-2025	HEX NUT - 3/8-16	2	
3	5	154-8802	SQUEEGEE ADJUSTMENT ARM - RIGHT	1	
		<i>ATTACHING PARTS</i>			
		153-2004	FLAT WASHER - 1/4	2	
		153-2014	LOCK WASHER - 1/4	2	
		153-2023	HEX NUT - 1/4-20	2	
		153-2079	FHMS - 1/4-20 X 1	2	
3	6	153-8403	COIL-BRAKE MOTOR ASSEMBLY (7 RPM-115 VOLT	2 on 115V	
		153-8803H	COIL-BRAKE MOTOR ASSEMBLY (7 RPM-230V 50 Hz	2 on 230V	
		<i>ATTACHING PARTS</i>			
		153-2003	FLAT WASHER - #10	4	
		153-2013	LOCK WASHER - #10	4	
		153-2091	MS PHILLIPS - 10-32 X 3/4	3	
		153-2604	MS FLAT PHILLIPS - 10-32 X 1/2	1	
3	7	154-6629	SIDE LIFT HANDLE MOUNT	2	
		<i>ATTACHING PARTS</i>			
		153-2006	FLAT WASHER - 3/8	2	
		153-2016	LOCK WASHER - 3/8	2	
		153-2066	HHCS - 3/8-16 X 1	2	
3	8	153-8827T	1-1/4 PVC ELBOW-TANK INLET (NO THREADS	2	
		<i>FOR ATTACHING PARTS SEE FIG. 1:6</i>			
3	9	154-0260	FLEXIBLE HOSE STOCK FOR VACUUM (1-1/2" ID)	6-1/8"	
3	10	153-8207	BRAKE MOTOR ASSEMBLY (25 RPM-115 VOLT	2 on 115V	
3	10	153-8807H	BRAKE MOTOR ASSEMBLY (25 RPM-230V 50 Hz	2 on 230V	
		<i>ATTACHING PARTS</i>			
		153-2604	MS FLAT PHILLIPS - 10-32 X 1/2	4	

FIGURE NUMBER	INDEX NUMBER	PART NUMBER	PART NAME & DESCRIPTION	QUANTITY NEEDED	
3	11	154-8607	SQUEEGEE & DUSTER SWITCH GUARD(WITH FELT	1	
		<i>ATTACHING PARTS</i>			
		153-2002	FLAT WASHER - #8		6
		153-2086	MS PHILLIPS - 8-32 X 5/8		6
		153-2530	STANDOFF FASTENER - 8-32 X 1 (MALE/FEMALE) STEEL		3
		153-2532	STANDOFF FASTENER - 8-32 X 1 (FEMALE/FEMALE) ALUMINUM	3	
3	12	154-6698	LID MOUNT PLATE	2	
		<i>ATTACHING PARTS</i>			
		153-2019	LOCKNUT - 8-32 (NYLOK)		2
		153-2086	MS PHILLIPS - 8-32 X 5/8	2	
3	13	154-9201	BELT FOR HEAD DRIVE (XL025 - 9 FEET)	1	
3	14	154-8823	LANE TO LANE HANDLE ASSEMBLY	1	
		<i>ATTACHING PARTS</i>			
		153-2006	FLAT WASHER - 3/8		4
		153-2027	JAM NUT - 3/8-16		4
		153-2815	HHCS - 3/8-16 X 2-1/4 (GRADE 8)		2
		153-6851	UHMW HANDLE SPACER	2	
3	15	154-6041	UHMW HANDLE STOP	2	
		<i>ATTACHING PARTS</i>			
		153-2004	FLAT WASHER - 1/4		4
		153-2014	LOCK WASHER - 1/4		2
		153-2023	HEX NUT - 1/4-20		2
		153-2053A	BHSS - 1/4-20 X 1	2	
3	16	153-6851	UHMW HANDLE SPACER	2	
3	17	153-2818	HHCS - 3/8-16 X 2-1/2 (GRADE 8)	2	
		<i>ATTACHING PARTS</i>			
		153-2006	FLAT WASHER - 3/8		2
		153-2016	LOCK WASHER - 3/8		1
		153-2025	HEX NUT - 3/8-16		1
		153-2027	JAM NUT - 3/8-16	1	
3	18	153-0001	TRANSPORT CASTER (3" DUAL WHEEL	4	
		<i>FOR ATTACHING PARTS SEE FIG. 1:2C</i>			
3	19	154-6221	MOUNTING ANGLE - HEAVY DUTY CASTER (3 x 3.625	2	
		<i>ATTACHING PARTS</i>			
		153-2006	FLAT WASHER - 3/8		4
		153-2016	LOCK WASHER - 3/8		2
		153-2025	HEX NUT - 3/8-16		2
		153-2067	HHCS - 3/8-16 X 1-1/4	2	
3	20	154-6042	UHMW WHEEL - CORNER GUARD	2	
		<i>FOR ATTACHING PARTS SEE FIG. 2:1E</i>			
3	21	154-9204	PULLEY - HEAD IDLER (32XL-1/4" BORE-W/SET	1	
		<i>ATTACHING PARTS</i>			
		154-6665	HEAD TIMING SHAFT - SANCTION STANDARD	1	
3	22	154-8643	HEAD IDLER PULLEY MOUNT	1	
		<i>ATTACHING PARTS</i>			
		153-2005	FLAT WASHER - 5/16		8
		153-2015	LOCK WASHER - 5/16		6
		153-2024	HEX NUT - 5/16-18		6
		153-2027A	JAM NUT - 5/16-18		2
		153-2502	FHMS - 5/16-18 X 5	2	
3	23	154-8640	FLANGED BEARING-STD BRUSH (3/4" ROTATED	2	
		<i>FOR ATTACHING PARTS SEE FIG 2:2C</i>			

FIGURE NUMBER	INDEX NUMBER	PART NUMBER	PART NAME & DESCRIPTION	QUANTITY NEEDED	
3	24	154-6818	HEAD SENSOR GUARD	1	
		<i>ATTACHING PARTS</i>			
		153-2013	LOCK WASHER - #10	1	
		153-2015	LOCK WASHER - 5/16	2	
		153-2113	MS PHILLIPS - 8-32 X 3/8 (SELF TAP)	1	
		153-2512	ACORN NUT - 5/16-18	2	
3	25	154-6829	MOUNTING PLATE - HEAD TIMING SENSORS	1	
		<i>ATTACHING PARTS</i>			
		153-2202	FHMS - 8-32 X 3/8	2	
3	26	154-6831	6-TOOTH SENSOR DISK - ALUMINUM	1	
		<i>ATTACHING PARTS</i>			
		153-2050	SET SCREW - 1/4-28 X 3/8	1	
3	27	154-1220	INDUCTIVE PROXIMITY SENSOR (TL-Q5MC1)	1	
		<i>ATTACHING PARTS</i>			
		153-2231	LOCK NUT - 4-40 NYLOCK	2	
		153-2505	MS PHILLIPS - 4-40 X 1	2	
3	28	154-9602	TRANSFER DRIVE CHAIN (25P51)	1	
		<i>ATTACHING PARTS</i>			
		153-9045	25 MASTER LINK	1	
3	29	153-9010	SPROCKET - 25B15 (TRANSFER DRIVE & LDS - 3/8")	2	
4	1	153-0812	TRANSPORT CASTER - HEAVY DUTY (2" DUAL WHEEL)	4	
		<i>ATTACHING PARTS</i>			
		153-2006	FLAT WASHER - 3/8	2	
		153-2016	LOCK WASHER - 3/8	1	
		153-2025	HEX NUT - 3/8-16	1	
		153-2067	HHCS - 3/8-16 X 1-1/4	1	
4	2	154-6221	MOUNTING ANGLE - HEAVY DUTY CASTER (3 x 3.625)	2	
<i>FOR ATTACHING PARTS SEE FIG. 3:15</i>					
4	3	153-0001	TRANSPORT CASTER (3" DUAL WHEEL)	4	
		<i>FOR ATTACHING PARTS SEE FIG. 1:20</i>			
4	4	153-8207	BRAKE MOTOR ASSEMBLY (25 RPM-115 VOLT)	2 on 115V	
4	4	153-8807H	BRAKE MOTOR ASSEMBLY (25 RPM-230V 50 Hz)	2 on 230V	
<i>ATTACHING PARTS</i>					
		153-2604	MS FLAT PHILLIPS - 10-32 X 1/2	4	
4	5	154-1206	GEAR BOX FOR HEAD DRIVE MOTOR	1	
4	6	153-2818	HHCS - 3/8-16 X 2-1/2 (GRADE 8)	2	
		<i>FOR ATTACHING PARTS SEE FIG. 3:17</i>			
4	7	153-6851	UHMW HANDLE SPACER	2	
4	8	154-8823	LANE TO LANE HANDLE ASSEMBLY	1	
		<i>FOR ATTACHING PARTS SEE FIG. 3:14</i>			
4	9	154-6041	UHMW HANDLE STOP	2	
		<i>FOR ATTACHING PARTS SEE FIG. 3:15</i>			
4	10	154-9201	BELT FOR HEAD DRIVE (XL025 - 9 FEET)	1	
4	11	154-6222	MOUNTING ANGLE - HEAD DRIVE MOTOR	1	
		<i>ATTACHING PARTS</i>			
		153-2004	FLAT WASHER - 1/4	2	
		153-2014	LOCK WASHER - 1/4	2	
		153-2052	HHCS - 1/4-20 X 7/8	2	
4	12	154-8232	HEAD DRIVE MOTOR - 115V (NO GEARBOX)	1 on 115V	
4	12	154-8632	HEAD DRIVE MOTOR-230V STD (NO GEARBOX)	1 on 230V	

FIGURE NUMBER	INDEX NUMBER	PART NUMBER	PART NAME & DESCRIPTION	QUANTITY NEEDED
4	13	154-1208	MOTOR CAPACITOR (6.0 mF)	1
4	13	154-1208B	MOTOR CAPACITOR (1.5 mF)	1
			ATTACHING PARTS	
		153-2002	FLAT WASHER - #8	1
		153-2019	LOCK NUT - 8-32 NYLOK	1
		153-2086	MS PHILLIPS - 8-32 X 5/8	1
4	14	154-6698	LID MOUNT PLATE	2
			FOR ATTACHING PARTS SEE FIG. 3:12	
4	15	153-1823	FLANGED TWISTLOCK INLET - 125V/20A	2 on 115V
4	15	153-1826	FLANGED TWISTLOCK INLET - 250V/20A	2 on 230V
			ATTACHING PARTS	
		153-2002	FLAT WASHER - #8	3
		153-2019	LOCKNUT - 8-32 (NYLOK)	3
		153-2086	MS PHILLIPS - 8-32 X 5/8	3
4	16	154-8683	POLYETHYLENE RECOVERY TANK ASSEMBLY (2002)	1
			ATTACHING PARTS	
		153-2406	HOSE CLAMP (1-1/2")	1
		153-8827	1-1/4 PVC ELBOW FOR RECOVERY TANK INLET (NO THREADS)	1
		154-0260	FLEXIBLE HOSE STOCK FOR VACUUM (1-1/2" ID)	28"
4	17	154-6629	SIDE LIFT HANDLE MOUNT	2
			FOR ATTACHING PARTS SEE FIG. 3:7	
4	18	153-8403	COIL-BRAKE MOTOR ASSEMBLY (7 RPM-115 VOLT)	1 on 115V
4	18	153-8803H	COIL-BRAKE MOTOR ASSEMBLY (7 RPM-230V 50 Hz)	1 on 230V
			FOR ATTACHING PARTS SEE FIG. 3:6	
4	19	154-8801	SQUEEGEE ADJUSTMENT ARM - LEFT	1
			ATTACHING PARTS	
		153-2004	FLAT WASHER - 1/4	2
		153-2014	LOCK WASHER - 1/4	2
		153-2023	HEX NUT - 1/4-20	2
		153-2079	FHMS - 1/4-20 X 1	2
4	20	153-6412	DUSTER MOTOR SHIELD (7 RPM)	2
			FOR ATTACHING PARTS SEE FIG. 3:2	
4	21	154-6628	CASTER/HANDLE MOUNT ANGLE	2
			FOR ATTACHING PARTS SEE FIG. 3:4	
4	22	154-6627	SIDE LIFT HANDLE	2
			FOR ATTACHING PARTS SEE FIG. 3:3E	
4	23	154-6717	5-TOOTH SENSOR DISK - ALUMINUM (3/8 BORE)	1
			ATTACHING PARTS	
		153-2201	SET SCREW - 10-32 X 3/8	1
4	24	154-1220	INDUCTIVE PROXIMITY SENSOR (TL-Q5MC1)	1
			ATTACHING PARTS	
		153-2231	LOCK NUT - 4-40 NYLOCK	2
		153-2505	MS PHILLIPS - 4-40 X 1	2
4	25	154-6715	TACHOMETER SENSOR GUARD	2
			ATTACHING PARTS	
		153-2013	#10 LOCKWASHER	1
		153-2086A	8-32 X 3/8 MS PHILLIPS	1
4	26	154-8616A	BUFFER MOTOR ASSEMBLY (AC) 115V	1 on 115V
4	26	154-8616E	BUFFER MOTOR ASSEMBLY (AC) 230V	1 on 230V
			FOR ATTACHING PARTS SEE FIG. 1:1E	
4	27	153-9013	BUFFER MOTOR PULLEY (10L050-1/2") 60Hz	1
4	27	154-9613	BUFFER MOTOR PULLEY (12L050-5/8") 50Hz	1
4	28	154-9615	T-BELT 255L050 (BUFFER MOTOR)	1

FIGURE NUMBER	INDEX NUMBER	PART NUMBER	PART NAME & DESCRIPTION	QUANTITY NEEDED
4	29	154-6679	BUFFER/HEAD DRIVE GUARD	1
			<i>ATTACHING PARTS</i>	
		153-2002	FLAT WASHER - #8	1
		153-2003	FLAT WASHER - #10	3
		153-2019	LOCKNUT - 8-32 (NYLOK)	1
		153-2086	MS PHILLIPS - 8-32 X 5/8	1
		153-2086A	MS PHILLIPS - 8-32 X 3/8	2
		153-2113	MS PHILLIPS - 8-32 X 3/8 (SELF TAP)	1
4	30	154-8839	BUFFER IDLER ASSEMBLY	1
			<i>ATTACHING PARTS</i>	
		153-2739	SHOULDER BOLT - 3/8 X 1 (5/16 THREAD)	2
		154-6841	BELT IDER MOUNT BAR	1
4	31	153-9014	BUFFER PULLEY (24LO50-3/4")	1
			<i>ATTACHING PARTS</i>	
		153-2707	SHCS - 5/16-24 X 3/4	1
		153-2711	FENDER WASHER - 5/16	1
4	32	154-9205D	PULLEY (24XL 3/8" BORE W/DBL SET)	1 on 60Hz
4	32	154-9205B	PULLEY - HEAD DRIVE MOTOR (28XL 3/8") 50 Hz	1 on 50Hz
4	33	153-1408	PUSH BUTTON (RED = NORMALLY OPEN)	1
			<i>ATTACHING PARTS</i>	
		153-1209	BUTTON GUARD	1
4	34	154-6841	BUFFER IDLER MOUNT BAR	1
			<i>ATTACHING PARTS</i>	
		153-2805	FHSS - 3/8 X 1-1/4	1
4	35	154-6357	LATCH FOR SPLASH GUARD	1
			<i>ATTACHING PARTS</i>	
		153-2003	FLAT WASHER - #10	1
		153-2207	MS PHILLIPS - 10-24 X 1-1/4	1
		153-2208	LOCKNUT - 10-24 (NYLOK)	1
		153-2510	NYLON WASHER - 1/4 (0.060)	2
4	36	154-6356	MOUNT BLOCK FOR LATCH	1
			<i>ATTACHING PARTS</i>	
		153-2003	FLAT WASHER - #10	2
		153-2013	LOCK WASHER - #10	2
		153-2091	MS PHILLIPS - 10-32 X 3/4	2
5	1	153-1028	PANEL-MOUNT FUSE HOLDER - UL (COMPLETE)	9 on 115V
5	1	153-1028E	PANEL-MOUNT FUSE HOLDER - IEC (COMPLETE)	9 on 230V
5	2	154-1273	FUSE (10A MDL)	1 on 115V
5	2	153-1810	CIRCUIT BREAKER - SPST (8 AMP)	1 on 230V
5	3	154-1262	FUSE - TIME DELAY (0.75A MDL) UL	2 on 115V
5	3	154-1260E	FUSE - TIME DELAY (GDC-315mA) IEC	2 on 230V
5	4	154-1266	FUSE - TIME DELAY (2.25A MDL) UL	1 on 115V
5	4	154-1264E	FUSE - TIME DELAY (GDC-1A) IEC	1 on 230V
5	5	154-1268C	FUSE - TIME DELAY (4A ABC) UL - CERAMIC	2 on 115V
5	5	154-1267E	FUSE - TIME DELAY (GDA-4A) IEC - CERAMIC	2 on 230V
5	6	154-1268	FUSE - TIME DELAY (4A MDL) UL	1 on 115V
5	6	154-1268E	FUSE - TIME DELAY (GDC-4A) IEC	1 on 230V
5	7	154-1261	FUSE - TIME DELAY (.5A MDL) UL	2 on 115V
5	7	154-1261E	FUSE - TIME DELAY (GDC-500MA) IEC	2 on 230V
5	8	153-1016	LY2 RELAY (115 VOLT)	1 on 115V
5	8	153-1616	LY2 RELAY (230 VOLT)	1 on 230V
			<i>ATTACHING PARTS</i>	
		153-1020	RELAY CLAMPS	1 PR

FIGURE NUMBER	INDEX NUMBER	PART NUMBER	PART NAME & DESCRIPTION	QUANTITY NEEDED
5	9	153-1017	LY2 RELAY BASE	1
			ATTACHING PARTS	
		153-2019	LOCKNUT - 8-32 (NYLOK)	2
		153-2507	FHMS PHILLIPS - 8-32 X 3/4	2
5	10	153-1018	LY3 RELAY (115 VOLT)	1 on 115V
5	10	153-1618	LY3 RELAY (230 VOLT)	1 on 230V
			ATTACHING PARTS	
		153-1020	RELAY CLAMPS	1 PR
5	11	153-1019	LY3 RELAY BASE	1
			ATTACHING PARTS	
		153-2019	LOCKNUT - 8-32 (NYLOK)	2
		153-2507	FHMS PHILLIPS - 8-32 X 3/4	2
5	12	153-1406	LY4 RELAY (115 VOLT)	1 on 115V
5	12	154-1611	LY4 RELAY (230 VOLT)	1 on 230V
			ATTACHING PARTS	
		153-1020	RELAY CLAMPS	1 PR
5	13	153-1407	LY4 RELAY BASE	1
			ATTACHING PARTS	
		153-2019	LOCKNUT - 8-32 (NYLOK)	2
		153-2507	FHMS PHILLIPS - 8-32 X 3/4	2
5	14	154-1801	MICROPROCESSOR - CPM2A	1
			ATTACHING PARTS	
		153-1809C	DIN RAIL (8-1/4")	1
5	15	153-1004	BUFFER MOTOR CONTACTOR (115 VOLT)	1 on 115V
5	15	153-1604	BUFFER MOTOR CONTACTOR (230 VOLT)	1 on 230V
			ATTACHING PARTS	
		153-1809C	DIN RAIL (8-1/4")	1
5	16	153-1009	TOGGLE SWITCH (DPDT)	1
			ATTACHING PARTS	
		153-1209	BUTTON GUARD	1
5	17	153-1209	BUTTON GUARD	1
5	18	154-1610	CIRCUIT BREAKER - DPST (15A)	1 on 115V
5	18	154-1272	CIRCUIT BREAKER - DPST (10A)	1 on 230V
5	19	154-0808	TOGGLE SWITCH STICKER	1
5	20	154-0807	FUSE STICKER	1
5	21	153-1809C	DIN RAIL (8-1/4")	1
			ATTACHING PARTS	
		153-2034	ALUMINUM RIVET - 0.187 X 0.450 X 0.375	2
		153-2035	BLIND RIVET WASHER - 3/16	2
5	22	153-1809F	DIN RAIL (8-1/4")	1
			ATTACHING PARTS	
		153-2034	ALUMINUM RIVET - 0.187 X 0.450 X 0.375	2
		153-2035	BLIND RIVET WASHER - 3/16	2
5	23	154-6341-2914	PC RELAY MOUNTING PLATE	1
			ATTACHING PARTS	
		153-2003	FLAT WASHER - 3/16	4
		153-2013	#10 LOCKWASHER	4
		153-2086	8-32 X 5/8 MS PHILLIPS	4
5	24	154-1835	RELAY AND BASE ASSEMBLY	8
			ATTACHING PARTS	
		153-1809D	DIN RAIL (4-1/2")	1
		154-1831	RED BRIDGE JUMPER	2 INCHES
		154-1832	GREY BRIDGE JUMPER	2 INCHES

FIGURE NUMBER	INDEX NUMBER	PART NUMBER	PART NAME & DESCRIPTION	QUANTITY NEEDED
5	25	154-1830	RELAY BASE SEPERATOR PLATE	2
			ATTACHING PARTS	
		154-1833	RELAY BASE	1
5	26	153-1016D	LY2 RELAY (24 VOLT)	1
			ATTACHING PARTS	
		153-1020	RELAY CLAMPS	1 PR
6	1	154-9211	LDS AND TACH SENSOR DRIVE CHAIN (25P29)	1
			ATTACHING PARTS	
		153-9045	25 MASTER LINK	1
6	2	154-9213	SPROCKET - 25B15 (TACH AND LDS DRIVE 1/2" BORE)	1
6	3	153-9010	SPROCKET - 25B15 (TRANSFER DRIVE & LDS - 3/8")	1
6	4	154-8320	PILLOWBLOCK - LANE DISTANCE SHAFT (CENTER-PLAIN)	1
			ATTACHING PARTS	
		153-2005	FLAT WASHER - 5/16	2
		153-2015	LOCK WASHER - 5/16	2
		153-2602	HHCS - 5/16-18 X 3/4	2
6	5	154-1220	INDUCTIVE PROXIMITY SENSOR (TL-Q5MC1)	2
			ATTACHING PARTS	
		153-2216A	MS PHILLIPS - 4-40 X 7/8	2
6	6	154-6264	SHAFT FOR TIMING DISK (REMOTE SENSOR)	1
6	7	154-6717	5-TOOTH SENSOR DISK - ALUMINUM (3/8 BORE)	1
			ATTACHING PARTS	
		153-2201	SET SCREW - 10-32 X 3/8	1
7	1	153-1012	DC MOTOR SPEED CONTROL (KBIC-120) W/ RESISTOR	1 on 115V
7	1	153-1812	DC MOTOR SPEED CONTROL (KBIC-240) W/ RESISTOR	1 on 230V
			ATTACHING PARTS	
		153-2019	LOCKNUT - 8-32 (NYLOK)	2
		153-2507	FHMS PHILLIPS - 8-32 X 3/4	2
7	2	153-1015	HORSEPOWER RESISTOR (1/4 HP 0.5 OHM)	1
7	3	154-8865	BALDOR DC DRIVE MOTOR ASSEMBLY	1
			ATTACHING PARTS	
		153-2004	FLAT WASHER - 1/4	4
		153-2014	LOCK WASHER - 1/4	4
		153-2052	HHCS - 1/4-20 X 7/8	4
7	4	153-9814	DRIVE CHAIN - (40P33)	1
			ATTACHING PARTS	
		153-9047	#40 MASTER LINK	1
7	5	153-9002	SPROCKET - 40B13 (5/8")	1
8	1	154-6723	CLEANER SUPPLY TANK (NO FITTINGS)	1
8	1	154-8840	CLEANER SUPPLY TANK (COMPLETE)	1
			ATTACHING PARTS	
		153-2004	FLAT WASHER - 1/4	2
		153-2014	LOCK WASHER - 1/4	2
		153-2603	HHCS - 1/4-20 X 3/4	2
8	2	154-0832	GARDEN HOSE FITTING CAP W/GASKE1	1
8	3	154-0243	ELBOW (90 DEGREE) 1/4 X 1/4 (GUEST)	1
8	4	154-8817	MANUAL VENT VALVE ASSEMBLY	1
8	5	154-0202B	PENCIL TUBING STOCK-3/16" OD X 1/16" ID	1
8	6	154-0248	REDUCING UNION CONNECTOR - 1/4" X 3/16"	2
8	7	154-0243	ELBOW (90 DEGREE) 1/4 X 1/4 (GUEST)	1

FIGURE NUMBER	INDEX NUMBER	PART NUMBER	PART NAME & DESCRIPTION	QUANTITY NEEDED
8	8	154-0412	ELBOW - 3/8 NPT X 1/4 TUBE	2
8	9	153-8206F	WATER SPRAY PUMP ASSEMBLY - FLOJET 115 VOL1	1 on 115V
8	9	153-8206H	WATER SPRAY PUMP ASSEMBLY - FLOJET 230 VOL1	1 on 230V
		ATTACHING PARTS		
		153-2003	FLAT WASHER - #10	8
		153-2004	FLAT WASHER - 1/4	4
		153-2207	MS PHILLIPS - 10-24 X 1-1/4	4
		153-2208	LOCKNUT - 10-24 (NYLOK)	4
8	10	154-0803	ELBOW - 3/8 NPT X 3/8" TUBE	1
8	11	154-0255	IN-LINE FILTER	1
8	11	154-8867	IN-LINE FILTER ASSEMBLY	1
8	12	154-0225	ELBOW - 3/8 TUBE OD X 1/4 NPT	1
8	13	153-0208S	CLEANER HOSE STOCK - 1/4" OD	INCH
8	14	153-6251S	SPRAY JET SWIVEL MOUNTING ANGLE	4
		ATTACHING PARTS		
		153-2004	FLAT WASHER - 1/4	2
		153-2014	LOCK WASHER - 1/4	1
		153-2023	HEX NUT - 1/4-20	1
		153-2052	HHCS - 1/4-20 X 7/8	1
8	15	153-6251M	SPRAY JET WALL MOUNTING ANGLE	4
		ATTACHING PARTS		
		153-2004	FLAT WASHER - 1/4	4
		153-2014	LOCK WASHER - 1/4	2
		153-2023	HEX NUT - 1/4-20	2
		153-2052	HHCS - 1/4-20 X 7/8	2
8	16	153-0207	SPRAY TIP - STAINLESS STEEL (8003)	2
8	17	153-6252	SPRAY JET BODY	4
		ATTACHING PARTS		
		153-2005	FLAT WASHER - 5/16	1
		153-2015	LOCK WASHER - 5/16	1
		153-2602	HHCS - 5/16-18 X 3/4	1
8	18	153-0818	MALE SWIVEL ELBOW - 1/4 TUBE-1/4 NPT	4
		ATTACHING PARTS		
		153-0208E	SPRAY PUMP HOSE - 1-9/16" (3-JET)	1
8	19	154-0007	SPRAY TIP - STAINLESS STEEL (1501)	2
8	20	153-0218	TIP RETAINER CAP CONNECTOR	4
8	21	153-0220	SCREEN CHECK VALVE (POLYPROPYLENE - 10#)	4
8	22	153-0217	MALE BODY (1/4 - NYLON)	4
8	23	154-0222	ELBOW - 1/4" STEM X 1/4" TUBING OD	1
8	24	154-0212B	FILTER FOR SUPPLY TANK (5" SS) PVC	1
8	25	153-0815	UNION TEE (1/4 X 1/4 X 1/4 - QUICK DISCONNECT)	4
8	26	154-0256	ELBOW - 3/8 TUBE X 3/8 TUBE	1
8	27	154-0202	PUMP TUBING STOCK (3/8" OD X 1/4" ID)	1
9	1	154-0258	ELBOW - 3/8 STEM X 3/8 TUBE	1
9	2	154-0225	ELBOW - 3/8 TUBE OD X 1/4 NPT	1
9	3	154-0212	TANK FILTER (5" SS) FOR OIL TANK	1

FIGURE NUMBER	INDEX NUMBER	PART NUMBER	PART NAME & DESCRIPTION	QUANTITY NEEDED
9	4	154-6726	CONDITIONER TANK (NO FITTINGS)	1
9	4	154-8842	CONDITIONER TANK (COMPLETE)	1
			<i>ATTACHING PARTS</i>	
		153-2004	FLAT WASHER - 1/4	2
		153-2014	LOCK WASHER - 1/4	2
		153-2603	HHCS - 1/4-20 X 3/4	2
9	5	154-0832	GARDEN HOSE FITTING CAP W/ GASKE	1
9	6	154-0223	ELBOW (90 DEGREE) - 1/4 NPT X 1/4 TUBE	2
9	7	154-8817	MANUAL VENT VALVE ASSEMBLY	1
9	8	154-0224	MALE CONNECTOR - 1/4" TUBE x 1/8 NPT	1
			<i>ATTACHING PARTS</i>	
		154-0226	ELBOW - TUBE TO HOSE BARB (1/4" STEM x 1/4 ID HOSE)	1
9	9	154-1209	VALVE-24V DC 3-WAY (1/8" NPT)	1
			<i>ATTACHING PARTS</i>	
		153-2523	FHMS PHILLIPS - 4-40 X 3/8	2
9	10	154-0609	MAGNETIC CATCH FOR SPLASH GUARD	2
9	11	154-0202B	PENCIL TUBING STOCK-3/16" OD X 1/16" ID	INCH
9	12	154-0248	REDUCING UNION CONNECTOR-1/4" X 3/16"	1
9	13	154-1225	PRESSURE GAUGE (0-30 PSI) - 1-1/2 DIA	1
			<i>USE TEFLON TAPE</i>	
			<i>ATTACHING PARTS</i>	
		154-0257	FEMALE CONNECTOR - 1/4" TUBE x 1/8 FPT	1
9	14	154-6257	MOUNTING ANGLE FOR OIL PRESSURE GAUGE	1
			<i>ATTACHING PARTS</i>	
		153-2004	FLAT WASHER - 1/4	2
		153-2014	LOCK WASHER - 1/4	2
		153-2023	HEX NUT - 1/4-20	2
		153-2079	FHMS - 1/4-20 X 1	2
9	15	153-0815	UNION TEE (1/4 X 1/4 X 1/4 - QUICK DISCONNECT)	1
9	16	154-8660	PULSE SUPPRESSER KIT - PUMP TO METERING VALVE	1
9	17	154-0238	SWIVEL ELBOW - 1/4" TUBE X 1/8 NPT	1
9	18	154-9208	PULLEY - METERING PUMP (12XL-5/16)	1
9	19	154-1214	FLUID METERING PUMP - 0.05 ml/STROKE	1
			<i>ATTACHING PARTS</i>	
		153-2013	LOCK WASHER - #10	2
		153-2086	MS PHILLIPS - 8-32 X 5/8	2
9	20	154-6223A	MOUNTING ANGLE - PUMP & MOTOR	1
			<i>ATTACHING PARTS</i>	
		153-2602	HHCS - 5/16-18 X 3/4	2

FIGURE NUMBER	INDEX NUMBER	PART NUMBER	PART NAME & DESCRIPTION	QUANTITY NEEDED
9	21	154-9202A	BELT FOR METERING PUMP (130XL037) 115V	1 on 115V
9	21	154-9215	BELT FOR METERING PUMP (140XL037) 230V	1 on 230V
9	22	154-6287	GUARD FOR PUMP & MOTOR	1
		<i>ATTACHING PARTS</i>		
		153-2013	LOCK WASHER - #10	2
		153-2086A	MS PHILLIPS - 8-32 X 3/8	2
9	23	154-8604	MOTOR FOR METERING PUMP 115V (#4)	1 on 115V
		154-8604E	MOTOR FOR METERING PUMP 230V	1 on 230V
		<i>ATTACHING PARTS</i>		
		153-2013	LOCK WASHER - #10	4
		153-2091	MS PHILLIPS - 10-32 X 3/4	4
9	24	154-9607	PULLEY (24XL 5/16" BORE W/SET) 60Hz	1
9	24	154-9614	PULLEY (30XL 5/16" BORE W/SET) 50Hz	1
		<i>ATTACHING PARTS</i>		
		153-2051A	SET SCREW - 1/4-20 X 1/4	1
9	25	154-8867	FILTER ASSEMBLY (IN-LINE) OPTIONAL	1
9	25	154-0255	IN-LINE FILTER OPTIONAL	1
9	26	154-0256	ELBOW - 3/8 TUBE OD x 3/8 TUBE	1
9	27	154-0218	GROMMET - 7/16 X 11/16 (1/4" PANEL)	1
9	28	154-0202	PUMP TUBING STOCK - (3/8 OD X 1/4 ID)	6"
10	1	154-6823	SMOOTHER MOUNTING ANGLE	1
		<i>ATTACHING PARTS</i>		
		153-2004	FLAT WASHER - 1/4	2
		153-2014	LOCK WASHER - 1/4	2
		153-2023	HEX NUT - 1/4-20	2
		153-2052	HHCS - 1/4-20 X 7/8	2
10	2	154-6825	HEAD MOUNT BAR (NYLON)	3
		<i>ATTACHING PARTS</i>		
		153-2004	FLAT WASHER - 1/4	2
		153-2014	LOCK WASHER - 1/4	2
		153-2052	HHCS - 1/4-20 X 7/8	2
10	3	154-1220	INDUCTIVE PROXIMITY SENSOR (TL-Q5MC1)	2
		<i>ATTACHING PARTS</i>		
		153-2216A	MS PHILLIPS - 4-40 X 7/8	2
10	4	153-2704	STEEL COLLAR - 5/16 X 3/8	2
		<i>ATTACHING PARTS</i>		
		153-2709	NYLON WASHER - 5/16 (0.060)	1
10	5	154-6626A	TRANSFER ASSEMBLY ADJUSTMENT ANGLE	1
		<i>ATTACHING PARTS</i>		
		153-2004	FLAT WASHER - 1/4	2
		153-2014	LOCK WASHER - 1/4	2
		153-2023	HEX NUT - 1/4-20	2
		153-2078	FHMS - 1/4-20 X 3/4	2
10	6	153-2737	HHCS - 5/16-18 X 4	2
		<i>ATTACHING PARTS</i>		
		153-2709	NYLON WASHER - 5/16 (0.060)	1
10	7	154-6622	BRUSH PAD BASE BLOCK	2
		<i>ATTACHING PARTS</i>		
		153-2079	FHMS - 1/4-20 X 1	3

FIGURE NUMBER	INDEX NUMBER	PART NUMBER	PART NAME & DESCRIPTION	QUANTITY NEEDED
10	8	154-8609	TRANSFER ROLLER MOUNTING ARM (LEFT)	1
10	8	154-8610	TRANSFER ROLLER MOUNTING ARM (RIGHT)	1
			ATTACHING PARTS	
		153-2005	FLAT WASHER - 5/16	2
		153-2015	LOCK WASHER - 5/16	2
		153-2061	HHCS - 5/16-18 X 1	2
10	9	154-6646	HEAD BELT MOUNT PLATE	1
			ATTACHING PARTS	
		153-2081	MS PHILLIPS - 6-32 X 1/2	4
		153-2504	MS PHILLIPS - 4-40 X 3/8	1
10	10	154-6615	BRUSH PAD TOP PLATE	2
			ATTACHING PARTS	
		153-2013	LOCK WASHER - #10	5
		153-2086A	MS PHILLIPS - 8-32 X 3/8	5
10	11	154-6696	TIP AND HOSE HOLDER	1
			ATTACHING PARTS	
		153-2804	COLLAR - 3/8 X 3/4 X 3/8	2
		153-2051	SET SCREW - 1/4-20 X 1/2	1
10	12	154-6672A	SLIDING HEAD	1
			ATTACHING PARTS	
		154-6646	HEAD BELT MOUNT PLATE	1
		154-9201	BELT FOR HEAD DRIVE	1
10	13	153-2540A	SPRING FOR WIPING PAD (1-3/4")	20
10	14	154-8617	PATTERN SMOOTHING PAD ASSEMBLY	10
			ATTACHING PARTS	
		153-2540	SPRING FOR WIPING PAD	2
10	15	154-6647A	SLIDING HEAD BAR	1
			ATTACHING PARTS	
		153-2702	FHMS - 1/4-20 X 1 SELF-LOCKING	3
10	16	154-8608	TRANSFER ROLLER ASSEMBLY	1
			ATTACHING PARTS	
		154-8609	TRANSFER ROLLER MOUNTING ARM (LEFT)	1
		154-8610	TRANSFER ROLLER MOUNTING ARM (RIGHT)	1
		153-9010	SPROCKET - 25B15 (TRANSFER DRIVE & LDS - 3/8")	1
10	17	154-8627	FELT DRIP PAD - LEFT SIDE	1
10	17	154-8628	FELT DRIP PAD - RIGHT SIDE (NOT SHOWN)	1
			ATTACHING PARTS	
		153-2003	FLAT WASHER - #10	1
		153-2013	LOCK WASHER - #10	1
		153-2086	MS PHILLIPS - 8-32 X 5/8	1
10	18	153-2713	SPRING - OIL TIP RETAINER	1
			ATTACHING PARTS	
		154-6696	TIP AND HOSE HOLDER	1
10	19	153-2051	SET SCREW - 1/4-20 X 1/2	1
10	20	153-2804	COLLAR - 3/8 X 3/4 X 3/8	1
10	21	154-6832	OIL PENCIL TIP - ALUMINUM	1
			ATTACHING PARTS	
		154-6696	TIP AND HOSE HOLDER	1
11	1	154-8607	SQUEEGEE & DUSTER SWITCH GUARD(WITH FELT FOR ATTACHING PARTS SEE FIG. 3:9	1
11	2	153-2530	STANDOFF FASTENER-8-32 X 1 (M/F)	3
			ATTACHING PARTS	
		153-2013	LOCK WASHER - #10	1
		153-2086	MS PHILLIPS - 8-32 X 5/8	1

FIGURE NUMBER	INDEX NUMBER	PART NUMBER	PART NAME & DESCRIPTION	QUANTITY NEEDED	
11	3	153-2532	STANDOFF FASTENER - 8-32 X 1 (FEM/FEM)	3	
		ATTACHING PARTS			
		153-2013	LOCK WASHER - #10	1	
		153-2086	MS PHILLIPS - 8-32 X 5/8	1	
11	4	154-1015	MICROSWITCH WITH ROLLER	2	
		ATTACHING PARTS			
		153-2001	FLAT WASHER - #6	4	
		153-2018	LOCKNUT - 6-32 (NYLOK)	2	
		153-2084	MS PHILLIPS - 6-32 X 1	2	
11	5	153-8207	BRAKE MOTOR ASSY. (25 RPM-115 V)	1 on 115V	
11	5	153-8807H	BRAKE MOTOR ASSEMBLY (25 RPM-230V 50 Hz)	1 on 230V	
		ATTACHING PARTS			
		153-2604	MS FLAT PHILLIPS - 10-32 X 1/2	4	
11	6	154-6670	SQUEEGEE CAM	1	
		ATTACHING PARTS			
		153-2051	SET SCREW - 1/4-20 X 1/2	1	
11	7	154-8646	5/16-24 X 3 ALLTHREAD (SQUEEGEE PIVOT)	1	
		ATTACHING PARTS			
		153-0211	SQUEEGEE ROD END WITH FITTING	2	
		153-2027A	JAM NUT - 5/16-18	2	
11	8	153-0211	SQUEEGEE ROD END WITH FITTING	2	
		ATTACHING PARTS			
		153-2027A	JAM NUT - 5/16-18	2	
		154-8646	5/16-24 X 3 ALLTHREAD (SQUEEGEE PIVOT)	1	
11	9	153-2214	JAM NUT - 5/16-24	2	
		ATTACHING PARTS			
		154-8646	5/16-24 X 3 ALLTHREAD (SQUEEGEE PIVOT)	1	
		153-0211	SQUEEGEE ROD END WITH FITTING	1	
11	10	153-0211	SQUEEGEE ROD END WITH FITTING	2	
		ATTACHING PARTS			
		153-2027A	JAM NUT - 5/16-18	2	
		154-8646	5/16-24 X 3 ALLTHREAD (SQUEEGEE PIVOT)	1	
12	1		DUSTER CLOTH	1	
12	2	153-6850	UHMW DUSTER PLUG FOR CARDBOARD CORE	1	
		ATTACHING PARTS			
		153-2005	FLAT WASHER - 5/16	1	
		153-2020A	LOCKNUT - 1/4-20 (STOVER)	1	
		153-2535	SHOULDER BOLT - 5/16 X 2-1/4 (1/4-20) DUSTER PLUG	1	
		153-2808	SPRING - 0.42 OD X 1.25 (DUSTER PLUG)	1	
12	3	153-8202B	DUSTER SOLID DRIVE HUB ASSEMBLY (PVC-1/4-28)	1	
		ATTACHING PARTS			
		153-2050	SET SCREW - 1/4-28 X 3/8	1	
12	4	153-8824	PVC TAKE-UP REEL ASSEMBLY (44-3/4")	1	
12	5	153-8838	CUSHION ROLLER ASSEMBLY WITH STEMS	1	
12	6	153-6825	DUSTER CLOTH ROUTING BAR (SS)	1	
		ATTACHING PARTS			
		153-2409	SHOULDER BOLT - 1/4 X 3/8 (10-24) DUSTER ROD	2	
		153-9409	FLANGED BUSHING (1/4 X 3/8 X 1/4)	2	
12	7	153-8420	CUSHION ROLLER PIVOT ARM ASSEMBLY	2	
		ATTACHING PARTS			
		153-2005	FLAT WASHER - 5/16	1	
		153-2020A	LOCKNUT 1/4-20 STOVER	1	
		153-2408	SHOULDER BOLT - 5/16 X 1/2 1/4-20 THREADS	1	

FIGURE NUMBER	INDEX NUMBER	PART NUMBER	PART NAME & DESCRIPTION	QUANTITY NEEDED
12	8	153-6853	UHMW DUSTER PLUG FOR PVC TAKE-UP REEL	1
		<i>ATTACHING PARTS</i>		
		153-2005	FLAT WASHER - 5/16	1
		153-2020A	LOCKNUT - 1/4-20 (STOVER)	1
		153-2535	SHOULDER BOLT - 5/16 X 2-1/4 (1/4-20) DUSTER PLUG	1
		153-2808	SPRING - 0.42 OD X 1.25 (DUSTER PLUG)	1
12	9	153-2808	SPRING - 0.42 OD X 1.25 (DUSTER PLUG)	2
12	10	153-8201B	DUSTER DRIVE HUB ASSEMBLY (1/4-28)	1
		<i>ATTACHING PARTS</i>		
		153-2050	SET SCREW - 1/4-28 X 3/8	1
12	11	154-1603	MICROSWITCH - WITHOUT ROLLER (LARGE - STD)	2
		<i>ATTACHING PARTS</i>		
		153-2001	FLAT WASHER - #6	4
		153-2018	LOCKNUT - 6-32 (NYLOK)	2
		153-2084	MS PHILLIPS - 6-32 X 1	2
13	1	153-1203	MICROSWITCH - WITH ROLLER (SQUEEGEE & BRUSH)	2
		<i>ATTACHING PARTS</i>		
		153-2505	MS PHILLIPS - 4-40 X 1	2
13	2	154-6824	BRUSH CAM SWITCH PLATE	1
		<i>ATTACHING PARTS</i>		
		153-2002	FLAT WASHER - #8	4
		153-2019	LOCKNUT - 8-32 (NYLOK)	2
		153-2086	MS PHILLIPS - 8-32 X 5/8	2
13	3	153-8207	BRAKE MOTOR ASSEMBLY (25 RPM-115 VOLT)	1
13	3	153-8807H	BRAKE MOTOR ASSEMBLY (25 RPM-230V 50 Hz)	1
		<i>FOR ATTACHING PARTS SEE FIG. 3:1C</i>		
13	4	154-8640	FLANGED BEARING-STD BRUSH (3/4" ROTATED)	2
		<i>FOR ATTACHING PARTS SEE FIG. 2:1E</i>		
13	5	154-8638	BUFFER BRUSH LIFTING LINK - LEFT	1
		154-8639	BUFFER BRUSH LIFTING LINK - RIGHT	1
		<i>ATTACHING PARTS</i>		
		153-2027A	JAM NUT - 5/16-18	2
		153-2801	SHOULDER BOLT - 3/8 X 3/8 (5/16-18) BRUSH LIFT	2
13	6	154-8837	CAM TO BRUSH LIFTING ROD LINK ASSEMBLY	1
		<i>ATTACHING PARTS</i>		
		153-2027A	JAM NUT - 5/16-18	1
		153-2801	SHOULDER BOLT - 3/8 X 3/8 (5/16-18) BRUSH LIFT	2
13	7	154-8637	BUFFER BRUSH LIFTING ASSEMBLY	1
		<i>ATTACHING PARTS</i>		
		153-2804	COLLAR - 3/8 X 3/4 X 3/8	2
13	8	154-6243	MOTOR CAM - DUAL LOBES (FOR STACKED SWITCHES)	1
		<i>ATTACHING PARTS</i>		
		153-2051	SET SCREW - 1/4-20 X 1/2	1
13	9	153-2027A	JAM NUT - 5/16-18	3
		<i>ATTACHING PARTS</i>		
		153-2801	SHOULDER BOLT - 3/8 X 3/8 (5/16-18) BRUSH LIFT	1
13	10	153-2801	SHOULDER BOLT - 3/8 X 3/8 (5/16-18) BRUSH LIFT	1
		<i>ATTACHING PARTS</i>		
		153-2027A	JAM NUT - 5/16-18	1
13	11	153-2801A	SHOULDER BOLT-3/8 X 3/8-CUT (5/16-18)	2

KUSTODIAN PARTS LIST 12:02

PART NUMBER	PART DESCRIPTION	UOM
153-0001	TRANSPORT CASTER (3" DUAL WHEEL)	EACH
153-0013A	SHIPPING SKID (42 x 68)	EACH
153-0030S	STOCK - 5/16" ID CLEAR PVC TUBING	INCH
153-0036	LID VIBRATION STRIP (SOLD BY INCH)	INCH
153-0037	DECAL (MADE IN USA)	EACH
153-0043	THICK FELT WASHER - 5/8	EACH
153-0046	STOCK - SQUARE GROMMET	INCH
153-0047F	KEGEL KLOTH - TAN (60') ROLL	ROLL
153-0047K	KEGEL KLOTH - TAN (60') CASE	CASE
153-0202	COMPLETE SQUEEGEE ASSEMBLY (BLUE)	EACH
153-0202B	REPLACEMENT SQUEEGEE BLADE - BLUE STOCK (42")	EACH
153-0204B	VACUUM MOTOR BRUSHES - 115 VOLT (SOLD AS PAIR)	PAIR
153-0204C	VACUUM MOTOR BRUSHES - 230 VOLT (SOLD AS PAIR)	PAIR
153-0204F	FAN BLADE FOR VACUUM MOTOR (REPLACEMENT ONLY)	EACH
153-0204H	HOUSING FOR VACUUM MOTOR (REPLACEMENT ONLY)	EACH
153-0207	SPRAY TIP - STAINLESS STEEL (8003)	EACH
153-0208S	SPRAY HOSE STOCK - 1/4" OD	INCH
153-0211	SQUEEGEE ROD END WITH FITTING (ON MOTOR)	EACH
153-0217	MALE BODY (1/4 - NYLON)	EACH
153-0218	TIP RETAINER CAP CONNECTOR	EACH
153-0220	SCREEN CHECK VALVE (POLYPROPYLENE - 10#)	EACH
153-0242	REDUCER (1/4 - FPT X 3/8 - MPT) PVC	EACH
153-0252	SUPPLY TANK FUNNEL	EACH
153-0429	DMR DUSTER ROLL SUPPORT PIPE (40")	EACH
153-0802	DUSTER ROUTING DIAGRAM	EACH
153-0810	SHIPPING BOX (42.25 X 17 X 62)	EACH
153-0812	TRANSPORT CASTER-2" HEAVY DUTY (3/8")	EACH
153-0815	UNION TEE (1/4 X 1/4 X 1/4-QUICK DISC)	EACH
153-1004	BUFFER MOTOR CONTACTOR 115V	EACH
153-1009	TOGGLE SWITCH (DPDT)	EACH
153-1011	BRAKE RESISTOR (10 OHM)	EACH
153-1012	DC MOTOR SPEED CONTROL (KBIC-120) W/ RESISTOR	EACH
153-1012F	FILTER FOR SPEED CONTROL	EACH
153-1015	HORSEPOWER RESISTOR (1/4 HP 0.05 OHM)	EACH
153-1016	LY2 RELAY (115 VOLT)	EACH
153-1016D	LY2 RELAY (24 VOLT)	EACH
153-1017	LY2 RELAY BASE	EACH
153-1018	LY3 RELAY (115 VOLT)	EACH
153-1019	LY3 RELAY BASE	EACH
153-1020	RELAY CLAMPS (PER PAIR)	EACH
153-1025	MALE PLUG - 125V/15A	EACH
153-1028	PANEL-MOUNT FUSE HOLDER - UL (COMPLETE)	EACH
153-1028E	PANEL-MOUNT FUSE HOLDER - IEC (COMPLETE)	EACH
153-1034	FEMALE QUICK DISCONNECT-3/16 (18 AWG)	EACH
153-1034A	FEMALE QUICK DISCONNECT-3/16 (14 AWG)	EACH
153-1035	FEMALE QUICK DISCONNECT-1/4 (18 AWG)	EACH
153-1035A	FEMALE QUICK DISCONNECT-1/4 (14 AWG)	EACH
153-1036	RING TERMINAL - 16-14 AWG (#6 STUD)	EACH
153-1036A	RING TERMINAL - 22-18 AWG (#6 STUD)	EACH
153-1036B	RING TERMINAL - 16-14 AWG (#8 STUD)	EACH

KUSTODIAN PARTS LIST 12:02

PART NUMBER	PART DESCRIPTION	UOM
153-1037	WIRE JOINT (LARGE)	EACH
153-1038	WIRE JOINT - 22-18 AWG (SMALL)	EACH
153-1041	CONNECTOR 2 CIRCUIT FREE RECEPTACLE	EACH
153-1042	CONNECTOR 2 CIRCUIT FREE PLUG (MALE PIN)	EACH
153-1043	CONNECTOR 3 CIRCUIT PANEL PLUG-MALE PINS	EACH
153-1044	CONNECTOR 3 CIRCUIT FREE RECEPTACLE	EACH
153-1045	FEMALE TERMINAL (0.093 DIA 14-20 AWG)	EACH
153-1046	MALE TERMINAL (0.093 DIA 14-20 AWG)	EACH
153-1047	WIRE TIE (4")	EACH
153-1049A	WIRE HARNESS CLAMP - 1/4	EACH
153-1049B	WIRE HARNESS CLAMP - 1/2	EACH
153-1049C	WIRE HARNESS CLAMP - 3/4	EACH
153-1049D	WIRE HARNESS CLAMP - 1/8	EACH
153-1049E	WIRE HARNESS CLAMP - 3/8	EACH
153-1050	STOCK - HEAT SHRINK TUBING (1/4)	INCH
153-1050A	STOCK - HEAT SHRINK TUBING (3/16)	INCH
153-1050B	STOCK - HEAT SHRINK TUBING (1/8)	INCH
153-1054	PLUG - 3/8" OIL VENT HOSE (GRAY PLASTIC)	EACH
153-1055	TUBE HOSE STEM (GRAY PLASTIC 3/8 x 3/8)	EACH
153-1203	MICROSWITCH-WITH ROLLER (SQUEEGEE/BRUSH)	EACH
153-1205	RT ANGLE FEMALE QUICK DISC-1/4 (12-10)	EACH
153-1206	RT ANGLE FEMALE QUICK DISC-1/4 (16-14)	EACH
153-1207	RT ANGLE FEMALE QUICK DISC-1/4 (22-18)	EACH
153-1209	BUTTON GUARD	EACH
153-1356	STOCK WIRE-3 COND GRAY JACKET (RD/BK/WT)	FOOT
153-1404	SILICON RECTIFIER DIODE (FOR PC)	EACH
153-1406	LY4 RELAY (115 VOLT)	EACH
153-1407	LY4 RELAY BASE	EACH
153-1408	PUSH BUTTON (RED = NORMALLY OPEN)	EACH
153-1604	BUFFER MOTOR CONTACTOR (230 VOLT)	EACH
153-1616	LY2 RELAY (230 VOLT)	EACH
153-1618	LY3 RELAY (230 VOLT)	EACH
153-1625	MALE PLUG - 250V/15A	EACH
153-1809F	DIN RAIL (8-1/4")	EACH
153-1810	CIRCUIT BREAKER - SPST 8A	EACH
153-1812	DC MOTOR SPEED CONTROL (KBIC-240)W/ RESISTOR	EACH
153-1813A	STOCK-POWER CORD (12 AWG 3 COND-IEC)	FOOT
153-1818	WIRE TIE - 34" (C200H PC)	EACH
153-1822	FEMALE TWISTLOCK - 125V/20A	EACH
153-1823	FLANGED TWISTLOCK INLET - 125V/20A	EACH
153-1824	FEMALE TWISTLOCK - 250V/20A	EACH
153-1825	MALE PLUG 125V/20A	EACH
153-1825R	RECEPTACLE 125V/20A	EACH
153-1826	FLANGED TWISTLOCK INLET - 250V/20A	EACH
153-2001	FLAT WASHER - #6	EACH
153-2002	FLAT WASHER - #8	EACH
153-2003	FLAT WASHER - #10	EACH
153-2004	FLAT WASHER - 1/4	EACH
153-2005	FLAT WASHER - 5/16	EACH
153-2006	FLAT WASHER - 3/8	EACH

KUSTODIAN PARTS LIST 12:02

PART NUMBER	PART DESCRIPTION	UOM
153-2007	FLAT WASHER - 1/2	EACH
153-2009	NYLON FLAT WASHER (3/8 - 0.060)	EACH
153-2013	LOCK WASHER - #10	EACH
153-2014	LOCK WASHER - 1/4	EACH
153-2015	LOCK WASHER - 5/16	EACH
153-2016	LOCK WASHER - 3/8	EACH
153-2017	LOCK WASHER - 1/2	EACH
153-2018	LOCKNUT - 6-32 (NYLOK)	EACH
153-2019	LOCKNUT - 8-32 (NYLOK)	EACH
153-2020	LOCKNUT - 1/4-20 (NYLOK)	EACH
153-2020A	LOCKNUT - 1/4-20 (STOVER)	EACH
153-2021	LOCKNUT - 3/8-16 (NYLOK)	EACH
153-2021A	LOCKNUT - 3/8-16 (STOVER)	EACH
153-2023	HEX NUT - 1/4-20	EACH
153-2024	HEX NUT - 5/16-18	EACH
153-2025	HEX NUT - 3/8-16	EACH
153-2026	HEX NUT - 1/2-13	EACH
153-2027	JAM NUT - 3/8-16	EACH
153-2027A	JAM NUT - 5/16-18	EACH
153-2029	ACORN NUT - 1/4-20	EACH
153-2034	ALUMINUM RIVET (0.187 X 0.450 X 0.375)	EACH
153-2035	BLIND RIVET WASHER - 3/16	EACH
153-2036	SNAP RING - 5/8	EACH
153-2037	ROLL PIN - 1/8 X 1-3/4	EACH
153-2040	SPOOL GROMMET - 5/16 X 1/2 (1/4" PANEL)	EACH
153-2049	SET SCREW - 8-32 X 3/16	EACH
153-2050	SET SCREW - 1/4-28 X 3/8	EACH
153-2051	SET SCREW - 1/4-20 X 1/2	EACH
153-2051A	SET SCREW - 1/4-20 X 1/4	EACH
153-2052	HHCS - 1/4-20 X 7/8	EACH
153-2052A	BHSS - 1/4-20 X 7/8	EACH
153-2053	HHCS - 1/4-20 X 1	EACH
153-2053A	BHSS - 1/4-20 X 1	EACH
153-2054	HHCS - 1/4-20 X 1-1/4	EACH
153-2055	HHCS - 1/4-20 X 1-1/2	EACH
153-2061	HHCS - 5/16-18 X 1	EACH
153-2062	HHCS - 5/16-18 X 1-1/4	EACH
153-2067	HHCS - 3/8-16 X 1-1/4	EACH
153-2068	HHCS - 3/8-16 X 1-1/2	EACH
153-2073A	HHCS - 1/2-13 X 1-1/2	EACH
153-2075	CARRIAGE BOLT - 1/4-20 X 2-1/2	EACH
153-2078	FHMS - 1/4-20 X 3/4	EACH
153-2079	FHMS - 1/4-20 X 1	EACH
153-2081	MS PHILLIPS - 6-32 X 1/2	EACH
153-2085	MS PHILLIPS - 6-32 X 1-1/4	EACH
153-2086	MS PHILLIPS - 8-32 X 5/8	EACH
153-2086A	MS PHILLIPS - 8-32 X 3/8	EACH
153-2087	MS PHILLIPS - 8-32 X 3/4	EACH
153-2090	MS PHILLIPS - 8-32 X 1-1/2	EACH
153-2091	MS PHILLIPS - 10-32 X 3/4	EACH

KUSTODIAN PARTS LIST 12:02

PART NUMBER	PART DESCRIPTION	UOM
153-2093	SPRING - 0.42 OD X 0.75 (PROCESSOR)	EACH
153-2099A	KEYSTOCK - 3/16 X 3/16 X 12"	INCH
153-2108	DOME RIVET - 1/8 FOR NAMEPLATE	EACH
153-2113	MS PHILLIPS - 8-32 X 3/8 (SELF TAP)	EACH
153-2116	LOCK NUT - 5/16-18	EACH
153-2207	MS PHILLIPS - 10-24 X 1-1/4	EACH
153-2208	LOCKNUT - 10-24 (NYLOK)	EACH
153-2214	JAM NUT - 5/16-24	EACH
153-2216	MS PHILLIPS - 4-40 X 5/8	EACH
153-2219	MS PHILLIPS - 10 X 2 (SELF TAP)	EACH
153-2223N	WING NUT - 1/4-20 (NYLOK)	EACH
153-2231	LOCKNUT - 4-40	EACH
153-2303	SHOULDER BOLT-3/8 X 5/8 (5/16-18)	EACH
153-2304	JAM NUT - 1/4-20	EACH
153-2401	SPRING - 0.54 OD X 0.75 (GUIDE ROLLER)	EACH
153-2402	SPOOL GROMMET - 1/4 X 3/8 (1/4" PANEL)	EACH
153-2405A	3/8-16 X 2-5/8" STEEL STUD	EACH
153-2406	HOSE CLAMP (1/2")	EACH
153-2407	SHOULDER BOLT-3/8 X 1-3/4 (5/16-18)	EACH
153-2408	SHOULDER BOLT-5/16 X 1/2 (1/4-20)	EACH
153-2409	SHOULDER BOLT-1/4 X 3/8 (10-24)	EACH
153-2412	SHCS-1/4-20 X 1/2 (CUSHION ROLLER STOP)	EACH
153-2414	HEX NUT - 8-32	EACH
153-2503	FHSS - 5/16-18 X 1-1/4	EACH
153-2504	MS PHILLIPS - 4-40 X 3/8	EACH
153-2505	MS PHILLIPS - 4-40 X 1	EACH
153-2507	FHMS PHILLIPS - 8-32 X 3/4	EACH
153-2509	CIRCUIT BOARD MOUNT	EACH
153-2510	NYLON WASHER - 1/4 (0.060)	EACH
153-2511	SPRING NUT - 8-32	EACH
153-2512	ACORN NUT - 5/16-18	EACH
153-2517	HOSE CLAMP (5/16") RANGE = 7/32 - 5/8	EACH
153-2521	MS PHILLIPS - #6 X 3/8 (SELF TAP)	EACH
153-2527	SHOULDER BOLT-3/8 X 2-1/4 (5/16-18)	EACH
153-2529	SET SCREW - 8-32 X 3/8	EACH
153-2530	STANDOFF FASTENER-8-32 X 1 (M/F)	EACH
153-2531	NYLON WASHER - 3/8 (0.030)	EACH
153-2532	STANDOFF FASTENER-8-32 X 1 (F/F)	EACH
153-2533	INTERNAL TOOTH LOCK WASHER - #8	EACH
153-2536	FINISHING PLUG - 1/2 BLACK NYLON	EACH
153-2540A	SPRING FOR WIPING PAD	EACH
153-2541	MS PHILLIPS - 8-32 X 1/2	EACH
153-2602	HHCS - 5/16-18 X 3/4	EACH
153-2603	HHCS - 1/4-20 X 3/4	EACH
153-2604	MS FLAT PHILLIPS - 10-32 X 1/2	EACH
153-2701	KNURLED HEAD BOLT - 1/4-20 X 2	EACH
153-2702	FHMS - 1/4-20 X 1 SELF-LOCKING	EACH
153-2703	STEEL COLLAR - 1/4 X 3/8	EACH
153-2704	STEEL COLLAR - 5/16 X 3/8	EACH
153-2705	CARRIAGE BOLT - 1/4-20 X 7/8	EACH

KUSTODIAN PARTS LIST 12:02

PART NUMBER	PART DESCRIPTION	UOM
153-2706	CARRIAGE BOLT - 1/4-20 X 1	EACH
153-2707	SHCS - 5/16-18 X 3/4	EACH
153-2708	SHOULDER BOLT-1/4 X 1/4 (10-24)	EACH
153-2709	NYLON WASHER - 5/16 (0.060)	EACH
153-2710	HHCS - 5/16-18 X 4-1/2	EACH
153-2711	FENDER WASHER - 5/16	EACH
153-2712	ROLL PIN - 5/32 X 2	EACH
153-2713	SPRING - OIL TIP RETAINER (STD)	EACH
153-2714	FHMS - 1/4-20 X 1-3/4	EACH
153-2715	SPOOL GROMMET - 3/8 X 9/16 (3/8" PANEL)	EACH
153-2717	HEX NUT - 6-32	EACH
153-2718	FHMS PHILLIPS - 6-32 X 5/8	EACH
153-2720	SQUARE HEAD BOLT-1/4-20 X 2 & SQUARE NUT	EACH
153-2722	HHCS - 5/16-18 X 5-1/2 (FULL THREAD)	EACH
153-2723	FHMS PHILLIPS - 4-40 X 3/8	EACH
153-2726	HHCS - 1/4-20 X 3/4	EACH
153-2727	FHMS - 4-40 X 1-1/4	EACH
153-2739	SHOULDER BOLT - 3/8 X 1 (5/16-18 THREAD)	EACH
153-2801	SHOULDER BOLT-3/8 X 3/8 (5/16-18)	EACH
153-2801A	SHOULDER BOLT-3/8 X 3/8-CUT (5/16-18)	EACH
153-2802	FHSS - 5/16-18 X 5/8	EACH
153-2804	COLLAR - 3/8 X 3/4 X 3/8	EACH
153-2805	FHSS - 3/8-16 X 1-1/4	EACH
153-2805A	FHSS - 3/8-16 X 1-1/2	EACH
153-2806	FLAT HEAD PHILLIPS - 8-32 X 5/8	EACH
153-2807	SHOULDER BOLT - 5/16 X 2 (1/4-20) DUSTER PLUG	EACH
153-2808	SPRING - 0.42 OD X 1.25 (DUSTER PLUG)	EACH
153-2813	MS FLAT PHILLIPS - 10-32 X 3/4	EACH
153-2815	HHCS - 3/8-16 X 2-1/4 (GRADE 8)	EACH
153-2816	MS PHILLIPS - 8-32 X 2 (SS)	EACH
153-2817	FLAT HEAD PHILLIPS - 8-32 X 1/2	EACH
153-2818	HHCS - 3/8-16 X 2-1/2 (GRADE 8)	EACH
153-2819	SET SCREW - 5/16-24 X 3/8	EACH
153-6006	MOMENTARY LANE ROLLER SHAFT	EACH
153-6027	LDS ADJUSTMENT BLOCK	EACH
153-6029	MOMENTARY WHEEL HOUSING	EACH
153-6048-STK	STOCK - MACHINE HANDLE TRIM (BLACK)	INCH
153-6251M	SPRAY JET WALL MOUNTING ANGLE	EACH
153-6251S	SPRAY JET SWIVEL MOUNTING ANGLE	EACH
153-6252	SPRAY JET BODY	EACH
153-6412	DUSTER MOTOR SHIELD (7 RPM)	EACH
153-6412C	COVER FOR DUSTER MOTOR SHIELD	EACH
153-6417	GUIDE ROLLER MOUNT BLOCK	EACH
153-6419L	PIVOT ARM - DUSTER CUSHION ROLLER	EACH
153-6437	PUSH BUTTON MOUNTING PLATE	EACH
153-6825	DUSTER CLOTH ROUTING BAR (SS)	EACH
153-6850	UHMW DUSTER PLUG FOR CARDBOARD CORE	EACH
153-6851	UHMW HANDLE SPACER	EACH
153-6853	UHMW DUSTER PLUG FOR PVC TAKE-UP REEL	EACH
153-7002AA	LANE DISTANCE COUNTER WHEEL-TREADED (2")	EACH

KUSTODIAN PARTS LIST 12:02

PART NUMBER	PART DESCRIPTION	UOM
153-7013	URETHANE-BLEND LANE DRIVE WHEEL (4")	EACH
153-8039	BUFFER IDLER ASSEMBLY	EACH
153-8201B	DUSTER DRIVE HUB ASSEMBLY (1/4-28)	EACH
153-8202B	DUSTER SOLID DRIVE HUB (PVC-1/4-28)	EACH
153-8204	SQUEEGEE BLADE REPLACEMENT KIT (BLUE)	EACH
153-8206F	WATER PUMP-FLOJET 115V	EACH
153-8206H	WATER PUMP-FLOJET 230V	EACH
153-8207	BRAKE MOTOR ASSEMBLY (25 RPM-115 VOLT)	EACH
153-8311	MOMENTARY WHEEL ASSEMBLY (URETHANE)	EACH
153-8403	BRAKE MOTOR ASSEMBLY (7 RPM-115 VOLT)	EACH
153-8410	LANE EDGE GUIDE ROLLER W/BUSHING (1/2")	EACH
153-8803H	BRAKE MOTOR ASSEMBLY (7 RPM-230V 50 Hz)	EACH
153-8807H	BRAKE MOTOR ASSEMBLY (25 RPM-230V 50 Hz)	EACH
153-8827T	1-1/4 PVC ELBOW-TANK INLET (NO THREADS)	EACH
153-9001A	SPROCKET - 40B11 (3/4" BORE)	EACH
153-9003	SPROCKET - 40B10 (5/8" BORE)	EACH
153-9010	SPROCKET - 25B15 (TRANSFER DRIVE & LDS - 3/8")	EACH
153-9013	10LO50 PULLEY-1/2" BORE - BUFFER MOTOR	EACH
153-9014	BUFFER PULLEY (24LO50-3/4")	EACH
153-9023	FLANGED BUSHING (1/2 X 3/4 X 3/4)	EACH
153-9024A	PLAIN BUSHING (5/8 X 7/8 X 3/4)	EACH
153-9034	PLAIN BUSHING (3/8 X 1/2 X 1/4)	EACH
153-9035	PLAIN BUSHING (3/8 X 1/2 X 3/4)	EACH
153-9037	PLAIN BUSHING (1/2 X 3/4 X 3/4)	EACH
153-9045	25 MASTER LINK	EACH
153-9047	40 MASTER LINK	EACH
153-9051	CUSHION ROLLER PLUG WITH STUD	EACH
153-9402	FLANGED BUSHING (3/8 X 1/2 X 1/2)	EACH
153-9409	FLANGED BUSHING (1/4 X 3/8 X 1/4)	EACH
153-9803	FLANGED BUSHING (3/8 X 1/2 X 1/4)	EACH
153-9804	PRIMARY DRIVE CHAIN (40P35)	EACH
153-9806	TRANSFER ROLLER DRIVE CHAIN (25P59)	EACH
153-9808	FLANGED BUSHING (1/4 X 1/2 X 5/8)	EACH
154-0004	LIFTING HANDLES - SPRING LOADED	EACH
154-0006	BUMPER GUARD - POLYURETHANE (9/32)	EACH
154-0006A	BUMPER GUARD - POLYURETHANE (13/32)	EACH
154-0007	SPRAY TIP - STAINLESS STEEL (1501)	EACH
154-0031	5/16-24 ALLTHREAD STOCK-ZINC PLATE	INCH
154-0201A	VITON TUBING STOCK (3/8" OD X 1/4" ID)	INCH
154-0202	PUMP TUBING STOCK (3/8" OD X 1/4" ID)	INCH
154-0202A	PENCIL TUBING STOCK - 1/4" OD X 1/8" ID	INCH
154-0202B	PENCIL TUBING STOCK-3/16" OD X 1/16" ID	INCH
154-0204	YELLOW TYGON TUBING-1/2 OD X 3/8 ID	INCH
154-0206S	SPRING STOCK-3/8" OD X 0.041 WIRE	EACH
154-0210S	ROUND FELT STOCK (1/2" FOR 25 ml CYLINDERS)	INCH
154-0211	FILTER FOR OIL TANK VENT VALVE	EACH
154-0212	TANK FILTER (5" SS) FOR OIL TANK	EACH
154-0212B	FILTER FOR SUPPLY TANK (5" SS) PVC	EACH
154-0213	TIP FOR OIL PENCIL (1/8 BARB X 1/16")	EACH
154-0215	GRADUATED CYLINDER (25 ML)	EACH

KUSTODIAN PARTS LIST 12:02

PART NUMBER	PART DESCRIPTION	UOM
154-0221	BULKHEAD UNION - 1/4" TUBING	EACH
154-0222	ELBOW - 1/4" STEM x 1/4" TUBING OD	EACH
154-0223	ELBOW (90 DEGREE) - 1/4 NPT x 1/4" TUBE	EACH
154-0225	ELBOW - 3/8 TUBE OD x 1/4 NPT	EACH
154-0226	ELBOW-TUBE TO HOSE BARB (1/4" X 1/4 ID)	EACH
154-0227	ELBOW-TUBE TO HOSE BARB (1/4" X 5/16 ID)	EACH
154-0228S	STOCK - 1/8" GRAY FELT (SAE F3)	SQ INCH
154-0231	PLUG - 1/2" TUBE OD	EACH
154-0232	MALE CONNECTOR - 1/2" TUBE x 1/2 NPT	EACH
154-0242K	STOCK - VELCRO (2" WIDE HOOK WITH ADHESIVE)	INCH
154-0242L	STOCK - VELCRO (2" WIDE LOOP WITH ADHESIVE)	INCH
154-0243	ELBOW (90 DEGREE) 1/4 X 1/4 (GUEST)	EACH
154-0243S	STEM ADAPTER-1/4 NPT X 1/4" STEM	EACH
154-0248	REDUCING UNION CONNECTOR-1/4" X 3/16"	EACH
154-0255	IN-LINE FILTER (1/4 BARB X 1/4 BARB)	EACH
154-0256	ELBOW - 3/8 TUBE X 3/8 TUBE	EACH
154-0257	FEMALE CONNECTOR - 1/4" TUBE x 1/8 FPT	EACH
154-0258	ELBOW - 3/8 STEM X 3/8 TUBE	EACH
154-0260	FLEXIBLE HOSE STOCK FOR VACUUM (1-1/2" ID)	INCH
154-0262	SAFETY STICKER - COMMERCIALS FLUIDS ONLY	EACH
154-0263	SAFETY STICKER - DISCONNECT POWER	EACH
154-0264	SAFETY STICKER - USE CORD PROVIDED	EACH
154-0265	SAFETY STICKER - MOVING PARTS	EACH
154-0266	SAFETY STICKER - INTERNATIONAL SYMBOL	EACH
154-0269	SAFETY STICKER - GROUND LOCATION	EACH
154-0270	SAFETY STICKER - NO HANDS	EACH
154-0273C	CORD CONDUCTOR ID CARD-OLDFLEX	EACH
154-0274	START BUTTON STICKER	EACH
154-0277	HI-POT TESTED STICKER	EACH
154-0285	BULKHEAD UNION - 3/8	EACH
154-0293	MACHINE STICKER - SANCTION TECHNOLOGY	EACH
154-0294	MACHINE STICKER - KEGEL LOGO (BIRD)	EACH
154-0295	MACHINE STICKER - DBA LOGO	EACH
154-0296	MACHINE STICKER - BRUNSWICK LOGO	EACH
154-0410	FITTING - 3/8 TUBE X 3/8 NPT MALE	EACH
154-0412	ELBOW - 3/8 NPT X 1/4 TUBE	EACH
154-0603	STOCK - BUFFER BRUSH 48 X 3-3/4"	EACH
154-0605	STOCK - 1/8 X 1-3/4 ALUMINUM FLAT BAR	INCH
154-0606	HEAT SHRINK - 2"	EACH
154-0607	PVC ELBOW - 1-1/2 BARB X 1-1/2 BARB	EACH
154-0609	MAGNETIC CATCH FOR SPLASH GUARD	EACH
154-0610	SAFETY STICKER - DO NOT OVERFILL	EACH
154-0611	SAFETY STICKER - EMPTY TANK	EACH
154-0613	ELBOW - 1/8 NPT X 3/16 TUBE	EACH
154-0616	FUSE AND BREAKER STICKER - 115V	EACH
154-0618	STOCK - VELCRO (1" WIDE LOOP WITH ADHESIVE)	EACH
154-0801	KEYBOARD DECAL - KUSTODIAN	EACH
154-0803	ELBOW - 3/8 NPT X 3/8 TUBE	EACH
154-0804	LID LATCH - 1/4 TURN WITH SLOT	EACH
154-0805	LID LATCH - 1/4 TURN WITH FLANGE	EACH

KUSTODIAN PARTS LIST 12:02

PART NUMBER	PART DESCRIPTION	UOM
154-0806	SERIAL NAMEPLATE - KUSTODIAN	EACH
154-0807	FUSE PANEL STICKER	EACH
154-0808	TOGGLE SWITCH STICKER	EACH
154-0813	MACHINE STICKER - KUSTODIAN	EACH
154-0832	GARDEN HOSE FITTING CAP W/GASKET	EACH
154-0840	CLEANING BRUSH FOR SMOOTHER ASSY	EACH
154-0851	HANDLE PLUG (SQUARE)	EACH
154-1015	MICROSWITCH WITH ROLLER (DISTANCE COUNT)	EACH
154-1206	GEARBOX FOR HEAD DRIVE MOTOR (5:1 RATIO)	EACH
154-1208	MOTOR CAPACITOR (6.0 mF)	EACH
154-1208B	MOTOR CAPACITOR (1.5 mF)	EACH
154-1209	VALVE-24V DC 3-WAY (1/8" NPT)	EACH
154-1214	FLUID METERING PUMP (RH0CKC) - 0.05 ml/STROKE	EACH
154-1217	120V RELAY FOR SPEED CONTROL	EACH
154-1218	TRIMPOT FOR CIRCUIT BOARD (1K)	EACH
154-1219	TRIMPOT FOR CIRCUIT BOARD (2K)	EACH
154-1220	INDUCTIVE PROXIMITY SENSOR (TL-Q5MC1)	EACH
154-1225	PRESSURE GAUGE (0-30 PSI) - 1-1/2 DIA	EACH
154-1228A	BLACK LIGHT FLUORESCENT BULB (2 FT)	EACH
154-1231	CONNECTOR 6 CIRCUIT RECEPTACLE	EACH
154-1232	CONNECTOR 6 CIRCUIT FREE PLUG (MALE PIN)	EACH
154-1239	TERMINAL BLOCK-GRAY 2 COND (WAGO 261)	EACH
154-1240	TERMINAL BLOCK-BLUE 2 COND (WAGO 261)	EACH
154-1241	TERMINAL BLOCK-ORANGE 2 COND (WAGO 261)	EACH
154-1243	TERMINAL BLOCK-GRAY 4 COND (WAGO 261)	EACH
154-1244	TERMINAL BLOCK-BLUE 4 COND (WAGO 261)	EACH
154-1245	TERMINAL BLOCK-ORANGE 4 COND (WAGO 261)	EACH
154-1246	TERMINAL BLOCK-WHITE 4 COND (WAGO 261)	EACH
154-1247	END PLATE FOR TERMINAL BLOCK (WAGO 261)	EACH
154-1248	JUMPER BAR FOR TERMINAL BLOCK (WAGO 261)	EACH
154-1250	EMERGENCY STOP CIRCUIT BREAKER ASSEMBLY	EACH
154-1251	CIRCUIT BREAKER FOR E-STOP (10A NC)	EACH
154-1252	FORK TERMINAL - 22-18 AWG (#6 STUD)	EACH
154-1252A	FORK TERMINAL - 16-14 AWG (#6 STUD)	EACH
154-1254	PLUG ADAPTER - EUROPE	EACH
154-1255	FILTER - EMI SUPPRESSOR	EACH
154-1257	FERRITE EMI SUPPRESSOR	EACH
154-1260E	FUSE - TIME DELAY (GDC-315MA) IEC	EACH
154-1261	FUSE - TIME DELAY (0.5A MDL) UL	EACH
154-1261E	FUSE - TIME DELAY (GDC-500MA) IEC	EACH
154-1262	FUSE - TIME DELAY (0.75A MDL) UL	EACH
154-1264E	FUSE - TIME DELAY (GDC-1A) IEC	EACH
154-1266	FUSE - TIME DELAY (2.25A MDL) UL	EACH
154-1267E	FUSE - TIME DELAY (GDA-4A) IEC - CERAMIC	EACH
154-1268	FUSE - TIME DELAY (4A MDL) UL	EACH
154-1268C	FUSE - TIME DELAY (4A ABC) UL - CERAMIC	EACH
154-1268E	FUSE-TIME DELAY (GDA-4A) IEC	EACH
154-1269E	FUSE-TIME DELAY (GDA-6.3A) IEC	EACH
154-1270	FUSE - TIME DELAY (7.5A MDL) UL	EACH
154-1272	CIRCUIT BREAKER - DPST (10A)	EACH

KUSTODIAN PARTS LIST 12:02

PART NUMBER	PART DESCRIPTION	UOM
154-1273	FUSE - TIME DELAY FUSE (10A MDL)	EACH
154-1603	MICROSWITCH - WITHOUT ROLLER (LARGE - STD)	EACH
154-1606	STOCK - HEAT SHRINK TUBING (1-1/8)	INCH
154-1607	RT ANGLE FEMALE QUICK DISC-3/16 (22-18)	EACH
154-1608	RT ANGLE FEMALE QUICK DISC-3/16 (16-14)	EACH
154-1610	CIRCUIT BREAKER - DPST (15A)	EACH
154-1648	WIRE TIE - 6"	EACH
154-1801	MICROPROCESSOR - CPM2A-40	EACH
154-1803	CABLE FOR NT2-S	EACH
154-1807	PIN & SOCKET CONNECTOR 15 CIRCUIT FREE RECEPTACLE	EACH
154-1808	PIN & SOCKET CONNECTOR 15 CIRCUIT FREE PLUG (MALE PINS)	EACH
154-1811	TOGGLE SWITCH SPDT (ON-OFF-ON)	EACH
154-1830	RELAY BASE SEPARATOR PLATE	EACH
154-1831	RED BRIDGE JUMPER (PHOENIX CONTACT)	INCH
154-1832	GREY BRIDGE JUMPER (PHOENIX CONTACT)	INCH
154-1835	COMPLETE RELAY ASSEMBLY - PHOENIX PLC SERIES	EACH
154-4700S	OPERATORS MANUAL - KUSTODIAN MODEL C	EACH
154-6021	DRIVE SHAFT END PILLOWBLOCK	EACH
154-6041	UHMW HANDLE STOP	EACH
154-6042	UHMW WHEEL - CORNER GUARD	EACH
154-6221	MOUNTING ANGLE - HEAVY DUTY CASTER (3 x 3.625)	EACH
154-6222	MOUNTING ANGLE - HEAD DRIVE MOTOR	EACH
154-6223A	MOUNTING ANGLE - PUMP & MOTOR (#4-LEFT)	EACH
154-6243	MOTOR CAM-DUAL LOBES (STACKED SWITCHES)	EACH
154-6248	CLAMP FOR PVC TAKE-UP REEL	INCH
154-6252	CATCH PLATE FOR ELECTRICAL LID	EACH
154-6257	PRESSURE GAUGE MOUNT ANGLE	EACH
154-6264	SHAFT FOR TIMING DISK (REMOTE SENSOR)	EACH
154-6270	SPACER FOR LDC SENSOR (3/16" ALUMINUM)	EACH
154-6273	MOUNTING ANGLE FOR E-STOP	EACH
154-6287	GUARD FOR PUMP & MOTOR	EACH
154-6301-2915	FLOOR PLATE (PAINTED)	EACH
154-6304-2915	FRONT WALL (PAINTED)	EACH
154-6305-2915	CENTER TANK WALL (PAINTED)	EACH
154-6307-2915	CENTER TRANSFER WALL (PAINTED)	EACH
154-6339-2915	SQUEEGEE MOUNT ANGLE ASSEMBLY (PAINTED)	EACH
154-6341-2915	PC RELAY MOUNTING PLATE	EACH
154-6342-2915	LEFT SIDE PLATE (PAINTED)	EACH
154-6343-2915	RIGHT SIDE PLATE (PAINTED)	EACH
154-6346-2915	REAR WALL (PAINTED)	EACH
154-6356	MOUNT BLOCK FOR LATCH	EACH
154-6357	LATCH FOR SPLASH GUARD	EACH
154-6613	VACUUM MOTOR HOUSING	EACH
154-6614	LDS SENSOR GUARD	EACH
154-6622	BRUSH PAD BASE BLOCK	EACH
154-6626A	TRANSFER ASSEMBLY ADJUSTMENT ANGLE	EACH
154-6627	SIDE LIFT HANDLE	EACH
154-6628	CASTER/HANDLE MOUNT ANGLE	EACH
154-6629	SIDE LIFT HANDLE MOUNT	EACH
154-6633	TRANSFER ROLLER PLUG	EACH

KUSTODIAN PARTS LIST 12:02

PART NUMBER	PART DESCRIPTION	UOM
154-6641	LDS SENSOR MOUNT TOP PLATE	EACH
154-6642	LDS SENSOR QUICK MOUNT FRONT PLATE	EACH
154-6646	HEAD BELT MOUNT PLATE	EACH
154-6647A	SLIDING HEAD BAR	EACH
154-6651	FRONT GUIDE ROLLER MOUNT	EACH
154-6652	GUIDE ROLLER MOUNT BLOCK	EACH
154-6661	TRANSFER ROLLER SHAFT	EACH
154-6664	BUFFER BRUSH PULLEY SPACER	EACH
154-6665	HEAD TIMING SHAFT	EACH
154-6669	SQUEEGEE CAM GUARD	EACH
154-6670	SQUEEGEE CAM	EACH
154-6672A	SLIDING HEAD	EACH
154-6674	FLOOR PLATE MOUNT ANGLE	EACH
154-6675	OIL TANK MOUNT ANGLE	EACH
154-6677	SQUEEGEE HOSE ADAPTER	EACH
154-6679	BUFFER/HEAD DRIVE GUARD	EACH
154-6687	SPRING RETAINER PLATE	EACH
154-6696	TIP AND HOSE HOLDER	EACH
154-6697	LID MOUNT SCREW PLATE	EACH
154-6698	LID MOUNT PLATE	EACH
154-6715	TACHOMETER SENSOR GUARD	EACH
154-6717	5-TOOTH SENSOR DISK - ALUMINUM (3/8 BORE)	EACH
154-6723	POLY CLEANER SUPPLY TANK W/SPIN WELD	EACH
154-6726	POLY CONDITIONER SUPPLY TANK W/SPIN WELD	EACH
154-6811	MAIN DRIVE SHAFT GUARD	EACH
154-6812	RIGHT PARTITION WALL	EACH
154-6815	BRUSH PAD TOP PLATE	EACH
154-6818	HEAD SENSOR GUARD	EACH
154-6820	MAIN DRIVE SHAFT	EACH
154-6821	LDS SHAFT - KUSTODIAN	EACH
154-6823	SMOOTHER MOUNTING ANGLE	EACH
154-6824	BRUSH CAM SWITCH PLATE	EACH
154-6825	HEAD MOUNT BAR (NYLON)	EACH
154-6827	PC RELAY MOUNT PLATE ANGLE	EACH
154-6829	MOUNTING PLATE - HEAD TIMING SENSORS	EACH
154-6831	6-TOOTH SENSOR DISK - ALUMINUM	EACH
154-6832	OIL PENCIL TIP - ALUMINUM	EACH
154-6833	SKID GUIDE	EACH
154-6841	BUFFER IDLER MOUNT BAR	EACH
154-8007	SIDE PLATE PILLOWBLOCK FOR DRIVE SHAFT	EACH
154-8206	TRANSFER ROLLER MOTOR - 25 RPM (115V)	EACH
154-8206A	TRANSFER ROLLER MOTOR - 25 RPM (230V)	EACH
154-1207B	MOTOR CAPACITOR (4.0 MF)	EACH
154-8232	HEAD DRIVE MOTOR - 115V (NO GEARBOX)	EACH
154-8246	FILTER ASSEMBLY FOR VENT VALVE	EACH
154-8267	FILTER ASSEMBLY (IN-LINE) FOR OIL SUPPLY LINE (OPTIONAL)	EACH
154-8320	PILLOWBLOCK - LANE DISTANCE SHAFT (CENTER-PLAIN)	EACH
154-8604	CONDITIONER PUMP MOTOR -115V	EACH
154-8604E	CONDITIONER PUMP MOTOR - 230V	EACH
154-8607	SQUEEGEE & DUSTER SWITCH GUARD (WITH FELT)	EACH

129
10/8

KUSTODIAN PARTS LIST 12:02

PART NUMBER	PART DESCRIPTION	UOM
154-8608	TRANSFER ROLLER ASSEMBLY	EACH
154-8609	TRANSFER ROLLER MOUNTING ARM (LEFT)	EACH
154-8610	TRANSFER ROLLER MOUNTING ARM (RIGHT)	EACH
154-8616A	BUFFER MOTOR (115V-AC ONLY)	EACH
154-8616E	BUFFER MOTOR (230V-AC ONLY)	EACH
154-8617	PATTERN SMOOTHING PAD ASSEMBLY	EACH
154-8617V	VELCRO STOCK-SMOOTHING PAD (2" X 4.25")	EACH
154-8619	PILLOWBLOCK-LANE DISTANCE (LEFT-FLANGED)	EACH
154-8621	PILLOWBLOCK-LANE DISTANCE (RIGHT-FLANGE)	EACH
154-8624	BUTTON ASSEMBLY FOR THE HANDLE	EACH
154-8625	VACUUM MOTOR HOUSING - ALUMINUM	EACH
154-8627	FELT DRIP PAD - LEFT SIDE	EACH
154-8628	FELT DRIP PAD - RIGHT SIDE	EACH
154-8632	HEAD DRIVE MOTOR-230V (NO GEARBOX)	EACH
154-8637	BUFFER BRUSH LIFTING ASSEMBLY	EACH
154-8638	BUFFER BRUSH LIFTING LINK - LEFT	EACH
154-8639	BUFFER BRUSH LIFTING LINK - RIGHT	EACH
154-8640	FLANGED BEARING-STD BRUSH (3/4" ROTATED)	EACH
154-8641	BUFFER BRUSH-STANDARD (BLUE 3-3/4" X 48)	EACH
154-8643	MOUNTING BLOCK FOR TIMING PULLEY-STD	EACH
154-8647	FUNNEL - CLEANER SUPPLY TANK (ST)	EACH
154-8648	FUNNEL - CONDITIONER TANK	EACH
154-8660	PULSE SUPPRESSER KIT - PUMP TO METERING VALVE	EACH
154-8669	FELT KIT FOR TRANSFER COMPARTMENT	EACH
154-8683	POLYETHYLENE RECOVERY TANK (2002)	EACH
154-8800	SPARE PARTS KIT (115V)	EACH
154-8800E	SPARE PARTS KIT (230V)	EACH
154-8801	SQUEEGEE ADJUSTMENT ARM - LEFT	EACH
154-8802	SQUEEGEE ADJUSTMENT ARM - RIGHT	EACH
154-8803	DRIVE SHAFT PILLOWBLOCK (FLANGED)	EACH
154-8804	MAIN DRIVE SHAFT GUARD ASSY	EACH
154-8805	VACUUM MOTOR ASSEMBLY - 115V	EACH
154-8805E	VACUUM MOTOR ASSEMBLY - 230V	EACH
154-8806	KEYPAD ASSEMBLY	EACH
154-8810	CIRCUIT BOARD ASSEMBLY (115V)	EACH
154-8811	CIRCUIT BOARD ASSEMBLY (230V)	EACH
154-8813	LID ASSEMBLY	EACH
154-8817	MANUAL VENT VALVE ASSEMBLY	EACH
154-8818	SPLASH GUARD ASSEMBLY	EACH
154-8823	HANDLE ASSEMBLY	EACH
154-8824	BUTTON ASSEMBLY FOR HANDLE	EACH
154-8829	POWER CORD ASSEMBLY - 115V (NO KILL)	EACH
154-8830	POWER CORD ASSEMBLY - 230V (NO KILL)	EACH
154-8837	CAM TO BRUSH LIFTING ROD LINK ASSEMBLY	EACH
154-8839	BUFFER IDLER ASSEMBLY	EACH
154-8840	CLEANER SUPPLY TANK (COMPLETE)	EACH
154-8842	CONDITIONER TANK ASSEMBLY (COMPLETE)	EACH
154-8865	BALDOR DC DRIVE MOTOR ASSEMBLY	EACH
154-8867	IN-LINE FILTER KIT	EACH
154-9201	TIMING BELT (XL025) - 9 FEET	FOOT

KUSTODIAN PARTS LIST 12:02

PART NUMBER	PART DESCRIPTION	UOM
154-9202A	BELT FOR METERING PUMP (130XL037) 60 Hz	EACH
154-9204	PULLEY - HEAD IDLER (32XL-1/4" BORE-W/SET)	EACH
154-9205B	PULLEY - HEAD DRIVE MOTOR (28XL 3/8") 50 Hz	EACH
154-9205D	PULLEY - HEAD DRIVE MOTOR (24XL-3/8")	EACH
154-9208	PULLEY - METERING PUMP (12XL-5/16)	EACH
154-9211	LDS AND TACH SENSOR DRIVE CHAIN (25P29)	EACH
154-9212	PLAIN BUSHING (3/8 X 1/2 X 1/2)	EACH
154-9213	SPROCKET-25B15 (1/2")	EACH
154-9602	TRANSFER DRIVE CHAIN (25P51)	EACH
154-9607	PULLEY (24XL 5/16" BORE W/SET)	EACH
154-9615	T-BELT 255L050 (BUFFER MOTOR)	EACH

KUSTODIAN

Notes