



Installation Instructions

PART NUMBER	164-8822	
PART DESCRIPTION	CUSHION ROLLER ARM KIT FOR STUD MOUNT	
REV DATE	4/10/20	
MACHINE MODELS	FLEX/FLEX WALKER	

TOOLS NEEDED	PARTS
RATCHET & 7/16" SOCKET 7/16" WRENCH (2) 3/4" WRENCH PHILLIPS SCREWDRIVER 11/32" NUT DRIVER	(2) 164-8823 CUSHION ROLLER ARM FOR STUD MOUNT
TECHNICAL NOTE	
Please thoroughly read the instructions prior to performing the installation of this assembly. To avoid any potential problems, if at any time during the process you have a question, stop, and contact our Tech Support department at the numbers listed below.	

STEPS

- 1) Disconnect power to machine and stand the machine up in the transport position.
- 2) Remove the right and left side machine guards. For the Flex machine, you will remove (5) screws and for the Walker you will remove (4) screws total. It is not necessary to remove the smaller upper guard on the Flex.
- 3) Remove the 8-32 x 5/8" screws that secures the front of the black flap to the Whisker Mounting Bar on both sides.
- 4) Using the (2) 3/4" wrenches, loosen and remove the lane-to-lane casters on both sides and remove the flaps.



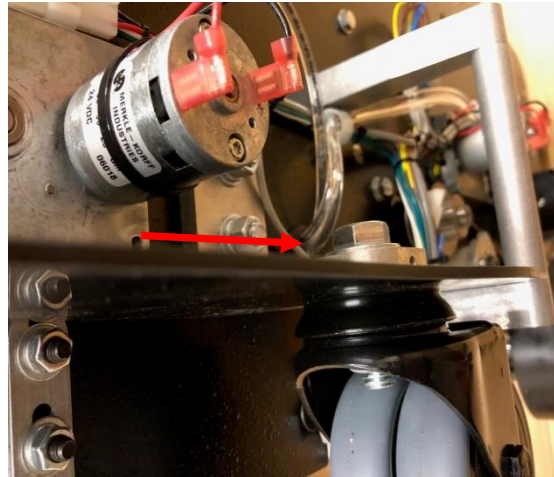
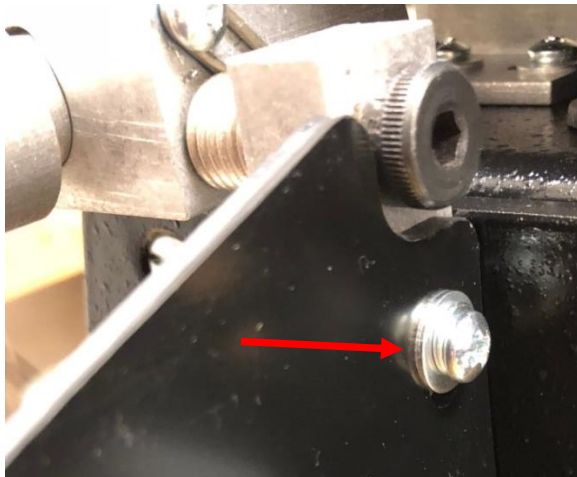
Within USA - 1-800-280-2695
 Outside USA - +1 863-734-0200
www.kegel.net
 E-Mail: tech@kegel.net

Rev. 9/20





Installation Instructions

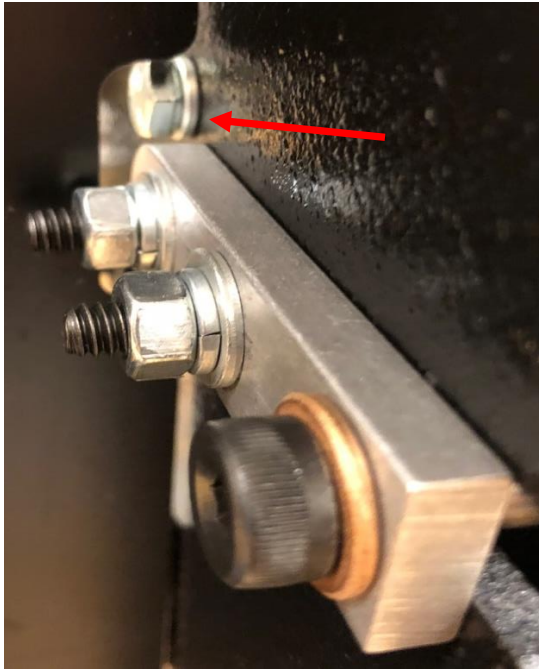


- 5) Loosen the Duster Cloth to allow for plenty of slack around the Cushion Roller.
- 6) Remove the stover nut from the existing Cushion Roller Pivot Arm shoulder bolt on either side of the machine.
- 7) Remove the shoulder bolt from the pivot arm.
- 8) From the underside of the machine, carefully remove the Cushion Roller by pulling it towards you and out of the pivot arm on the opposite side where it is still mounted to the frame. Make sure whatever nylon washers were installed on the Cushion Roller plug studs stay on the roller during removal.
- 9) Place a 153-1014 ¼" lock-washer onto one of the 153-2603 ¼-20 x ¾" bolts included in the kit. Push the bolt through the hole in the side plate where the shoulder bolt was removed. On the inside of the frame plate, place one of the ¼" flat washers on the bolt threads. Push the 164-6175 Cushion Roller Stud through the new 164-8823 Cushion Roller Arm and screw the stud onto the bolt until tight.
- 10) Remove the stover nut from the existing Cushion Roller Pivot Arm shoulder bolt on the opposite side of the machine.
- 11) Remove the shoulder bolt from the pivot arm and slide the old Cushion Roller Arm out of the machine.
- 12) Reinstall the cushion roller into the new Cushion Roller Arm already installed. Make sure all of the nylon washers that were on the roller stay on the plugs.





Installation Instructions



- 13) Place the other 153-1014 1/4" lock washer onto the 153-2603 1/4-20 x 3/4" bolt included in the kit. Push the bolt through the hole in the side plate where the shoulder bolt was removed. On the inside of the frame plate, place one of the 1/4" Flat Washers on the bolt threads. Install the other Cushion Roller Arm onto the Cushion Roller plug. Push the 164-6175 Cushion Roller Stud through the new 164-8823 Cushion Roller Arm and screw the stud onto the bolt until tight.
- 14) On each side, push the Cushion Roller arm towards the microswitch so that the screw head activates the switch when the roller is in the wind-up position. Adjust screw so there is small amount of play between the arm and the housing after the switch is activated. Tighten the 8-32 jam nut against the underside of the arm using the 11/32" nut driver.
- 15) Re-install the flaps on both sides (8-32 x 5/8" screw and casters mounting bolts).
- 16) Reinstall the machine guards on both sides.
- 17) Using the appropriate unwind and wind-up outputs, test the cushion roller for proper operation.

