



INSTALLATION INSTRUCTIONS

PART NUMBER	154-8520
PART DESCRIPTION	MACHINE LIFT ASSIST BRACKET KIT
REV DATE	9/22/17
MACHINE MODELS	SEE BELOW



Basic knowledge of the lane machine including mechanical and electrical

TOOLS NEEDED:

Drill

3/8 Drill Bit

Hammer

Punch

9/16 Wrench

Small Saw



TECHNICAL NOTE

Please thoroughly read the instructions prior to performing the installation of this assembly.

To avoid any potential problems, if at any time during the process you have a question, stop and contact our Tech Support department at the numbers listed below.

Please visit our growing library of videos to see if these instructions are available!



www.youtube.com/user/KegelBowling81

Kegel's Lane Maintenance Central:
Within USA - 1-800-280-2695
Outside USA - +1 863-734-0200
via e-mail at LMC@Kegel.net
website www.kegel.net



MODELS:

Option 1:

Lanewalker	-	17-3000
Lanewalker LCM	-	17-3500
Sanction L2L	-	17-4500

Option 2:

Phoenix	-	17-3800
Phoenix S	-	17-3800S

Option 3:

Phoenix	-	17-4200
Sanction Standard	-	17-4300
Kustodian	-	17-4700

Phoenix S	-	17-4400
Standard Elite	-	17-4800

Option 4:

Crossfire	-	17-5200
-----------	---	---------

Option 5:

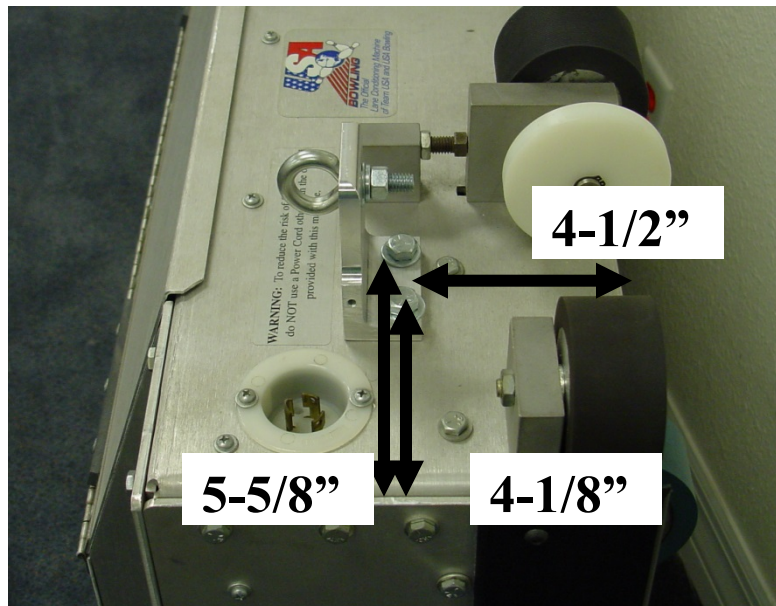
ALL machines with Plastic guards		
Elite Plus	-	17-5300
Kustodian ION	-	17-5400
Kustodian Walker	-	17-5500

Option 6:

Flex	17-5700
Flex Walker	17-5800
Ikon	17-5900

Option 1

From the side of the machine, measure 4-1/8" and 5-5/8", as shown below. Then from bottom of machine measure up 4-1/2" and drill two 3/8" holes on both sides of machine and mount the angle according to picture below using fasteners provided in kit.

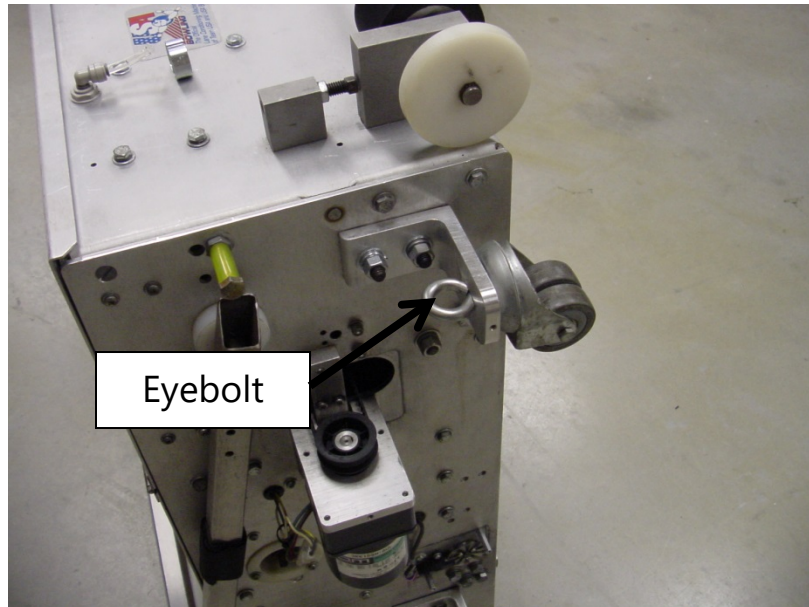


Kegel's Lane Maintenance Central:
Within USA - 1-800-280-2695
Outside USA - +1 863-734-0200
via e-mail at LMC@Kegel.net
website www.kegel.net



Option 2

With the lane machine in the transport position remove the casters from the mounting angles and then remove the caster angle mounting angles. Install the new mounting angles from the kit. Insert the eyebolt from the kit into the new caster angle and fasten the caster wheel onto the bracket as shown below.



Option 3

Measure in 1-1/4" from end of lift handle and 7/8" from each side of handle mount so that the drill point is in the middle of the caster mount bar, drill a 3/8" hole in both the left and right side lift handles. After drilling the holes, locate the eyebolts from the kit and fasten them into place from the top of the mounting bracket as indicated below.



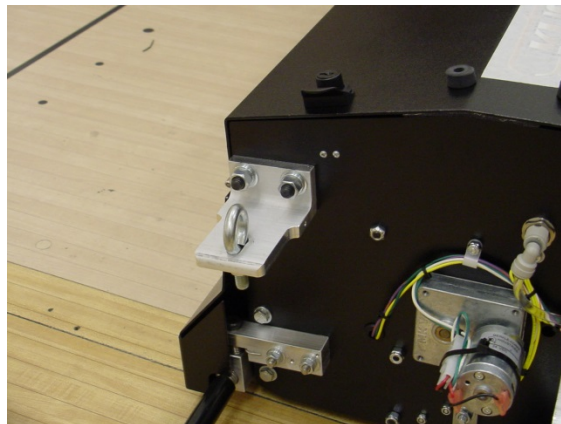
Option 4

Measure in 1-3/16" from end of lift handles, 1/2" from each side so that the drill point is centered in the mounting bar. Drill a 3/8" hole in both side lift handles. After drilling the holes, locate the eyebolts from the kit and fasten them into place from the top of the mounting bracket as indicated below.



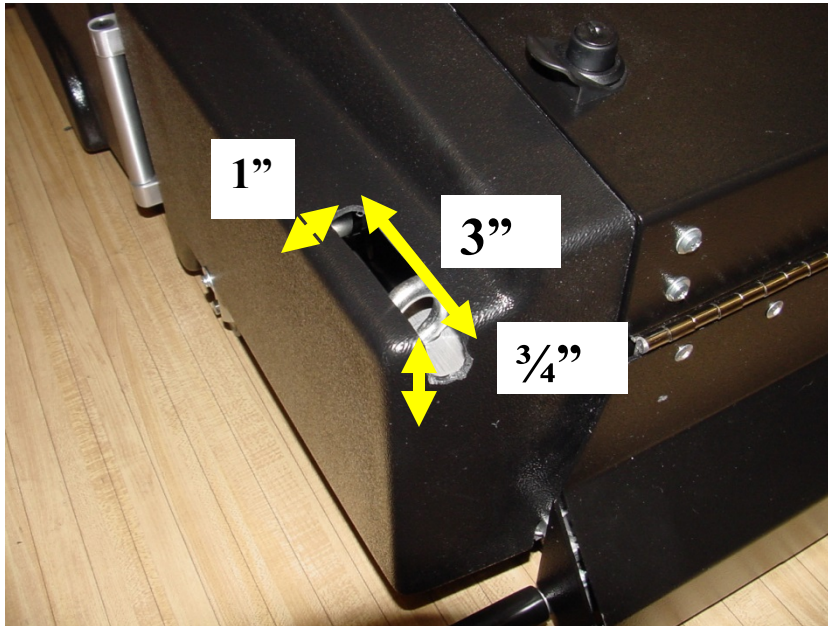
Option 5

Lay the machine down in the operating position and remove the plastic guards to access the side plates. Using the paper template provided in the kit, align the drawing to match the contour of the frame. Using a punch and a hammer, and mark the drill points. Do this on both sides of machine. After drilling the 3/8" holes, using the fasteners provided in the kit, fasten the mounting angle according to picture below. Before closing the cleaner lid assembly, you must REMOVE THE BLACK ALIGNING BLOCKS on lid. To put plastic guards back on refer to step 6.



Option 5 Continued

You must cut a slot in cover before reinstalling to machine. Mark drill points according to picture below and drill 5/8" hole at each spot then cut out with small saw to make slot.



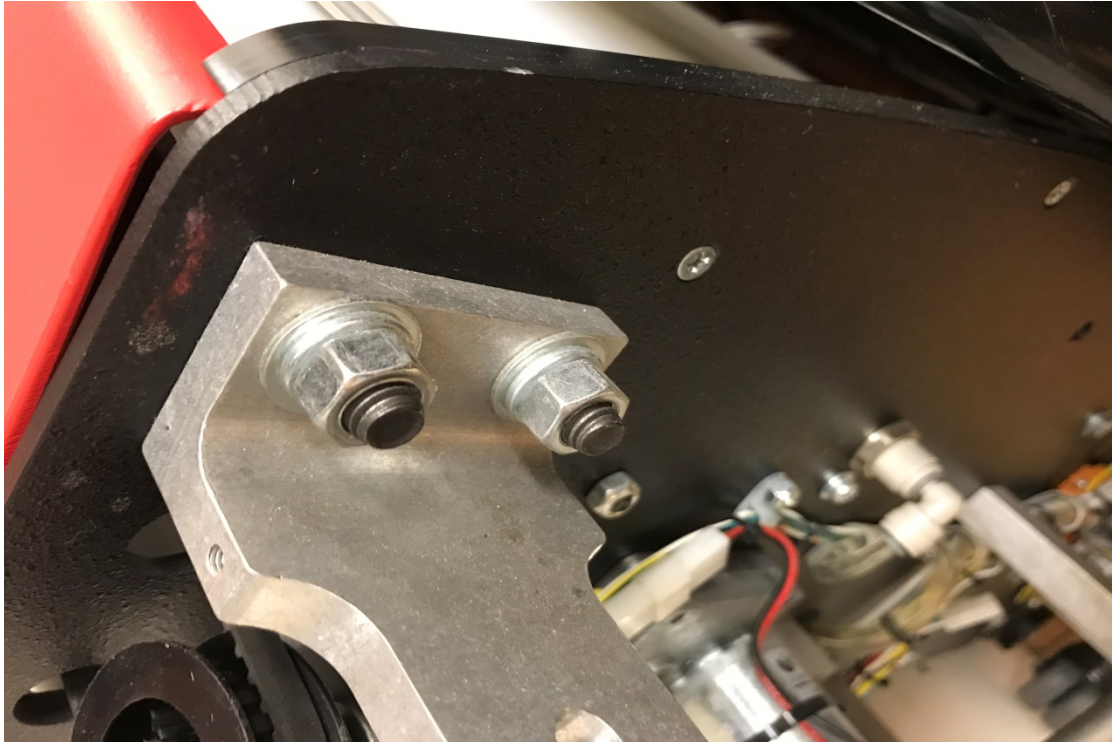
Option 6

Remove the plastic guards to access the side plates, locate the two 3/8" holes in the frame do this on both sides of machine. Using the fasteners provided in the kit, fasten the mounting angle according to picture below. Now locate the cut out template and cut the hole in each guard using the template provide with the kit. See pictures below as a reference if needed.



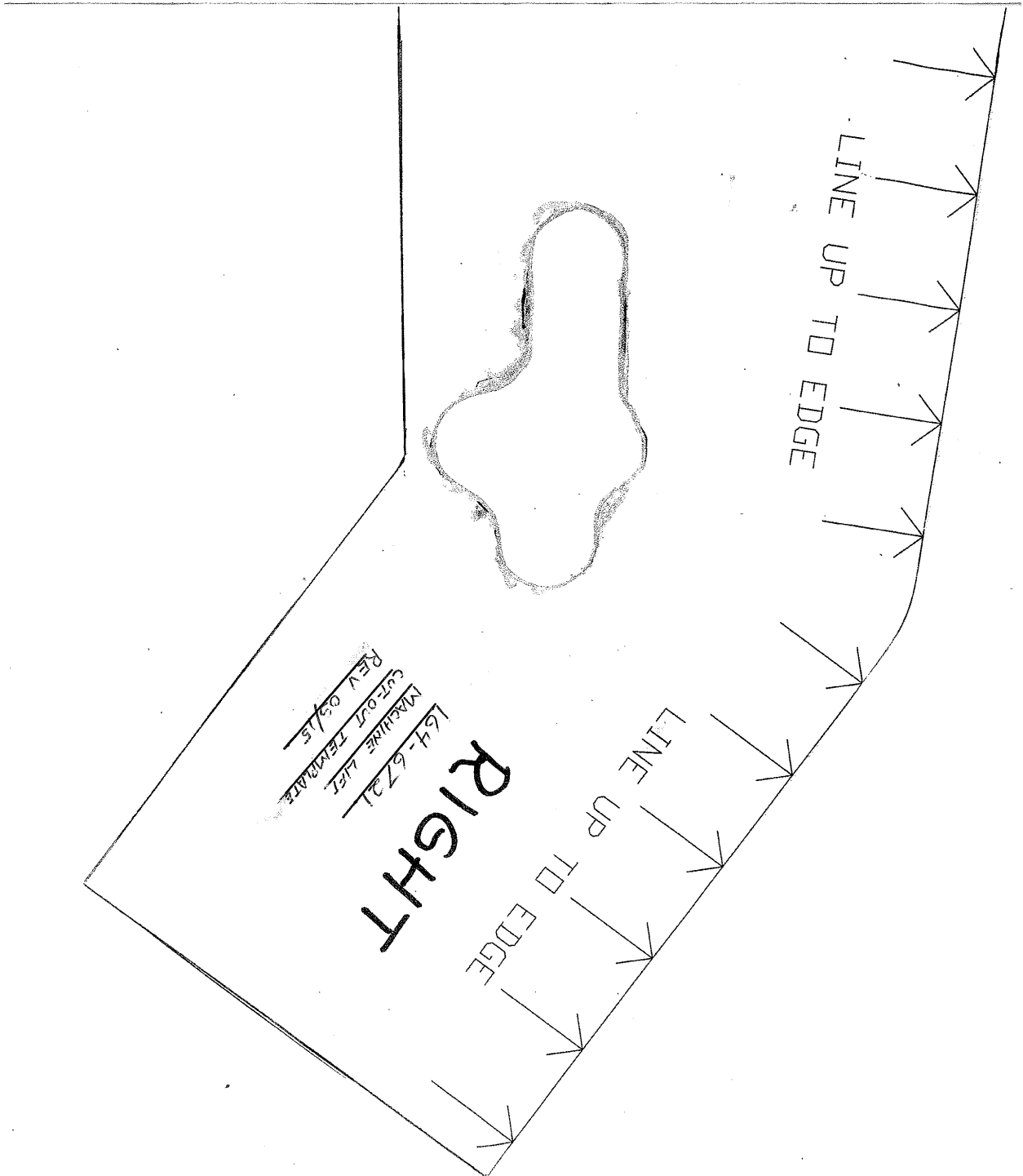
Kegel's Lane Maintenance Central:
Within USA - 1-800-280-2695
Outside USA - +1 863-734-0200
via e-mail at LMC@Kegel.net
website www.kegel.net





Kegel's Lane Maintenance Central:
Within USA - 1-800-280-2695
Outside USA - +1 863-734-0200
via e-mail at LMC@Kegel.net
website www.kegel.net





Kegel's Lane Maintenance Central:
Within USA - 1-800-280-2695
Outside USA - +1 863-734-0200
via e-mail at LMC@Kegel.net
website www.kegel.net

