



INSTALLATION INSTRUCTIONS

PART NUMBER	164-8210
PART DESCRIPTION	CVR REPLACEMENT
REV DATE	4/14/2020
MACHINE MODELS	FLEX/FLEX WALKER 2016 CURRENT



Basic knowledge of the operation of the lane machine

TOOLS NEEDED:

Phillips Screwdriver

Wire Cutters

3/8" Wrench



TECHNICAL NOTE

Please thoroughly read the instructions prior to performing the installation of this assembly.

To avoid any potential problems, if at any time during the process you have a question, stop and contact our Tech Support department at the numbers listed below.

Please visit our growing library of videos to see if these instructions are available!



www.youtube.com/user/KegelBowling81

KEGEL TECH SUPPORT:

Within USA - 1-800-280-2695

Outside USA - +1 863-734-0200

via e-mail at LMC@Kegel.net

website www.kegel.net



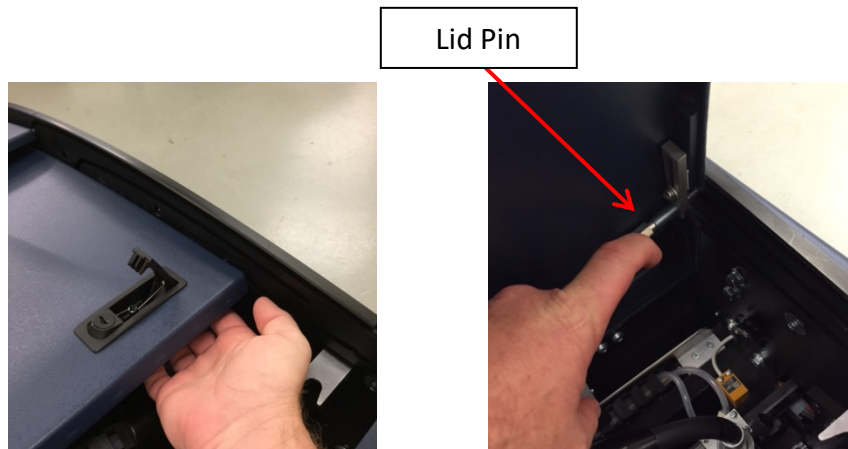
With the machine in the upright position, remove the right side guard assembly. (10 pin side). For the Flex you will remove 5 screws and the 4 for the Flex Walker.

To access the CVR you must first remove the lid assemblies

Conditioner Compartment Lid Removal

To remove the lid, set the machine down in the operating position.

1. Slide the conditioning compartment lid back as shown in the pic below left.
2. Reach your hand under the lid and locate the Lid Pin Ring and pull the spring-loaded pin from the pin guide. Do the same for the 7-side.
3. Tilt the lid assembly up as shown on the right and pull the spring-loaded pin back and lift lid out of the guides.



Cleaning Compartment Lid Removal

To remove the lid set the machine down in the operating position.

1. While in the operating position, stand facing the lane machine from the cleaner compartment side and push the lid until it stops. Then reach under each side and pull the pins so the lid will slide the rest of the way back.
2. Standing in rear of the machine, lift the cleaner lid assembly up and out of the rear guide opening. Pull the back of the lid towards you and lift the rear portion up and out of the guide openings as well.

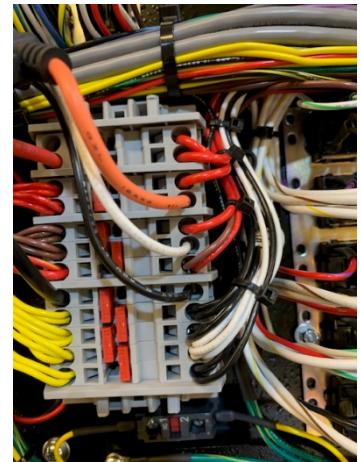


1. Remove the 3 screens that fasten the clear cover (circled in red).
2. Once the clear cover is removed, unfasten the 3 screws along the back of the electrical panel (arrows are pointing to them).

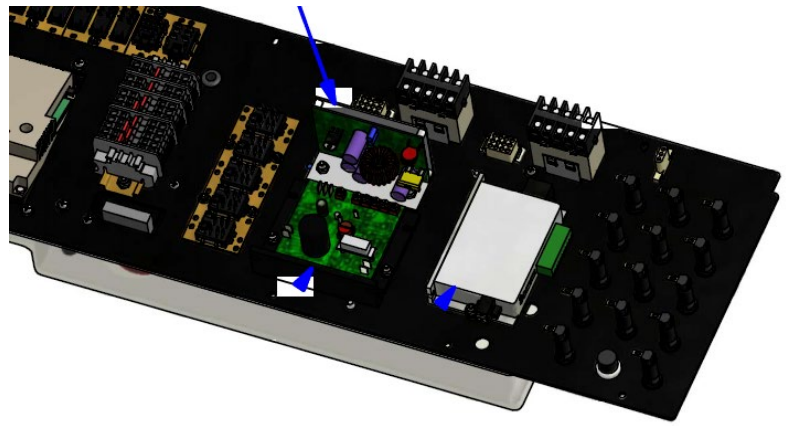


Now you are able to tilt the electrical panel up so that you can see the underside of the electrical panel.

3. Remove the existing wires from the Wago block. If unable to locate them, simply trace them back from the old CVR.

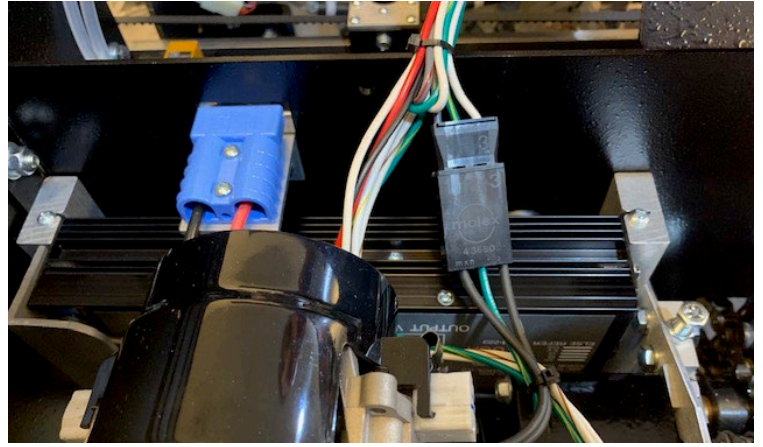


4. Remove the old CVR from the bottom of the panel as shown.



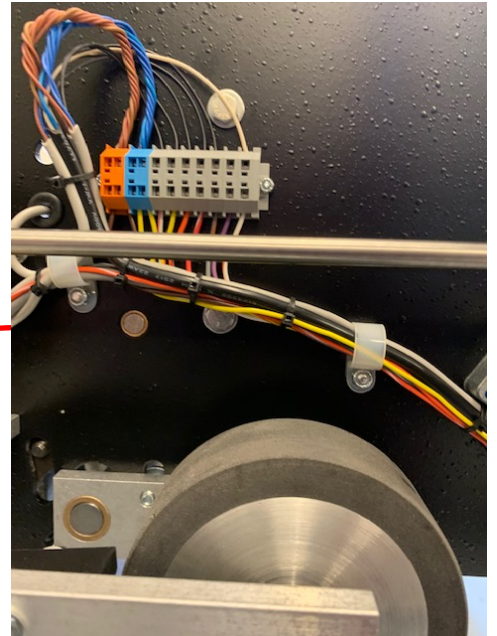
Installing the new CVR

5. Remove the blue charging plug and bracket assembly that is mounted on the interior wall.



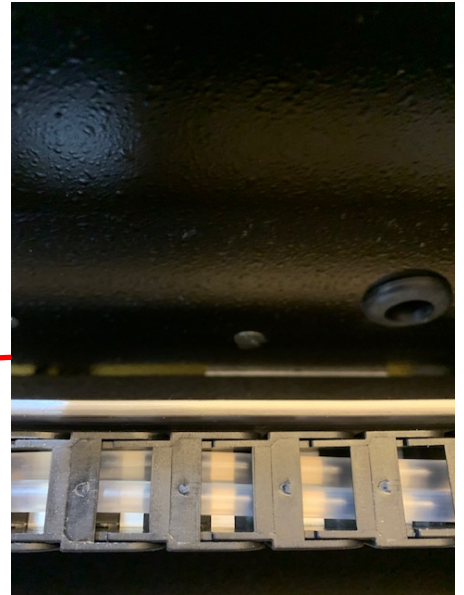
6. Remove the 1/4-20 x 7/8" bolt located just under the Wago block.

REMOVE



7. Remove the 1/4-20 x 5/8" countersunk screw from the interior wall. Save for re-installment.

REMOVE



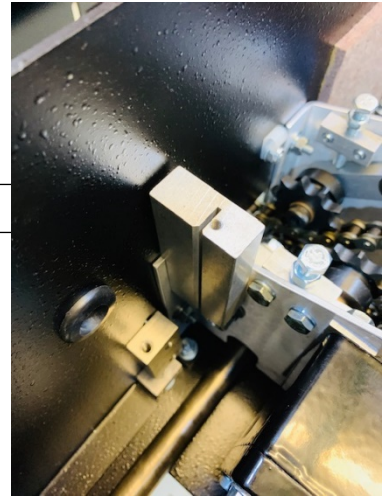
8. Take the block with the notch in it and place on top of the plate inside the machine as shown.

NOTCH 

9. Take the bolt that was removed in step 7 and place back into the original hole and thread into the block and tighten.



NOTCH



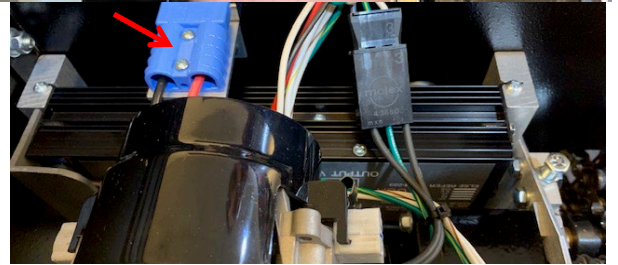
10. Using the bolt that was removed in step 6, tighten the other block to the side of the frame as shown,



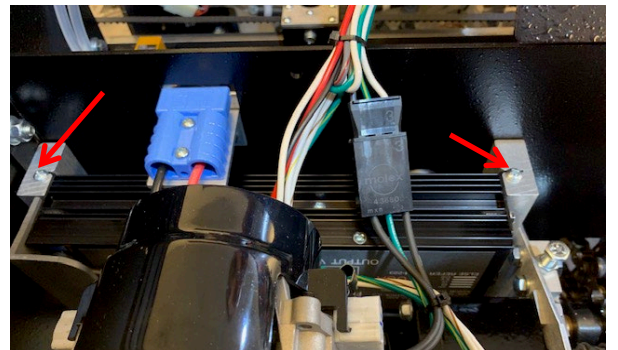
11. Slide the CVR into the slots in the blocks.



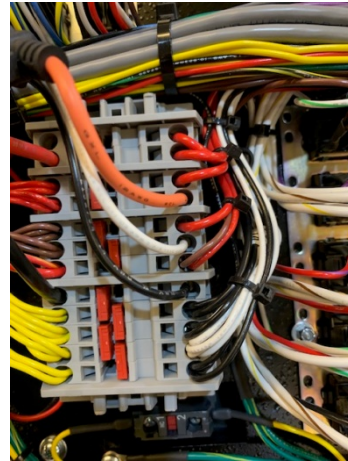
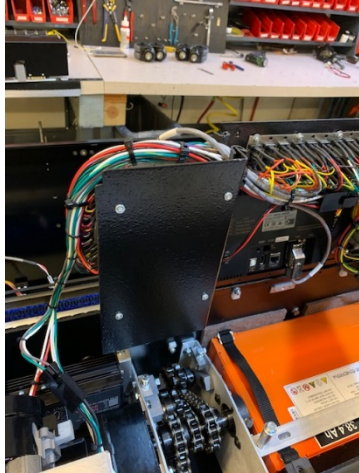
12. Reinstall the charging plug and bracket assembly that was removed in step 5.



13. Install the two phillips screws that are in the kit. These will be used to hold the CVR in place.



14. Route the wires in the bundle with the vac motor wires. Route them over to where the old CVR wires were.



15. Put the Electrical panel back down and guards and lids back on. Power up the machine and run the machine.