



Rev.02-12-2020

### Pit Conveyor Frame Threaded Hole Repair

Part No. **PPP-PCTHR**

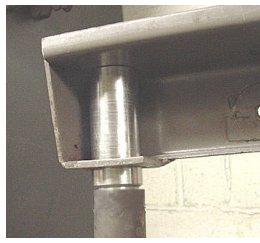


Measuring 3 inches from top, mark and remove tube-end to be replaced.

Insert Threaded Hole Repair. Place pit board clamp onto frame and lightly secure all 3 positions in preparation for welding.

Before welding, re-access dimensions for desired length and further alter frame tube with hand grinder, if needed.

A 1/8<sup>th</sup> to 3/16<sup>th</sup> gap between tube and repair is sufficient for welding but does not have to be perfect as tube-insert length allows room for error.



Rev.02-12-2020

### Pit Conveyor Frame Threaded Hole Repair

Part No. **PPP-PCTHR**

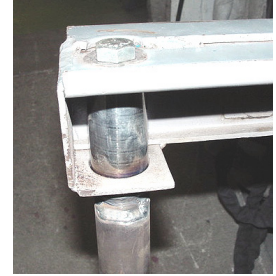
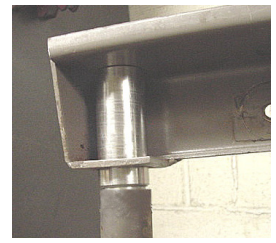


Measuring 3 inches from top, mark and remove tube-end to be replaced.

Insert Threaded Hole Repair. Place pit board clamp onto frame and lightly secure all 3 positions in preparation for welding.

Before welding, re-access dimensions for desired length and further alter frame tube with hand grinder, if needed.

A 1/8<sup>th</sup> to 3/16<sup>th</sup> gap between tube and repair is sufficient for welding but does not have to be perfect as tube-insert length allows room for error.



Rev.02-12-20

### Pit Conveyor Frame Threaded Hole Repair

Part No. **PPP-PCTHR**

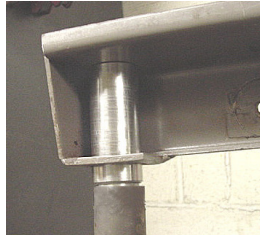


Measuring 3 inches from top, mark and remove tube-end to be replaced.

Insert Threaded Hole Repair. Place pit board clamp onto frame and lightly secure all 3 positions in preparation for welding.

Before welding, re-access dimensions for desired length and further alter frame tube with hand grinder, if needed.

A 1/8<sup>th</sup> to 3/16<sup>th</sup> gap between tube and repair is sufficient for welding but does not have to be perfect as tube-insert length allows room for error.



Rev.02-12-2020

### Pit Conveyor Frame Threaded Hole Repair

Part No. **PPP-PCTHR**

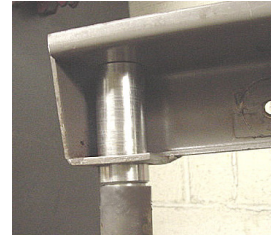


Measuring 3 inches from top, mark and remove tube-end to be replaced.

Insert Threaded Hole Repair. Place pit board clamp onto frame and lightly secure all 3 positions in preparation for welding.

Before welding, re-access dimensions for desired length and further alter frame tube with hand grinder, if needed.

A 1/8<sup>th</sup> to 3/16<sup>th</sup> gap between tube and repair is sufficient for welding but does not have to be perfect as tube-insert length allows room for error.



Rev.02-12-2020

### Pit Conveyor Frame Threaded Hole Repair

Part No. **PPP-PCTHR**

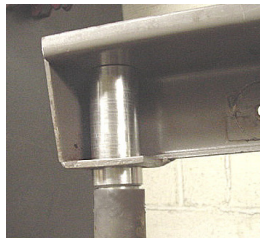


Measuring 3 inches from top, mark and remove tube-end to be replaced.

Insert Threaded Hole Repair. Place pit board clamp onto frame and lightly secure all 3 positions in preparation for welding.

Before welding, re-access dimensions for desired length and further alter frame tube with hand grinder, if needed.

A 1/8<sup>th</sup> to 3/16<sup>th</sup> gap between tube and repair is sufficient for welding but does not have to be perfect as tube-insert length allows room for error.



Rev.02-12-2020

### Pit Conveyor Frame Threaded Hole Repair

Part No. **PPP-PCTHR**



Measuring 3 inches from top, mark and remove tube-end to be replaced.

Insert Threaded Hole Repair. Place pit board clamp onto frame and lightly secure all 3 positions in preparation for welding.

Before welding, re-access dimensions for desired length and further alter frame tube with hand grinder, if needed.

A 1/8<sup>th</sup> to 3/16<sup>th</sup> gap between tube and repair is sufficient for welding but does not have to be perfect as tube-insert length allows room for error.

