



INSTALLATION INSTRUCTIONS

PART NUMBER	154-8853
PART DESCRIPTION	WIRING KIT FOR KPLUS 9Y
REV DATE	7/22/2011
MACHINE MODELS	KUSTODIAN PLUS



Basic knowledge of the operation of the lane machine

TOOLS NEEDED:

Phillips Screwdriver

Wire Cutters

Please thoroughly read through the instructions prior to performing the installation of this assembly. To avoid any potential problems, if at any time during the process you may have a question, stop and contact our Tech Support department at 1-800-280-2695

***NOTE: 9Y is for both Kustodian Plus machines with a DC or AC cleaner pump. The program will download for a DC cleaner pump motor. If you have an AC cleaner pump, HR410 will need to be turned on.

Also, if you have the one piece transfer brush system, make sure the brush chop function is working. If not, you will need to turn on HR408.***



- Place orders with Distributor
- Maintenance reminders on phone
- Software updates
- How to videos

Take full control of your
lane machine at
My.kegel.net

Kegel's Lane Maintenance Central:
Within USA - 1-800-280-2695
Outside USA - +1 863-734-0200
via e-mail at LMC@Kegel.net
website www.kegel.net



1. Move the existing GREY wire from CR9 #8 to CR10 #5.
2. Move the existing Yellow/Red wire from CR10 #8 to CR9 #5.
3. Install one end of the new (26") 153-1309 Grey 18AWG Wire w/ heatshrink & fork terminals from CR10 #1 & the opposite end to CR9 #8.
4. Install one end of the new (26") 153-1319 Yellow/Red 18AWG Wire w/ heatshrink & fork terminals from CR9 #1 & the opposite end to CR10 #8.
5. Wire tie new wires neatly to existing harness.

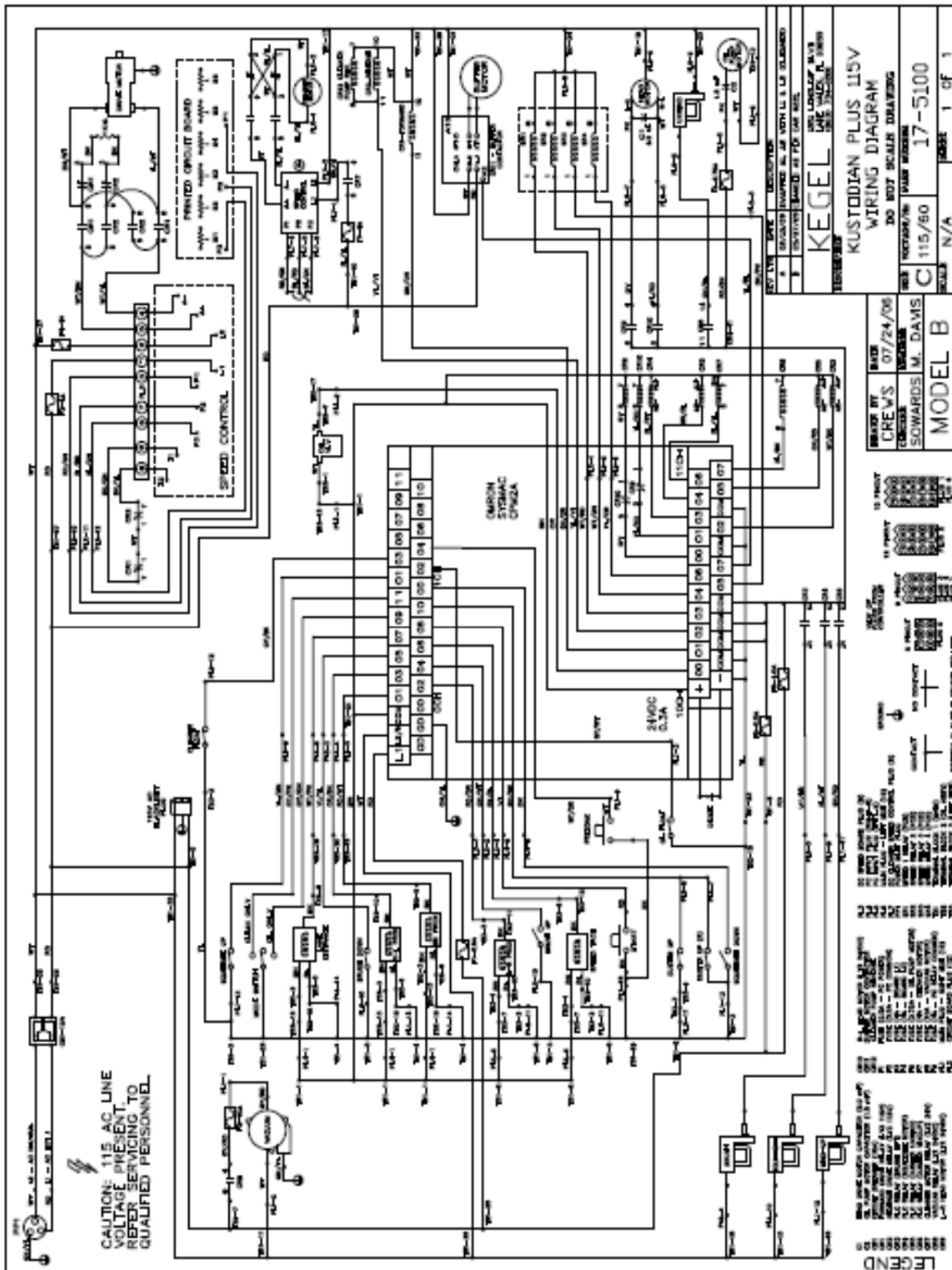


- Place orders with Distributor
- Maintenance reminders on phone
- Software updates
- How to videos

Take full control of your
lane machine at
My.kegel.net

Kegel's Lane Maintenance Central:
Within USA - 1-800-280-2695
Outside USA - +1 863-734-0200
via e-mail at LMC@Kegel.net
website www.kegel.net





Take full control of your lane machine at My.kegel.net

- Place orders with Distributor
- Maintenance reminders on phone
- Software updates
- How to videos

Kegel's Lane Maintenance Central:
Within USA - 1-800-280-2695
Outside USA - +1 863-734-0200
 via e-mail at LMC@Kegel.net
 website www.kegel.net



