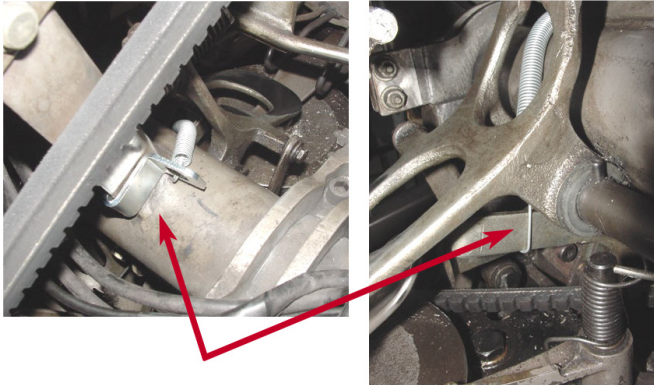




Rev.02-12-2020

Broken Interlock Shaft Repair

Part No. **PPP-BISR**



Blocking finger must move freely on shaft. Loosen with WD-40 or similar product and work pivot point until free, if needed.

Place long hook onto blocking finger and channel spring under trip lever.

Place spring into large bracket hole and pull onto forward cross conveyor mounting bracket.

If Blocking finger does not adequately return to its uppermost position, remove spring, and shorten long hook 1/2" for more force, if needed.

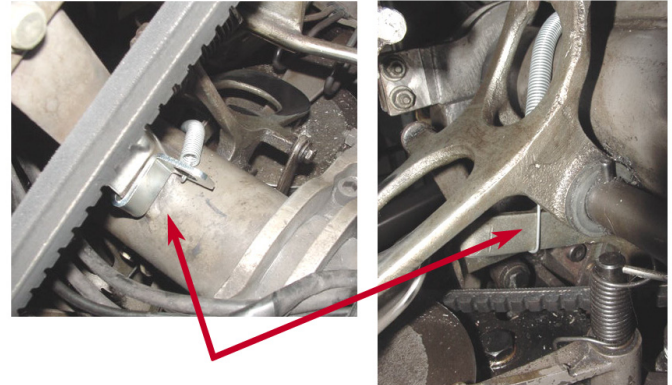
Repair broken shaft at your convenience or leave repair in place indefinitely.



Rev. 02-12-2020

Broken Interlock Shaft Repair

Part No. **PPP-BISR**



Blocking finger must move freely on shaft. Loosen with WD-40 or similar product and work pivot point until free, if needed.

Place long hook onto blocking finger and channel spring under trip lever.

Place spring into large bracket hole and pull onto forward cross conveyor mounting bracket.

If Blocking finger does not adequately return to its uppermost position, remove spring, and shorten long hook 1/2" for more force, if needed.

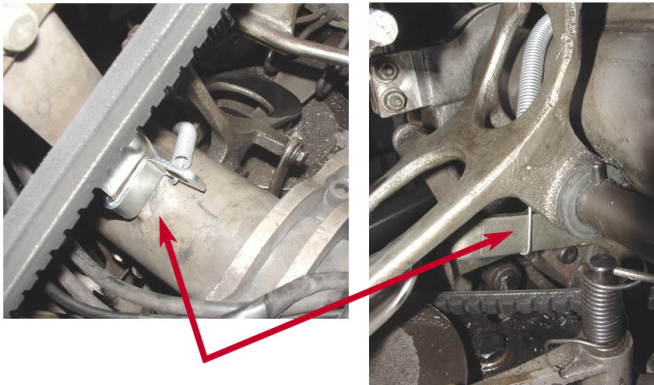
Repair broken shaft at your convenience or leave repair in place indefinitely.



Rev. 02-12-2020

Broken Interlock Shaft Repair

Part No. **PPP-BISR**



Blocking finger must move freely on shaft. Loosen with WD-40 or similar product and work pivot point until free, if needed.

Place long hook onto blocking finger and channel spring under trip lever.

Place spring into large bracket hole and pull onto forward cross conveyor mounting bracket.

If Blocking finger does not adequately return to its uppermost position, remove spring, and shorten long hook 1/2" for more force, if needed.

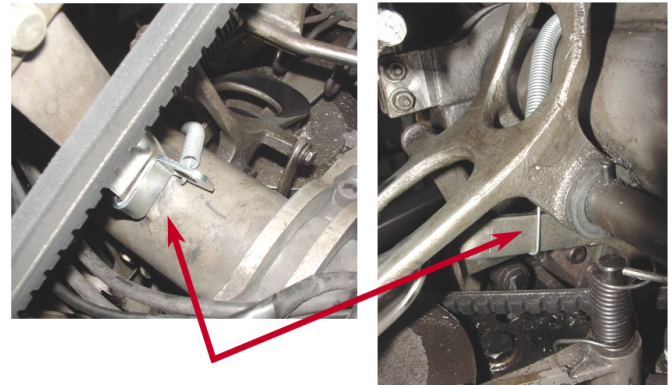
Repair broken shaft at your convenience or leave repair in place indefinitely.



Rev. 02-12-2020

Broken Interlock Shaft Repair

Part No. **PPP-BISR**



Blocking finger must move freely on shaft. Loosen with WD-40 or similar product and work pivot point until free, if needed.

Place long hook onto blocking finger and channel spring under trip lever.

Place spring into large bracket hole and pull onto forward cross conveyor mounting bracket.

If Blocking finger does not adequately return to its uppermost position, remove spring, and shorten long hook 1/2" for more force, if needed.

Repair broken shaft at your convenience or leave repair in place indefinitely.