

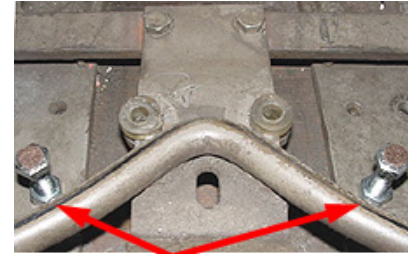


Rev.02-10-2020

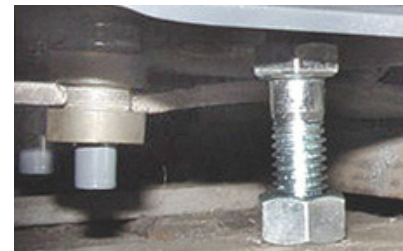
Y Switch Delta Plate *part # PPP-DP*

Installation instructions.

1. Remove transfer plate assembly.
2. Using drill bit size 19/64" place into unused threaded holes nearest to lower y-switch rail extensions located in top kick back plates. Using care to avoid damage to threaded holes drill down into wood 1/2" for *Stabilizer Bolt* clearance, as shown in image at right.
3. Insert *Stabilizer Bolts* and turn down far enough to allow Delta Plate to settle onto only both y-switch spacers then place Delta Plate into y-switch spacers.
4. Turn stabilizer bolts counterclockwise until bolt pads seat against the underside of Delta Plate extensions.
5. Remove Delta Plate and lock jam nuts against top kick back plates, carefully holding bolt positions so extensions will rest on top of stabilizer bolt pads as shown in image at right.
6. Place Delta Plate into y-switch spacers



Stabilizer Bolts



Rev.02-10-2020

Y Switch Delta Plate *part # PPP-DP*

Installation instructions.

1. Remove transfer plate assembly.
2. Using drill bit size 19/64" place into unused threaded holes nearest to lower y-switch rail extensions located in top kick back plates. Using care to avoid damage to threaded holes drill down into wood 1/2" for *Stabilizer Bolt* clearance, as shown in image at right.
3. Insert *Stabilizer Bolts* and turn down far enough to allow Delta Plate to settle onto only both y-switch spacers then place Delta Plate into y-switch spacers.
4. Turn stabilizer bolts counterclockwise until bolt pads seat against the underside of Delta Plate extensions.
5. Remove Delta Plate and lock jam nuts against top kick back plates, carefully holding bolt positions so extensions will rest on top of stabilizer bolt pads as shown in image at right.
6. Place Delta Plate into y-switch spacers



Stabilizer Bolts

